



Customer Release Notes

eRAD PACS
Version 8.0
Viewer Build 55

Release Date February 22, 2021

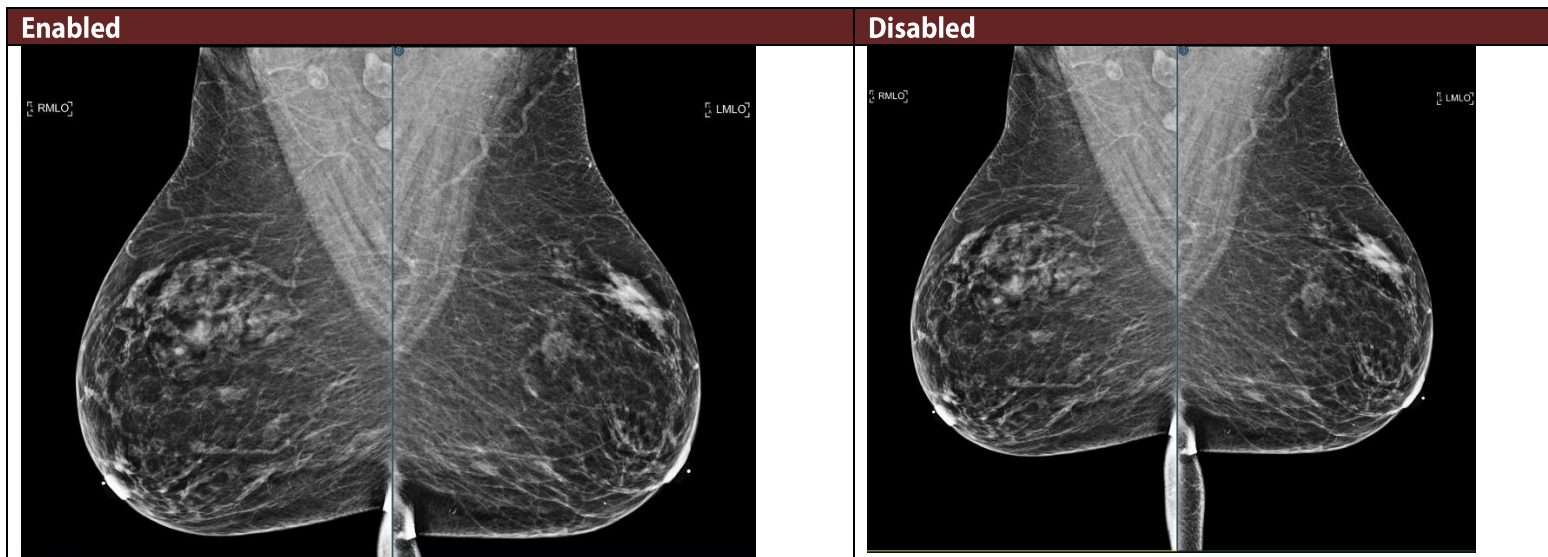
Table of Contents

New Features and Enhancements.....	3
1. Enhanced SmartFit.....	3
2. Updated Hologic ImageChecker and Genius CAD graphic	3
3. ImageChecker CAD Malc support	4
4. Mammography Progression Mode Updated.....	4
Resolved Issues.....	4
1. Viewer crash in Backdib updating.....	4
2. Image downloading type changing causes crashes.....	4
3. Mammo SmartFit incorrectly applied on images with paddle views	4
4. Large geometry CAD finding correction	4

New Features and Enhancements

1. Enhanced SmartFit

A new setting that enhances the viewer's SmartFit zoom capability by identifying anatomy that is not breast and excluding it from the normal SmartFit calculations. The data remains available by panning the image. The setting is disabled by default. The feature can be enabled from the Enhanced Smart Fit setting in the *Images/Zoom* section of the viewer settings panel.



2. Updated Hologic ImageChecker and Genius CAD graphic

The product logo displayed in the CAD header has been updated to use Hologic's current ImageChecker and Genius AI logos.



3. ImageChecker CAD Malc support

The viewer displays malc information presented in ImageChecker CAD objects, including summary counts in the CAD header and overlay fields, and malc graphics and geometric ROIs displayed on the images.

4. Mammography Progression Mode Updated

The viewer's progression step feature has been modified. The default defines three regions, showing the top-, middle- and bottom-third of the image. The zoom factor is adjusted to fit these thirds in the applicable frame. Progression settings are available (*Viewer settings panel, Images/Progression page*) to modify the number of regions, both rows and columns, as well as a setting to revert to the previous (auto-sized) progression step feature.

Resolved Issues

1. Viewer crash in Backdib updating

A series of issues related to a change intended to improve streaming performance caused messages (reporting the download completion status) to get processed in the wrong order. As a result, image displaying would hang or the viewer would crash. This has been resolved.

2. Image downloading type changing causes crashes

DEPENDENCY NOTICE: Desktop Apps 8.0.27.1 (in EPConnect.exe 8.0.14) is required.

If a local cached object was compressed, the viewer starts a task to decompress it. If the file was re-downloaded with a different compression format before the decompression task started, the task would attempt to access the original object file and crash. This has been resolved.

3. Mammo SmartFit incorrectly applied on images with paddle views

The skin line detection algorithm attempted to identify the image orientation based on the image data. When paddles are present, the orientation determination could fail. The algorithm now uses the DICOM data to determine the breast orientation.

4. Large geometry CAD finding correction

CAD objects defining polygons with more than 500 points were displayed but not in their entirety. This has been resolved.