

Server Update

**For eRAD RIS
Version 2.0
Build 44.4
Update 44.4.999SA**

Table of Contents

1. Code Stream	3
2. Package Contents	6
3. Intended Audience	6
4. eRAD RIS Release Version Numbers	7
5. Installing	8
Client/GUI.....	8

eRAD RIS Server Update

1. New Features

Special build requirements came in from our customers in South Africa. In future builds starting with Build 45 we will have the ability to create custom access string to hide fields, tabs, etc... Build 44.4.999 has been developed in the interim to remove tabs and fields requested.

The following has been removed from view in this build 44.4.999

1. Remove the Patient Origin group box from the Patient tab
2. Remove the Family History group box from the Patient tab
3. Remove Approved Medical Record Access from the Contacts/Demographics tab
4. Remove the MU tab
5. Remove the Image Request tab
6. Remove the Review tab
7. Remove the Contact Log tab
8. Make Special Accommodations a non-mandatory field
9. Make Reason for Exam a non-mandatory field
10. Change the text on the Manage Policies button to “Medical Aids”

The screenshot displays the 'Patient' tab in the eRAD RIS application. The window title is 'Schedule Order: TEST, Sa #24847PE'. The 'Patient' tab is selected, showing a series of sub-tabs: 'Patient', 'Patient Notes', 'Contacts / Demographics', 'Order', 'Schedule', and 'Billing Codes'. The 'General Information' section contains fields for Prefix, First (Sa), Last (Test), Middle, and Suffix. It also includes checkboxes for 'Deceased' and 'Claustrophobic', and an 'eRx' button. The MRN is 24847PE, Sex is Male, and DOB is 10-10-1980 (34y 7m). The 'Contact Information' section includes fields for Address 1 (4567 Duke Street), Address 2 (Suite 567), City (Beverly Hills), State (California), Zip (90210), Country (US), Email, and Preferred contact/delivery methods. Phone fields for Home, Work, and Cell are present, along with a 'No alternate phone' checkbox. The 'Alternate MRN' section is also visible.

Figure 1 – Patient Tab with Patient Origin and Family History Removed

eRAD RIS Server Update

Schedule Order: TEST, Sa #24847PE *

Patient Patient Notes **Contacts / Demographics** Order Schedule Billing Codes

Responsible Party

Relation: Mother
First name: Mary
Last name:
☒ Same as patient
Address 1: 4567 Duke Street
State: CA
Address 2: Suite 567
Zip: 90210
City: Beverly Hills
Phone: () -
Relation's ID:
ID Issuer:

Emergency Contact

Relation:
First name:
Last name:
☐ Same as patient
Address 1:
State:
Address 2:
Zip:
City:
Phone: () -

Figure 2 – Contacts/Demographics Tab with Approved Medial Record Access Removed

Schedule Order: TEST, Sa #24847PE *

Patient Patient Notes **Contacts / Demographics** **Order** Schedule Billing Codes

Reason for Exam

Referring:
Visited at:
Img notes:

Referring Details

Referring:
Visited at:
Img notes:

CC Physicians

Visit Location for CC*:
☐ Copy to patient

Preferred Location

Practice: (ADV) Advanced Radiology
Site:

Flags

☐ Direct referral
☐ STAT exam
☐ STAT read
☐ STAT precert
☐ Transportation req'd:
Special accommodations:

Insurance Policies

Note	Carrier Code	Carrier Name	Policy #	Group Name	Group Number	Phone	Priority	Eligibility

Billing Method

(Bill to insurance)
06-03-15 MacDougallS -

Medical Aids **IVT Notes** **Verify**

Order Notes

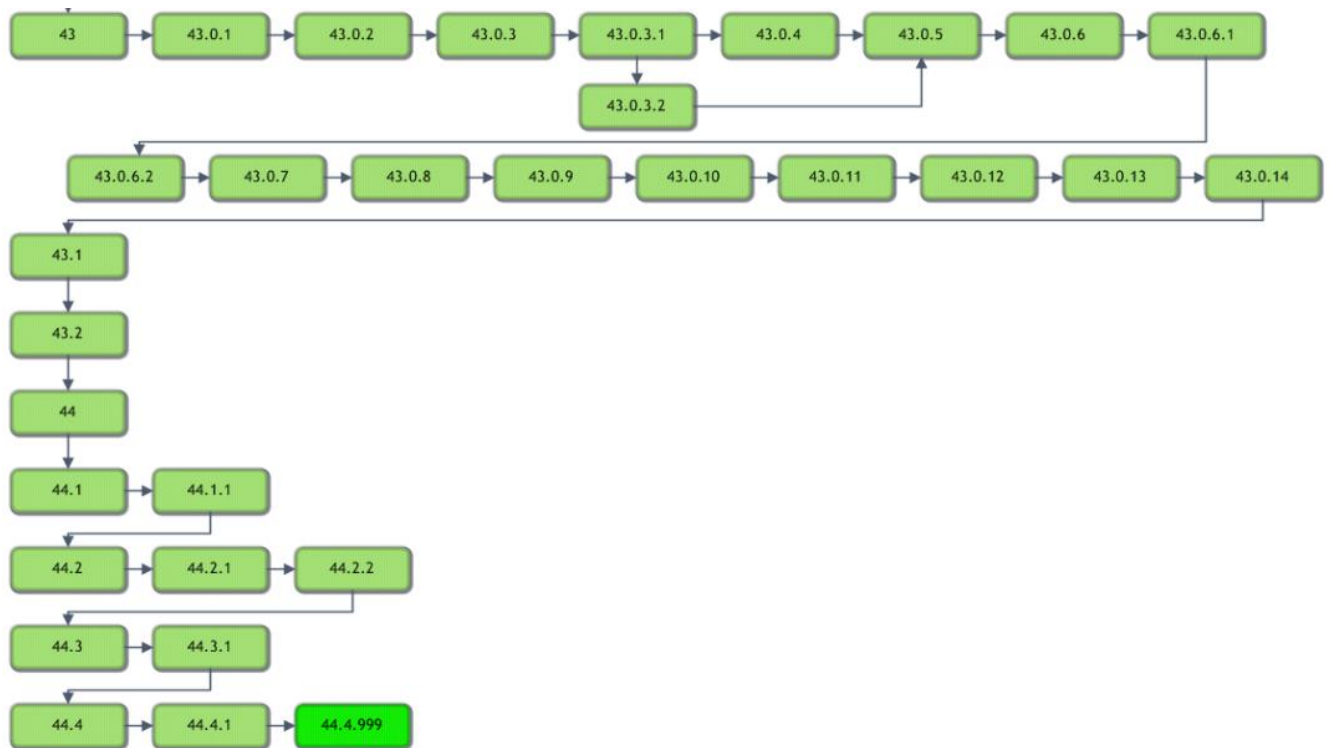
06-03-15 MacDougallS -

Scheduling Notes

06-03-15 MacDougallS -

Figure 3 – Order Tab with Medical Aids Button and neither Reason for Exam or Special Accommodations are Required Fields

2. Code Stream



Legend:

Light Green = Released software

Gray = Will not be released

Bright Green = Current Release

3. Package Contents

Files included for this server update:

1. **GUI_ZIP_Updates** contains 1 file:
rRIS_1.3.44.4.999.29083

4. Intended Audience

This document is created by the RIS Development team for the RadNet/eRAD RIS Implementation teams.

5. eRAD RIS Release Version Numbers

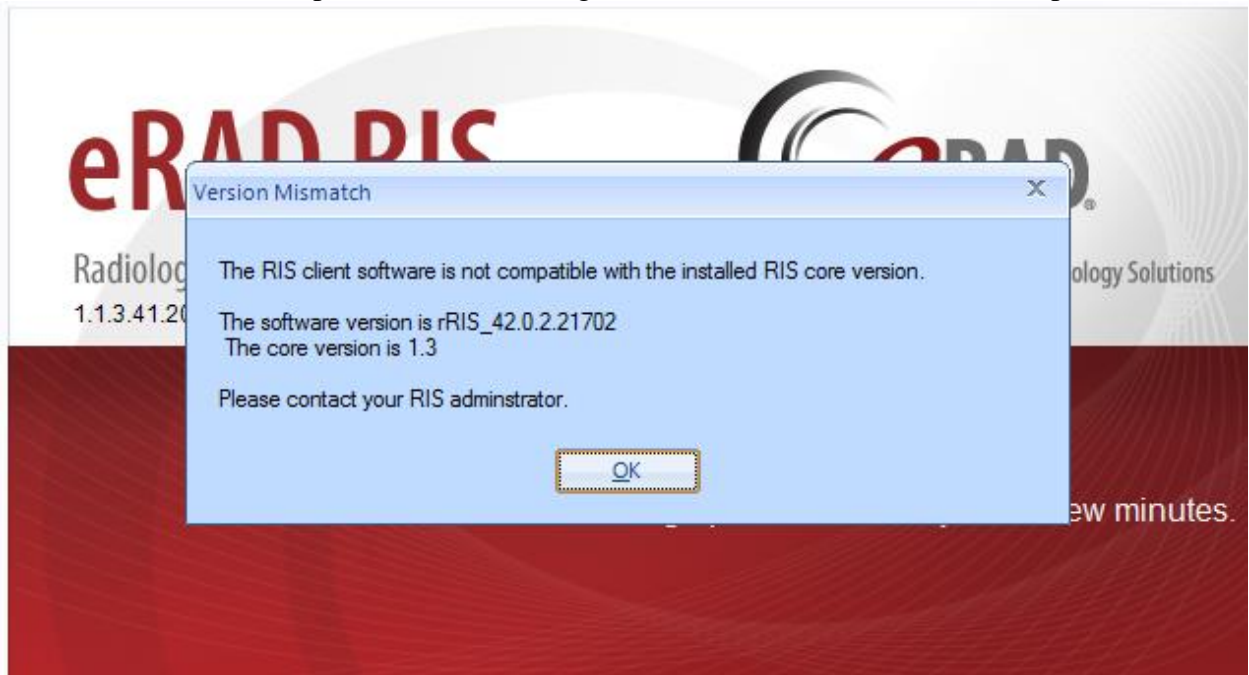
Build	Patch	UI Version	Core Version	WS Version	DB Version	Notes
43	-	2.43.0.0.23715(3GB)	2.43.0.0.23171	2.43.0.0.23715	2.43.0.0.23743	Full Version Release
43	1	2.43.0.1.23798(3GB)	2.43.0.0.23171	2.43.0.1.23798	2.43.0.1.23770	GUI.zip, Web Service, DB updates
43	2	2.43.0.2.24017(3GB)	2.43.0.0.23171	2.43.0.2.24017	2.43.0.2.24023	GUI.zip, Web Service, DB updates and Management Report Deployment
43	3	2.43.0.3.24298(3GB)	2.43.0.0.23171	2.43.0.3.24298	2.43.0.3.24283	GUI.zip, Web Service, DB updates and Management Report Deployment
43	3.1	2.43.0.3.24450(3GB)	2.43.0.0.23171	2.43.0.3.24298	2.43.0.3.24421	GUI.zip, and DB updates
43	3.2	2.43.0.3.24450(3GB)	2.43.0.0.23171	2.43.0.3.24298	2.43.0.3.24421a	DB updates
43	4	2.43.0.4.24447(3GB)	2.43.0.0.23171	2.43.0.4.24447	2.43.0.4.24442	GUI.zip, Web Service, DB updates and Management Report Deployment
43	5	2.43.0.4.24632(3GB)	2.43.0.0.23171	2.43.0.4.24632	2.43.0.4.24560	GUI.zip, Web Service and DB updates
43	6	2.43.0.4.24(3GB)	2.43.0.0.23171	2.43.0.4.24	2.43.0.4.24	GUI.zip, Web Service and DB updates
43	6.1	2.43.0.6.24937(3GB)	2.43.0.0.23171	2.43.0.6.24937	2.43.0.6.24914	GUI.zip, Web Service
43	6.2	2.43.0.6.24970(3GB)	2.43.0.0.23171	2.43.0.6.24970	2.43.0.6.24914	GUI.zip, Web Service
43	7	2.43.0.7.25258(3GB)	2.43.0.0.23171	2.43.0.7.25258	2.43.0.7.25226	GUI.zip, Web Service, DB updates and Management Report Deployment
43	8	2.43.0.8.25440(3GB)	2.43.0.0.23171	2.43.0.8.25440	2.43.0.8.25425	GUI.zip, Web Service, DB updates and Management Report Deployment
43	9	2.43.0.9.25477(3GB)	2.43.0.0.23171	2.43.0.9.25477	2.43.0.8.25425	GUI.zip and Web Service
43	10	2.43.0.9.25477(3GB)	2.43.0.0.23171	2.43.0.10.25477	2.43.0.8.25425	Web Service
43	11	2.43.0.11.25512(3GB)	2.43.0.0.23171	2.43.0.11.25512	2.43.0.8.25425	GUI.zip and Web Service
43	12	2.43.0.12.25554(3GB)	2.43.0.0.23171	2.43.0.12.25554	2.43.0.12.25536	GUI.zip Web Service and DB Updates
43	13	2.43.0.12.25610(3GB)	2.43.0.0.23171	2.43.0.12.25610	2.43.0.12.25536	GUI.zip and Web Service
43	14	2.43.0.14.25644(3GB)	2.43.0.0.23171	2.43.0.13.25610	2.43.0.12.25536	GUI.zip
43.1	-	2.43.1.0.25850(3GB)	2.43.0.0.23171	2.43.1.0.25850	2.43.1.0.25771	GUI.zip Web Service and DB Updates
43.2	-	2.43.2.0.26864(3GB)	2.43.0.0.23171	2.43.2.0.26864	2.43.1.0.25771	GUI.zip and Web Service
44	-	2.44.0.0.26570(3GB)	2.44.0.0.26405	2.44.0.0.26570	2.44.0.0.26475	Full Version Release
44.1	-	2.44.0.0.26984(3GB)	2.44.0.0.26405	2.44.0.0.26984	2.44.0.0.26906	Gui.zip, Web Service, and DB
44.1	1	2.44.1.1.27093(3GB)	2.44.0.0.26405	2.44.1.0.26984	2.44.1.0.26906	Gui.zip
44.2		2.44.2.0.27410(3GB)	2.44.0.0.26405	2.44.2.0.27410	2.44.2.0.27365	Gui.zip, Web Service, and DB
44.2	1	2.44.2.1.27959(3GB)	2.44.0.0.26405	2.44.2.1.27959	2.44.2.1.27909	Gui.zip, Web Service, and DB
44.2	2	2.44.2.1.27959(3GB)	2.44.0.0.26405	2.44.2.2.28094	2.44.2.1.27909	Web Service
44.3	-	2.44.3.0.28292	2.44.0.0.26405	2.44.3.0.28277	2.44.3.0.28138	Gui.zip, Web Service, and DB
44.3	1	2.44.3.1.28535(3GB)	2.44.0.0.26405	2.44.3.1.28535	2.44.3.0.28138	Gui.zip and Web Service
44.4	-	2.44.4.0.28762(3GB)	2.44.0.0.26405	2.44.4.0.28762	2.44.4.0.28676	Gui.zip, Web Server, DB, Management Report Deployment
44.4	1	2.44.4.1.28953(3GB)	2.44.0.0.26405	2.44.4.1.28953	2.44.4.0.28676	Gui.zip and Web Server
44.4	999	2.44.4.1.29083(3GB)	2.44.0.0.26405	2.44.4.1.28953	2.44.4.0.28676	Gui.zip

6. Installing

Client/GUI

- 1) Copy and replace the current rRIS...zip file with the rRIS_1.3.44.4.999.29083.zip file provided with this release.

Be sure to make a backup of the ris.exe.config file contained within the current .zip folder.



If you receive the Version Mismatch error above the GUI.zip will need to be renamed to add 1.3. to it. The GUI.zip file name change is from rRIS_44.4.999.29083→ rRIS_1.3.44.4.999.29083

NOTE: the GUI.zip included with this release has already been renamed to include 1.3.

This is required for installs that have not reached build 42. Because the software installed on your local workstation is a pre-42 build it detects a version mismatch in the software naming and won't allow the newest build to be launched (it is looking for 1.3. in the name). Once the workstation(s) have reached a build of 42 we will no longer need to add "1.3." to the GUI.zip name. Also note that a core install will not resolve this issue below.

NOTE: If your upgrade is coming from 40.016.1 or prior a core install will be required. Versions (builds) of 40.017 and greater do not require a core install as long as you are at least at 40.017 (Core Version 1.3.40.18756)