

Server Update

For eRAD RIS
Version 1.0
Build 40
Update 40.017

Table of Contents

1. New Features	3
Optimize field navigation	3
Locking section titles enhanced	5
New M*Modal Recognizer File	5
Reporting – Microphone wizard changes	6
2. Defects Resolved	9
3. Package Contents	10
4. Intended Audience	11
5. Who is affected	11
6. eRAD RIS Release Version Numbers	11
7. Installing	13

1. New Features

Optimize field navigation

We have a concept of FFF (Form Filling Fields) and regular commands. Until now FFF were using the default M*Modal optimized field navigation. This is believed to be the cause of the second form of jumping. M*Modal is working on a solution but it will take some time before completion.

We have implemented a new user preference setting titled “Aggressive field navigation” that will turn off FFF navigation when unselected. The result will be less aggressive field navigation but it should result in less jumping. To accomplish this we had to create our own voice commands for each field in a similar manner as our macros and other RadNet commands.

To summarize:

- Added new method to ReportTemplateEditor.cs called CreateVoiceCommandsForFields
- Added the call to load the field commands in ReportingRadiologist activate method and to unload the commands in the unloadshortcuts method
- Had to move GetCurrentReportFields methods back to build 40.017 so I could use them to get field data
- Place a check in the CreateVoiceCommandsForFields method to look at the newly created user preference. If on, it will behave as it did before otherwise use our own RadNet commands to navigate.
- Overloaded the NavigateToField method to include by cue or by title
- Handled the new voice commands in ReportingRadiologist to raise the proper navigate to field

The new user preference “Aggressive field navigation” can be found in the Interactive Dictation section on the Reporting tab of the User Preferences window.

RADNET, Inc. – eRAD RIS Server Update

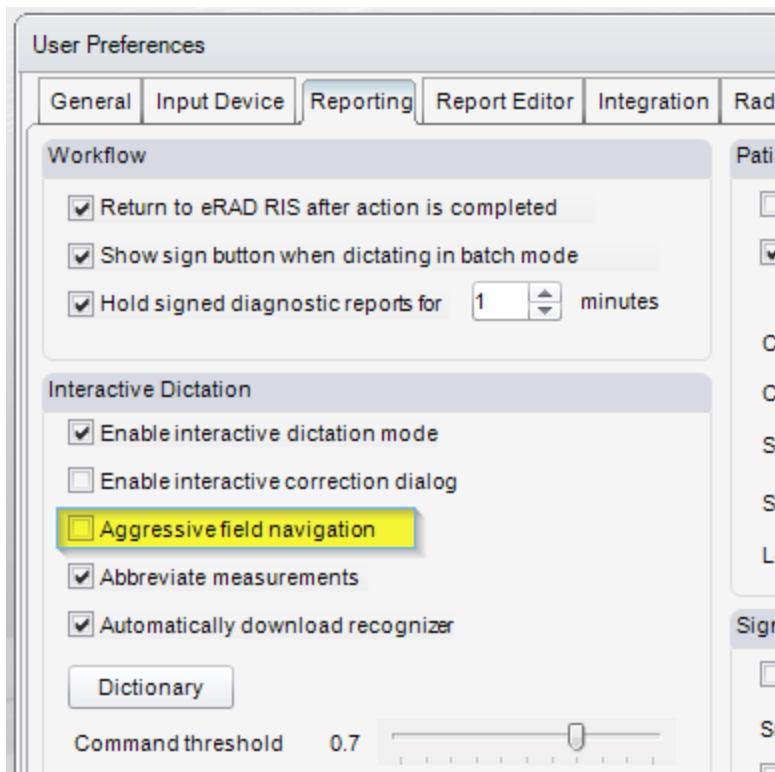


Figure 1.1 – New user preference “Aggressive field navigation”

Locking section titles enhanced

In a previous build the user preference Protect section headers was added to lock the section title and header area to be locked so it could not be deleted or altered. Also within the reporting window a new button was added to toggle this feature on and off when needed. While this feature did not protect the section title completely it did add to the section title from being removed.

In this patch release the section title will also be protected when using interactive dictation. Users were finding the section title could be selected and altered via dictation. For instance, a range of text is completely selected that resided directly above or below a section title, empty spaces may be also selected which may include the start or beginning of the section title. When the user dictated to overwrite the selected text, it would inadvertently remove the section title as well. This has been improved, but is not perfect yet. We have discovered that inserting a macro over the selected text, or if the section title is completely selected, it can overwrite the section title. We have logged an additional bug for this issue.

New M*Modal Recognizer File

A new recognizer file has been supplied with this patch release. The new version is v13_v5_351.12341.


 7~Recognizer.MtiRecognitionUS.Radiology_Interactive_v13_v5_351.12341.xc	XC File	85,642 KB
---	---------	-----------

Figure 1.2 – New M*Modal Recognizer file

This file can be replaced manually or via the use of the User Preference on the Reporting tab titled “Automatically download recognizer” and at next login, the newest will be downloaded from M*Modal. If this **option** is selected, the user **must be aware** that the Recognizer could change at each login.

Reporting – Microphone wizard changes

Accessing the microphone wizard has seen some changes in this patch release. First, you will no longer find the wizard in the user preferences section. It will only be accessible from the Reporting windows such as Dictate, or Sign Reports on the editor toolbar. Secondly, there are now 2 icons for the SpeechMike wizard.

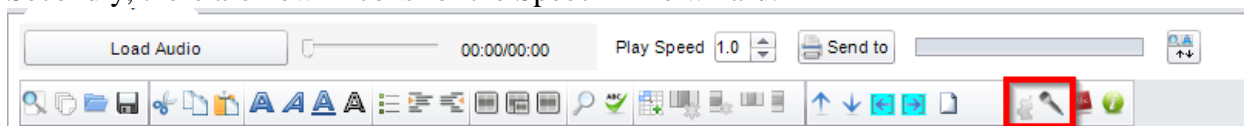


Figure 1.3 – New icons for speechmike

The first one is to select Microphone Setting. This window will show you recording devices attached and capturing sound. For instance in testing I was getting poor recognition and this window helped me determine that the internal mic on my laptop was also capturing speech.

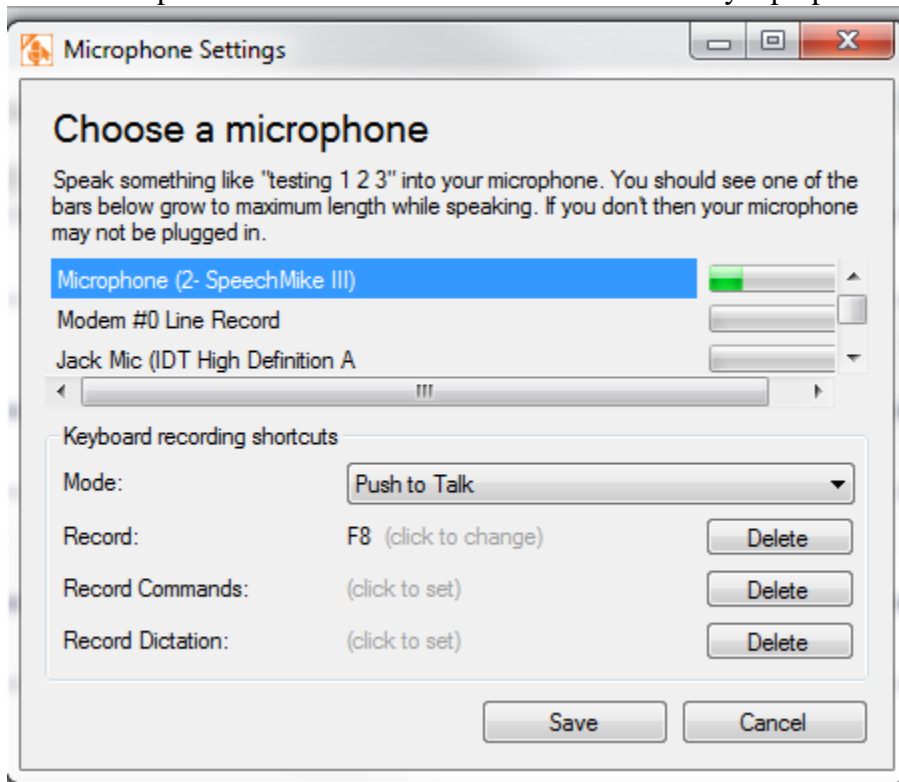


Figure 1.4 – Microphone setting window

RADNET, Inc. – eRAD RIS Server Update

The second icon will open the Microphone Calibration window. This simple window will allow the user adjust the microphone by reading the text supplied within the window.

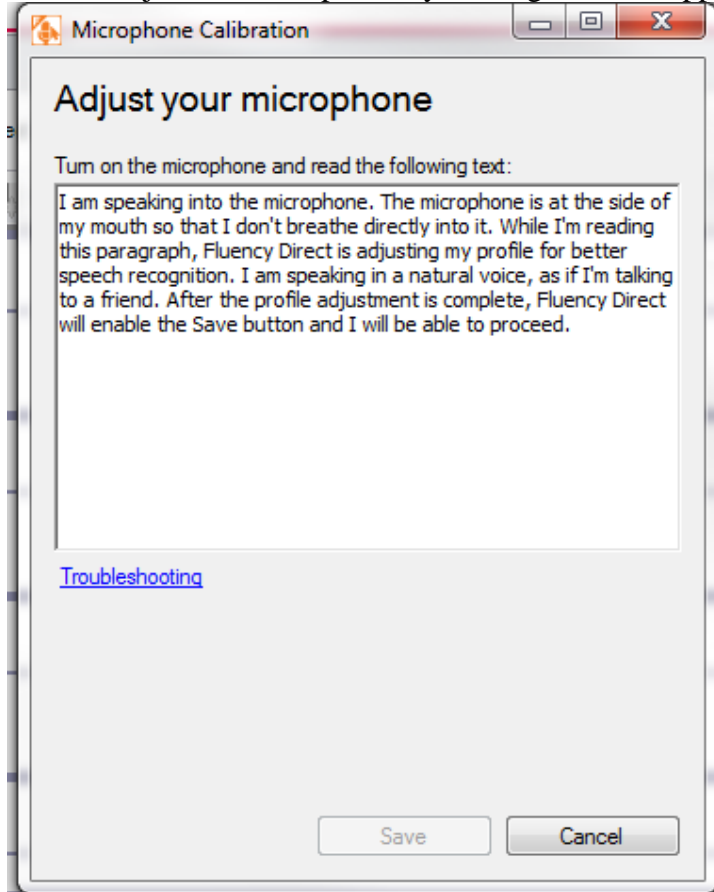


Figure 1.5 – Microphone calibration window

RADNET, Inc. – eRAD RIS Server Update

Selecting the Troubleshooting link will give the user 2 options. After reading the text, you can play back what the system has picked up in the last 5 seconds. The second play button will play a prerecorded to verify the sound is being played back.

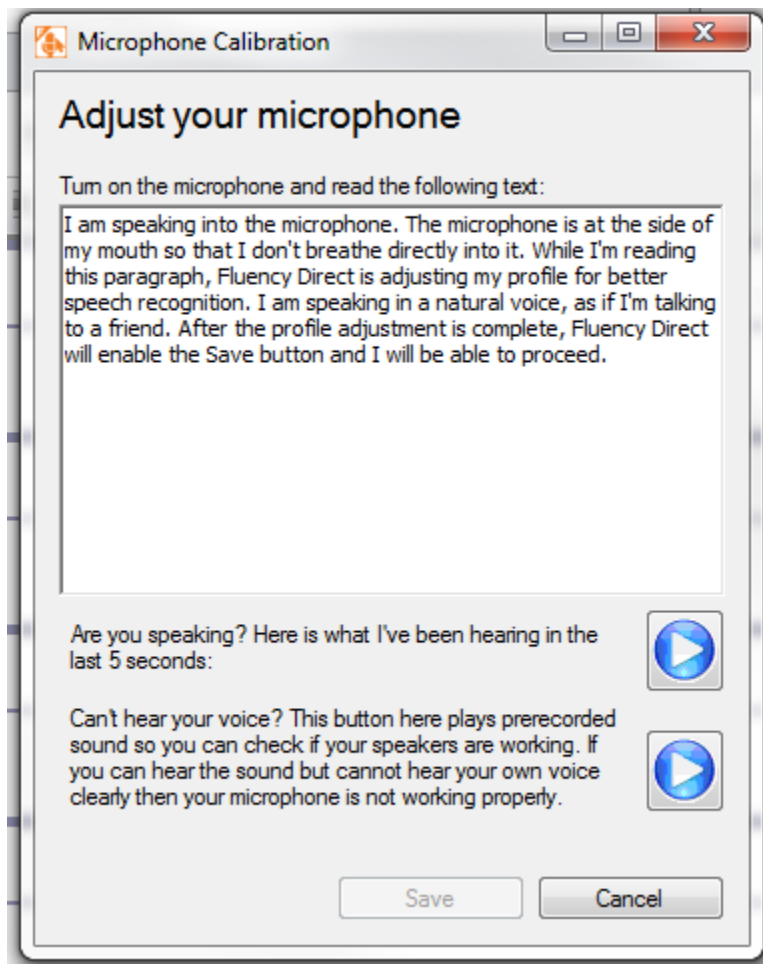


Figure 1.6 – Troubleshooting options

NOTE: for Build 40.017, the prerecorded message was not supplied. A message can be recorded and inserted into the appropriate directory with the file name gainWizardTroubleShooting.wav.

Selecting the Play ICON for “Can’t hear your voice”... will inform the user that the file was not found and display the directory in which the .wav file should reside.

2. Defects Resolved

Redmine #	Subject	Priority
4485	CD Import - Fails with error unable to insert duplicate	Urgent
4476	CD Import - Crashes when the Date of Service on the CD is less than equal to the year 1753-01-01	Urgent
4493	Error when testing 40.17 - Transcription Reort Drafted WL (Create Edit report)	High
4478	Patient folder navigation	High
4427	Reporting - implement new M*Modal libraries and functionality 7.82 suite (Feature)	Normal
4293	Inappropriate activation of verbal cued field	Normal
4226	Reporting - Need microphone icon	Normal
3734	Reporting - protect section headers not working with interactive	Normal

3. Package Contents

Files included for this server update:

- 1) GUI ZIP Updates folder contains
 - a) rRIS_1.3.40.18780 (3GB).zip
- 2) Installer Updates folder contains 1 subfolder called _setup. This subfolder contains
 - a) rRISSetup.msi
 - b) setup.exe
- 3) RIS Service Updates folder contains the following files and 1 subfolder titled XSL
 1. CDSJobManager.dll
 2. CDSJobManager.pdb
 3. CdsLib.dll
 4. CdsLib.XmlSerializers.dll
 5. CdsLib.xml
 6. CommonLib.dll
 7. CommonLib.pdb
 8. DDEngine.dll
 9. DDEngine.pdb
 10. rRISServices.exe
 11. rRISServices.pdb
 12. rRISServicesx64.exe
 13. ScheduledTaskManager.dll
 14. ScheduledTaskManager.pdb
 15. SignatureApprovalService.exe
 16. SignatureApprovalService.pdb
 17. WCFSservice.dll
 18. WCFSservice.pdb
 19. WebApi.dll
 20. WebApi.pdb
 21. Wedge.exe
 22. Wedge.pdb
 23. Tourreau.Gilles.FaxDotNet.xml
 24. XSL subfolder contains a stylesheets subfolder which contains
 - a. CDAToHTMLCompleteReport.xslt
 - b. CDAToHTMLImpressionSection.xslt
 - c. CDAToRIS.xslt
 - d. CDAToTxt.xslt
 - e. DocumentModelReport.xslt
 - f. DocumentModelReportAsXml.xslt

RADNET, Inc. – eRAD RIS Server Update

4. Intended Audience

This document is created by the RIS Development team for the RadNet RIS Implementation team.

5. Who is affected

Build 40 installs. This server update must be applied directly to the build 40 core install. Server updates are not cumulative. Any previous server updates must be applied before this one.

6. eRAD RIS Release Version Numbers

Build	Patch	UI Version	Core Version	WS Version	DB Version	Notes
37	-	1.2.37.12843	1.2.37.12782	1.2.37.12843	1.2.37.12843	Full version release
37	1	1.2.37.13040	1.2.37.13040	1.2.37.13039	1.2.37.13003	Core install, GUI.zip, web service and database updates
37	2	1.2.37.13069	1.2.37.13040	1.2.37.13069	1.2.37.13003	GUI.zip and Web service updates
37	3	1.2.37.13069	1.2.37.13040	1.2.37.13069	1.2.37.13003	WebAPI updated, no version changes
37	4	1.2.37.13171	1.2.37.13040	1.2.37.13165	1.2.37.13171	GUI.zip, web service, and database updates
37	5	1.2.37.13347	1.2.37.13040	1.2.37.12979	1.2.37.12979	Bug was discovered with version numbers, this is why it appears we went backwards in the version number but we did not.
37	6	1.2.37.13665	1.2.37.13040	1.2.37.13580	1.2.37.12979	GUI.zip and Web service updates
37	7	1.2.37.13807	1.2.37.13040	1.2.37.13799	1.2.37.13807	GUI.zip and Web service updates. Also MIRTH mapping changes
37	8	1.2.37.13807	1.2.37.13040	1.2.37.13827	1.2.37.13807	Web service update
37	9	1.2.37.13807	1.2.37.13040	1.2.37.13839	1.2.37.13807	Web service update
37	10	1.2.37.13895	1.2.37.13040	1.2.37.13895	1.2.37.13895	GUI.zip, Web service and database updates
37	11	1.2.37.14161	1.2.37.13040	1.2.37.14161	1.2.37.14161	GUI.zip, Web service, database updates and SQL Management reporting
37	12	1.2.37.14267	1.2.37.13040	1.2.37.14161	1.2.37.14267	GUI.zip, Web service and database updates
37	13	1.2.37.14326	1.2.37.13040	1.2.37.14326	1.2.37.14326	GUI.zip, Web service and database updates
38	-	1.2.38.14486	1.2.38.14486	1.2.38.14486	1.2.38.14486	Full version release
38	1	1.2.38.14748	1.2.38.14748	1.2.38.14748	1.2.38.14748	Core install required
38	2	1.2.38.15182	1.2.38.14748	1.2.38.14748	1.2.38.14748	GUI.zip update only
38	3	1.2.38.15251	1.2.38.14748	1.2.38.14748	1.2.38.14748	GUI.zip update only

RADNET, Inc. – eRAD RIS Server Update

38	4	1.2.38.15327	1.2.38.14748	1.2.38.15290	1.2.38.14748	GUI.zip and Web service updates
38	5	1.2.38.15513	1.2.38.14748	1.2.38.15513	1.2.38.15451	GUI.zip, Web service and database updates
38	6	1.2.38.15618	1.2.38.14748	1.2.38.15513	1.2.38.15618	GUI.zip and database updates
38	7	1.2.38.15768	1.2.38.14748	1.2.38.15768	1.2.38.15618	GUI.zip and Web Service updates
39	-	1.3.39.15389	1.3.39.15389	1.3.39.15377	1.3.39.15355	Full version release
39	1	1.3.39.16026	1.3.39.15943	1.3.39.15943	1.3.39.15957	Requires Core Install. GUI.zip, Web Service, and Database updates
40	-	1.3.40.16628	1.3.40.16628	1.3.40.16628	1.3.40.16628	Full version release
40	1	1.3.40.16849	1.3.40.16659	1.3.40.16744	1.3.40.16727	GUI.zip, Web service, database updates and SQL Management reporting
40	2	1.3.40.16868	1.3.40.16659	1.3.40.16868	1.3.40.16727	GUI.zip and Web Service
40	3	1.3.40.16868	1.3.40.16659	1.3.40.16868	1.3.40.16727	DB updated only
40	4	1.3.40.16967	1.3.40.16659	1.3.40.16932	1.3.40.16961	GUI.zip, Web service, database updates
40	5	1.3.40.17087	1.3.40.16659	1.3.40.17069	1.3.40.17087	GUI.zip, Web service, database updates
40	6	1.3.40.17146	1.3.40.16659	1.3.40.17146	1.3.40.17146	GUI.zip, Web service, database updates
40	7	1.3.40.17268	1.3.40.16659	1.3.40.17268	1.3.40.17259	GUI.zip, Web service, database updates
40	8	1.3.40.17364	1.3.40.16659	1.3.40.17362	1.3.40.17343	GUI.zip, Web service, database updates
40	9	1.3.40.17370	1.3.40.16659	1.3.40.17370	1.3.40.17370	GUI.zip, Web service, database updates
40	10	1.3.40.17435	1.3.40.16659	1.3.40.17435	1.3.40.17370	64 BIT web service. GUI.zip, Webservice.
40	11	1.3.40.17435	1.3.40.16659	1.3.40.17525	1.3.40.17370	Web service update
40	12	1.3.40.17685	1.3.40.16659	1.3.40.17685	1.3.40.17648	GUI.zip, Web service, database updates
40	13	1.3.40.17776	1.3.40.16659	1.3.40.17776	1.3.40.17648	GUI.zip, Web service
40	14	1.3.40.18063(3GB)	1.3.40.16659	1.3.40.18063	1.3.40.18063	GUI.zip, Web service, database updates
40	14.1	1.3.40.18063(3GB)	1.3.40.16659	1.3.40.18107	1.3.40.18063	Web service
40	15	1.3.40.18127(3GB)	1.3.40.16659	1.3.40.18127	1.3.40.18127	GUI.zip, Web service, database updates
40	16	1.1.3.40.18585 (3GB)	1.3.40.16659	1.3.40.18585	1.3.40.18646	GUI.zip, Web service, database updates
40	16.1	1.3.40.18705 (3GB)	1.3.40.16659	1.3.40.18585	1.3.40.18646	GUI.zip
40	17	1.3.40.18780 (3GB)	1.3.40.18756	1.3.40.18756	1.3.40.18646	Core install required for Radiologist User Group. GUI.zip, Core setup, and Web Service updates

7. Installing

- 1) Copy and replace the current rRIS...zip file with the rRIS_1.3.40.18780.zip file provided with this release.
Be sure to make a backup of the ris.exe.config file contained within the current .zip folder.
- 2) Copy the _setup folder and its contents and replace the _setup folder and its contents. The _setup folder is located in the RISDeployment \Core folder.

NOTE: Core install is required for radiologist users to register the new M*Modal .dll files provided with this build. Other users are not required to run the core install, but may do so if they wish to.

- 3) Stop each service listed below. Copy the files from the RIS Service Updates folder to the directory for each rRISService. Be sure to make backup of all files, but especially the rRISServices.exe.config and rRISServices.vshost.exe.config files.

rRISService directories include:

- a) *rRISService*
- b) *CDS rRISService*
- c) *Wedge rRISService*
- d) *DDE rRISService*

Restart each service.