

# Server Update

For eRAD RIS  
Version 2.0  
Build 2.2016.3  
Update 2.2016.3.2

## **Table of Contents**

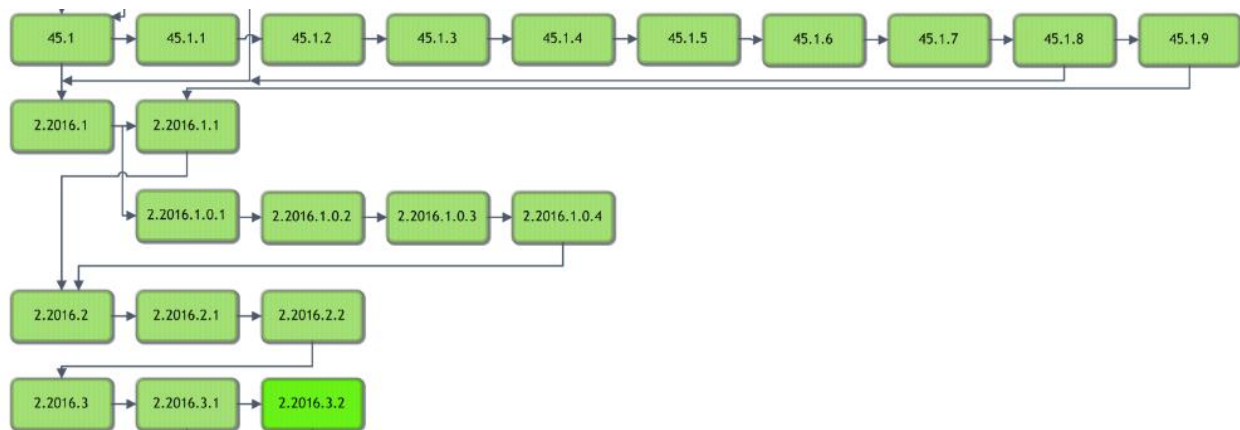
Resolved Items.....	3
Code Stream.....	4
Package Contents .....	5
Intended Audience .....	5
Who is affected .....	5
eRAD RIS Release Version Numbers .....	6
Installing .....	7
Client/GUI.....	7
Web Service .....	7

**Resolved Items**

Redmine #	Subject
14877	PACS Caching is not caching priors in reverse chronological order

## eRAD RIS Server Update

### Code Stream









### Legend:

Light Green = Previously Released software

Bright Green = Current Release

## **eRAD RIS Server Update**

### **Package Contents**

Name	Date Modified
 _Documentation	09/23/2016 1:21 PM
 _ReleaseNotes	09/28/2016 11:45 ...
 PACS Citrix Bridge	09/23/2016 1:21 PM
 rRISService	09/23/2016 1:19 PM
 ThickClient	09/23/2016 1:18 PM
 RISServerMasterCert.pfx	03/31/2016 1:38 PM

### **Intended Audience**

This document is created by the RIS Development team for the RadNet/eRAD RIS Implementation teams.

### **Who is affected**

Build 2016.3 installs. This server update must be applied to 2016.3

## eRAD RIS Server Update

### eRAD RIS Release Version Numbers

Build	Patch	UI Version	Core Version	WS Version	DB Version	Digital Forms	Notes
43.1	-	2.43.1.0.25850(3GB)	2.43.0.0.23171	2.43.1.0.25850	2.43.1.0.25771		GUI.zip Web Service and DB Updates
43.2	-	2.43.2.0.26864(3GB)	2.43.0.0.23171	2.43.2.0.26864	2.43.1.0.25771		GUI.zip and Web Service
44	-	2.44.0.0.26570(3GB)	2.44.0.0.26405	2.44.0.0.26570	2.44.0.0.26475		Full Version Release
44.1	-	2.44.0.0.26984(3GB)	2.44.0.0.26405	2.44.0.0.26984	2.44.0.0.26906		Gui.zip, Web Service, and DB
44.1	1	2.44.1.1.27093(3GB)	2.44.0.0.26405	2.44.1.0.26984	2.44.1.0.26906		Gui.zip
44.2	-	2.44.2.0.27410(3GB)	2.44.0.0.26405	2.44.2.0.27410	2.44.2.0.27365		Gui.zip, Web Service, and DB
44.2	1	2.44.2.1.27959(3GB)	2.44.0.0.26405	2.44.2.1.27959	2.44.2.1.27909		Gui.zip, Web Service, and DB
44.2	2	2.44.2.1.27959(3GB)	2.44.0.0.26405	2.44.2.2.28094	2.44.2.1.27909		Web Service
44.3	-	2.44.3.0.28292	2.44.0.0.26405	2.44.3.0.28277	2.44.3.0.28138		Gui.zip, Web Service, and DB
44.3	1	2.44.3.1.28535(3GB)	2.44.0.0.26405	2.44.3.1.28535	2.44.3.0.28138		Gui.zip and Web Service
44.4	-	2.44.4.0.28762(3GB)	2.44.0.0.26405	2.44.4.0.28762	2.44.4.0.28676		Gui.zip, Web Server, DB, SSRS Deployment
44.4	1	2.44.4.1.28953(3GB)	2.44.0.0.26405	2.44.4.1.28953	2.44.4.0.28676		Gui.zip and Web Service
44.4	2	2.44.4.2.29327(3GB)	2.44.0.0.26405	2.44.4.2.29327	2.44.4.0.28676		Gui.zip and Web Service
44.4	3	2.44.4.2.29722(3GB)	2.44.0.0.26405	2.44.4.2.29327	2.44.4.0.28676		Gui.zip and Web Service
44.5	-	2.44.5.0.30022(3GB)	2.44.0.0.26405	2.44.5.0.30022	2.44.5.0.29976		Gui.zip, Web Server, DB
44.5	1	2.44.5.1.30451(3GB)	2.44.0.0.26405	2.44.5.1.30451	2.44.5.1.30449		Gui.zip, Web Server, DB
44.5	2	2.44.5.2.30705(3GB)	2.44.0.0.26405	2.44.5.1.30705	2.44.5.1.30554		Gui.zip, Web Server, DB
45	-	2.45.0.0.29559(3GB)	2.45.0.0.26107	2.45.0.0.29559	2.45.0.0.29558		Full Version Release
45.1	-	2.45.1.0.30774(3GB)	2.45.0.0.26107	2.45.1.0.30774	2.45.1.0.30738		Gui.zip, Web Service, DB, SQLReporting, Questionnaire, Citrix support
45.1	1	2.45.1.1.31175(3GB)	2.45.0.0.26107	2.45.1.1.31175	2.45.1.1.31174		Gui.zip, Web Service, DB, SQLReporting, Questionnaire
45.1	2	2.45.1.1.31175(3GB)	2.45.0.0.26107	2.45.1.2.31378	2.45.1.1.31174		Web Service and Citrix Bridge
45.1	3	2.45.1.3.31452(3GB)	2.45.0.0.26107	2.45.1.3.31452	2.45.1.3.31369		GUI.zip, Web Service, DB, Questionnaire and Citrix Bridge
45.1	4	2.45.1.4.31621(3GB)	2.45.0.0.26107	2.45.1.4.31621	2.45.1.4.31599		GUI.zip, Web Service, DB, Questionnaire and Citrix Bridge
45.1	5	2.45.1.5.31773(3GB)	2.45.0.0.26107	2.45.1.5.31773	2.45.1.5.31771		GUI.zip, Web Service, DB, Questionnaire
45.1	6	2.45.1.6.32070(3GB)	2.45.0.0.26107	2.45.1.6.32070	2.45.1.6.31936		GUI.zip, Web Service, DB, Questionnaire, Citrix Bridge
45.1	7	2.45.1.6.32070(3GB)	2.45.0.0.26107	2.45.1.6.32070	2.45.1.6.31936		Web Service for Wedge only. Version number of Wedge is 45.1.6.32614
45.1	8	2.45.1.8.33254(3GB)	2.45.0.0.26107	2.45.1.6.32070	2.45.1.6.31936		GUI.zip
45.1	9	2.45.1.9.33573(3GB)	2.45.0.0.26107	2.45.1.6.32070	2.45.1.6.31936		GUI.zip
2016.1	-	2.16.1.0.33419 (3GB)	2.16.1.0.33079	2.16.1.0.33419	2.16.1.0.33416		GUI.zip, Web Service, DB, Management Reports, Questionnaire and Citrix Bridge
2016.1	1	2.16.1.1.33672 (3GB)	2.16.1.0.33079	2.16.1.0.33419	2.16.1.0.33416		GUI.zip
2016.1	.0.1	2.16.1.0.1 (3GB)	2.16.1.0.33079	2.16.1.0.33419	2.16.1.0.33416		GUI.zip (This is not included in 2016.1.1, version directly above)
2016.1	.0.2	2.16.1.0.1 (3GB)	2.16.1.0.33079	2.16.1.0.2	2.16.1.0.33416		Wedge Web Services only
2016.1	.0.3	2.16.1.0.3 (3GB)	2.16.1.0.33079	2.16.1.0.3	2.16.1.0.3.00128918		GUI.zip, Web Services and DB
2016.1	.0.4	2.16.1.0.4 (3GB)	2.16.1.0.33079	2.16.1.0.4	2.16.1.0.3.00128918		GUI.zip, Web Services
2016.2	-	2.16.2.0 (3GB)	2.16.2.0	2.16.2.0	2.16.2.0.00172540		Full Version Release - GUI.zip, Web Service, DB, Management Reports, Questionnaire and Citrix Bridge
2016.2	1	2.16.2.1 (3GB)	2.16.2.0	2.16.2.0	2.16.2.0.00172540		GUI.zip and Citrix Bridge
2016.2	2	2.16.2.2 (3GB)	2.16.2.0	2.16.2.0	2.16.2.2.00243102		GUI.zip, DB and Citrix Bridge
2016.3	-	2.16.3.0 (3GB)	2.16.3.0	2.16.3.0	2.16.3.0.00257101	2.16.3.0	Full Version Release
2016.3	1	2.16.3.1 (3GB)	2.16.3.0	2.16.3.1	2.16.3.1.00298834	2.16.3.0	GUI.zip, Web Service and DB
2016.3	2	2.16.3.2 (3GB)	2.16.3.0	2.16.3.2	2.16.3.1.00298834	2.16.3.0	GUI.zip, Web Service

## eRAD RIS Server Update

### Installing

#### Client/GUI

- 1) Copy and replace the current rRIS...zip file with the eRAD\_rRIS\_2016.3.2.zip file provided with this release.  
Be sure to make a backup of the ris.exe.config file contained within the current .zip folder.

#### Web Service

This update is only required for the Wedge Web Services. The Core RIS Service and Document Distribution Service are not required to be updated.

1. The web service upgrade consists of replacing the files in the RIS Web Service directory with the files supplied in the rRISService folder with this build. Always create a backup of the files being replaced. This upgrade includes 99 files in the rRISService folder and 6 sub folders. Of those folders, 1 is a folder titled “XSL” that contains a sub folder and files within the subfolder. Another folder is titled “**deploy**” that contains the new .config files that will be deployed with the user of the file called “ServicesConfigWizard.exe” (see instructions below). Folders are (Arabic), he (Hebrew), pt\_BR (Brazilian Portuguese) and es-AR (Argentina Spanish) are localization folders. The WedgePlugins folder contains various plugin files for RADAR, MIRTH, Ensemble, etc...

#### Services Configuration Wizard

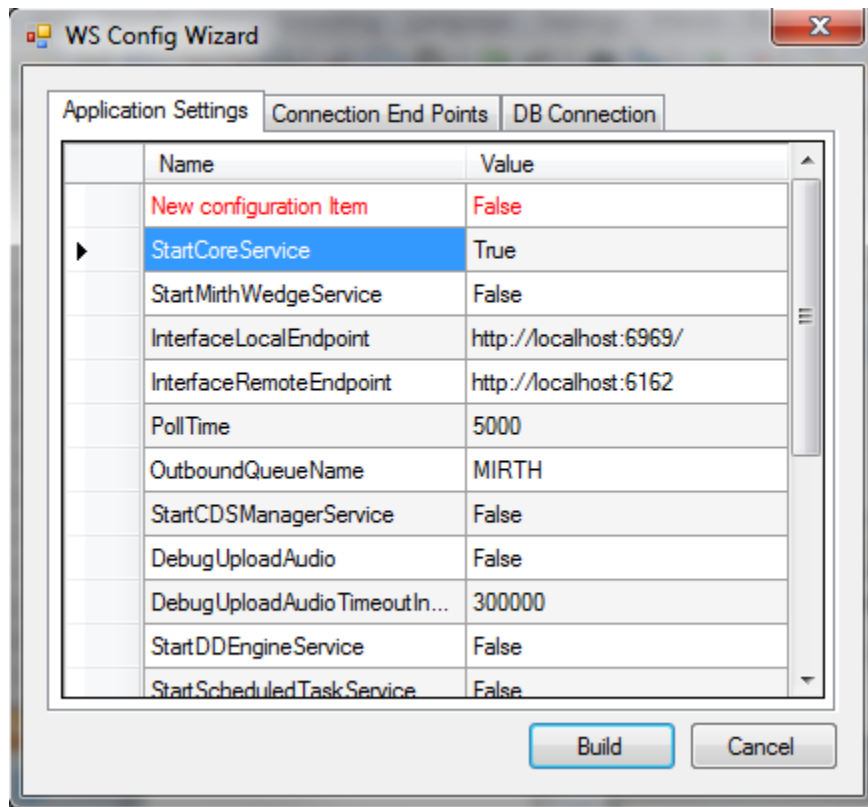
With the release of 4.2 to decrease the chance of losing configuration settings and missing new configuration options, we will no longer include the configuration files in the release in the main set of files, but they will now exist in a “deploy” folder, which will contain the three site configurable config files; applicationsettings, connectionstrings, and services as well as a copy of the rRISServices.exe configuration file. The contents of this folder should not be required to be touched.

On the install of a new service, all files will be copied to the appropriate locations on the server (no configurations will be overwritten). If instructed or to confirm no new configurations have been added the user can run the new application “ServicesConfigWizard.exe”

This application will read the existing configuration file(s) (if files exist), and compare to the provided new configuration files then will display three tabs, for each configuration file:

**Application Settings:** all existing configuration values will be displayed, if there are any new configuration entries they will be displayed in red.

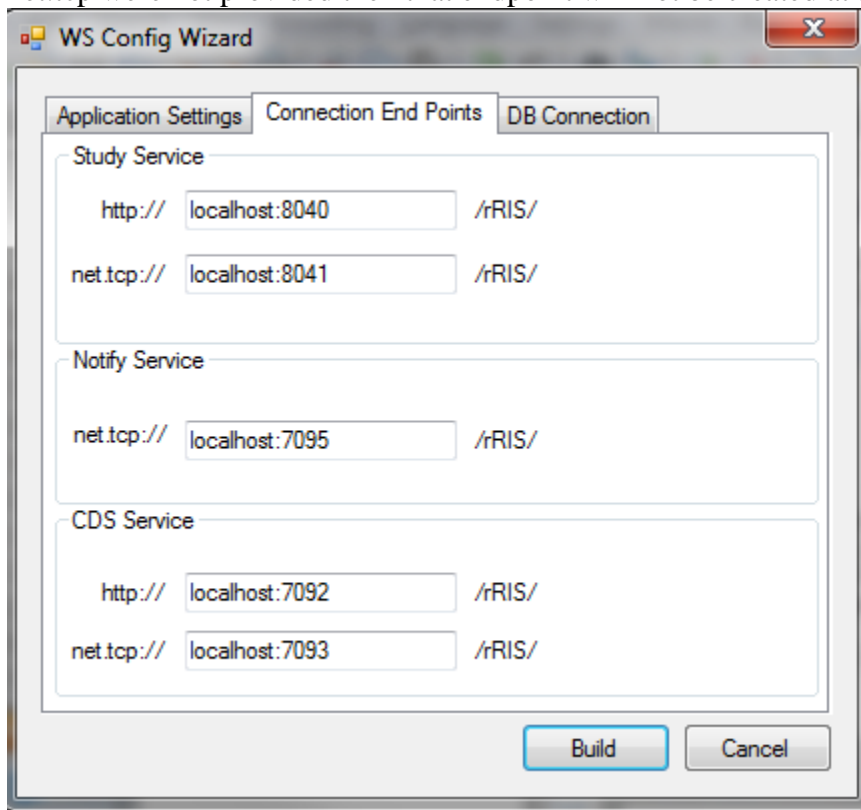
## eRAD RIS Server Update





## **eRAD RIS Server Update**

**Connection End Points:** will display the existing configuration, if the value is left blank then that entry will not be created, in the case of “Study Service” or “CDS Service” if both http and net.tcp were not provided then that endpoint will not be created at all.

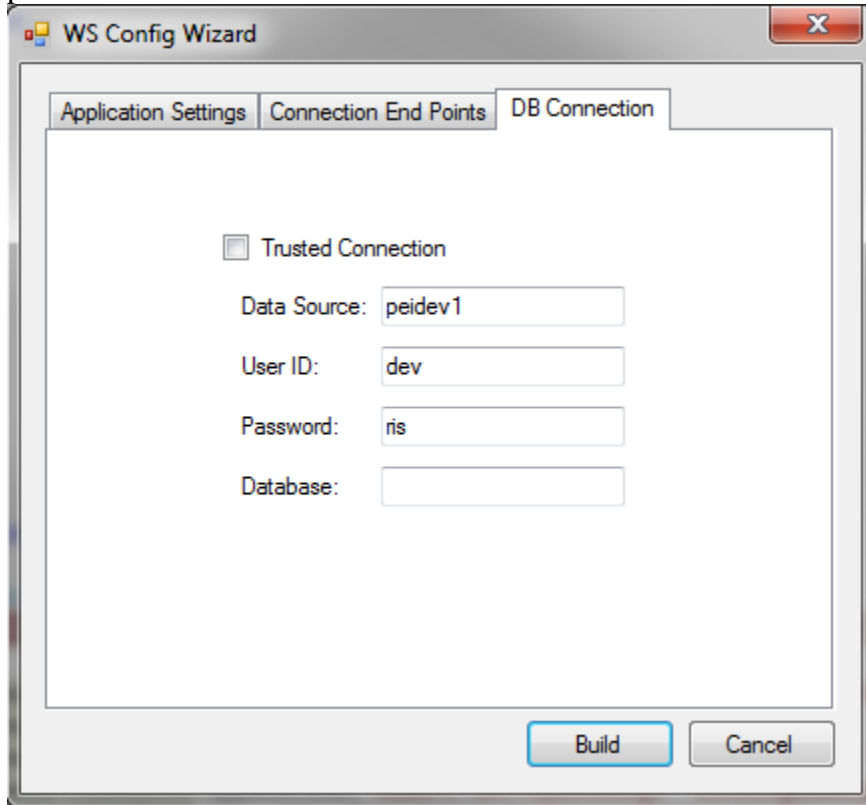


The screenshot shows the 'WS Config Wizard' dialog box with the 'Connection End Points' tab selected. The dialog has three tabs: 'Application Settings', 'Connection End Points', and 'DB Connection'. The 'Connection End Points' tab contains three sections: 'Study Service', 'Notify Service', and 'CDS Service'. Each section has two rows of input fields for 'http://' and 'net.tcp://' protocols, followed by a '/rRIS/' label. The 'Study Service' section has 'localhost:8040' and 'localhost:8041'. The 'Notify Service' section has 'localhost:7095'. The 'CDS Service' section has 'localhost:7092' and 'localhost:7093'. At the bottom right, there are 'Build' and 'Cancel' buttons.

Service	Protocol	Host:Port	Path
Study Service	http://	localhost:8040	/rRIS/
	net.tcp://	localhost:8041	/rRIS/
Notify Service	net.tcp://	localhost:7095	/rRIS/
	http://		
CDS Service	http://	localhost:7092	/rRIS/
	net.tcp://	localhost:7093	/rRIS/

## eRAD RIS Server Update

**DB Connection:** will display the existing configuration, if the Connection is to be used as a trusted connection, then the user ID and password will become disabled and will not be used, and will rely on the provided database value, When not using the trusted connection, The Database value is not needed but can be used to force a specific database connection as long as the provided user has access to that database.



It is always good practice to do a compare of the .config files.

- 1) Stop each service listed below. Copy the files from the RIS Service Updates folder to the directory for each rRISService.

*rRISService directories include:*

- a) *rRISService*
- b) *CDS rRISService*
- c) *Wedge rRISService*
- d) *DDE rRISService*

**Restart each service.**

