

Server Update

For eRAD RIS
Version 2.0
Build 2.2016.3
Update 2.2016.3.1

Table of Contents

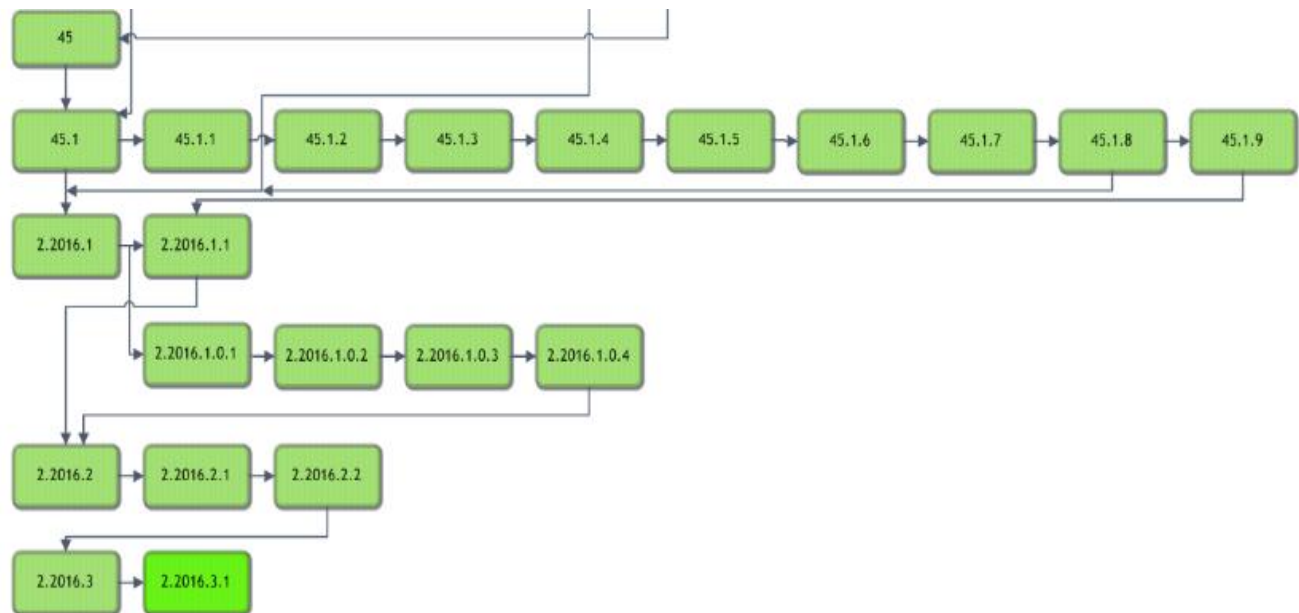
Resolved Items.....	3
Code Stream.....	4
Package Contents	5
Intended Audience	5
Who is affected	5
eRAD RIS Release Version Numbers	6
Installing	7
Client/GUI.....	7
Web Service	7
Database Updates.....	11

Resolved Items

Redmine #	Subject
14340	Changing procedure removes study from pending dictation worklist
14259	Patient folder default view not always loading on reporting screen
14247	Insurance Eligibility - Medical Group Rule feature not working

eRAD RIS Server Update

Code Stream








Legend:

Light Green = Previously Released software

Bright Green = Current Release

eRAD RIS Server Update

Package Contents

 _Documentation	07/28/2016 1:22 PM
 _ReleaseNotes	03/26/2012 11:02 AM
 DB	07/28/2016 1:18 PM
 rRISService	07/28/2016 1:21 PM
 ThickClient	07/28/2016 1:21 PM

Intended Audience

This document is created by the RIS Development team for the RadNet/eRAD RIS Implementation teams.

Who is affected

Build 2016.3 installs. This server update must be applied to 2016.3

eRAD RIS Server Update

eRAD RIS Release Version Numbers

Build	Patch	UI Version	Core Version	WS Version	DB Version	Digital Forms	Notes
43.1	-	2.43.1.0.25850(3GB)	2.43.0.0.23171	2.43.1.0.25850	2.43.1.0.25771		GUI.zip Web Service and DB Updates
43.2	-	2.43.2.0.26864(3GB)	2.43.0.0.23171	2.43.2.0.26864	2.43.1.0.25771		GUI.zip and Web Service
44	-	2.44.0.0.26570(3GB)	2.44.0.0.26405	2.44.0.0.26570	2.44.0.0.26475		Full Version Release
44.1	-	2.44.0.0.26984(3GB)	2.44.0.0.26405	2.44.0.0.26984	2.44.0.0.26906		Gui.zip, Web Service, and DB
44.1	1	2.44.1.1.27093(3GB)	2.44.0.0.26405	2.44.1.0.26984	2.44.1.0.26906		Gui.zip
44.2	-	2.44.2.0.27410(3GB)	2.44.0.0.26405	2.44.2.0.27410	2.44.2.0.27365		Gui.zip, Web Service, and DB
44.2	1	2.44.2.1.27959(3GB)	2.44.0.0.26405	2.44.2.1.27959	2.44.2.1.27909		Gui.zip, Web Service, and DB
44.2	2	2.44.2.1.27959(3GB)	2.44.0.0.26405	2.44.2.2.28094	2.44.2.1.27909		Web Service
44.3	-	2.44.3.0.28292	2.44.0.0.26405	2.44.3.0.28277	2.44.3.0.28138		Gui.zip, Web Service, and DB
44.3	1	2.44.3.1.28535(3GB)	2.44.0.0.26405	2.44.3.1.28535	2.44.3.0.28138		Gui.zip and Web Service
44.4	-	2.44.4.0.28762(3GB)	2.44.0.0.26405	2.44.4.0.28762	2.44.4.0.28676		Gui.zip, Web Server, DB, SSRS Deployment
44.4	1	2.44.4.1.28953(3GB)	2.44.0.0.26405	2.44.4.1.28953	2.44.4.0.28676		Gui.zip and Web Service
44.4	2	2.44.4.2.29327(3GB)	2.44.0.0.26405	2.44.4.2.29327	2.44.4.0.28676		Gui.zip and Web Service
44.4	3	2.44.4.2.29722(3GB)	2.44.0.0.26405	2.44.4.2.29327	2.44.4.0.28676		Gui.zip and Web Service
44.5	-	2.44.5.0.30022(3GB)	2.44.0.0.26405	2.44.5.0.30022	2.44.5.0.29976		Gui.zip, Web Server, DB
44.5	1	2.44.5.1.30451(3GB)	2.44.0.0.26405	2.44.5.1.30451	2.44.5.1.30449		Gui.zip, Web Server, DB
44.5	2	2.44.5.2.30705(3GB)	2.44.0.0.26405	2.44.5.1.30705	2.44.5.1.30554		Gui.zip, Web Server, DB
45	-	2.45.0.0.29559(3GB)	2.45.0.0.26107	2.45.0.0.29559	2.45.0.0.29558		Full Version Release
45.1	-	2.45.1.0.30774(3GB)	2.45.0.0.26107	2.45.1.0.30774	2.45.1.0.30738		Gui.zip, Web Service, DB, SQLReporting, Questionnaire, Citrix support
45.1	1	2.45.1.1.31175(3GB)	2.45.0.0.26107	2.45.1.1.31175	2.45.1.1.31174		Gui.zip, Web Service, DB, SQLReporting, Questionnaire
45.1	2	2.45.1.1.31175(3GB)	2.45.0.0.26107	2.45.1.2.31378	2.45.1.1.31174		Web Service and Citrix Bridge
45.1	3	2.45.1.3.31452(3GB)	2.45.0.0.26107	2.45.1.3.31452	2.45.1.3.31369		GUI.zip, Web Service, DB, Questionnaire and Citrix Bridge
45.1	4	2.45.1.4.31621(3GB)	2.45.0.0.26107	2.45.1.4.31621	2.45.1.4.31599		GUI.zip, Web Service, DB, Questionnaire and Citrix Bridge
45.1	5	2.45.1.5.31773(3GB)	2.45.0.0.26107	2.45.1.5.31773	2.45.1.5.31771		GUI.zip, Web Service, DB, Questionnaire
45.1	6	2.45.1.6.32070(3GB)	2.45.0.0.26107	2.45.1.6.32070	2.45.1.6.31936		GUI.zip, Web Service, DB, Questionnaire, Citrix Bridge
45.1	7	2.45.1.6.32070(3GB)	2.45.0.0.26107	2.45.1.6.32070	2.45.1.6.31936		Web Service for Wedge only. Version number of Wedge is 45.1.6.32614
45.1	8	2.45.1.8.33254(3GB)	2.45.0.0.26107	2.45.1.6.32070	2.45.1.6.31936		GUI.zip
45.1	9	2.45.1.9.33573(3GB)	2.45.0.0.26107	2.45.1.6.32070	2.45.1.6.31936		GUI.zip
2016.1	-	2.16.1.0.33419 (3GB)	2.16.1.0.33079	2.16.1.0.33419	2.16.1.0.33416		GUI.zip, Web Service, DB, Management Reports, Questionnaire and Citrix Bridge
2016.1	1	2.16.1.1.33672 (3GB)	2.16.1.0.33079	2.16.1.0.33419	2.16.1.0.33416		GUI.zip
2016.1	.0.1	2.16.1.0.1 (3GB)	2.16.1.0.33079	2.16.1.0.33419	2.16.1.0.33416		GUI.zip (This is not included in 2016.1.1, version directly above)
2016.1	.0.2	2.16.1.0.1 (3GB)	2.16.1.0.33079	2.16.1.0.2	2.16.1.0.33416		Wedge Web Services only
2016.1	.0.3	2.16.1.0.3 (3GB)	2.16.1.0.33079	2.16.1.0.3	2.16.1.0.3.00128918		GUI.zip, Web Services and DB
2016.1	.0.4	2.16.1.0.4 (3GB)	2.16.1.0.33079	2.16.1.0.4	2.16.1.0.3.00128918		GUI.zip, Web Services
2016.2	-	2.16.2.0 (3GB)	2.16.2.0	2.16.2.0	2.16.2.0.00172540		Full Version Release - GUI.zip, Web Service, DB, Management Reports, Questionnaire and Citrix Bridge
2016.2	1	2.16.2.1 (3GB)	2.16.2.0	2.16.2.0	2.16.2.0.00172540		GUI.zip and Citrix Bridge
2016.2	2	2.16.2.2 (3GB)	2.16.2.0	2.16.2.0	2.16.2.2.00243102		GUI.zip, DB and Citrix Bridge
2016.3	-	2.16.3.0 (3GB)	2.16.3.0	2.16.3.0	2.16.3.0.00257101	2.16.3.0	Full Version Release
2016.3	1	2.16.3.1 (3GB)	2.16.3.0	2.16.3.1	2.16.3.1.00298834	2.16.3.0	GUI.zip, Web Service and DB

eRAD RIS Server Update

Installing

Client/GUI

- 1) Copy and replace the current rRIS...zip file with the eRAD_rRIS_2016.3.1.zip file provided with this release.
Be sure to make a backup of the ris.exe.config file contained within the current .zip folder.

Web Service

This update is only required for the Wedge Web Services. The Core RIS Service and Document Distribution Service are not required to be updated.

1. The web service upgrade consists of replacing the files in the RIS Web Service directory with the files supplied in the rRISService folder with this build. Always create a backup of the files being replaced. This upgrade includes 98 files in the rRISService folder and 6 sub folders. Of those folders, 1 is a folder titled “XSL” that contains a sub folder and files within the subfolder. Another folder is titled “**deploy**” that contains the new .config files that will be deployed with the user of the file called “ServicesConfigWizard.exe” (see instructions below). Folders ar (Arabic), he (Hebrew), and pt_BR (Brazilian Portuguese) are localization folders. The WedgePlugins folder contains various plugin files for RADAR, MIRTH, Ensemble, etc...

Services Configuration Wizard

With the release of 42 to decrease the chance of losing configuration setting and missing new configuration options, we will no longer include the configuration files in the release in the main set of files, but they will now exist in a “deploy” folder, which will contain the three site configurable config files; applicationsettings, connectionstrings, and services as well as a copy of the rRISServices.exe configuration file. The contents of this folder should not be required to be touched.

On the install of a new service, all files will be copied to the appropriate locations on the server (no configurations will be over written). If instructed or to confirm no new configurations have been added the user can run the new application “ServicesConfigWizard.exe”

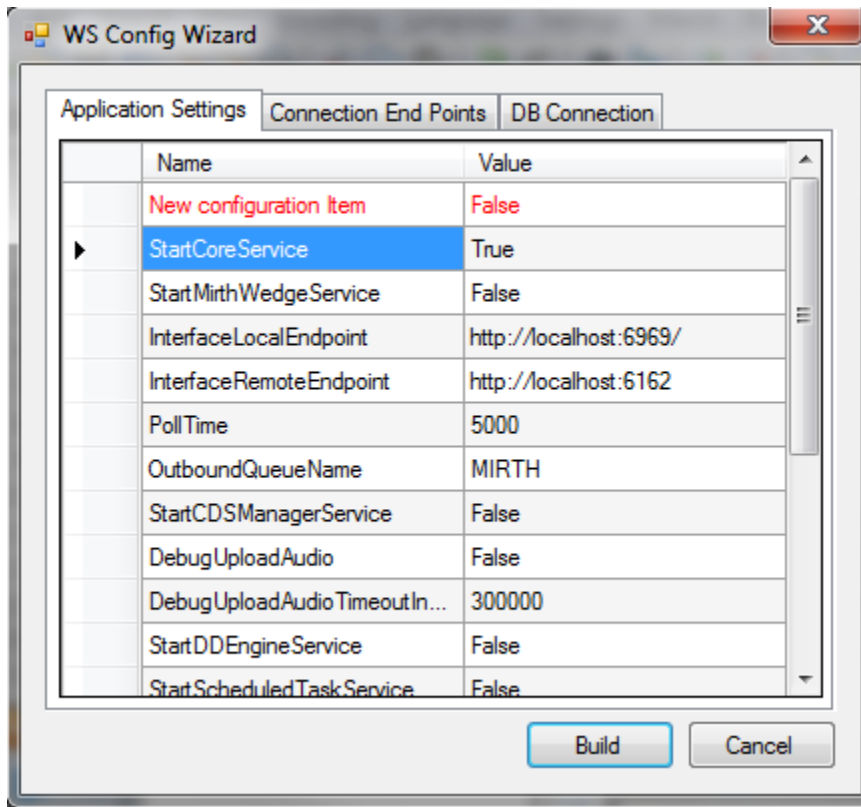
This application will read the existing configuration file(s) (if files exist), and compare to the provided new configuration files then will display three tabs, for each configuration file:

Application Settings: all existing configuration value will be displayed, if there are any new configuration entries they will be displayed in red.

NOTE: the rRISServices.exe.config file is also included in the deploy folder. If this file has changes it **will not** update your current file in the Web Service directory. Any changes to this file

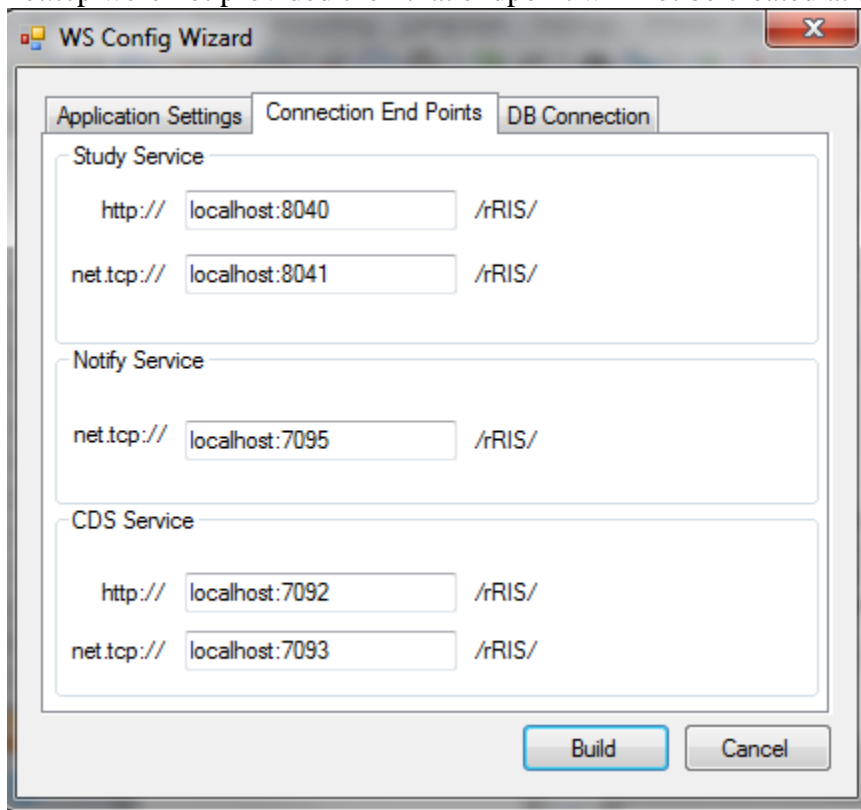
eRAD RIS Server Update

will require a manual update of the rRISServices.exe.config and rRISServicesx64.exe.config files.



eRAD RIS Server Update

Connection End Points: will display the existing configuration, if the value is left blank then that entry will not be created, in the case of “Study Service” or “CDS Service” if both http and net.tcp were not provided then that endpoint will not be created at all.

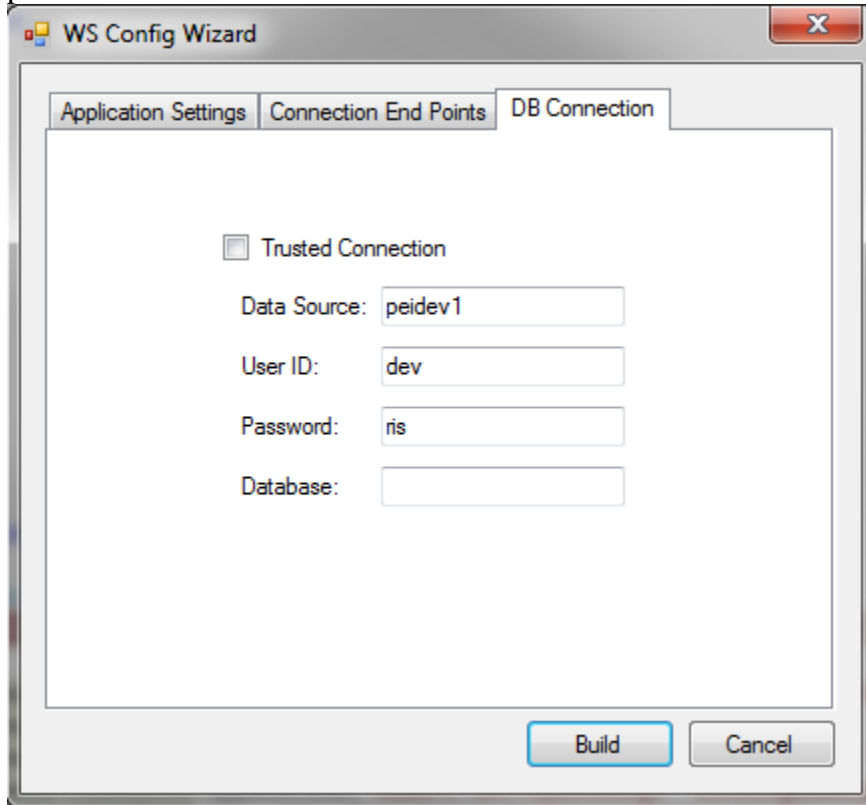


The screenshot shows the 'WS Config Wizard' dialog box with the 'Connection End Points' tab selected. The dialog has three tabs: 'Application Settings', 'Connection End Points', and 'DB Connection'. The 'Connection End Points' tab contains three sections: 'Study Service', 'Notify Service', and 'CDS Service'. Each section has two rows of input fields for 'http://' and 'net.tcp://' endpoints, followed by a '/rRIS/' label. The 'Study Service' section has 'localhost:8040' and 'localhost:8041'. The 'Notify Service' section has 'localhost:7095'. The 'CDS Service' section has 'localhost:7092' and 'localhost:7093'. At the bottom right are 'Build' and 'Cancel' buttons.

Service	Protocol	Host:Port	Path
Study Service	http://	localhost:8040	/rRIS/
	net.tcp://	localhost:8041	/rRIS/
Notify Service	net.tcp://	localhost:7095	/rRIS/
	http://		
CDS Service	http://	localhost:7092	/rRIS/
	net.tcp://	localhost:7093	/rRIS/

eRAD RIS Server Update

DB Connection: will display the existing configuration, if the Connection is to be used as a trusted connection, then the user ID and password will become disabled and will not be used, and will rely on the provided database value, When not using the trusted connection, The Database value is not needed but can be used to force a specific database connection as long as the provided user has access to that database.



It is always good practice to do a compare of the .config files.

- 1) Stop each service listed below. Copy the files from the RIS Service Updates folder to the directory for each rRISService.

rRISService directories include:

- a) *rRISService*
- b) *CDS rRISService*
- c) *Wedge rRISService*
- d) *DDE rRISService*

Restart each service.

eRAD RIS Server Update

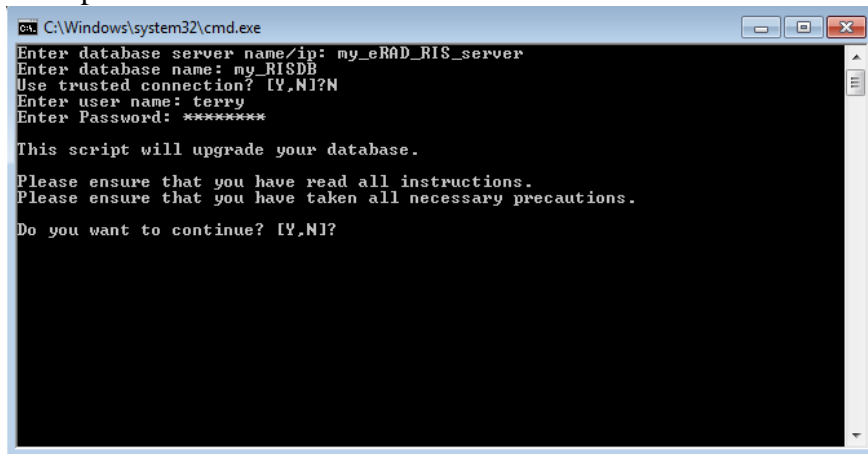
Database Updates

Always run the upgrade scripts in a test environment of the actual database to make sure they run cleanly. If any errors occur please contact development.

Note: There is a new upgrade process introduced with B43.1 called "RunUpgrade.bat". The batch file will open a command window. This process will prompt you for the database server name, database name and authentication credentials. There is no need to run the database upgrade scripts manually as was done in previous releases.

- 1) From the upgrade folder, double click the "RunUpgrade.bat" command file.
- 2) Enter the server name, database name and authentication credentials to the database. You have 2 choices for authentication credentials.
- 3) You can choose to use "Trusted connection". Using this option will pass the identity of the currently logged on user. If this user has "db_owner" access to the eRAD RIS database then feel free to use this options.
- 4) If you decide not to use "Trusted connection" then you will be prompted for user id and password.

Example:



```
C:\Windows\system32\cmd.exe
Enter database server name/ip: my_eRAD_RIS_server
Enter database name: my_RISDB
Use trusted connection? [Y,N]?N
Enter user name: terry
Enter Password: *****

This script will upgrade your database.

Please ensure that you have read all instructions.
Please ensure that you have taken all necessary precautions.

Do you want to continue? [Y,N]?
```

- 5) After the upgrade program has finished you can find the upgrade logs in the "log" folder. The file name will be eRAD_RIS_db_upgrade_timestamp.log, where timestamp is a value representing the date and time the upgrade started. If you see any errors please contact the development team
- 6) In the Common folder there is a subfolder of MU. The MU folder contains updates to lookups relevant for MU as well as updates for Zip Code table to add the County. Copy the

eRAD RIS Server Update

MU folder to the database server before running the batch file. There is a readme file contained in the MU folder. The details have also been included below

- a) The mu bulk install process must be run from a path on the database server!
 - b) Copy Files ImportDataFileUpgradeDB.bat and ImportDataFileUpgradeDB.sql from upgrade folder to a location on the database server(This location will be referred to as the "Script Folder Path".)
 - c) Copy Folder scripts and Source files from the upgrade folder to "Script Folder Path"
....Note source files must be inside the scripts folder
 - d) Run bat file
 - i) Enter Script Folder path [C:\Temp\SNOMED]:
 - ii) Enter database server name/ip: [ie peidev1]
 - iii) Enter database name: [ie rRIS_MU]
 - iv) Use a trusted connection to log on to SQL Server:
"N" means you will have to enter db [username] [password]
"Y" means you have a trusted connection and will not have to enter [username][password]
 - v) Do you wish to load SNOMED concept codes?
"N" no files will be loaded into the l_snomed_concept table
"Y" yes means l_snomed_concept table will be truncated and reloaded with the latest US concept codes
Source File [sct2_Concept_Snapshot_US1000124_20140301.txt]
 - vi) Do you wish to load SNOMED descriptions codes?
"N" no files will be loaded into the l_snomed_description table
"Y" yes means the l_snomed_description table will be truncated and reloaded with the latest US description codes
Source File [sct2_Description_Snapshot-en_US1000124_20140301.txt]
 - vii) Do you wish to load ICD9 to SNOMED mappings codes?
"N" no files will be loaded into the l_snomed_icd9_map table
"Y" yes means the l_snomed_icd9_map table will be truncated and reloaded with the latest US ICD9 to SNOMED mapping codes
Source File [ICD9CM_SNOMED_MAP_1TO1_201312.txt and ICD9CM_SNOMED_MAP_1TOM_201312.txt]
 - viii) Do you wish to load ICD10 to SNOMED mappings codes?
"N" no files will be loaded into the l_snomed_icd10_map table
"Y" yes means the l_snomed_icd10_map table will be truncated and reloaded with the latest US ICD10 to SNOMED mapping codes
Source File [xder2_iisssccRefset_ExtendedMapSnapshot_US1000124_20131220.txt]
 - ix) Do you wish to load US zip codes?
"N" no files will be loaded into the z_zipCodesWithCounty table
"Y" yes means the z_zipCodesWithCounty table will be truncated and reloaded with the latest US zip codes
Source File [5-digit Commercial.csv]
-

eRAD RIS Server Update

Note: the following files should be loaded once only with B43!

x) Do you wish to load CMS codes?

"N" no files will be loaded into the s_mu_code table

"Y" yes means the s_mu_code table will be truncated and reloaded with the latest CMS codes

Source File [s_mu_code.txt]

xi) Do you wish to load HL7 support sets for CCDA?

"N" no files will be loaded into the l_hl7v3_voc_value_set table

"Y" yes means the l_hl7v3_voc_value_set table will be truncated and reloaded with the latest hl7v3_voc_value_set codes

Source File [l_hl7_voc_value_set.txt]

xii) Do you wish to load HL7 support codes for CCDA?

"N" no files will be loaded into the l_hl7v3_voc_value_code table

"Y" yes means the l_hl7v3_voc_value_code table will be truncated and reloaded with the latest l_hl7v3_voc_value_code codes

Source File [l_hl7_voc_value_code.txt]