

Server Update

For eRAD RIS
Version 2.0
Build 45.1
Update 45.1.9

Table of Contents

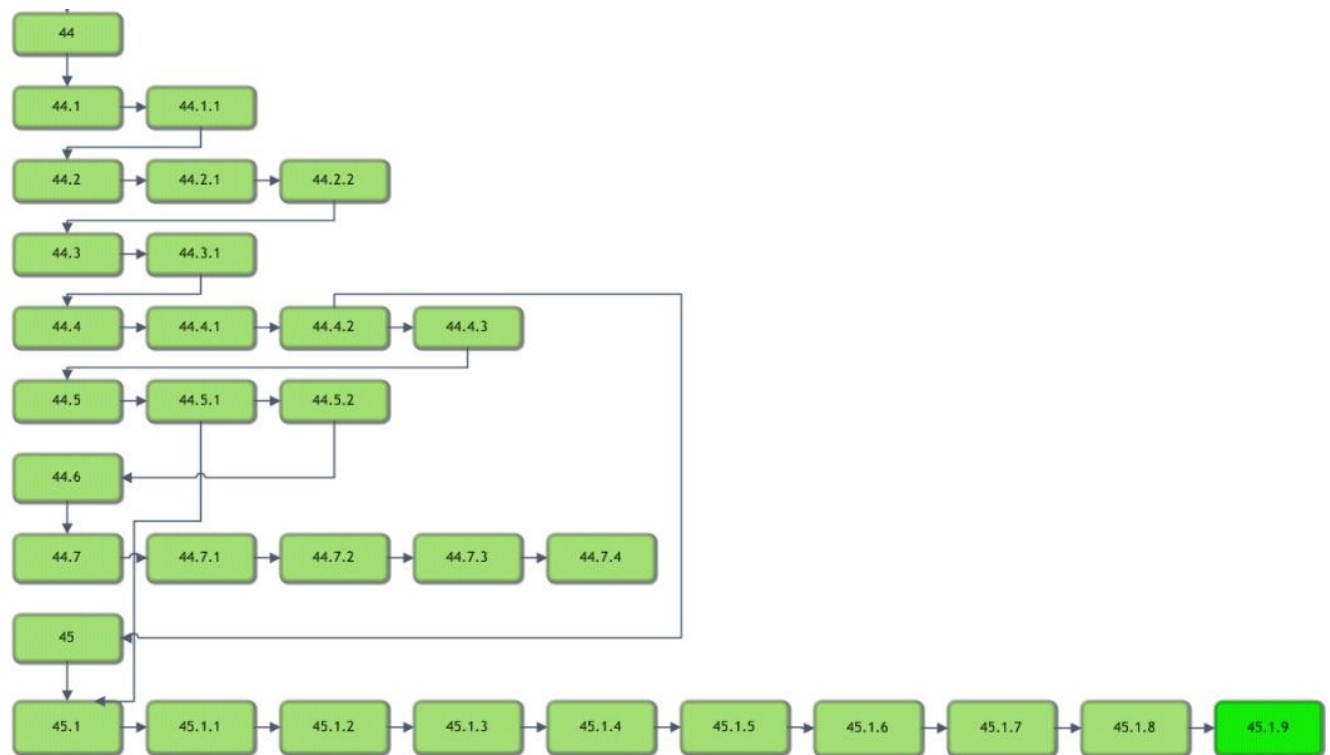
Resolved Items.....	3
Code Stream.....	4
Package Contents	5
Intended Audience	5
Who is affected	5
eRAD RIS Release Version Numbers	6
Installing	7
Client/GUI.....	7

Resolved Items

Redmine #	Subject	Priority
12720	PACS integration intermittent for both Radiologists and technicians	Urgent (next build)
12529	IW or CSH PACS integration - produces an error and crashes RIS	Urgent (next build)
12427	PACS images not synced with current report after timeout exceeded in eRAD RIS	Urgent (next build)
12552	RIS hang during exit	High
12530	eRAD PACS - Integration - if 2 studies are opened and both do not have images attached. RIS gets stalled until OK is clicked on "Invalid study file" message	Normal
12528	ERAD PACS - Integration - using the next workflow the 'Waiting for PACS' message times out when relevant studies to open is greater than 0	Normal
12495	PACS Integration - Waiting for PACS message, when Cancel is chosen get a "Thread was being aborted" message.	Normal
12428	When prompted "Action required in PACS" and you kill PACS, clicking OK to message should allow you to continue working in RIS without PACS.	Normal
10672	PACS Sync - Images can remain shown for previous patient when opening a report to sign off	Normal

eRAD RIS Server Update

Code Stream



Legend:

Light Green = Released software

Gray = Will not be released

Bright Green = Current Release

eRAD RIS Server Update

Package Contents

 _ReleaseNotes	2/25/2016 4:30 PM
 ThickClient	2/25/2016 4:26 PM

Intended Audience

This document is created by the RIS Development team for the RadNet/eRAD RIS Implementation teams.

Who is affected

Build 45.1 installs. This server update must be applied to 45.1.6

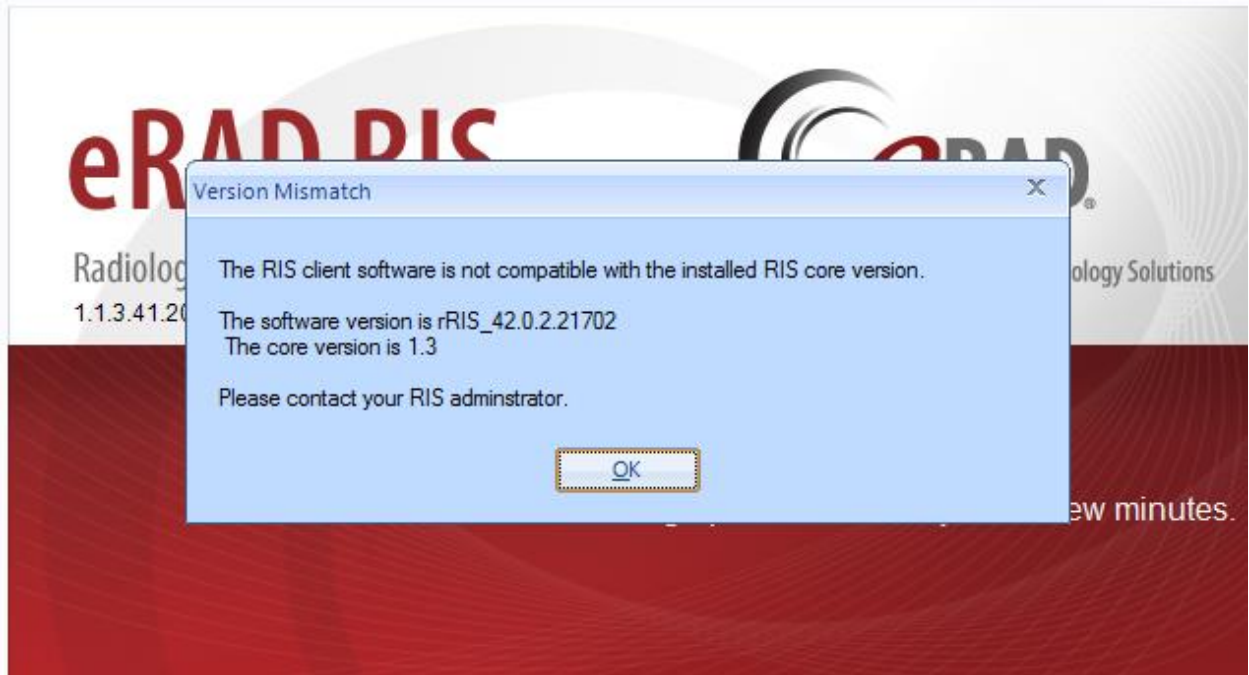
eRAD RIS Release Version Numbers

Build	Patch	UI Version	Core Version	WS Version	DB Version	Notes
43.1	-	2.43.1.0.25850(3GB)	2.43.0.0.23171	2.43.1.0.25850	2.43.1.0.25771	Gui.zip Web Service and DB Updates
43.2	-	2.43.2.0.26864(3GB)	2.43.0.0.23171	2.43.2.0.26864	2.43.1.0.25771	Gui.zip and Web Service
44	-	2.44.0.0.26570(3GB)	2.44.0.0.26405	2.44.0.0.26570	2.44.0.0.26475	Full Version Release
44.1	-	2.44.0.0.26984(3GB)	2.44.0.0.26405	2.44.0.0.26984	2.44.0.0.26906	Gui.zip, Web Service, and DB
44.1	1	2.44.1.1.27093(3GB)	2.44.0.0.26405	2.44.1.0.26984	2.44.1.0.26906	Gui.zip
44.2	-	2.44.2.0.27410(3GB)	2.44.0.0.26405	2.44.2.0.27410	2.44.2.0.27365	Gui.zip, Web Service, and DB
44.2	1	2.44.2.1.27959(3GB)	2.44.0.0.26405	2.44.2.1.27959	2.44.2.1.27909	Gui.zip, Web Service, and DB
44.2	2	2.44.2.1.27959(3GB)	2.44.0.0.26405	2.44.2.2.28094	2.44.2.1.27909	Web Service
44.3	-	2.44.3.0.28292	2.44.0.0.26405	2.44.3.0.28277	2.44.3.0.28138	Gui.zip, Web Service, and DB
44.3	1	2.44.3.1.28535(3GB)	2.44.0.0.26405	2.44.3.1.28535	2.44.3.0.28138	Gui.zip and Web Service
44.4	-	2.44.4.0.28762(3GB)	2.44.0.0.26405	2.44.4.0.28762	2.44.4.0.28676	Gui.zip, Web Server, DB, SSRS Deployment
44.4	1	2.44.4.1.28953(3GB)	2.44.0.0.26405	2.44.4.1.28953	2.44.4.0.28676	Gui.zip and Web Service
44.4	2	2.44.4.2.29327(3GB)	2.44.0.0.26405	2.44.4.2.29327	2.44.4.0.28676	Gui.zip and Web Service
44.4	3	2.44.4.2.29722(3GB)	2.44.0.0.26405	2.44.4.2.29327	2.44.4.0.28676	Gui.zip and Web Service
44.5	-	2.44.5.0.30022(3GB)	2.44.0.0.26405	2.44.5.0.30022	2.44.5.0.29976	Gui.zip, Web Server, DB
44.5	1	2.44.5.1.30451(3GB)	2.44.0.0.26405	2.44.5.1.30451	2.44.5.1.30449	Gui.zip, Web Server, DB
44.5	2	2.44.5.2.30705(3GB)	2.44.0.0.26405	2.44.5.1.30705	2.44.5.1.30554	Gui.zip, Web Server, DB
45	-	2.45.0.0.29559(3GB)	2.45.0.0.26107	2.45.0.0.29559	2.45.0.0.29558	Full Version Release
45.1	-	2.45.1.0.30774(3GB)	2.45.0.0.26107	2.45.1.0.30774	2.45.1.0.30738	Gui.zip, Web Service, DB, SQLReporting, Questionnaire, Citrix support
45.1	1	2.45.1.1.31175(3GB)	2.45.0.0.26107	2.45.1.1.31175	2.45.1.1.31174	Gui.zip, Web Service, DB, SQLReporting, Questionnaire
45.1	2	2.45.1.1.31175(3GB)	2.45.0.0.26107	2.45.1.2.31378	2.45.1.1.31174	Web Service and Citrix Bridge
45.1	3	2.45.1.3.31452(3GB)	2.45.0.0.26107	2.45.1.3.31452	2.45.1.3.31369	Gui.zip, Web Service, DB, Questionnaire and Citrix Bridge
45.1	4	2.45.1.4.31621(3GB)	2.45.0.0.26107	2.45.1.4.31621	2.45.1.4.31599	Gui.zip, Web Service, DB, Questionnaire and Citrix Bridge
45.1	5	2.45.1.5.31773(3GB)	2.45.0.0.26107	2.45.1.5.31773	2.45.1.5.31771	Gui.zip, Web Service, DB, Questionnaire
45.1	6	2.45.1.6.32070(3GB)	2.45.0.0.26107	2.45.1.6.32070	2.45.1.6.31936	Gui.zip, Web Service, DB, Questionnaire, Citrix Bridge
45.1	7	2.45.1.6.32070(3GB)	2.45.0.0.26107	2.45.1.6.32070	2.45.1.6.31936	Web Service for Wedge only. Version number of Wedge is 45.1.6.32614
45.1	8	2.45.1.8.33254(3GB)	2.45.0.0.26107	2.45.1.6.32070	2.45.1.6.31936	Gui.zip
45.1	9	2.45.1.9.33573(3GB)	2.45.0.0.26107	2.45.1.6.32070	2.45.1.6.31936	Gui.zip

Installing

Client/GUI

- 1) Copy and replace the current rRIS...zip file with the rRIS_1.3.45.1.9.33573.zip file provided with this release.
Be sure to make a backup of the ris.exe.config file contained within the current .zip folder.



If you receive the Version Mismatch error above the GUI.zip will need to be renamed to add 1.3. to it. The GUI.zip file name change is from rRIS_45.1.9.33573 → rRIS_1.3.45.1.9.33573

NOTE: the GUI.zip included with this release has already been renamed to include 1.3.

This is required for installs that have not reached build 42. Because the software installed on your local workstation is a pre-42 build it detects a version mismatch in the software naming and won't allow the newest build to be launched (it is looking for 1.3. in the name). Once the workstation(s) have reached a build of 42 we will no longer need to add "1.3." to the GUI.zip name. Also note that a core install will not resolve this issue below.

NOTE: If your upgrade is coming from 40.016.1 or prior a core install will be required. Versions (builds) of 40.017 and greater do not require a core install as long as you are at least at 40.017 (Core Version 1.3.40.18756)