

Server Update

For eRAD RIS

Version 2.0

Build 2.2017.1

Update 2.2017.1.4

Table of Contents

Package Contents	3
Intended Audience	3
Who is affected.....	3
New Features.....	4
Feature #16591 – Strip last character from variables passed to external portals	4
Resolved Items	5
Code Stream	6
eRAD RIS Release Version Numbers	7
Installing	8
Client/GUI.....	8
Web Service	8
Database Updates	10

PACKAGE CONTENTS

 _ReleaseNotes	05/02/2017 11:31 AM
 DB	05/02/2017 11:28 AM
 PatientConnect	05/02/2017 10:54 AM
 rRISService	05/02/2017 9:40 AM
 ThickClient	05/02/2017 11:28 AM

INTENDED AUDIENCE

The intended audience for this document is the RadNet Clinical Systems team and the eRAD Support/Service team.

WHO IS AFFECTED

Build 2017.1 installs. This server update must be applied to 2017.1.3.

NEW FEATURES

FEATURE #16591 – STRIP LAST CHARACTER FROM VARIABLES PASSED TO EXTERNAL PORTALS

The existing portal feature in eRAD RIS allows the customer to pass patient data to external portals, such as a Health Information Exchange (HIE), in order to pull up records in the external portal. There was an international requirement to strip the last character from the MRN before passing it to the portal.

A new plugin has been added which allows the user to strip the last character from any variable.

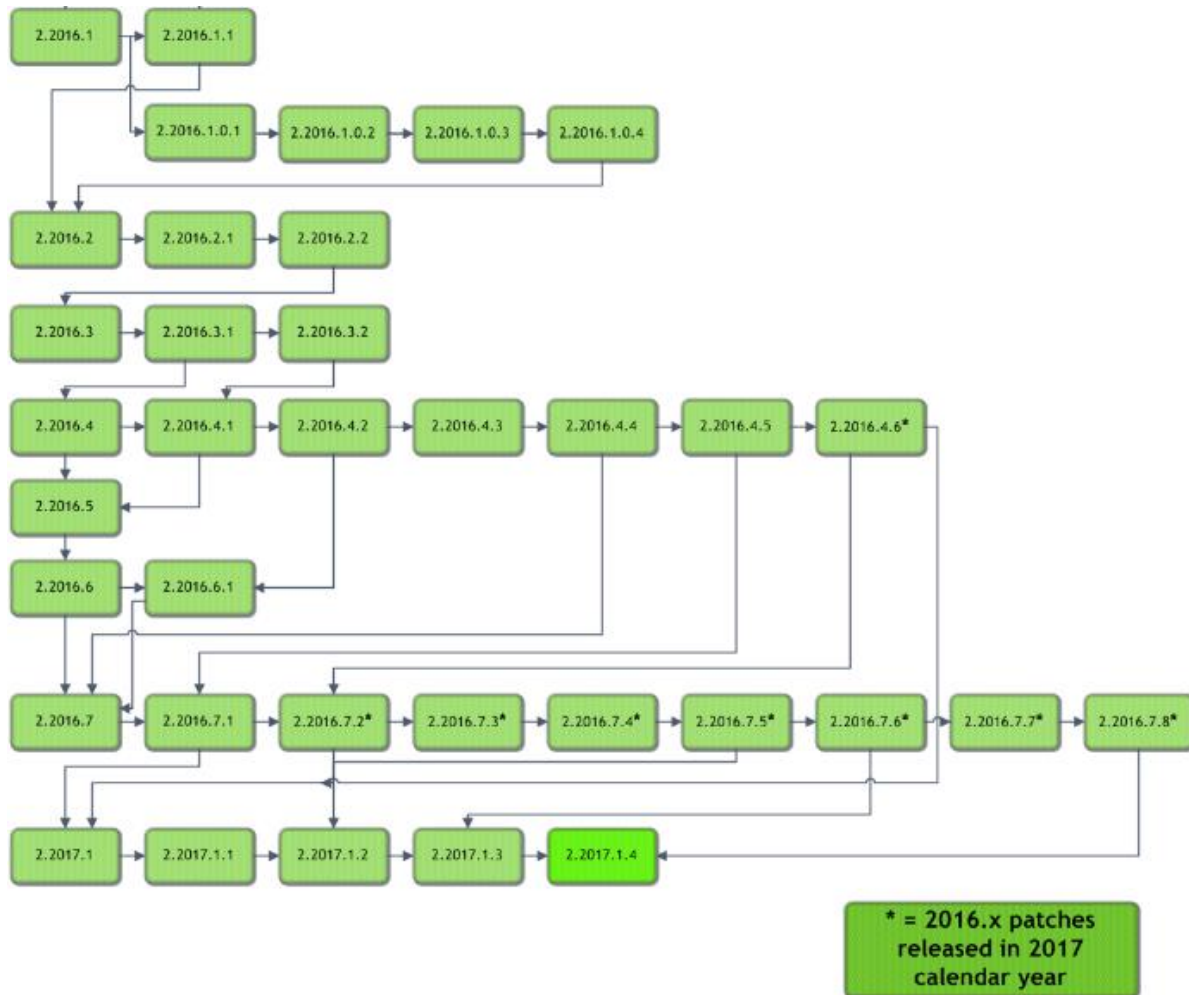
When creating/updating an entry in BrowserConfig, the URL can support using “filters” in the URL string. For example, to get the patient id into the URL of the portal page to be opened, the variable would be specified as {patient.c_patient.patient_id}. To strip the last character from the patient id, this would need to be changed to: {patient.c_patient.patient_id |StripLastChar}. The additional text in blue tells the RIS to send the patient_id value through the StripLastChar filter before adding the value to the URL that passes the data to the external portal.

RESOLVED ITEMS

eRAD RIS

Redmine #	Subject
17061	Resolved an error that prevented the addition of a billing code which had been previously deleted.
17059	An intermittent error for referring physicians with imaging preferences no longer occurs.
16924	Resolved intermittent patient history errors that occurred when starting or completing an exam in technologist workflow.
16901	Selected attachment viewer in reporting screens can once again display the report.
16883	CSH images now close properly after closing Dictation.
16882	Restored the ability to open the IVT screen for a cancelled order.
16869	Resolved an issue that could cause billing code units to be null when scheduling an exam that was previously Saved as Order.
16997	Restored the ability to save attachments from the "Attachments" context menu item.
16983	Rescheduled studies with unknown referring are once again appearing on the Unknown Reconciliation WL as intended.
16965	Peer review button is available when the selected report is displayed on Selected Attachment data pane in the reporting screen, even after scrolling through other documents and returning to the report.
16984	Diagnostic report is no longer missing the report body when first retrieved by External Interface Service.

CODE STREAM

**Legend:**

Light Green = Previously Released software

Bright Green = Current Release

ERAD RIS RELEASE VERSION NUMBERS

Build	Patch	UI Version	Core Version	WS Version	DB Version	Digital Forms	Patient Portal	UM Portal	Notes
2016.1	1	2.16.1.1.33672 (3GB)	2.16.1.0.33079	2.16.1.0.33419	2.16.1.0.33416				GUI.zip
2016.1	.0.1	2.16.1.0.1 (3GB)	2.16.1.0.33079	2.16.1.0.33419	2.16.1.0.33416				GUI.zip (This is not included in 2016.1.1, version directly above)
2016.1	.0.2	2.16.1.0.1 (3GB)	2.16.1.0.33079	2.16.1.0.2	2.16.1.0.33416				Wedge Web Services only
2016.1	.0.3	2.16.1.0.3 (3GB)	2.16.1.0.33079	2.16.1.0.3	2.16.1.0.3.00128918				GUI.zip, Web Services and DB
2016.1	.0.4	2.16.1.0.4 (3GB)	2.16.1.0.33079	2.16.1.0.4	2.16.1.0.3.00128918				GUI.zip, Web Services
2016.2	-	2.16.2.0 (3GB)	2.16.2.0	2.16.2.0	2.16.2.0.00172540				Full Version Release - GUI.zip, Web Service, DB, Management Reports, Questionnaire and Citrix Bridge
2016.2	1	2.16.2.1 (3GB)	2.16.2.0	2.16.2.0	2.16.2.0.00172540				GUI.zip and Citrix Bridge
2016.2	2	2.16.2.2 (3GB)	2.16.2.0	2.16.2.0	2.16.2.2.00243102				GUI.zip, DB and Citrix Bridge
2016.3	-	2.16.3.0 (3GB)	2.16.3.0	2.16.3.0	2.16.3.0.00257101	2.16.3.0			Full Version Release
2016.3	1	2.16.3.1	2.16.3.0	2.16.3.1	2.16.3.1.00298834	2.16.3.0			GUI.zip, Web Service and DB
2016.3	2	2.16.3.2	2.16.3.0	2.16.3.2	2.16.3.1.00298834	2.16.3.0			GUI.zip and Web Service
2016.4	-	2.16.4.0	2.16.4.0	2.16.4.0	2.16.4.0.00301943	2.16.4.0	1.16.4.0.310284		Full Version Release
2016.4	1	2.16.4.1	2.16.4.0	2.16.4.1	2.16.4.0.00301943	2.16.4.0	1.16.4.0.310284		GUI and Web Service updates
2016.4	2	2.16.4.2 (3GB)	2.16.4.0	2.16.4.1	2.16.4.0.00301943	2.16.4.0	1.16.4.2.460241		GUI and Patient Portal updates
2016.4	3	2.16.4.3 (3GB)	2.16.4.0	2.16.4.3	2.16.4.3.00483474	2.16.4.0	1.16.4.3.489120		GUI and Patient Portal updates
2016.4	4	2.16.4.4 (3GB)	2.16.4.0	2.16.4.3	2.16.4.3.00483474	2.16.4.0	1.16.4.3.489120		GUI
2016.4	5	2.16.4.5 (3GB)	2.16.4.0	2.16.4.3	2.16.4.3.00483474	2.16.4.0			GUI
2016.4	6	2.16.4.6 (3GB)	2.16.4.0	2.16.4.3	2.16.4.3.00483474	2.16.4.0			GUI
2016.5	-	2.16.5.0 (3GB)	2.16.5.0	2.16.5.0	2.16.5.0.00349303	2.16.5.0	1.16.5.0.362009		Full Version Release
2016.6	-	2.16.6.0 (3GB)	2.16.6.0	2.16.6.0	2.16.6.0.00411295	2.16.6.0	1.16.6.0.432471		Full Version Release
2016.6	1	2.16.6.1 (3GB)	2.16.6.0	2.16.6.0	2.16.6.0.00411295	2.16.6.0	1.16.6.1.468583		GUI and Patient Portal updated
2016.7	-	2.16.7.0 (3GB)	2.16.7.0	2.16.7.0	2.16.7.0.00490835	2.16.7.0	1.16.7.0.493031	2.16.7.0.493008	Full version release
2016.7	1	2.16.7.1 (3GB)	2.16.7.0	2.16.7.1	2.16.7.0.00490835	2.16.7.0	1.16.7.0.493031	2.16.7.0.493008	GUI and Web Service updates
2016.7	2	2.16.7.2 (3GB)	2.16.7.0	2.16.7.2	2.16.7.0.00490835	2.16.7.0	1.16.7.0.493031	2.16.7.0.493008	GUI and Web Service updates
2016.7	3	2.16.7.3 (3GB)	2.16.7.0	2.16.7.3	2.16.7.0.00490835	2.16.7.0	1.16.7.0.493031	2.16.7.0.493008	GUI and Web Service updates
2016.7	4	2.16.7.4 (3GB)	2.16.7.0	2.16.7.3	2.16.7.0.00490835	2.16.7.0	1.16.7.0.493031	2.16.7.0.493008	GUI
2016.7	5	2.16.7.5 (3GB)	2.16.7.0	2.16.7.3	2.16.7.0.00490835	2.16.7.0	1.16.7.0.493031	2.16.7.0.493008	GUI
2016.7	6	2.16.7.6 (3GB)	2.16.7.0	2.16.7.6	2.16.7.0.00490835	2.16.7.0	1.16.7.0.493031	2.16.7.0.493008	GUI and Web Service updates
2016.7	7	2.16.7.7 (3GB)	2.16.7.0	2.16.7.7	2.16.7.0.00490835	2.16.7.0	1.16.7.0.493031	2.16.7.0.493008	GUI and Web Service updates
2016.7	8	2.16.7.8 (3GB)	2.16.7.0	2.16.7.7	2.16.7.8.00683507	2.16.7.0	1.16.7.0.493031	2.16.7.0.493008	GUI and DB updates
2017.1	-	2.17.1.0 (3GB)	2.17.1.0	2.17.1.0	2.17.1.0.00559886	2.17.1.0	2.17.1.0.572290	2.17.1.0.00000	Full Version Release
2017.1	1	2.17.1.1 (3GB)	2.17.1.0	2.17.1.1	2.17.1.1.00589952	2.17.1.0	2.17.1.0.572290	2.17.1.0.00000	GUI, Web Service and DB updates
2017.1	2	2.17.1.2 (3GB)	2.17.1.0	2.17.1.2	2.17.1.2.00621962	2.17.1.0	2.17.1.0.572290	2.17.1.0.00000	GUI, Web Service and DB updates
2017.1	3	2.17.1.3 (3GB)	2.17.1.0	2.17.1.3	2.17.1.3.00640480	2.17.1.0	2.17.1.0.572290	2.17.1.0.00000	GUI, Web Service and DB updates
2017.1	4	2.17.1.4 (3GB)	2.17.1.0	2.17.1.4	2.17.1.4.00692239	2.17.1.0	2.17.1.4.701924	2.17.1.0.00000	GUI, Web Service, DB and Patient Portal updates

INSTALLING

CLIENT/GUI

Copy and replace the current rRIS...zip file with the eRAD_rRIS_2017.1.4.zip file provided with this release.

Be sure to make a backup of the ris.exe.config file contained within the current .zip folder.

WEB SERVICE

This updated is only required for the Wedge Web Services. The Core RIS Service and Document Distribution Service are not required to be updated.

1. The web service upgrade consists of replacing the files in the RIS Web Service directory with the files supplied in the rRISService folder with this build. Always create a backup of the files being replaced. This upgrade includes 128 files in the rRISService folder and 7 sub folders. Of those folders, 1 is a folder titled **"XSL"** that contains a sub folder and files within the subfolder. Another folder is titled **"deploy"** that contains the new .config files that will be deployed with the user of the file called "ServicesConfigWizard.exe" (see instructions below). Folders ar (Arabic), he (Hebrew), pt_BR (Brazilian Portuguese) and es-AR (Argentina Spanish) are localization folders. The WedgePlugins folder contains various plugin files for RADAR, MIRTH, Ensemble, etc...

Services Configuration Wizard

With the release of 42 to decrease the chance of losing configuration setting and missing new configuration options, we will no longer include the configuration files in the release in the main set of files, but they will now exist in a "deploy" folder, which will contain the three site configurable config files; applicationsettings, connectionstrings, and services as well as a copy of the rRISServices.exe configuration file. The contents of this folder should not be required to be touched.

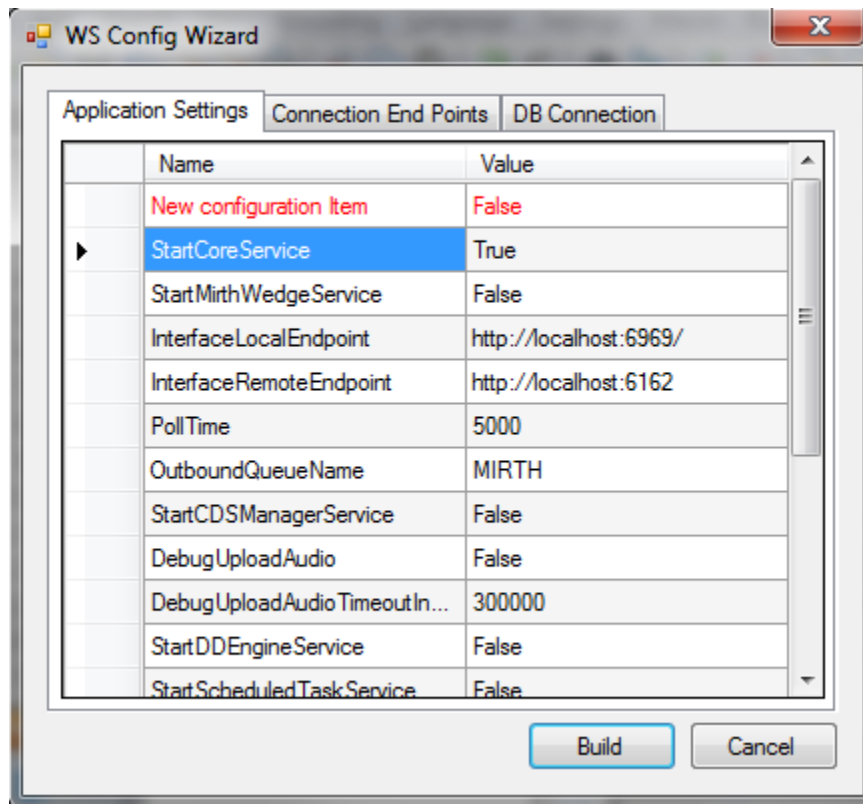
On the install of a new service, all files will be copied to the appropriate locations on the server (no configurations will be over written). If instructed or to confirm no new configurations have been added the user can run the new application "ServicesConfigWizard.exe"

This application will read the existing configuration file(s) (if files exist), and compare to the provided new configuration files then will display three tabs, for each configuration file:

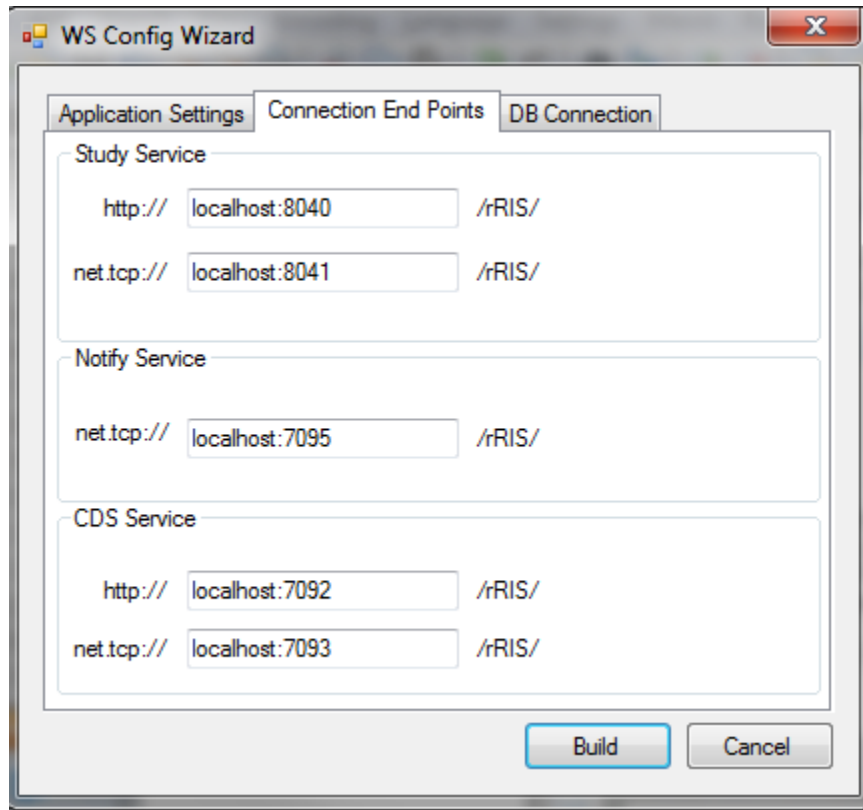
No part of this material may be published, reproduced, stored in a retrieval system, or transmitted

in any form or by any means without the prior written permission from eRAD.

Application Settings: all existing configuration value will be displayed, if there are any new configuration entries they will be displayed in red.



Connection End Points: will display the existing configuration, if the value is left blank then that entry will not be created, in the case of “Study Service” or “CDS Service” if both http and net.tcp were not provided then that endpoint will not be created at all.



DATABASE UPDATES

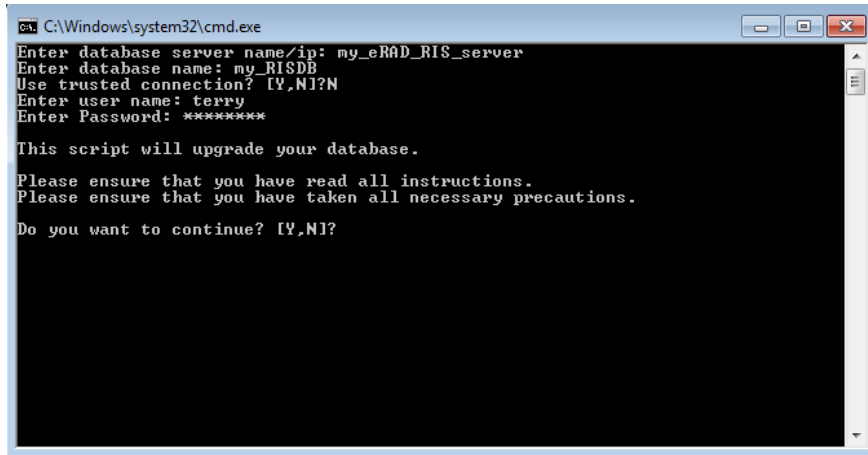
Always run the upgrade scripts in a test environment of the actual database to make sure they run cleanly. If any errors occur please contact development.

Note: There is a new upgrade process introduced with B43.1 called "RunUpgrade.bat". The batch file will open a command window. This process will prompt you for the database server name, database name and authentication credentials. There is no need to run the database upgrade scripts manually as was done in previous releases.

- 1) From the upgrade folder, double click the “RunUpgrade.bat” command file.
- 2) Enter the server name, database name and authentication credentials to the database. You have 2 choices for authentication credentials.

- 3) You can choose to use “Trusted connection”. Using this option will pass the identity of the currently logged on user. If this user has “db_owner” access to the eRAD RIS database then feel free to use this options.
- 4) If you decide not to use “Trusted connection” then you will be prompted for user id and password.

Example:



```
C:\Windows\system32\cmd.exe
Enter database server name/ip: my_eRAD_RIS_server
Enter database name: my_RISDB
Use trusted connection? [Y,N]?N
Enter user name: terry
Enter Password: *****

This script will upgrade your database.
Please ensure that you have read all instructions.
Please ensure that you have taken all necessary precautions.
Do you want to continue? [Y,N]?
```

- 5) After the upgrade program has finished you can find the upgrade logs in the “log” folder. The file name will be eRAD_RIS_db_upgrade_timestamp.log, where timestamp is a value representing the date and time the upgrade started. If you see any errors please contact the development team