

Server Update

For eRAD RIS
Version 2.0
Build 42
Update 42.0.2

Table of Contents

1. Defects Resolved	3
2. Code Stream.....	4
3. Package Contents	5
4. Intended Audience	7
5. Who is affected	7
6. eRAD RIS Release Version Numbers	8
7. Installing	9
8. Known Limitations	10

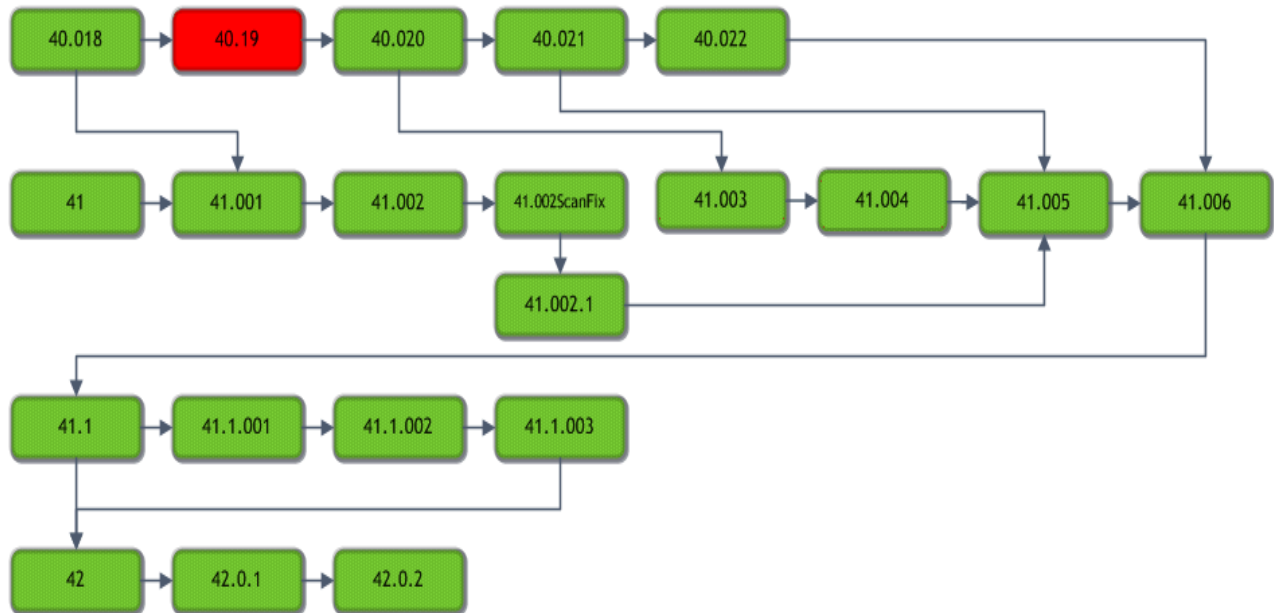
eRAD RIS Server Update

1. Defects Resolved

Redmine #	Subject	Priority
6096	Exception thrown on reschedule of study with illegal XML character in notes field	High
6085	Patient tab - tab order - Cannot tab to Patient Origin fields, stuck in Family History	High
6038	Wedge stopps processing messages (illegal XML)	High
6092	CD Import via patient folder can match with the wrong patient.	Normal
6076	RIS Wedge x64 (stopps processing + spikes CPU when error in c_action_queue)	Normal
6043	mammo follow up reschedule - rescheduling second time - select schedule later creates order and short term followup	Normal
6036	RadNet - error in Radiologist message box	Normal
5987	Scanning - Keep Scanner Connection Open (doesn't work on all scanner models)	Normal
5966	Scanning - Keep Scanner Connection Open is causing scans to fail	Normal

2. Code Stream

eRAD RIS - Source Code Evolution



Legend:

Green = Released software

Red = Will not be released

3. Package Contents

Files included for this server update:

1) GUI ZIP Updates folder contains:

a) rRIS_1.3.42.0.2.21702.zip

2) RIS_Service_Updates contains:

- ABCpdf.dll
- ABCpdf9-32.dll
- ABCpdf9-64.dll
- CDSJobManager.dll
- CDSJobManager.pdb
- CdsLib.dll
- CdsLib.xml
- CdsLib.XmlSerializers.dll
- CommonLib.dll
- CommonLib.pdb
- content.txt
- DDEngine.dll
- DDEngine.pdb
- Interop.ANYMODALCAPTURECTRLLib.dll
- Interop.FAXCOMEXLib.dll
- Microsoft.Practices.EnterpriseLibrary.Caching.dll
- Microsoft.Practices.EnterpriseLibrary.Caching.pdb
- Microsoft.Practices.EnterpriseLibrary.Common.dll
- Microsoft.Practices.EnterpriseLibrary.Common.pdb
- Microsoft.Practices.EnterpriseLibrary.Logging.dll
- Microsoft.Practices.EnterpriseLibrary.Logging.pdb
- Microsoft.Practices.ServiceLocation.dll
- Microsoft.Practices.ServiceLocation.pdb
- Microsoft.Practices.Unity.dll
- Microsoft.Practices.Unity.Interception.dll
- Microsoft.Practices.Unity.Interception.pdb
- Microsoft.Practices.Unity.pdb
- Microsoft.ReportViewer.Common.dll
- Microsoft.ReportViewer.WinForms.dll
- Microsoft.ReportViewer.WinForms.xml
- Newtonsoft.Json.dll
- Newtonsoft.Json.xml
- Ninject.dll
- Ninject.Web.Common.dll
- Ninject.Web.Common.xml
- Ninject.xml
- O2S.Components.PDFRender4NET.dll
- PDFToImages.exe
- rRISServices.exe
- rRISServices.pdb
- rRISServicesx64.exe
- ScheduledTaskManager.dll
- ScheduledTaskManager.pdb
- ServicesConfigWizard.exe
- ServicesConfigWizard.pdb
- SignatureApprovalService.exe
- SignatureApprovalService.pdb
- System.Net.Http.dll
- System.Net.Http.Formatting.dll
- System.Net.Http.Formatting.xml
- System.Net.Http.WebRequest.dll
- System.Net.Http.WebRequest.xml
- System.Net.Http.xml
- System.Web.dll
- System.Web.Helpers.dll

eRAD RIS Server Update

- System.Web.Helpers.xml
- System.Web.Http.dll
- System.Web.Http.SelfHost.dll
- System.Web.Http.SelfHost.xml
- System.Web.Http.WebHost.dll
- System.Web.Http.WebHost.xml
- System.Web.Http.xml
- System.Web.Mvc.dll
- System.Web.Mvc.xml
- System.Web.Optimization.dll
- System.Web.Providers.dll
- System.Web.Razor.dll
- System.Web.Razor.xml
- System.Web.WebPages.Deployment.dll
- System.Web.WebPages.Deployment.xml
- System.Web.WebPages.dll
- System.Web.WebPages.Razor.dll
- System.Web.WebPages.Razor.xml
- System.Web.WebPages.xml
- Tourreau.Gilles.FaxDotNet.dll
- Tourreau.Gilles.FaxDotNet.pdb
- Tourreau.Gilles.FaxDotNet.xml
- WCFService.dll
- WCFService.pdb
- WCFServiceTests.dll
- WCFServiceTests.pdb
- WebApi.dll
- WebApi.pdb
- Wedge.exe
- Wedge.pdb

The rRIS_Service_Updates also contains to subfolders:

- A. Deploy folder contains
 - a. Applicationsettings
 - b. ReleaseVersion-connectionstrings
 - c. rRISServices.exe
 - d. services
- B. XSL subfolder contains:
 - a. Subfolder titled “Stylesheets”
 - i. CCDA Subfolder contains
 - a. sectionImmunizations.xml
 - b. sectionInstructions.xml
 - c. C-CDA.xml
 - d. sectionMedications.xml
 - e. sectionPlanOfCare.xml
 - f. eRadStylesheet.xml
 - g. sectionProblemList.xml
 - h. generalTemplates.xml
 - i. sectionProcedures.xml
 - j. header.xml
 - k. sectionReasonForVisit.xml
 - l. sectionAdministeredMedications.xml
 - m. sectionResults.xml
 - n. sectionAllergies.xml
 - o. sectionSocialHistory.xml
 - p. sectionEncounters.xml
 - q. sectionVitalSigns.xml
 - r. sectionFuncCogStatus.xml
 - ii. CDAToHTMLCompleteReport.xslt
 - iii. CDAToHTMLImpressionSection.xslt
 - iv. CDAToRIS.xslt
 - v. CDAToTxt.xslt
 - vi. DocumentModelReport.xslt
 - vii. DocumentModelReportAsXml.xslt

4. Intended Audience

This document is created by the RIS Development team for the RadNet/eRAD RIS Implementation teams.

5. Who is affected

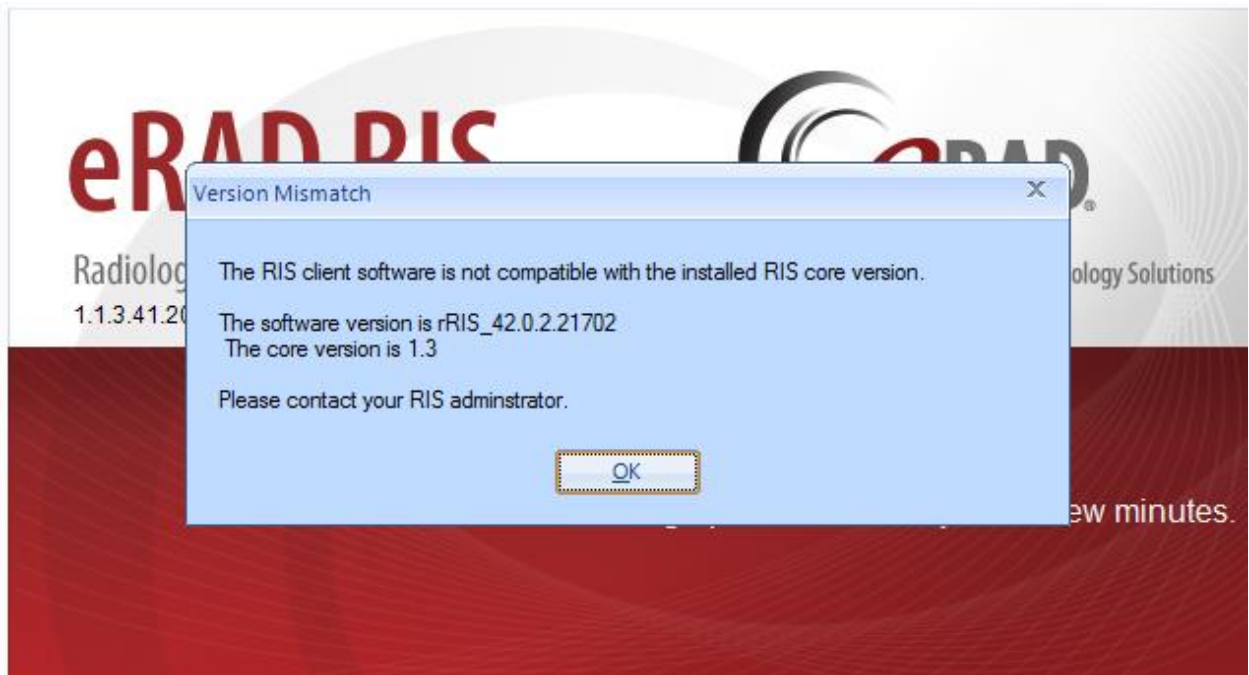
Build 42 installs. Server updates are not cumulative. Any previous server updates must be applied before this one.

6. eRAD RIS Release Version Numbers

Build	Patch	UI Version	Core Version	WS Version	DB Version	Notes
40	17	1.3.40.18780 (3GB)	1.3.40.18756	1.3.40.18756	1.3.40.18646	Core install required for Radiologist User Group. GUI.zip, Core setup, and Web Service updates
40	18	1.3.40.19253(3GB)	1.3.40.18756	1.3.40.18756	1.3.40.19253	GUI.zip, Web Service and database updates
40	19	1.3.40.19909(3GB)	1.3.40.18756	1.3.40.19878	1.3.40.19253	GUI.zip, Web Service
40	20	1.3.40.20086(3GB)	1.3.40.18756	1.3.40.19878	1.3.40.19253	Gui.zip and Recognizer
40	21	1.3.40.20703(3GB)	1.3.40.18756	1.3.40.19878	1.3.40.19253	Gui.zip
40	22	1.3.40.20898(3GB)	1.3.40.18756	1.3.40.19878	1.3.40.19253	Gui.zip
41	-	1.3.41.19135(3GB)	1.3.41.19135	1.3.41.19135	1.3.41.19135	Full version release
41	1	1.3.41.19256(3GB)	1.3.41.19135	1.3.41.19256	1.3.41.19256	GUI.zip, Web Service and database updates
41	2	1.3.41.19620(3GB)	1.3.41.19135	1.3.41.19620	1.3.41.19346	GUI.zip and Web Service
41	2sf	1.3.41.19620SF(3G)	1.3.41.19135	1.3.41.19620	1.3.41.19346	GUI.zip
41	2.1	1.3.41.20622(3GB)	1.3.41.19135	1.3.41.20617	1.3.41.19346	GUI.zip and Web Service
41	3	1.3.41.20125(3GB)	1.3.41.19135	1.3.41.20171	1.3.41.19346	GUI.zip , Web Service and Recognizer
41	4	1.3.41.20285(3GB)	1.3.41.19135	1.3.41.20171	1.3.41.19346	GUI.zip
41	5	1.3.41.20809(3GB)	1.3.41.20708	1.3.41.20792	1.3.41.20738	GUI.zip, Core install, Web Service and database updates
41	6	1.3.41.20912(3GB)	1.3.41.20708	1.3.41.20792	1.3.41.20738	GUI.zip
41.1	-	1.3.41.20918(3GB)	1.3.41.20791	1.3.41.20918	1.3.41.20739	GUI.zip, Core install, Web Service and DB updates, Help files
41.1	1	1.3.41.20987(3GB)	1.3.41.20791	1.3.41.20918	1.3.41.20739	GUI.zip
41.1	2	1.3.41.21162(3GB)	1.3.41.20791	1.3.41.21162	1.3.41.21150	GUI.zip, Web Service and DB updates,
41.1	3	1.3.41.21264(3GB)	1.3.41.20791	1.3.41.21162	1.3.41.21150	GUI.zip
42	-	2.42.0.0.21261(3GB)	2.42.0.0.21261	2.42.0.0.21261	2.42.0.0.21187	Full version release
42	1	2.42.0.1.21597	2.42.0.0.21261	2.42.0.1.21597	2.42.0.0.21187	GUI and Web Service updates
42	2	2.42.0.2.21702	2.42.0.0.21261	2.42.0.2.21702	2.42.0.0.21187	GUI and Web Service updates

7. Installing

- 1) Copy and replace the current rRIS...zip file with the rRIS_1.3.42.0.2.21702.zip file provided with this release.
Be sure to make a backup of the ris.exe.config file contained within the current .zip folder.



If you receive the Version Mismatch error above the GUI.zip will need to be renamed to add 1.3. to it. The GUI.zip file name change is from rRIS_42.0.2.21702 → rRIS_1.3.42.0.2.21702. NOTE: the GUI.zip included with this release has already been renamed to include 1.3.

This is required for installs that have not reached build 42. Because the software installed on your local workstation is a pre-42 build it detects a version mismatch in the software naming and won't allow the newest build to be launched (it is looking for 1.3. in the name). Once the workstation(s) have reached a build of 42 we will no longer need to add "1.3." to the GUI.zip name. Also note that a core install will not resolve this issue below.

NOTE: If your upgrade is coming from 40.016.1 or less a core install will be required.

eRAD RIS Server Update

- 2) Stop each service listed below. Copy the files from the RIS Service Updates folder to the directory for each rRISService. Be sure to make backup of all files, but especially the rRISServices.exe.config and rRISServices.vshost.exe.config files.

rRISService directories include:

- a) *rRISService*
- b) *CDS rRISService*
- c) *Wedge rRISService*
- d) *DDE rRISService*

Restart each service.

8. Known Limitations

Known limitations listed in this document may not have been introduced in 42.0.2, but have been discovered during testing of 42.0.2.

Redmine #	Subject	Info
6105	Exception thrown from Family History grid	The issue occurs when a user tabs into the Family History grid and attempts to enter data into the first field. If the user presses the spacebar first, it will enable the list box in the Relationship column. They can also use the mouse to enable the list. The user can then select from the list or enter value