

Server Update

For eRAD RIS
Version 2.0
Build 42
Update 42.0.9

Table of Contents

1. Defects Resolved	3
2. Code Stream.....	4
3. Package Contents	5
4. Intended Audience	7
5. Who is affected	7
6. eRAD RIS Release Version Numbers	8
7. Installing	9

1. Defects Resolved

Redmine #	Subject	Priority
6209	Reporting - cannot reopen suspended studies (user id case problem)	High
6179	Error when saving "Only the latest interpretation can be modified" after CDS service updates an interpretation	High
4446	Cancelling a locked order causes error	High
6212	Reporting - Next Section Or Field - if you have only one field in the template, it stops checking for sections after reaching field	Normal
3224	Billing constraint violation when open/saving the same order on Tech + Registration	Normal

Change to Configuration

A configuration change to the ris.exe.config file was introduced in build 2.42 this setting was designed to lessen the delays when retrieving lookup tables that are larger in size. This config setting, as mentioned, is located in the ris.exe.config file located in the <appSettings> section of the file

This setting is:

```
<add key="RowLevelCacheDataSetNamesCSV" value="ProcedureCode,TemplateMacro,Indication"/>
```

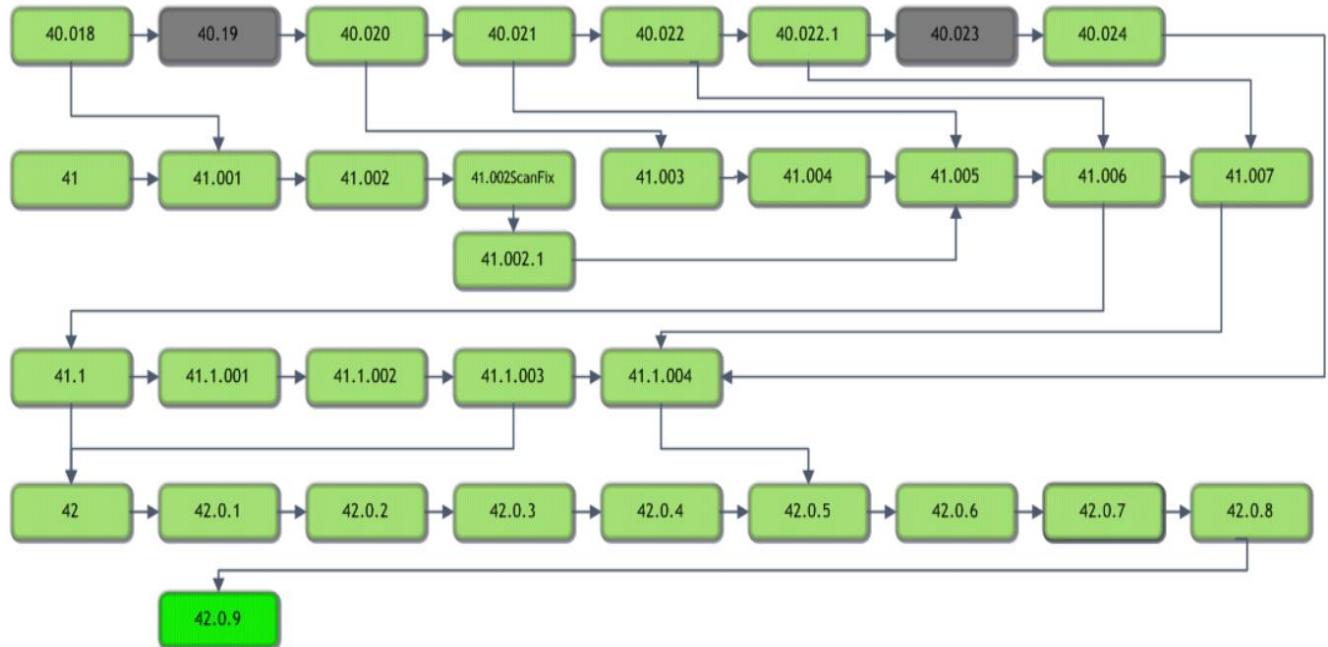
Where the value can be any lookup table, and a value="*", will retrieve all lookups.

The setting has resulted in undesired results of possible slowness, depending on the lookup table, and possibly additional bugs. Because of this, we are requesting that all sites comment out this line in the ris.exe.config table. The commented line will look like

```
<!--<add key="RowLevelCacheDataSetNamesCSV" value="ProcedureCode,TemplateMacro,Indication"/> -->
```

2. Code Stream

eRAD RIS - Source Code Evolution



Legend:

Light Green = Released software

Gray = Will not be released

Bright Green = Current Release

3. Package Contents

Files included for this server update:

1) GUI ZIP Updates folder contains:

- rRIS_1.3.42.0.9.22203.zip

2) RIS_Service_Updates contains:

- ABCpdf.dll
- ABCpdf9-32.dll
- ABCpdf9-64.dll
- CDSJobManager.dll
- CDSJobManager.pdb
- CdsLib.dll
- CdsLib.xml
- CdsLib.XmlSerializers.dll
- CommonLib.dll
- CommonLib.pdb
- contents.txt
- DDEngine.dll
- DDEngine.pdb
- Interop.ANYMODALCAPTURECTRLLib.dll
- Interop.FAXCOMEXLib.dll
- Microsoft.Practices.EnterpriseLibrary.Caching.dll
- Microsoft.Practices.EnterpriseLibrary.Caching.pdb
- Microsoft.Practices.EnterpriseLibrary.Common.dll
- Microsoft.Practices.EnterpriseLibrary.Common.pdb
- Microsoft.Practices.EnterpriseLibrary.Logging.dll
- Microsoft.Practices.EnterpriseLibrary.Logging.pdb
- Microsoft.Practices.ServiceLocation.dll
- Microsoft.Practices.ServiceLocation.pdb
- Microsoft.Practices.Unity.dll
- Microsoft.Practices.Unity.Interception.dll
- Microsoft.Practices.Unity.Interception.pdb
- Microsoft.Practices.Unity.pdb
- Microsoft.ReportViewer.Common.dll
- Microsoft.ReportViewer.WinForms.dll
- Microsoft.ReportViewer.WinForms.xml
- Newtonsoft.Json.dll
- Newtonsoft.Json.xml
- Ninject.dll
- Ninject.Web.Common.dll
- Ninject.Web.Common.xml
- Ninject.xml
- O2S.Components.PDFRender4NET.dll
- PDFToImages.exe
- rRISServices.exe
- rRISServices.pdb
- rRISServicesx64.exe
- ScheduledTaskManager.dll
- ScheduledTaskManager.pdb
- ServicesConfigWizard.exe
- ServicesConfigWizard.pdb
- SignatureApprovalService.exe
- SignatureApprovalService.pdb
- System.Net.Http.dll
- System.Net.Http.Formatting.dll
- System.Net.Http.Formatting.xml
- System.Net.Http.WebRequest.dll
- System.Net.Http.WebRequest.xml
- System.Net.Http.xml
- System.Web.dll
- System.Web.Helpers.dll
- System.Web.Helpers.xml
- System.Web.Http.dll
- System.Web.Http.SelfHost.dll
- System.Web.Http.SelfHost.xml
- System.Web.Http.WebHost.dll
- System.Web.Http.WebHost.xml
- System.Web.Http.xml
- System.Web.Mvc.dll
- System.Web.Mvc.xml
- System.Web.Optimization.dll
- System.Web.Providers.dll
- System.Web.Razor.dll
- System.Web.Razor.xml
- System.Web.WebPages.Deployment.dll
- System.Web.WebPages.Deployment.xml
- System.Web.WebPages.dll
- System.Web.WebPages.Razor.dll
- System.Web.WebPages.Razor.xml
- System.Web.WebPages.xml
- Turreau.Gilles.FaxDotNet.dll
- Turreau.Gilles.FaxDotNet.pdb
- Turreau.Gilles.FaxDotNet.xml
- WCFService.dll
- WCFService.pdb
- WCFServiceTests.dll
- WCFServiceTests.pdb
- WebApi.dll
- WebApi.pdb
- Wedge.exe
- Wedge.pdb

eRAD RIS Server Update

The rRIS_Service_Updates also contains to subfolders:

- A. Deploy folder contains
 - a. Applicationsettings
 - b. ReleaseVersion-connectionstrings
 - c. rRISServices.exe
 - d. services
- B. XSL subfolder contains:
Subfolder titled “Stylesheets” which contains:
 - a. CDAToHTMLCompleteReport.xslt
 - b. CDAToHTMLImpressionSection.xslt
 - c. CDAToRIS.xslt
 - d. CDAToTxt.xslt
 - e. DocumentModelReport.xslt
 - f. DocumentModelReportAsXml.xslt
 - g. CCDA Subfolder contains
 - a. sectionImmunizations.xml
 - b. sectionInstructions.xml
 - c. C-CDA.xml
 - d. sectionMedications.xml
 - e. sectionPlanOfCare.xml
 - f. eRadStylesheet.xml
 - g. sectionProblemList.xml
 - h. generalTemplates.xml
 - i. sectionProcedures.xml
 - j. header.xml
 - k. sectionReasonForVisit.xml
 - l. sectionAdministeredMedications.xml
 - m. sectionResults.xml
 - n. sectionAllergies.xml
 - o. sectionSocialHistory.xml
 - p. sectionEncounters.xml
 - q. sectionVitalSigns.xml
 - r. sectionFuncCogStatus.xml

4. Intended Audience

This document is created by the RIS Development team for the RadNet/eRAD RIS Implementation teams.

5. Who is affected

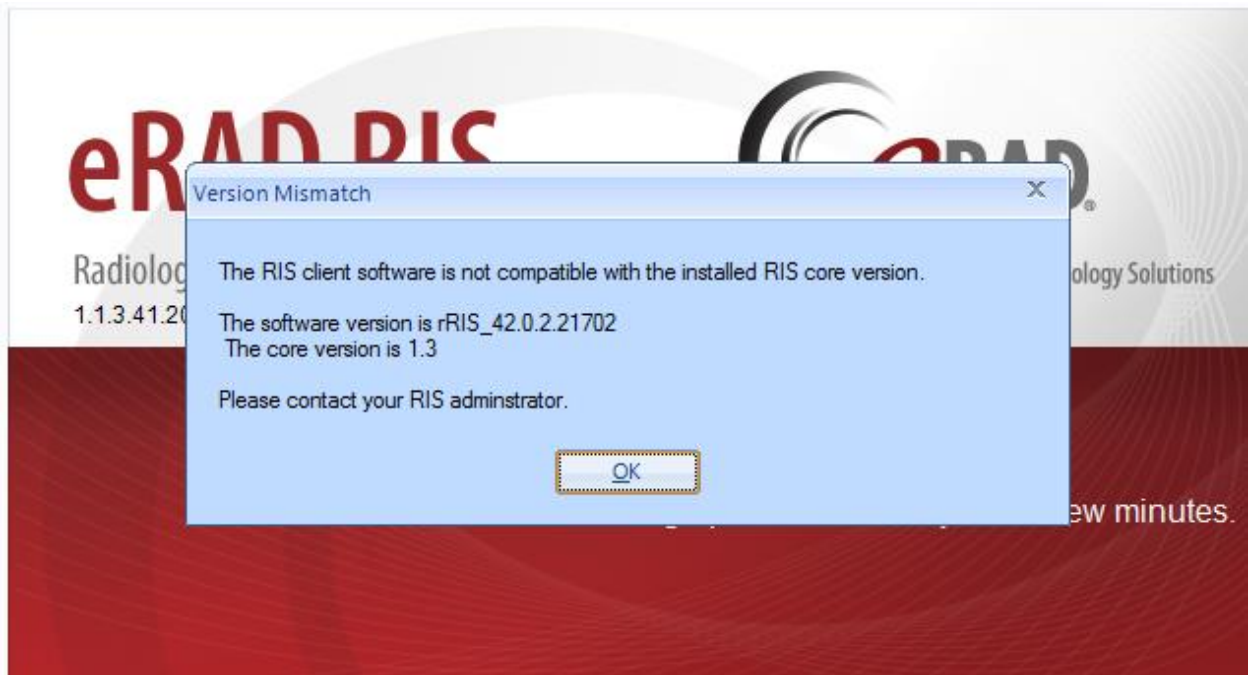
Build 42 installs. Server updates are not cumulative. This server update must be applied to 42.0.4

6. eRAD RIS Release Version Numbers

Build	Patch	UI Version	Core Version	WS Version	DB Version	Notes
40	17	1.3.40.18780 (3GB)	1.3.40.18756	1.3.40.18756	1.3.40.18646	Core install required for Radiologist User Group. GUI.zip, Core setup, and Web Service updates
40	18	1.3.40.19253(3GB)	1.3.40.18756	1.3.40.18756	1.3.40.19253	GUI.zip, Web Service and database updates
40	19	1.3.40.19909(3GB)	1.3.40.18756	1.3.40.19878	1.3.40.19253	GUI.zip, Web Service
40	20	1.3.40.20086(3GB)	1.3.40.18756	1.3.40.19878	1.3.40.19253	Gui.zip and Recognizer
40	21	1.3.40.20703(3GB)	1.3.40.18756	1.3.40.19878	1.3.40.19253	Gui.zip
40	22	1.3.40.20898(3GB)	1.3.40.18756	1.3.40.19878	1.3.40.19253	Gui.zip
41	-	1.3.41.19135(3GB)	1.3.41.19135	1.3.41.19135	1.3.41.19135	Full version release
41	1	1.3.41.19256(3GB)	1.3.41.19135	1.3.41.19256	1.3.41.19256	GUI.zip, Web Service and database updates
41	2	1.3.41.19620(3GB)	1.3.41.19135	1.3.41.19620	1.3.41.19346	GUI.zip and Web Service
41	2sf	1.3.41.19620SF(3G)	1.3.41.19135	1.3.41.19620	1.3.41.19346	GUI.zip
41	2.1	1.3.41.20622(3GB)	1.3.41.19135	1.3.41.20617	1.3.41.19346	GUI.zip and Web Service
41	3	1.3.41.20125(3GB)	1.3.41.19135	1.3.41.20171	1.3.41.19346	GUI.zip , Web Service and Recognizer
41	4	1.3.41.20285(3GB)	1.3.41.19135	1.3.41.20171	1.3.41.19346	GUI.zip
41	5	1.3.41.20809(3GB)	1.3.41.20708	1.3.41.20792	1.3.41.20738	GUI.zip, Core install, Web Service and database updates
41	6	1.3.41.20912(3GB)	1.3.41.20708	1.3.41.20792	1.3.41.20738	GUI.zip
41.1	-	1.3.41.20918(3GB)	1.3.41.20791	1.3.41.20918	1.3.41.20739	GUI.zip, Core install, Web Service and DB updates, Help files
41.1	1	1.3.41.20987(3GB)	1.3.41.20791	1.3.41.20918	1.3.41.20739	GUI.zip
41.1	2	1.3.41.21162(3GB)	1.3.41.20791	1.3.41.21162	1.3.41.21150	GUI.zip, Web Service and DB updates,
41.1	3	1.3.41.21264(3GB)	1.3.41.20791	1.3.41.21162	1.3.41.21150	GUI.zip
42	-	2.42.0.0.21261(3GB)	2.42.0.0.21261	2.42.0.0.21261	2.42.0.0.21187	Full version release
42	1	2.42.0.1.21597	2.42.0.0.21261	2.42.0.1.21597	2.42.0.0.21187	GUI and Web Service updates
42	2	2.42.0.2.21702	2.42.0.0.21261	2.42.0.2.21702	2.42.0.0.21187	GUI and Web Service updates
42	3	2.42.0.2.21806	2.42.0.0.21261	2.42.0.2.21806	2.42.0.0.21187	GUI and Web Service updates
42	4	2.42.0.2.21862	2.42.0.0.21261	2.42.0.2.21806	2.42.0.4.21870	GUI and Database updates
42	5	2.42.0.5.21924	2.42.0.0.21261	2.42.0.2.21806	2.42.0.4.21870	GUI
42	6	2.42.0.5.22009	2.42.0.0.21261	2.42.0.5.22009	2.42.0.4.21870	GUI and Web Service updates
42	7	2.42.0.7.22090	2.42.0.0.21261	2.42.0.6.22009	2.42.0.4.21870	GUI.zip updates
42	8	2.42.0.7.22090	2.42.0.7.22150	2.42.0.6.22009	2.42.0.4.21870	Web Service updates
42	9	2.42.0.9.22203	2.42.0.0.21261	2.42.0.9.22203	2.42.0.4.21870	GUI and Web Service updates

7. Installing

- 1) Copy and replace the current rRIS...zip file with the rRIS_1.3.42.0.9.22203.zip file provided with this release.
Be sure to make a backup of the ris.exe.config file contained within the current .zip folder.



If you receive the Version Mismatch error above the GUI.zip will need to be renamed to add 1.3. to it. The GUI.zip file name change is from rRIS_42.0. 9.22203→ rRIS_1.3.42.0. 9.22203. NOTE: the GUI.zip included with this release has already been renamed to include 1.3.

This is required for installs that have not reached build 42. Because the software installed on your local workstation is a pre-42 build it detects a version mismatch in the software naming and won't allow the newest build to be launched (it is looking for 1.3. in the name). Once the workstation(s) have reached a build of 42 we will no longer need to add "1.3." to the GUI.zip name. Also note that a core install will not resolve this issue below.

NOTE: If your upgrade is coming from 40.016.1 or prior a core install will be required. Versions (builds) of 40.017 and greater do not require a core install as long as you are at least at 40.017 (Core Version 1.3.40.18756)

eRAD RIS Server Update

- 2) Stop each service listed below. Copy the files from the RIS Service Updates folder to the directory for each rRISService. Be sure to make backup of all files, but especially the rRISServices.exe.config and rRISServices.vshost.exe.config files.

rRISService directories include:

- a) *rRISService*
- b) *CDS rRISService*
- c) *Wedge rRISService*
- d) *DDE rRISService*

Restart each service.