

Server Update

For eRAD RIS

Version 3.0













Build 3.2017.6

Update 3.2017.6.10

Table of Contents

Package Contents	3
Intended Audience	3
Who is affected.....	3
New settings	4
ApplicationSetting.config	4
Resolved items	5
Code Stream	7
eRAD RIS Release Version Numbers	8
Installing	9
Client/GUI.....	9
Web Service	9
Database Updates	11

PACKAGE CONTENTS

 _ReleaseNotes	07/16/18 4:46 PM
 DB	07/16/18 4:45 PM
 ExternalWebAPI	07/13/18 1:34 PM
 Identity Service	07/13/18 1:34 PM
 PACS Citrix Bridge	07/13/18 1:35 PM
 PatientConnect	07/13/18 1:37 PM
 Questionnaires	07/13/18 1:34 PM
 ReferringConnect	07/13/18 1:37 PM
 rRISService	07/13/18 1:34 PM
 Service Tools	07/13/18 1:35 PM
 ThickClient	07/13/18 1:34 PM
 UM_Portal	07/13/18 1:34 PM

INTENDED AUDIENCE

The intended audience for this document is the RadNet Clinical Systems team and the eRAD Support/Service team.

It is appropriate to share the document with any customers applying the patch, in order to review new feature descriptions and resolved defects.

WHO IS AFFECTED

Build 2017.6 installs. This server update must be applied to 2017.6.9.

NEW SETTINGS

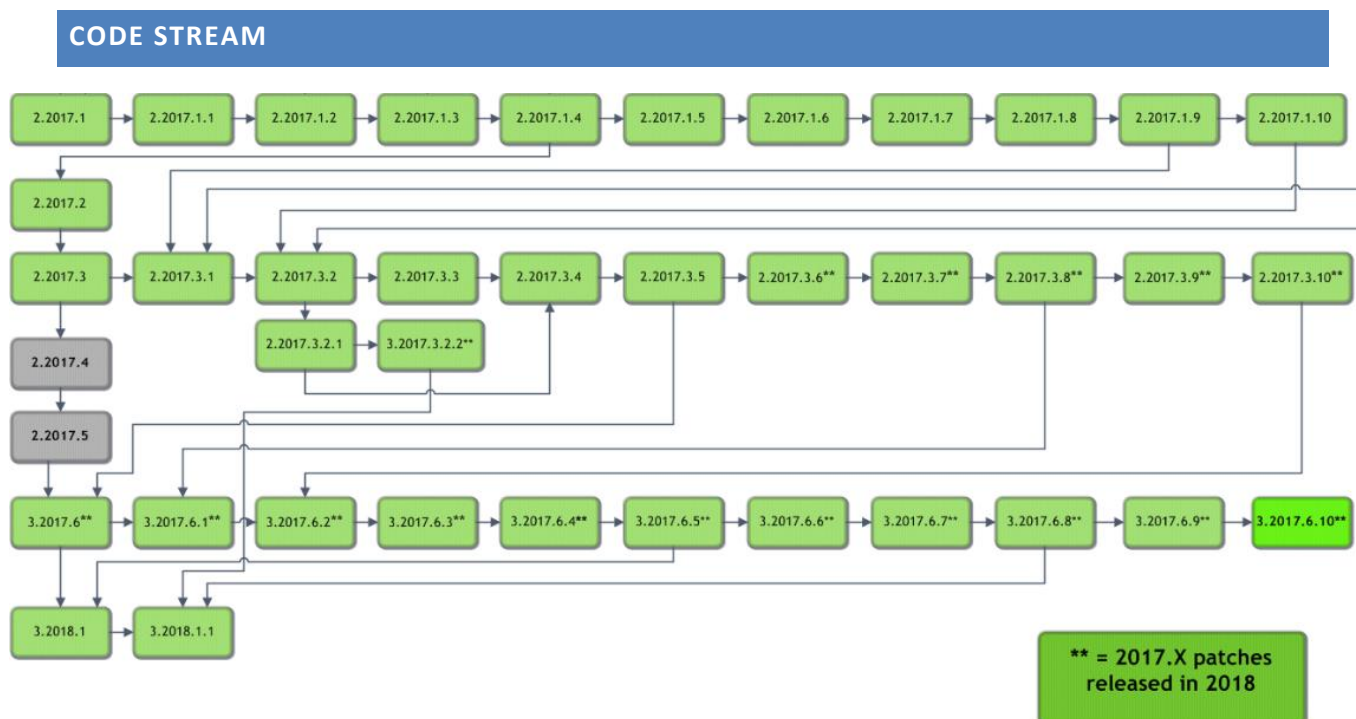
APPLICATIONSETTING.CONFIG

Setting	Default	Purpose
VerbosePrefetchLoggingEnabledUsers	Null (empty)	<p>This setting enables additional information to be logged to the verbose log file for troubleshooting PACS caching.</p> <p>Example of acceptable values:</p> <ul style="list-style-type: none">• comma separated list of users: usera,userb• an asterisk signifying that logging is enabled for all users: *• an empty value to denote no extra logging for any user

RESOLVED ITEMS

Redmine # for 2017.6.8	Subject
21578	The Amount to Collect recorded in the database is now appropriately matching the Amount to Collect displayed in RIS. This resolves an issue that was causing management report information to inaccurately reflect that additional money should have been collected from the patient at the time of service. Management reports should now appropriately reflect an accurate Amount to Collect.
21561	The Reason for Exam field in the Reporting screens now appropriately displays longer entries.
21555	Adjustments were made to appropriately display ImaginePay payment receipts after a change was made to ImaginePay that prevented eRAD from properly rendering the receipt.
21541	The eRAD PACS prefetch call is now using the protocol from the l_pacs_server table.
21508	If the Carrier type code is CAP, the Amount to Collect calculation will include only the co-pay once per day, regardless of Visit Cost. This will allow for the appropriate behavior for capitation studies which do not bring back a Visit Cost. Please note that if one of the billing codes is set to "Allow Amount to Collect with Valid Insurance Flag" equals N (No), the co-pay will not be collected.
21478	Resolved an issue where certain Order-level Alert icons were not displaying properly on worklists. In addition, administrators are now prevented from creating Alerts where the Code contains quotation marks or commas, which can cause display issues.
21471	Resolved an issue with eRAD PACS prefetch which could cause it to stop working after an exception was thrown in a particular user's prefetch thread on the web service. A new Application Configuration setting has been added to troubleshoot caching issues (see description above).
21362	If a message is sent from the Patient or Provider Portal with no text in the body of the message, it will no longer cause an error.
21359	Resolved an issue where the deductible line from the Availity service section was missing under certain conditions ("contract").
21354	Pending Dictation WL: when switching to a custom view that has caching turned off, the worklist will still display the manually cached studies.
21337	RIS upgrade will no longer encounter issues if there is a stuck ris.exe process running.
21269	Resolved an issue where RIS would sometimes request the same lookup table data from the server multiple times in the same second.
21239	Resolved a "specified cast is not valid" error that was caused by a missing null check in the ReviewCopaysOverMultipleOrders method.

21173	Resolved an issue with inappropriate status updates that could occur when manually linking studies for linked reporting. The issue could occur when some studies on the same order were linked and others were not linked. Status updates that need to occur for the studies involved in the link are no longer inappropriately applied to the studies on the order that were not involved in the linked set.
21168	Old billing codes no longer stay active after procedure code change, resolving an issue that previously caused an error stating "Units cannot be less than 0."
21106	Appointment Book custom views can now be saved for modalities (rooms) that contain special characters (such as "/") in their Modality Code.

**Legend:**

Light Green = Previously Released software

Gray = Internal version, non-release version

Bright Green = Current Release

ERAD RIS RELEASE VERSION NUMBERS

Build	Patch	UI Version	Core Version	WS Version	DB Version	Digital Forms	Patient Portal	UM Portal	Provider Portal	Notes
2017.1	-	2.17.1.0 (3GB)	2.17.1.0	2.17.1.0	2.17.1.0.00559886	2.17.1.0	2.17.1.0.572290	2.17.1.0.00000		Full Version Release
2017.1	1	2.17.1.1 (3GB)	2.17.1.0	2.17.1.1	2.17.1.1.00589952	2.17.1.0	2.17.1.0.572290	2.17.1.0.00000		GUI, Web Service and DB updates
2017.1	2	2.17.1.2 (3GB)	2.17.1.0	2.17.1.2	2.17.1.2.00621962	2.17.1.0	2.17.1.0.572290	2.17.1.0.00000		GUI, Web Service and DB updates
2017.1	3	2.17.1.3 (3GB)	2.17.1.0	2.17.1.3	2.17.1.3.00640480	2.17.1.0	2.17.1.0.572290	2.17.1.0.00000		GUI, Web Service and DB updates
2017.1	4	2.17.1.4 (3GB)	2.17.1.0	2.17.1.4	2.17.1.4.00692239	2.17.1.0	2.17.1.4.701924	2.17.1.0.00000		GUI, Web Service, DB and Patient Portal updates
2017.1	5	2.17.1.4 (3GB)	2.17.1.0	2.17.1.5	2.17.1.4.00692239	2.17.1.0	2.17.1.4.701924	2.17.1.0.00000		Web Service
2017.1	6	2.17.1.6 (3GB)	2.17.1.0	2.17.1.5	2.17.1.6.00745281	2.17.1.0	2.17.1.4.701924	2.17.1.0.00000		GUI and DB Updates
2017.1	7	2.17.1.7 (3GB)	2.17.1.0	2.17.1.5	2.17.1.6.00745281	2.17.1.0	2.17.1.4.701924	2.17.1.0.00000		GUI update
2017.1	8	2.17.1.8 (3GB)	2.17.1.0	2.17.1.5	2.17.1.6.00745281	2.17.1.0	2.17.1.4.701924	2.17.1.0.00000		GUI update
2017.1	9	2.17.1.9 (3GB)	2.17.1.0	2.17.1.5	2.17.1.6.00745281	2.17.1.0	2.17.1.4.701924	2.17.1.0.00000		GUI update
2017.1	10	2.17.1.10 (3GB)	2.17.1.0	2.17.1.10	2.17.1.6.00745281	2.17.1.0	2.17.1.4.701924	2.17.1.0.00000		GUI and Web Service update
2017.2	-	2.17.2.0 (3GB)	2.17.2.0	2.17.2.0	2.17.2.0.00695782	2.17.2.0	2.17.2.0.702238	2.17.2.0.702213	2.17.2.0.702226	Full Version Release. First release of Provider Portal
2017.3	-	2.17.3.0 (3GB)	2.17.3.0	2.17.3.0	2.17.3.0.00764112	2.17.3.0	2.17.3.0.321	2.17.3.0.321	2.17.3.0.321	Full Version Release. Including Patient, Provider and UM Portals
2017.3	1	2.17.3.1 (3GB)	2.17.3.0	2.17.3.1	2.17.3.1.00846328	2.17.3.1	2.17.3.1.853299	2.17.3.1.853301	2.17.3.1.856171	GUI, Web Service, DB. Including Patient, Provider and UM Portals
2017.3	2	2.17.3.2 (3GB)	2.17.3.0	2.17.3.2	2.17.3.2.00898348	2.17.3.2	2.17.3.2.913898	2.17.3.2.913899	2.17.3.1.856171	GUI, Web Service, DB. Including Patient, Provider and UM Portals
2017.3	2.1	2.17.3.2.1 (3GB)	2.17.3.0	2.17.3.2	2.17.3.2.00898348	2.17.3.2	2.17.3.2.913898	2.17.3.2.913899	2.17.3.1.856171	GUI Only
2017.3	2.2	2.17.3.2.1 (3GB)	2.17.3.0	2.17.3.2.2	2.17.3.2.00898348	2.17.3.2	2.17.3.2.913898	2.17.3.2.913899	2.17.3.1.856171	Web Services only
2017.3	3	2.17.3.3 (3GB)	2.17.3.0	2.17.3.3	2.17.3.3.00954008	2.17.3.2	2.17.3.3.962869	2.17.3.3.962870	2.17.3.3.962870	GUI, Web Service, DB. Including Patient, Provider and UM Portals
2017.3	4	2.17.3.4 (3GB)	2.17.3.0	2.17.3.4	2.17.3.4.00987562	2.17.3.2	2.17.3.3.962869	2.17.3.3.962870	2.17.3.3.962870	GUI, Web Service and DB
2017.3	5	2.17.3.5 (3GB)	2.17.3.0	2.17.3.5	2.17.3.5.01023250	2.17.3.2	2.17.3.5.1023087	2.17.3.5.1025862	2.17.3.5.1023087	GUI, Web Service, DB, Patient Portal, Referring Portal, UM Portal
2017.3	6	2.17.3.6 (3GB)	2.17.3.0	2.17.3.6	2.17.3.6.01065114	2.17.3.2	2.17.3.5.1023087	2.17.3.5.1025862	2.17.3.5.1023087	GUI, Web Service, DB,
2017.3	7	2.17.3.7 (3GB)	2.17.3.0	2.17.3.6	2.17.3.6.01065114	2.17.3.2	2.17.3.5.1023087	2.17.3.5.1025862	2.17.3.5.1023087	GUI
2017.3	8	2.17.3.8 (3GB)	2.17.3.0	2.17.3.8	2.17.3.6.01065114	2.17.3.2	2.17.3.5.1023087	2.17.3.5.1025862	2.17.3.5.1023087	GUI and Web Service
2017.3	9	2.17.3.8 (3GB)	2.17.3.0	2.17.3.9	2.17.3.6.01065114	2.17.3.2	2.17.3.5.1023087	2.17.3.5.1025862	2.17.3.5.1023087	Web Service
2017.3	10	2.17.3.10 (3GB)	2.17.3.0	2.17.3.10	2.17.3.10.01125764	2.17.3.2	2.17.3.5.1023087	2.17.3.5.1025862	2.17.3.5.1023087	GUI, Web Service and DB updates
2017.6	-	3.17.6.0 (3GB)	3.17.6.0	3.17.6.0	3.17.6.0.01037550	3.17.6.0	3.17.6.0.1037868	3.17.6.0.1037869	3.17.6.0.1037869	Full Version Release. Including Patient, Provider and UM Portals
2017.6	1	3.17.6.1 (3GB)	3.17.6.0	3.17.6.1	3.17.6.1.01094077	3.17.6.0	3.17.6.0.1037868	3.17.6.0.1037869	3.17.6.0.1037869	GUI, Web Service and DB updates
2017.6	2	3.17.6.2 (3GB)	3.17.6.0	3.17.6.2	3.17.6.2.01130171	3.17.6.2	3.17.6.2.1138297	3.17.6.2.1138298	3.17.6.2.1138298	GUI, Web Service, DB, Patient, Provider and UM Portals and Digital Forms
2017.6	3	3.17.6.3 (3GB)	3.17.6.0	3.17.6.3	3.17.6.3.01166033	3.17.6.3	3.17.6.3.1168622	3.17.6.3.1168622	3.17.6.3.1168623	GUI, Web Service, DB, Patient, Provider and UM Portals and Digital Forms
2017.6	4	3.17.6.4 (3GB)	3.17.6.0	3.17.6.4	3.17.6.4.01187509	3.17.6.4	3.17.6.4.1190295	3.17.6.4.1190295	3.17.6.4.1190295	GUI, Web Service, DB, Patient, Provider and UM Portals and Digital Forms
2017.6	5	3.17.6.5 (3GB)	3.17.6.0	3.17.6.5	3.17.6.4.01187509	3.17.6.4	3.17.6.5.1199064	3.17.6.5.1199063	3.17.6.5.1199064	GUI, Web Service, Patient, Provider and UM Portals
2017.6	6	3.17.6.6 (3GB)	3.17.6.0	3.17.6.6	3.17.6.6.01236363	3.17.6.4	3.17.6.5.1199064	3.17.6.5.1199063	3.17.6.5.1199064	GUI, Web Service and DB updates
2017.6	7	3.17.6.7 (3GB)	3.17.6.0	3.17.6.7	3.17.6.7.01257812	3.17.6.7	3.17.6.7.1266287	3.17.6.7.1266287	3.17.6.7.1266287	GUI, Web Service, DB, Digital Forms, Patient, Provider and UM portals
2017.6	8	3.17.6.8 (3GB)	3.17.6.0	3.17.6.8	3.17.6.8.01276873	3.17.6.8	3.17.6.8.1280869	3.17.6.8.1280870	3.17.6.8.1280869	GUI, Web Service, DB, Digital Forms, Patient, Provider and UM portals
2017.6	9	3.17.6.8 (3GB)	3.17.6.0	3.17.6.8	3.17.6.8.01276873	3.17.6.8	3.17.6.9.1308097	3.17.6.9.1308098	3.17.6.9.1308098	Patient, Provider and UM portals
2017.6	10	3.17.6.10 (3GB)	3.17.6.0	3.17.6.10	3.17.6.10.01335594	3.17.6.10	3.17.6.10.1331371	3.17.6.10.1331372	3.17.6.10.1331372	GUI, Web Service, DB, Digital Forms, Patient, Provider and UM portals
2018.1	-	3.18.1.0 (3GB)	3.18.1.0	3.18.1.0	3.18.1.0.01228009	3.18.1.0	3.18.1.0.1229289	3.18.1.0.1229290	3.18.1.0.1229290	Full version release
2018.1	1	3.18.1.1 (3GB)	3.18.1.0	3.18.1.1	3.18.1.1.01288419	3.18.1.1	3.18.1.1.1299765	3.18.1.1.1299766	3.18.1.1.1299765	GUI, Web Service, DB, Digital Forms, Patient, Provider and UM portals

No part of this material may be published, reproduced, stored in a retrieval system, or transmitted

in any form or by any means without the prior written permission from eRAD.

INSTALLING

CLIENT/GUI

Copy and replace the current rRIS...zip file with the eRAD_rRIS_2017.6.10.zip file provided with this release.

Be sure to make a backup of the ris.exe.config file contained within the current .zip folder.

WEB SERVICE

This updated is only required for the Wedge Web Services. The Core RIS Service and Document Distribution Service are not required to be updated.

1. The web service upgrade consists of replacing the files in the RIS Web Service directory with the files supplied in the rRISService folder with this build. Always create a backup of the files being replaced. This upgrade includes 141 files in the rRISService folder and 7 sub folders. Of those folders, 1 is a folder titled “XSL” that contains a sub folder and files within the subfolder. Another folder is titled “**deploy**” that contains the new .config files that will be deployed with the user of the file called “ServicesConfigWizard.exe” (see instructions below). Folders are (Arabic), en_AU (Australian English), en-ZA (South Africa), he (Hebrew), pt_BR (Brazilian Portuguese), es-AR (Argentina Spanish) and ru-RU (Russian) and are localization folders. The WedgePlugins folder contains various plugin files for RADAR, MIRTH, Ensemble, etc...

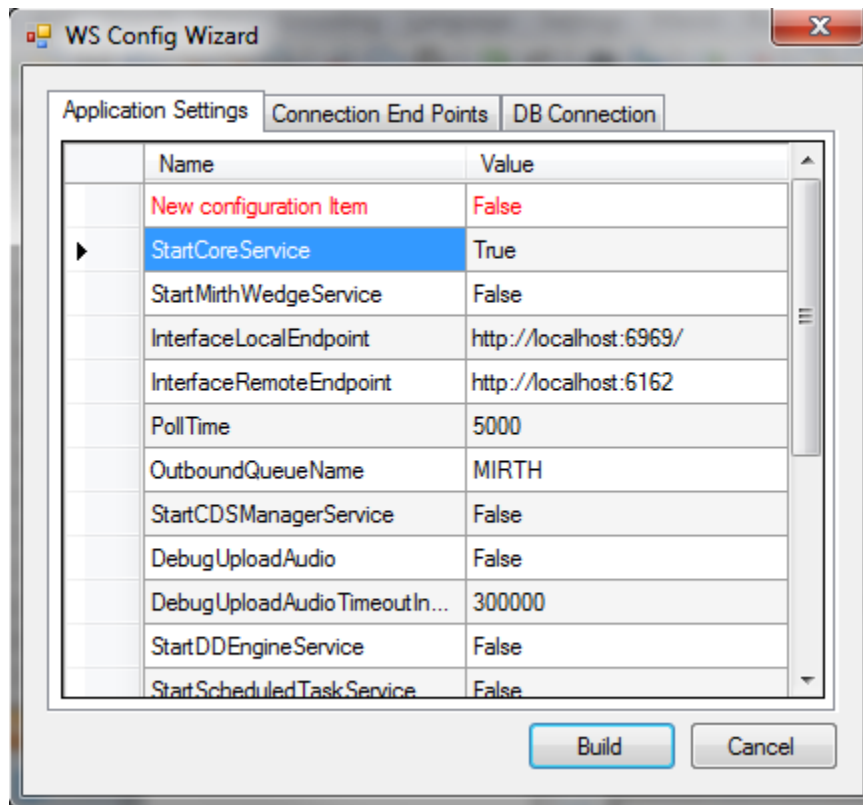
Services Configuration Wizard

With the release of 42 to decrease the chance of losing configuration setting and missing new configuration options, we will no longer include the configuration files in the release in the main set of files, but they will now exist in a “deploy” folder, which will contain the three site configurable config files; applicationsettings, connectionstrings, and services as well as a copy of the rRISServices.exe configuration file. The contents of this folder should not be required to be touched.

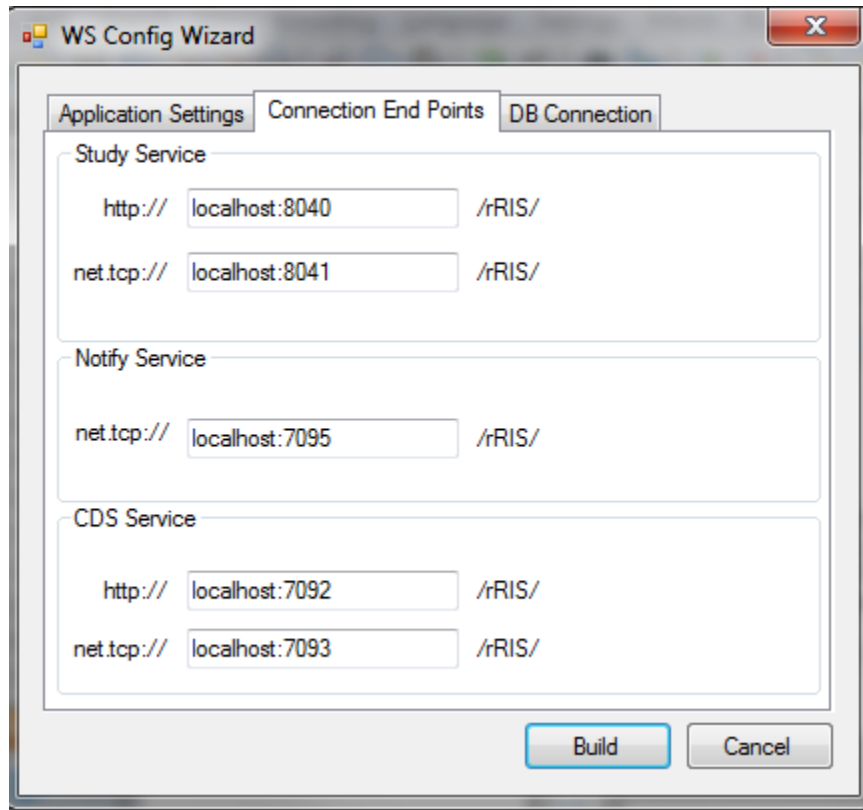
On the install of a new service, all files will be copied to the appropriate locations on the server (no configurations will be over written). If instructed or to confirm no new configurations have been added the user can run the new application “ServicesConfigWizard.exe”

This application will read the existing configuration file(s) (if files exist), and compare to the provided new configuration files then will display three tabs, for each configuration file:

Application Settings: all existing configuration value will be displayed, if there are any new configuration entries they will be displayed in red.



Connection End Points: will display the existing configuration, if the value is left blank then that entry will not be created, in the case of “Study Service” or “CDS Service” if both http and net.tcp were not provided then that endpoint will not be created at all.



DATABASE UPDATES

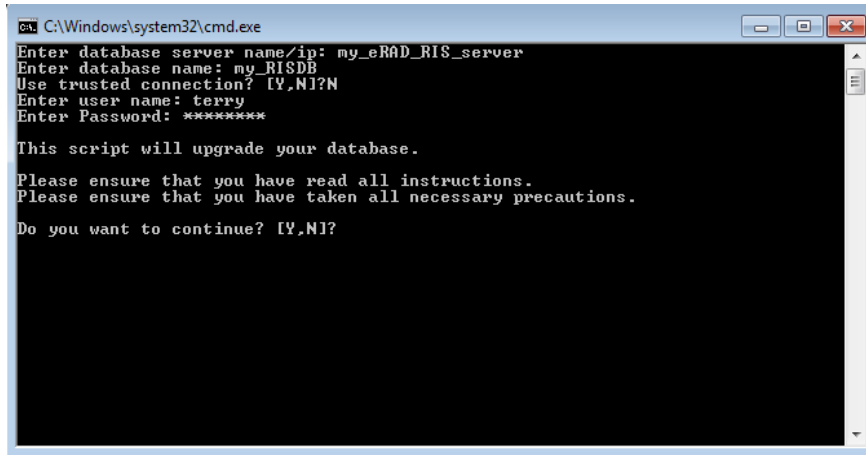
Always run the upgrade scripts in a test environment of the actual database to make sure they run cleanly. If any errors occur please contact development.

Note: There is a new upgrade process introduced with B43.1 called "RunUpgrade.bat". The batch file will open a command window. This process will prompt you for the database server name, database name and authentication credentials. There is no need to run the database upgrade scripts manually as was done in previous releases.

- 1) From the upgrade folder, double click the "RunUpgrade.bat" command file.
- 2) Enter the server name, database name and authentication credentials to the database. You have 2 choices for authentication credentials.

- 3) You can choose to use “Trusted connection”. Using this option will pass the identity of the currently logged on user. If this user has “db_owner” access to the eRAD RIS database then feel free to use this options.
- 4) If you decide not to use “Trusted connection” then you will be prompted for user id and password.

Example:



```
C:\Windows\system32\cmd.exe
Enter database server name/ip: my_eRAD_RIS_server
Enter database name: my_RISDB
Use trusted connection? [Y,N]?N
Enter user name: terry
Enter Password: *****

This script will upgrade your database.
Please ensure that you have read all instructions.
Please ensure that you have taken all necessary precautions.
Do you want to continue? [Y,N]?
```

- 5) After the upgrade program has finished you can find the upgrade logs in the “log” folder. The file name will be eRAD_RIS_db_upgrade_timestamp.log, where timestamp is a value representing the date and time the upgrade started. If you see any errors please contact the development team