

Server Update

For eRAD RIS
Version 2.0
Build 42
Update 42.1.5

Table of Contents

1. Defects Resolved	3
2. Changes to Configuration	4
3. Code Stream.....	5
4. Package Contents	6
5. Intended Audience	8
6. Who is affected	8
7. eRAD RIS Release Version Numbers	9
8. Installing	10

eRAD RIS Server Update

1. Defects Resolved

Redmine #	Subject	Priority
6956	CD Import - PACS Send fails due to compression	High
6921	Reporting - insert report template with automacros will remove the technique section	High
6950	User Preference - "Write Powerscribe 360 XML file when opening a study" and "Drop eRAD RIS study data XML file when opening study" - the xml files are not updated when skipping thru studies.	Normal
6936	Cross site prompt at registration is occurring when the studies as scheduled at different modalites	Normal
6925	Reporting - create template from when the current template has automacros will raise an exception	Normal
6928	Reporting - apply style formatting to automacro inserted text will break create template from	Low

2. Changes to Configuration

The following configuration changes were corrected\included in 42.1.4

We had noticed that there were some settings missing from the standard ris.exe.config file that is supplied with the GUI.zip file. The following settings had been introduced in previous builds, but now reside in the file. Settings starting with <!-- are commented out. These settings are located in the <appsettings> section of the ris.exe.config file. Please do a compare with your current one.

```
<add key="ShouldCloseViewSessionOnThread" value="true"/>
<add key="LookupTableTimeToLiveInMinutes" value="60"/>
<add key="EnableHighPriorityLookupStrategy" value="true"/>
<!--<add key="RowLevelCacheDataSetNamesCSV"
value="ProcedureCode,TemplateMacro,Indication"/> -->
<!-- <add key="MModalDataTransferValue" value="0"/> -->
```

A configuration change to the ris.exe.config file was introduced in build 2.42 this setting was designed to lessen the delays when retrieving lookup tables that are larger in size. This config setting, as mentioned, is located in the ris.exe.config file located in the <appSettings> section of the file

This setting is:

```
<add key="RowLevelCacheDataSetNamesCSV" value="ProcedureCode,TemplateMacro,Indication"/>
```

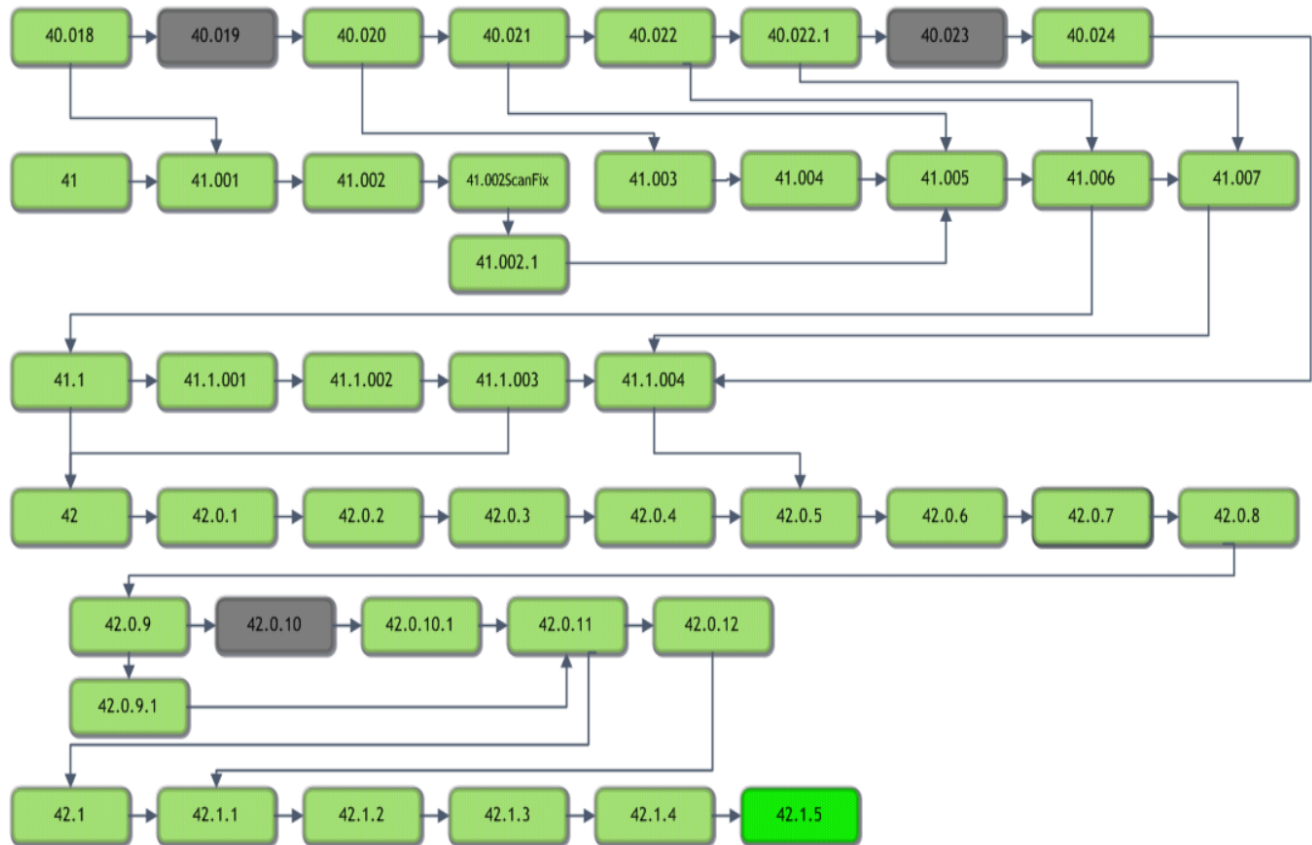
Where the value can be any lookup table, and a value="*", will retrieve all lookups.

The setting has resulted in undesired results of possible slowness, depending on the lookup table, and possibly additional bugs. Because of this, we are requesting that all sites comment out this line in the ris.exe.config table. The commented line will look like

```
<!--<add key="RowLevelCacheDataSetNamesCSV" value="ProcedureCode,TemplateMacro,Indication"/> -->
```

3. Code Stream

eRAD RIS - Source Code Evolution



Legend:

Light Green = Released software

Gray = Will not be released

Bright Green = Current Release

4. Package Contents

Files included for this server update:

1) GUI ZIP Updates folder contains:

- rRIS_1.3.42.1.5.23406.zip

2) RIS_Service_Updates contains:

- ABCpdf.dll
- ABCpdf9-32.dll
- ABCpdf9-64.dll
- CDSJobManager.dll
- CDSJobManager.pdb
- CdsLib.dll
- CdsLib.xml
- CdsLib.XmlSerializers.dll
- CommonLib.dll
- CommonLib.pdb
- DDEngine.dll
- DDEngine.pdb
- Interop.ANYMODALCAPTURECTRLLib.dll
- Interop.FAXCOMEXLib.dll
- Microsoft.Practices.EnterpriseLibrary.Caching.dll
- Microsoft.Practices.EnterpriseLibrary.Caching.pdb
- Microsoft.Practices.EnterpriseLibrary.Common.dll
- Microsoft.Practices.EnterpriseLibrary.Common.pdb
- Microsoft.Practices.EnterpriseLibrary.Logging.dll
- Microsoft.Practices.EnterpriseLibrary.Logging.pdb
- Microsoft.Practices.ServiceLocation.dll
- Microsoft.Practices.ServiceLocation.pdb
- Microsoft.Practices.Unity.dll
- Microsoft.Practices.Unity.Interception.dll
- Microsoft.Practices.Unity.Interception.pdb
- Microsoft.Practices.Unity.pdb
- Microsoft.ReportViewer.Common.dll
- Microsoft.ReportViewer.WinForms.dll
- Microsoft.ReportViewer.WinForms.xml
- Newtonsoft.Json.dll
- Newtonsoft.Json.xml
- Ninject.dll
- Ninject.Web.Common.dll
- Ninject.Web.Common.xml
- Ninject.xml
- O2S.Components.PDFRender4NET.dll
- PDFToImages.exe
- rRISServices.exe
- rRISServices.pdb
- rRISServicesx64.exe
- ScheduledTaskManager.dll
- ScheduledTaskManager.pdb
- ServicesConfigWizard.exe
- ServicesConfigWizard.pdb
- SignatureApprovalService.exe
- SignatureApprovalService.pdb
- System.Net.Http.dll
- System.Net.Http.Formatting.dll
- System.Net.Http.Formatting.xml
- System.Net.Http.WebRequest.dll
- System.Net.Http.WebRequest.xml
- System.Net.Http.xml
- System.Web.dll
- System.Web.Helpers.dll
- System.Web.Helpers.xml
- System.Web.Http.dll
- System.Web.Http.SelfHost.dll
- System.Web.Http.SelfHost.xml
- System.Web.Http.WebHost.dll
- System.Web.Http.WebHost.xml
- System.Web.Http.xml
- System.Web.Mvc.dll
- System.Web.Mvc.xml
- System.Web.Optimization.dll
- System.Web.Providers.dll
- System.Web.Razor.dll
- System.Web.Razor.xml
- System.Web.WebPages.Deployment.dll
- System.Web.WebPages.Deployment.xml
- System.Web.WebPages.dll
- System.Web.WebPages.Razor.dll
- System.Web.WebPages.Razor.xml
- System.Web.WebPages.xml
- Turreau.Gilles.FaxDotNet.dll
- Turreau.Gilles.FaxDotNet.pdb
- Turreau.Gilles.FaxDotNet.xml
- WCFService.dll
- WCFService.pdb
- WCFServiceTests.dll
- WCFServiceTests.pdb
- WebApi.dll
- WebApi.pdb
- Wedge.exe
- Wedge.pdb

eRAD RIS Server Update

The rRIS_Service_Updates also contains to subfolders:

- A. Deploy folder contains
 - a. Applicationsettings
 - b. ReleaseVersion-connectionstrings
 - c. rRISServices.exe
 - d. services
- B. XSL subfolder contains:
Subfolder titled “Stylesheets” which contains:
 - a. CDAToHTMLCompleteReport.xslt
 - b. CDAToHTMLImpressionSection.xslt
 - c. CDAToRIS.xslt
 - d. CDAToTxt.xslt
 - e. DocumentModelReport.xslt
 - f. DocumentModelReportAsXml.xslt
 - g. CCDA Subfolder contains
 - a. C-CDA.xml
 - b. eRadStylesheet.xml
 - c. generalTemplates.xml
 - d. header.xml
 - e. sectionAdministeredMedications.xml
 - f. sectionAllergies.xml
 - g. sectionEncounters.xml
 - h. sectionFuncCogStatus.xml
 - i. sectionImmunizations.xml
 - j. sectionInstructions.xml
 - k. sectionMedications.xml
 - l. sectionPlanOfCare.xml
 - m. sectionProblemList.xml
 - n. sectionProcedures.xml
 - o. sectionReasonForVisit.xml
 - p. sectionResults.xml
 - q. sectionSocialHistory.xml
 - r. sectionVitalSigns.xml

5. Intended Audience

This document is created by the RIS Development team for the RadNet/eRAD RIS Implementation teams.

6. Who is affected

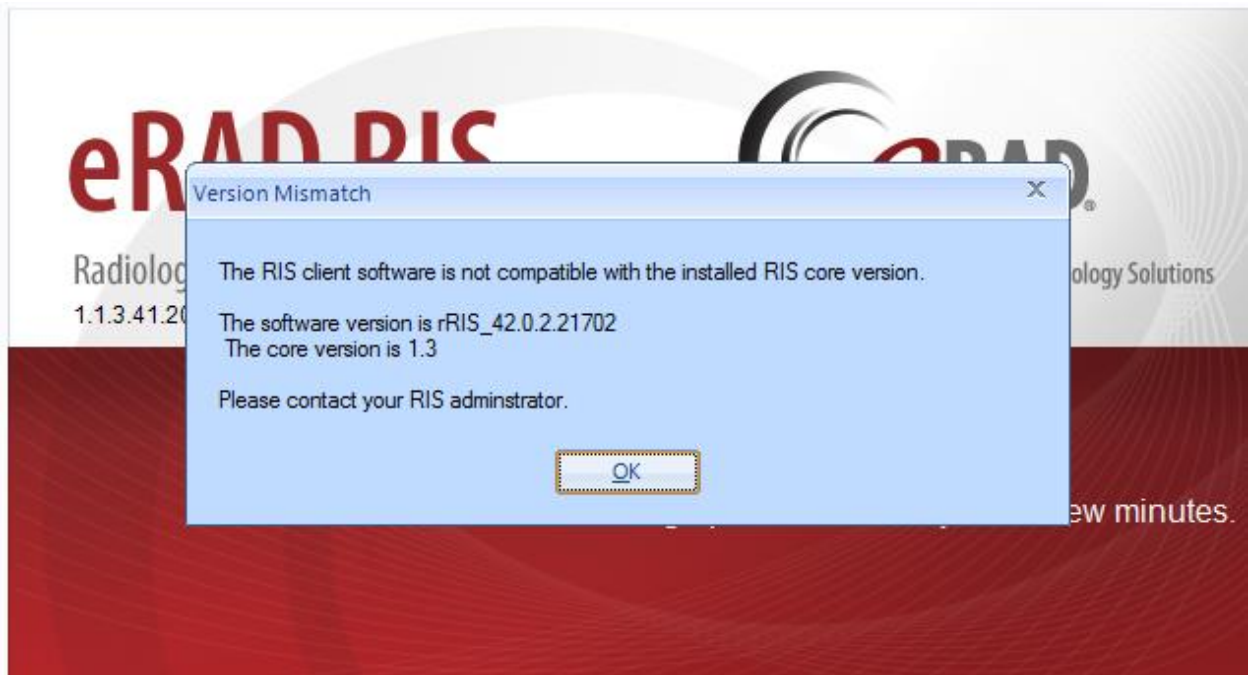
Build 42 installs. Server updates are not cumulative. This server update must be applied to 42.1.2

7. eRAD RIS Release Version Numbers

Build	Patch	UI Version	Core Version	WS Version	DB Version	Notes
41.1	-	1.3.41.20918(3GB)	1.3.41.20791	1.3.41.20918	1.3.41.20739	GUI.zip, Core install, Web Service and DB updates, Help files
41.1	1	1.3.41.20987(3GB)	1.3.41.20791	1.3.41.20918	1.3.41.20739	GUI.zip
41.1	2	1.3.41.21162(3GB)	1.3.41.20791	1.3.41.21162	1.3.41.21150	GUI.zip, Web Service and DB updates,
41.1	3	1.3.41.21264(3GB)	1.3.41.20791	1.3.41.21162	1.3.41.21150	GUI.zip
42	-	2.42.0.0.21261(3GB)	2.42.0.0.21261	2.42.0.0.21261	2.42.0.0.21187	Full version release
42	1	2.42.0.1.21597	2.42.0.0.21261	2.42.0.1.21597	2.42.0.0.21187	GUI and Web Service updates
42	2	2.42.0.2.21702	2.42.0.0.21261	2.42.0.2.21702	2.42.0.0.21187	GUI and Web Service updates
42	3	2.42.0.2.21806	2.42.0.0.21261	2.42.0.2.21806	2.42.0.0.21187	GUI and Web Service updates
42	4	2.42.0.2.21862	2.42.0.0.21261	2.42.0.2.21806	2.42.0.4.21870	GUI and Database updates
42	5	2.42.0.5.21924	2.42.0.0.21261	2.42.0.2.21806	2.42.0.4.21870	GUI
42	6	2.42.0.5.22009	2.42.0.0.21261	2.42.0.5.22009	2.42.0.4.21870	GUI and Web Service updates
42	7	2.42.0.7.22090	2.42.0.0.21261	2.42.0.6.22009	2.42.0.4.21870	GUI.zip updates
42	8	2.42.0.7.22090	2.42.0.7.22150	2.42.0.6.22009	2.42.0.4.21870	Web Service updates
42	9	2.42.0.9.22203	2.42.0.0.21261	2.42.0.9.22203	2.42.0.4.21870	GUI and Web Service updates
42	9.1	2.42.0.9.22203	2.42.0.0.21261	2.42.0.9.22203	2.42.0.4.21870	Web Service updates
42	10	2.42.0.10.22232	2.42.0.0.21261	2.42.0.9.22203	2.42.0.4.21870	GUI.zip
42	10.1	2.42.0.10.22420	2.42.0.0.21261	2.42.0.9.22203	2.42.0.4.21870	GUI.zip updates
42	11	2.42.0.11.22495a	2.42.0.0.21261	2.42.0.11.22471	2.42.0.11.22527	GUI.zip, Web Service, Database updates. Management Report Deployment
42	12	2.42.0.12.22982	2.42.0.0.21261	2.42.0.12.22982	2.42.0.12.22911	GUI.zip, Web Service, Database updates.
42.1	-	2.42.1.0.22744(3GB)	2.42.0.0.21261	2.42.1.0.22744	2.42.1.0.22736	GUI.zip, Web Service, DB updates and Management Report Deployment
42.1	1	2.42.1.1.2296(3GB)	2.42.0.0.21261	2.42.1.1.22963	2.42.1.1.22864	GUI.zip, Web Service, DB updates
42.1	2	2.42.1.2.23007(3GB)	2.42.0.0.21261	2.42.1.2.23007	2.42.1.2.23007	GUI.zip, Web Service, DB updates
42.1	3	2.42.1.2.23237(3GB)	2.42.0.0.21261	2.42.1.2.23237	2.42.1.2.23007	GUI.zip, Web Services
42.1	4	2.42.1.4.23348(3GB)	2.42.0.0.21261	2.42.1.4.23348	2.42.1.2.23007	GUI.zip, Web Services
42.1	5	2.42.1.5.23406(3GB)	2.42.0.0.21261	2.42.1.5.23406	2.42.1.2.23007	GUI.zip, Web Services

8. Installing

- 1) Copy and replace the current rRIS...zip file with the rRIS_1.3.42.1.5.23406.zip file provided with this release.
Be sure to make a backup of the ris.exe.config file contained within the current .zip folder.



If you receive the Version Mismatch error above the GUI.zip will need to be renamed to add 1.3. to it. The GUI.zip file name change is from rRIS_42.1.5.23406→ rRIS_1.3.42.1.5.23406. NOTE: the GUI.zip included with this release has already been renamed to include 1.3.

This is required for installs that have not reached build 42. Because the software installed on your local workstation is a pre-42 build it detects a version mismatch in the software naming and won't allow the newest build to be launched (it is looking for 1.3. in the name). Once the workstation(s) have reached a build of 42 we will no longer need to add "1.3." to the GUI.zip name. Also note that a core install will not resolve this issue below.

NOTE: If your upgrade is coming from 40.016.1 or prior a core install will be required. Versions (builds) of 40.017 and greater do not require a core install as long as you are at least at 40.017 (Core Version 1.3.40.18756)

eRAD RIS Server Update

- 2) Stop each service listed below. Copy the files from the RIS Service Updates folder to the directory for each rRISService. Be sure to make backup of all files, but especially the rRISServices.exe.config and rRISServices.vshost.exe.config files.

rRISService directories include:

- a) *rRISService*
- b) *CDS rRISService*
- c) *Wedge rRISService*
- d) *DDE rRISService*

Restart each service.