



eRAD RIS

RELEASE ANNOUNCEMENT

Build 4.2024.027

UPDATED FEBRUARY 29, 2024

TABLE OF CONTENTS

Summary 2

 Release Announcement2

 New Features2

 Resolved Issues2

Feature Details 3

 Administration.....3

 Feature #24601 – More informative information on Lookup table errors3

Version Details 4

 Code Stream.....4

PUBLICATION HISTORY

Revision	Author	Description
February 29, 2024	Kevin Brooks, Michelle Mahabir / Hilary Saltmarsh	<ul style="list-style-type: none"> Commercial release.

SUMMARY

Release Announcement

This release of ERAD RIS 4.2024.027 provides more detailed information in error dialogs and resolves a variety of errors.

New Features

This release introduces the following features and enhancements:

Category	Redmine #	Subject	Description
Administration	24601	More informative information on Lookup table errors	This enhancement to Administration standardizes the wording in the error dialogs when Lookup table errors occur.

SORTED BY CATEGORY AND REDMINE

Refer to the FEATURE DETAILS section below for configuration and usage information.

Resolved Issues

This release resolves the following issues:

Category	Redmine #	Subject
Insurance Eligibility	33219	Resolved Insurance Eligibility issue which produced an influx of insurance related service calls within the database.
IVT/Precert	30839	Resolved IVT/Precert issue where an error would occur when utilizing the right-click context menu on the Billing Code field.
Lookup Tables	29816	Resolved Lookup Tables issue that did not allow the Skill Set column to be resized in the Personnel Lookup table.
RADAR	30557	Resolved RADAR issue which prevented Quick Messages from being sent via the Appointment Book.
Scanning	16020	Resolved Scanning issue where the incorrect dialog was being displayed when saving an attachment.
Thick Client GUI	31807	Resolved Thick Client GUI issue where attempting to exit the application before saving changes would display unexpected behavior.
Thick Client GUI	33302	This is a service-only change with no customer-facing functionality.

SORTED BY CATEGORY AND REDMINE

Refer to the FEATURE DETAILS section below for more information.

FEATURE DETAILS

Administration

Feature #24601 – More informative information on Lookup table errors

Summary

This enhancement to Administration standardizes the wording in the error dialogs displayed when Lookup table errors occur.

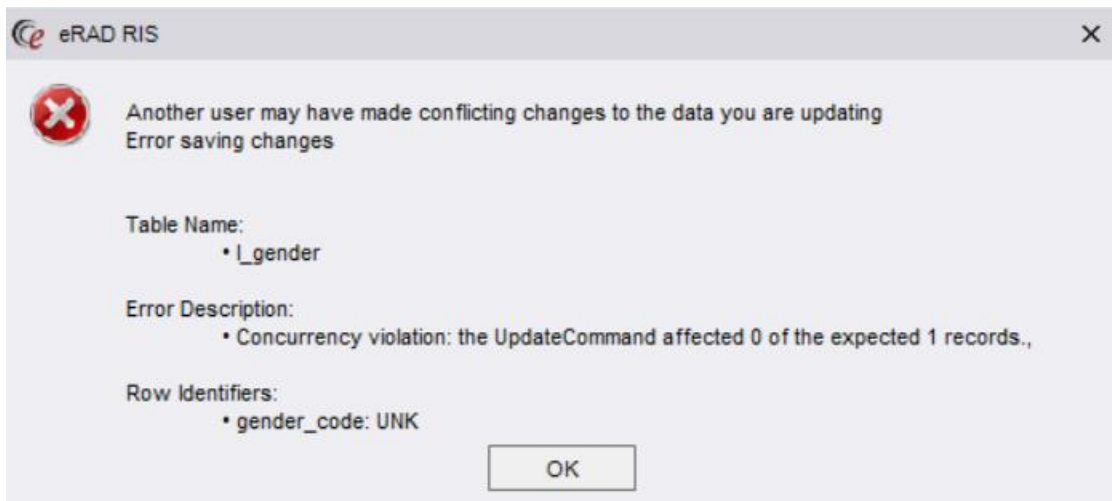
Background

Previously, the information displayed in exception dialogs was vague and did not provide users with enough detail to support troubleshooting the issue.

Feature Description

With these changes, the information displayed in exception dialogs has been standardized for readability and troubleshooting.

Errors related to Lookup table errors now includes pertinent information needed to trace back to the root of the issue. The exception will include a user-friendly statement about the error followed by technical details, such as `Table Name`, `Error Description`, and `Row Identifiers`.



Configuration Instructions

No System Administrator actions are necessary to enable this feature.

VERSION DETAILS

Code Stream

The following source code branches have been merged into this release:

