

# **Server Update**

For eRAD RIS

Version 3.0







Build 3.2017.6

Update 3.2017.6.5

## **Table of Contents**

Package Contents .....	3
Intended Audience .....	3
Who is affected.....	3
Resolved Items .....	4
Code Stream .....	5
eRAD RIS Release Version Numbers .....	6
Installing .....	7
Client/GUI.....	7
Web Service .....	7

## PACKAGE CONTENTS

 _ReleaseNotes	4/12/2018 5:31 PM
 PatientConnect	4/12/2018 4:27 PM
 ReferringConnect	4/12/2018 4:27 PM
 rRISService	4/12/2018 4:26 PM
 ThickClient	4/12/2018 4:26 PM
 UM_Portal	4/12/2018 4:26 PM

## INTENDED AUDIENCE

The intended audience for this document is the RadNet Clinical Systems team and the eRAD Support/Service team.

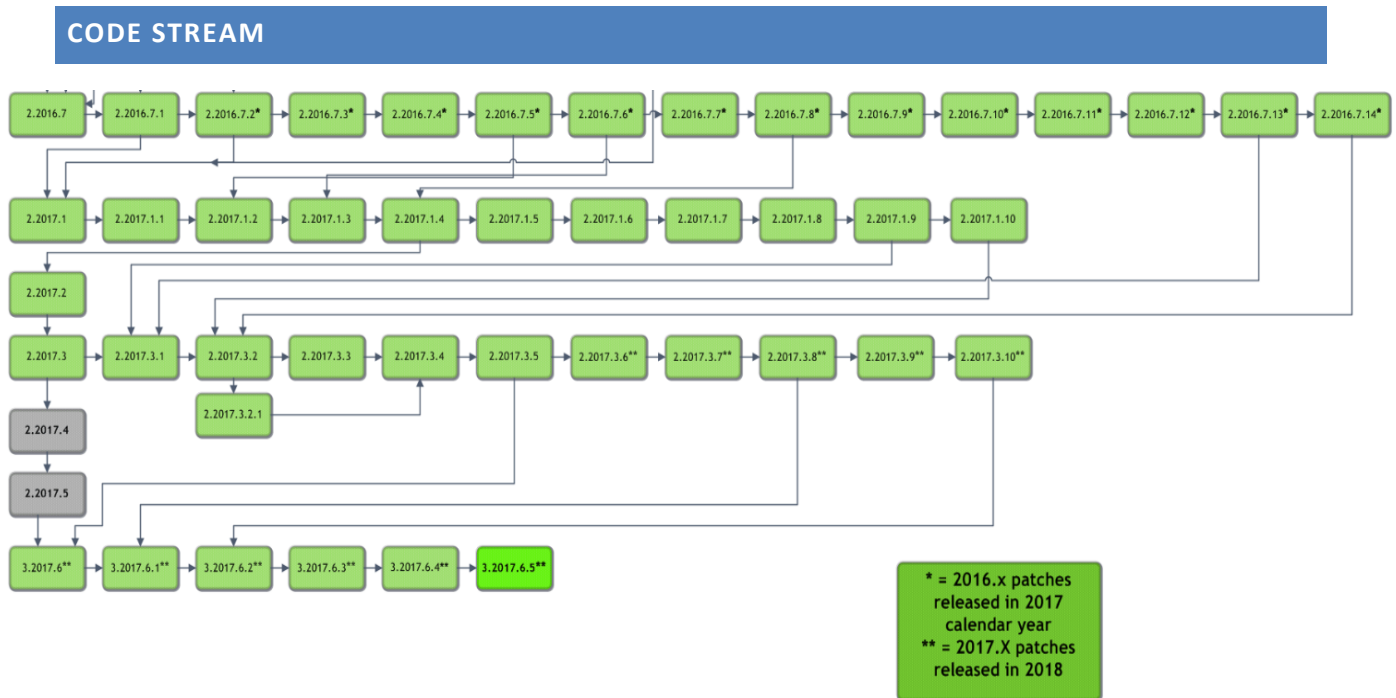
It is appropriate to share the document with any customers applying the patch, in order to review new feature descriptions and resolved defects.

## WHO IS AFFECTED

Build 2017.6 installs. This server update must be applied to 2017.6.4

## RESOLVED ITEMS

Redmine #	Subject
20495	Resolved an Object Reference error that occurred after splitting an Inbound Document and attaching pages to an existing order.
20496	It is now possible to choose laterality for an exam after splitting an appointment into two orders, which caused an error in some earlier builds.
20646	Resolved an issue in the Utilization Management Portal that previously caused a Null Exception error when accessing the Detail page for a study that was rescheduled from a Cancelled study.

**Legend:**

Light Green = Previously Released software

Gray = Internal version, non-release version

Bright Green = Current Release

## ERAD RIS RELEASE VERSION NUMBERS

Build	Patch	UI Version	Core Version	WS Version	DB Version	Digital Forms	Patient Portal	UM Portal	Provider Portal	Notes
2017.1	-	2.17.1.0 (3GB)	2.17.1.0	2.17.1.0	2.17.1.0.00559886	2.17.1.0	2.17.1.0.572290	2.17.1.0.000000		Full Version Release
2017.1	1	2.17.1.1 (3GB)	2.17.1.0	2.17.1.1	2.17.1.1.00589952	2.17.1.0	2.17.1.0.572290	2.17.1.0.000000		GUI, Web Service and DB updates
2017.1	2	2.17.1.2 (3GB)	2.17.1.0	2.17.1.2	2.17.1.2.00621962	2.17.1.0	2.17.1.0.572290	2.17.1.0.000000		GUI, Web Service and DB updates
2017.1	3	2.17.1.3 (3GB)	2.17.1.0	2.17.1.3	2.17.1.3.00640480	2.17.1.0	2.17.1.0.572290	2.17.1.0.000000		GUI, Web Service and DB updates
2017.1	4	2.17.1.4 (3GB)	2.17.1.0	2.17.1.4	2.17.1.4.00692239	2.17.1.0	2.17.1.4.701924	2.17.1.0.000000		GUI, Web Service, DB and Patient Portal updates
2017.1	5	2.17.1.4 (3GB)	2.17.1.0	2.17.1.5	2.17.1.4.00692239	2.17.1.0	2.17.1.4.701924	2.17.1.0.000000		Web Service
2017.1	6	2.17.1.6 (3GB)	2.17.1.0	2.17.1.5	2.17.1.6.00745281	2.17.1.0	2.17.1.4.701924	2.17.1.0.000000		GUI and DB Updates
2017.1	7	2.17.1.7 (3GB)	2.17.1.0	2.17.1.5	2.17.1.6.00745281	2.17.1.0	2.17.1.4.701924	2.17.1.0.000000		GUI update
2017.1	8	2.17.1.8 (3GB)	2.17.1.0	2.17.1.5	2.17.1.6.00745281	2.17.1.0	2.17.1.4.701924	2.17.1.0.000000		GUI update
2017.1	9	2.17.1.9 (3GB)	2.17.1.0	2.17.1.5	2.17.1.6.00745281	2.17.1.0	2.17.1.4.701924	2.17.1.0.000000		GUI update
2017.1	10	2.17.1.10 (3GB)	2.17.1.0	2.17.1.10	2.17.1.6.00745281	2.17.1.0	2.17.1.4.701924	2.17.1.0.000000		GUI and Web Service update
2017.2	-	2.17.2.0 (3GB)	2.17.2.0	2.17.2.0	2.17.2.0.00695782	2.17.2.0	2.17.2.0.702238	2.17.2.0.702213	2.17.2.0.702226	Full Version Release. First release of Provider Portal
2017.3	-	2.17.3.0 (3GB)	2.17.3.0	2.17.3.0	2.17.3.0.00764112	2.17.3.0	2.17.3.0.321	2.17.3.0.321	2.17.3.0.321	Full Version Release. Including Patient, Provider and UM Portals
2017.3	1	2.17.3.1 (3GB)	2.17.3.0	2.17.3.1	2.17.3.1.00846328	2.17.3.1	2.17.3.1.853299	2.17.3.1.853301	2.17.3.1.856171	GUI, Web Service, DB. Including Patient, Provider and UM Portals
2017.3	2	2.17.3.2 (3GB)	2.17.3.0	2.17.3.2	2.17.3.2.00898348	2.17.3.2	2.17.3.2.913898	2.17.3.2.913899	2.17.3.1.856171	GUI, Web Service, DB. Including Patient, Provider and UM Portals
2017.3	2.1	2.17.3.2.1 (3GB)	2.17.3.0	2.17.3.2	2.17.3.2.00898348	2.17.3.2	2.17.3.2.913898	2.17.3.2.913899	2.17.3.1.856171	GUI Only
2017.3	3	2.17.3.3 (3GB)	2.17.3.0	2.17.3.3	2.17.3.3.00954008	2.17.3.2	2.17.3.3.962869	2.17.3.3.962870	2.17.3.3.962870	GUI, Web Service, DB. Including Patient, Provider and UM Portals
2017.3	4	2.17.3.4 (3GB)	2.17.3.0	2.17.3.4	2.17.3.4.00987562	2.17.3.2	2.17.3.3.962869	2.17.3.3.962870	2.17.3.3.962870	GUI, Web Service and DB
2017.3	5	2.17.3.5 (3GB)	2.17.3.0	2.17.3.5	2.17.3.5.01023250	2.17.3.2	2.17.3.5.1023087	2.17.3.5.1025862	2.17.3.5.1023087	GUI, Web Service, DB, Patient Portal, Referring Portal, UM Portal
2017.3	6	2.17.3.6 (3GB)	2.17.3.0	2.17.3.6	2.17.3.6.01065114	2.17.3.2	2.17.3.5.1023087	2.17.3.5.1025862	2.17.3.5.1023087	GUI, Web Service, DB,
2017.3	7	2.17.3.7 (3GB)	2.17.3.0	2.17.3.6	2.17.3.6.01065114	2.17.3.2	2.17.3.5.1023087	2.17.3.5.1025862	2.17.3.5.1023087	GUI
2017.3	8	2.17.3.8 (3GB)	2.17.3.0	2.17.3.8	2.17.3.6.01065114	2.17.3.2	2.17.3.5.1023087	2.17.3.5.1025862	2.17.3.5.1023087	GUI and Web Service
2017.3	9	2.17.3.8 (3GB)	2.17.3.0	2.17.3.9	2.17.3.6.01065114	2.17.3.2	2.17.3.5.1023087	2.17.3.5.1025862	2.17.3.5.1023087	Web Service
2017.3	10	2.17.3.10 (3GB)	2.17.3.0	2.17.3.10	2.17.3.10.01125764	2.17.3.2	2.17.3.5.1023087	2.17.3.5.1025862	2.17.3.5.1023087	GUI, Web Service and DB updates
2017.6	-	3.17.6.0 (3GB)	3.17.6.0	3.17.6.0	3.17.6.0.01037550	3.17.6.0	3.17.6.0.1037868	3.17.6.0.1037869	3.17.6.0.1037869	Full Version Release. Including Patient, Provider and UM Portals
2017.6	1	3.17.6.1 (3GB)	3.17.6.0	3.17.6.1	3.17.6.1.01094077	3.17.6.0	3.17.6.0.1037868	3.17.6.0.1037869	3.17.6.0.1037869	GUI, Web Service and DB updates
2017.6	2	3.17.6.2 (3GB)	3.17.6.0	3.17.6.2	3.17.6.2.01130171	3.17.6.2	3.17.6.2.1138297	3.17.6.2.1138298	3.17.6.2.1138298	GUI, Web Service, DB, Patient, Provider and UM Portals and Digital Forms
2017.6	3	3.17.6.3 (3GB)	3.17.6.0	3.17.6.3	3.17.6.3.01166033	3.17.6.3	3.17.6.3.1168622	3.17.6.3.1168622	3.17.6.3.1168623	GUI, Web Service, DB, Patient, Provider and UM Portals and Digital Forms
2017.6	4	3.17.6.4 (3GB)	3.17.6.0	3.17.6.4	3.17.6.4.01187509	3.17.6.4	3.17.6.4.1190295	3.17.6.4.1190295	3.17.6.4.1190295	GUI, Web Service, DB, Patient, Provider and UM Portals and Digital Forms
2017.6	5	3.17.6.5 (3GB)	3.17.6.0	3.17.6.5	3.17.6.4.01187509	3.17.6.4	3.17.6.5.1199064	3.17.6.5.1199063	3.17.6.5.1199064	GUI, Web Service, Patient, Provider and UM Portals

## INSTALLING

### CLIENT/GUI

Copy and replace the current rRIS...zip file with the eRAD\_rRIS\_2017.6.5.zip file provided with this release.

Be sure to make a backup of the ris.exe.config file contained within the current .zip folder.

### WEB SERVICE

This updated is only required for the Wedge Web Services. The Core RIS Service and Document Distribution Service are not required to be updated.

1. The web service upgrade consists of replacing the files in the RIS Web Service directory with the files supplied in the rRISService folder with this build. Always create a backup of the files being replaced. This upgrade includes 141 files in the rRISService folder and 7 sub folders. Of those folders, 1 is a folder titled **"XSL"** that contains a sub folder and files within the subfolder. Another folder is titled **"deploy"** that contains the new .config files that will be deployed with the user of the file called "ServicesConfigWizard.exe" (see instructions below). Folders are (Arabic), en\_AU (Australian English), en-ZA (South Africa), he (Hebrew), pt\_BR (Brazilian Portuguese), es-AR (Argentina Spanish) and ru-RU (Russian) and are localization folders. The WedgePlugins folder contains various plugin files for RADAR, MIRTH, Ensemble, etc...

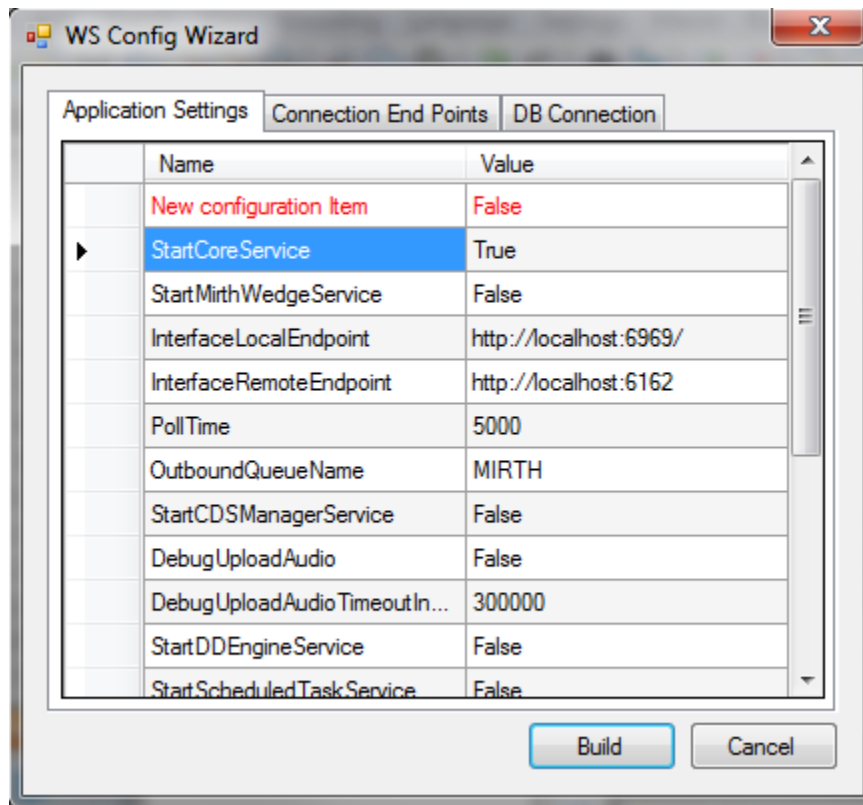
#### Services Configuration Wizard

With the release of 42 to decrease the chance of losing configuration setting and missing new configuration options, we will no longer include the configuration files in the release in the main set of files, but they will now exist in a "deploy" folder, which will contain the three site configurable config files; applicationsettings, connectionstrings, and services as well as a copy of the rRISServices.exe configuration file. The contents of this folder should not be required to be touched.

On the install of a new service, all files will be copied to the appropriate locations on the server (no configurations will be over written). If instructed or to confirm no new configurations have been added the user can run the new application "ServicesConfigWizard.exe"

This application will read the existing configuration file(s) (if files exist), and compare to the provided new configuration files then will display three tabs, for each configuration file:

**Application Settings:** all existing configuration value will be displayed, if there are any new configuration entries they will be displayed in red.





**Connection End Points:** will display the existing configuration, if the value is left blank then that entry will not be created, in the case of “Study Service” or “CDS Service” if both http and net.tcp were not provided then that endpoint will not be created at all.

WS Config Wizard

Application Settings | **Connection End Points** | DB Connection

**Study Service**

http:// localhost:8040 /rRIS/

net.tcp:// localhost:8041 /rRIS/

**Notify Service**

net.tcp:// localhost:7095 /rRIS/

**CDS Service**

http:// localhost:7092 /rRIS/

net.tcp:// localhost:7093 /rRIS/

Build Cancel