

# Server Update

For eRAD RIS  
Version 2.0  
Build 42  
Update 42.1.3

## **Table of Contents**

|   |    |
|---|----|
| 1. Defects Resolved .....                 | 3  |
| 2. Changes to Configuration .....         | 4  |
| 3. Code Stream.....                       | 5  |
| 4. Package Contents .....                 | 6  |
| 5. Intended Audience .....                | 8  |
| 6. Who is affected .....                  | 8  |
| 7. eRAD RIS Release Version Numbers ..... | 9  |
| 8. Installing .....                       | 10 |

## **eRAD RIS Server Update**

### **1. Defects Resolved**

| Redmine # | Subject   | Priority |
|-----------|---|----------|
| 6631      | Referring physician "visited at" drop down list contains only numbers, not human readable addresses | High     |
| 6182      | Multple scanned images do not get sent to PACS  | High     |
| 6758      | Discontinued Transaction does not include extended tables in CLOB                                   | Normal   |

### **2. Changes to Configuration**

A configuration change to the ris.exe.config file was introduced in build 2.42 this setting was designed to lessen the delays when retrieving lookup tables that are larger in size.

This config setting, as mentioned, is located in the ris.exe.config file located in the <appSettings> section of the file

This setting is:

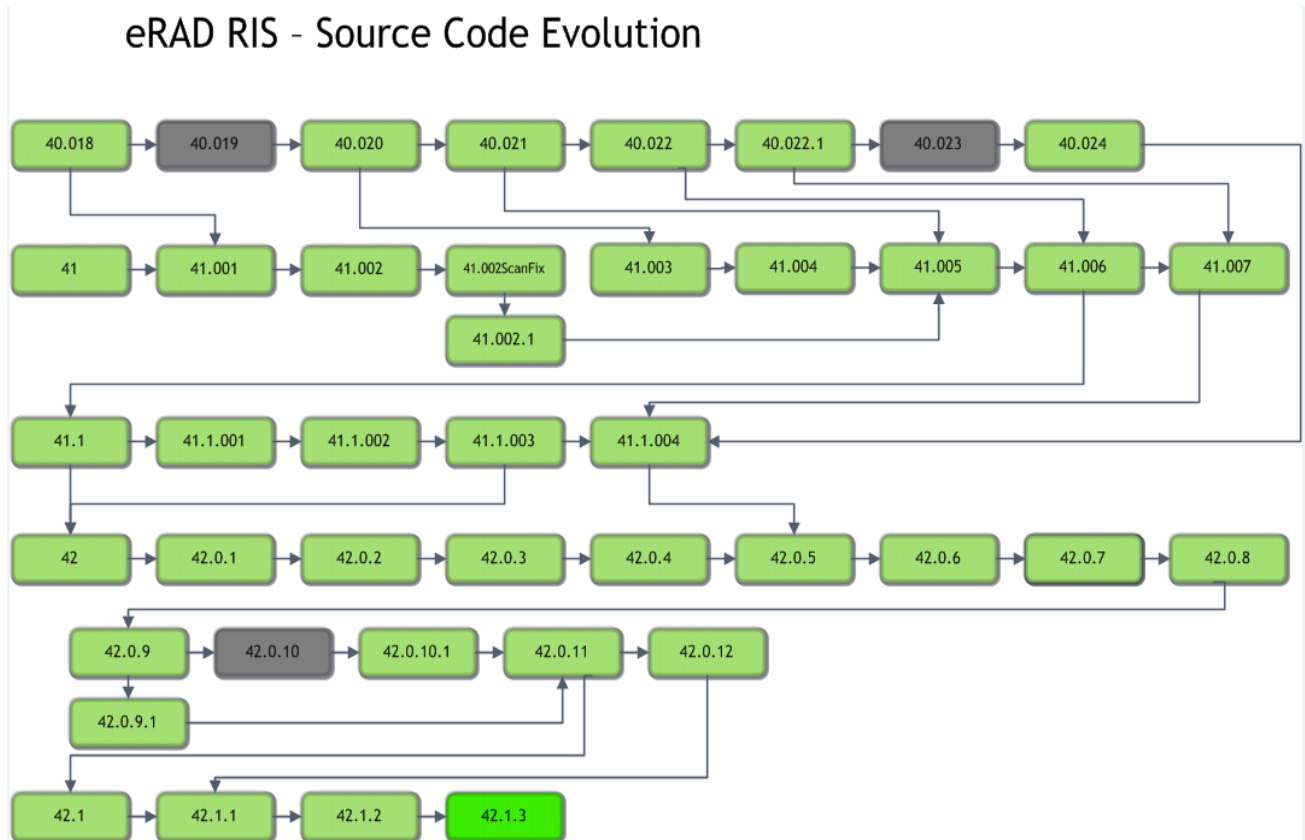
```
<add key="RowLevelCacheDataSetNamesCSV" value="ProcedureCode,TemplateMacro,Indication"/>
```

Where the value can be any lookup table, and a value="\*", will retrieve all lookups.

The setting has resulted in undesired results of possible slowness, depending on the lookup table, and possibly additional bugs. Because of this, we are requesting that all sites comment out this line in the ris.exe.config table. The commented line will look like

```
<!--<add key="RowLevelCacheDataSetNamesCSV" value="ProcedureCode,TemplateMacro,Indication"/> -->
```

### 3. Code Stream



#### **Legend:**

Light Green = Released software

Gray = Will not be released

Bright Green = Current Release

### **4. Package Contents**

Files included for this server update:

1) GUI ZIP Updates folder contains:

- rRIS\_1.3.42.1.2.23237.zip

2) RIS\_Service\_Updates contains:

- ABCpdf.dll
- ABCpdf9-32.dll
- ABCpdf9-64.dll
- CDSJobManager.dll
- CDSJobManager.pdb
- CdsLib.dll
- CdsLib.xml
- CdsLib.XmlSerializers.dll
- CommonLib.dll
- CommonLib.pdb
- DDEngine.dll
- DDEngine.pdb
- Interop.ANYMODALCAPTURECTRLLib.dll
- Interop.FAXCOMEXLib.dll
- Microsoft.Practices.EnterpriseLibrary.Caching.dll
- Microsoft.Practices.EnterpriseLibrary.Caching.pdb
- Microsoft.Practices.EnterpriseLibrary.Common.dll
- Microsoft.Practices.EnterpriseLibrary.Common.pdb
- Microsoft.Practices.EnterpriseLibrary.Logging.dll
- Microsoft.Practices.EnterpriseLibrary.Logging.pdb
- Microsoft.Practices.ServiceLocation.dll
- Microsoft.Practices.ServiceLocation.pdb
- Microsoft.Practices.Unity.dll
- Microsoft.Practices.Unity.Interception.dll
- Microsoft.Practices.Unity.Interception.pdb
- Microsoft.Practices.Unity.pdb
- Microsoft.ReportViewer.Common.dll
- Microsoft.ReportViewer.WinForms.dll
- Microsoft.ReportViewer.WinForms.xml
- Newtonsoft.Json.dll
- Newtonsoft.Json.xml
- Ninject.dll
- Ninject.Web.Common.dll
- Ninject.Web.Common.xml
- Ninject.xml
- O2S.Components.PDFRender4NET.dll
- PDFToImages.exe
- rRISServices.exe
- rRISServices.pdb
- rRISServicesx64.exe
- ScheduledTaskManager.dll
- ScheduledTaskManager.pdb
- ServicesConfigWizard.exe
- ServicesConfigWizard.pdb
- SignatureApprovalService.exe
- SignatureApprovalService.pdb
- System.Net.Http.dll
- System.Net.Http.Formatting.dll
- System.Net.Http.Formatting.xml
- System.Net.Http.WebRequest.dll
- System.Net.Http.WebRequest.xml
- System.Net.Http.xml
- System.Web.dll
- System.Web.Helpers.dll
- System.Web.Helpers.xml
- System.Web.Http.dll
- System.Web.Http.SelfHost.dll
- System.Web.Http.SelfHost.xml
- System.Web.Http.WebHost.dll
- System.Web.Http.WebHost.xml
- System.Web.Http.xml
- System.Web.Mvc.dll
- System.Web.Mvc.xml
- System.Web.Optimization.dll
- System.Web.Providers.dll
- System.Web.Razor.dll
- System.Web.Razor.xml
- System.Web.WebPages.Deployment.dll
- System.Web.WebPages.Deployment.xml
- System.Web.WebPages.dll
- System.Web.WebPages.Razor.dll
- System.Web.WebPages.Razor.xml
- System.Web.WebPages.xml
- Turreau.Gilles.FaxDotNet.dll
- Turreau.Gilles.FaxDotNet.pdb
- Turreau.Gilles.FaxDotNet.xml
- WCFService.dll
- WCFService.pdb
- WCFServiceTests.dll
- WCFServiceTests.pdb
- WebApi.dll
- WebApi.pdb
- Wedge.exe
- Wedge.pdb

## **eRAD RIS Server Update**

The rRIS\_Service\_Updates also contains to subfolders:

- A. Deploy folder contains
  - a. Applicationsettings
  - b. ReleaseVersion-connectionstrings
  - c. rRISServices.exe
  - d. services
- B. XSL subfolder contains:  
Subfolder titled “Stylesheets” which contains:
  - a. CDAToHTMLCompleteReport.xslt
  - b. CDAToHTMLImpressionSection.xslt
  - c. CDAToRIS.xslt
  - d. CDAToTxt.xslt
  - e. DocumentModelReport.xslt
  - f. DocumentModelReportAsXml.xslt
  - g. CCDA Subfolder contains
    - a. C-CDA.xml
    - b. eRadStylesheet.xml
    - c. generalTemplates.xml
    - d. header.xml
    - e. sectionAdministeredMedications.xml
    - f. sectionAllergies.xml
    - g. sectionEncounters.xml
    - h. sectionFuncCogStatus.xml
    - i. sectionImmunizations.xml
    - j. sectionInstructions.xml
    - k. sectionMedications.xml
    - l. sectionPlanOfCare.xml
    - m. sectionProblemList.xml
    - n. sectionProcedures.xml
    - o. sectionReasonForVisit.xml
    - p. sectionResults.xml
    - q. sectionSocialHistory.xml
    - r. sectionVitalSigns.xml

### **5. Intended Audience**

This document is created by the RIS Development team for the RadNet/eRAD RIS Implementation teams.

### **6. Who is affected**

Build 42 installs. Server updates are not cumulative. This server update must be applied to 42.1.2

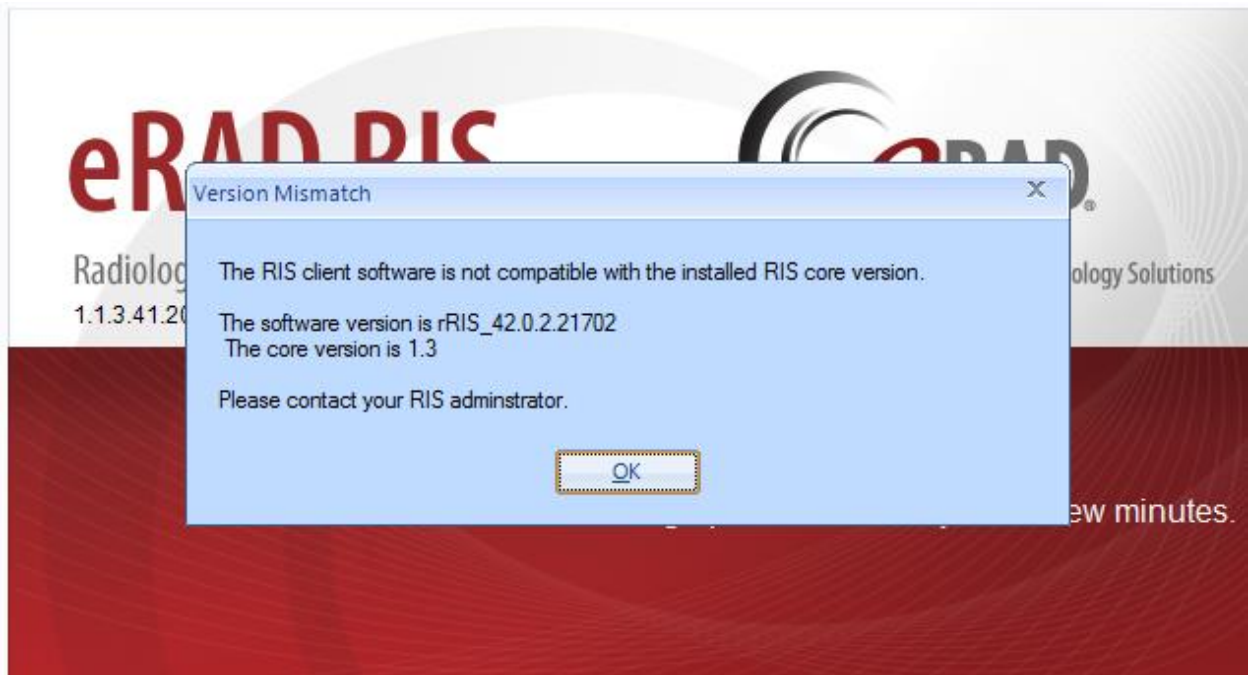


**7. eRAD RIS Release Version Numbers**

| Build | Patch | UI Version          | Core Version   | WS Version      | DB Version      | Notes  |
|-------|-------|---------------------|----------------|-----------------|-----------------|--|
| 41.1  | -     | 1.3.41.20918(3GB)   | 1.3.41.20791   | 1.3.41.20918    | 1.3.41.20739    | GUI.zip, Core install, Web Service and DB updates, Help files        |
| 41.1  | 1     | 1.3.41.20987(3GB)   | 1.3.41.20791   | 1.3.41.20918    | 1.3.41.20739    | GUI.zip  |
| 41.1  | 2     | 1.3.41.21162(3GB)   | 1.3.41.20791   | 1.3.41.21162    | 1.3.41.21150    | GUI.zip, Web Service and DB updates,                                 |
| 41.1  | 3     | 1.3.41.21264(3GB)   | 1.3.41.20791   | 1.3.41.21162    | 1.3.41.21150    | GUI.zip  |
| 42    | -     | 2.42.0.0.21261(3GB) | 2.42.0.0.21261 | 2.42.0.0.21261  | 2.42.0.0.21187  | Full version release   |
| 42    | 1     | 2.42.0.1.21597      | 2.42.0.0.21261 | 2.42.0.1.21597  | 2.42.0.0.21187  | GUI and Web Service updates  |
| 42    | 2     | 2.42.0.2.21702      | 2.42.0.0.21261 | 2.42.0.2.21702  | 2.42.0.0.21187  | GUI and Web Service updates  |
| 42    | 3     | 2.42.0.2.21806      | 2.42.0.0.21261 | 2.42.0.2.21806  | 2.42.0.0.21187  | GUI and Web Service updates  |
| 42    | 4     | 2.42.0.2.21862      | 2.42.0.0.21261 | 2.42.0.2.21806  | 2.42.0.4.21870  | GUI and Database updates   |
| 42    | 5     | 2.42.0.5.21924      | 2.42.0.0.21261 | 2.42.0.2.21806  | 2.42.0.4.21870  | GUI  |
| 42    | 6     | 2.42.0.5.22009      | 2.42.0.0.21261 | 2.42.0.5.22009  | 2.42.0.4.21870  | GUI and Web Service updates  |
| 42    | 7     | 2.42.0.7.22090      | 2.42.0.0.21261 | 2.42.0.6.22009  | 2.42.0.4.21870  | GUI.zip updates  |
| 42    | 8     | 2.42.0.7.22090      | 2.42.0.7.22150 | 2.42.0.6.22009  | 2.42.0.4.21870  | Web Service updates  |
| 42    | 9     | 2.42.0.9.22203      | 2.42.0.0.21261 | 2.42.0.9.22203  | 2.42.0.4.21870  | GUI and Web Service updates  |
| 42    | 9.1   | 2.42.0.9.22203      | 2.42.0.0.21261 | 2.42.0.9.22203  | 2.42.0.4.21870  | Web Service updates  |
| 42    | 10    | 2.42.0.10.22232     | 2.42.0.0.21261 | 2.42.0.9.22203  | 2.42.0.4.21870  | GUI.zip  |
| 42    | 10.1  | 2.42.0.10.22420     | 2.42.0.0.21261 | 2.42.0.9.22203  | 2.42.0.4.21870  | GUI.zip updates  |
| 42    | 11    | 2.42.0.11.22495a    | 2.42.0.0.21261 | 2.42.0.11.22471 | 2.42.0.11.22527 | GUI.zip, Web Service, Database updates. Management Report Deployment |
| 42    | 12    | 2.42.0.12.22982     | 2.42.0.0.21261 | 2.42.0.12.22982 | 2.42.0.12.22911 | GUI.zip, Web Service, Database updates.                              |
| 42.1  | -     | 2.42.1.0.22744(3GB) | 2.42.0.0.21261 | 2.42.1.0.22744  | 2.42.1.0.22736  | GUI.zip, Web Service, DB updates and Management Report Deployment    |
| 42.1  | 1     | 2.42.1.1.2296(3GB)  | 2.42.0.0.21261 | 2.42.1.1.22963  | 2.42.1.1.22864  | GUI.zip, Web Service, DB updates                                     |
| 42.1  | 2     | 2.42.1.2.23007(3GB) | 2.42.0.0.21261 | 2.42.1.2.23007  | 2.42.1.1.23007  | GUI.zip, Web Service, DB updates                                     |
| 42.1  | 3     | 2.42.1.2.23237(3GB) | 2.42.0.0.21261 | 2.42.1.2.23237  | 2.42.1.1.23007  | GUI.zip, Web Services  |

### 8. Installing

- 1) Copy and replace the current rRIS...zip file with the rRIS\_1.3.42.1.1.23237.zip file provided with this release.  
Be sure to make a backup of the ris.exe.config file contained within the current .zip folder.



If you receive the Version Mismatch error above the GUI.zip will need to be renamed to add 1.3. to it. The GUI.zip file name change is from rRIS\_42.1.1.23237→ rRIS\_1.3.42.1.1.23237. NOTE: the GUI.zip included with this release has already been renamed to include 1.3.

This is required for installs that have not reached build 42. Because the software installed on your local workstation is a pre-42 build it detects a version mismatch in the software naming and won't allow the newest build to be launched (it is looking for 1.3. in the name). Once the workstation(s) have reached a build of 42 we will no longer need to add "1.3." to the GUI.zip name. Also note that a core install will not resolve this issue below.

**NOTE:** If your upgrade is coming from 40.016.1 or prior a core install will be required. Versions (builds) of 40.017 and greater do not require a core install as long as you are at least at 40.017 (Core Version 1.3.40.18756)

## **eRAD RIS Server Update**

- 2) Stop each service listed below. Copy the files from the RIS Service Updates folder to the directory for each rRISService. Be sure to make backup of all files, but especially the rRISServices.exe.config and rRISServices.vshost.exe.config files.

*rRISService directories include:*

- a) *rRISService*
- b) *CDS rRISService*
- c) *Wedge rRISService*
- d) *DDE rRISService*

**Restart each service.**