

# Server Update

For eRAD RIS

Version 2.0

Build 2.2017.1

Update 2.2017.1.1

---

No part of this material may be published, reproduced, stored in a retrieval system, or transmitted

in any form or by any means without the prior written permission from eRAD.

Page 1

## **Table of Contents**

New Features.....	3
Resolved Items .....	5
New Access Strings .....	5
Code Stream .....	6
Package Contents .....	7
Intended Audience .....	7
Who is affected.....	8
eRAD RIS Release Version Numbers .....	9
Installing .....	10
Client/GUI.....	10
Web Service .....	10
Database Updates .....	13

## NEW FEATURES

## FEATURE #16082 – EXTEND THE STUDY EXTRA INFO FEATURE TO INCLUDE ORDER EXTRA INFO

eRAD RIS has had the ability to store extra information received from an external ordering system at the study level, using a feature called *StudyExtraInfo*. This feature extends this functionality to allow us to store information at the **order** level.

Sometimes there is a need to store additional information that may be customer specific, particularly information received from one system that also needs to be passed to corresponding systems at certain points in the workflow.

A new lookup table of *OrderExtraInfo* was created for specifying the Code with which the RIS will be receiving information to be stored. The table is listed under Configure>System folder. Access to the table is controlled by a new access string titled *Config.LookupEditor.OrderExtraInfo* with a default of None. The table consists of the Order Extra Info Code, Display Name, Description, Display Order, Last Updated and Active columns.

Order Extra Info Code	Display Name	Description	Display Order	Last Updated	Active
Contains:	Contains:	Contains:	Equals:	Contains:	Contains:
Click here to add a new row					
Test external system	Test external system	Test external system	1	02-22-2017 11:22 AM	Y
-BACKUP	BACKUP	Backup Order Extra Info Code	1	02-15-2017 1:38 PM	Y
-OEIC1	-OEIC1	Order Extra Info Code 1	1	02-15-2017 1:38 PM	Y

Messages sent will specify the Order Extra Info Code and have a value field. These messages will be stored in another new DataBase table *c\_order\_extra\_info* that is not accessible from the GUI.

No part of this material may be published, reproduced, stored in a retrieval system, or transmitted

in any form or by any means without the prior written permission from eRAD.

An example c\_order\_extra\_info node to be sent to eRAD RIS:

```
<ext1:c_order_extra_info>  
  <order_extra_info_code>Test external system</order_extra_info_code>  
  <value>test value to be stored in c_order_extra_info table</value>  
</ext1:c_order_extra_info>
```

## RESOLVED ITEMS

eRAD RIS

Redmine #	Subject
16113	Waiting for PACS dialog is now showing when expected.
16166	Audio files are now being deleted as appropriate for editors.
16187	Demographics match on phone number is now compatible with c_patient_phone pattern.

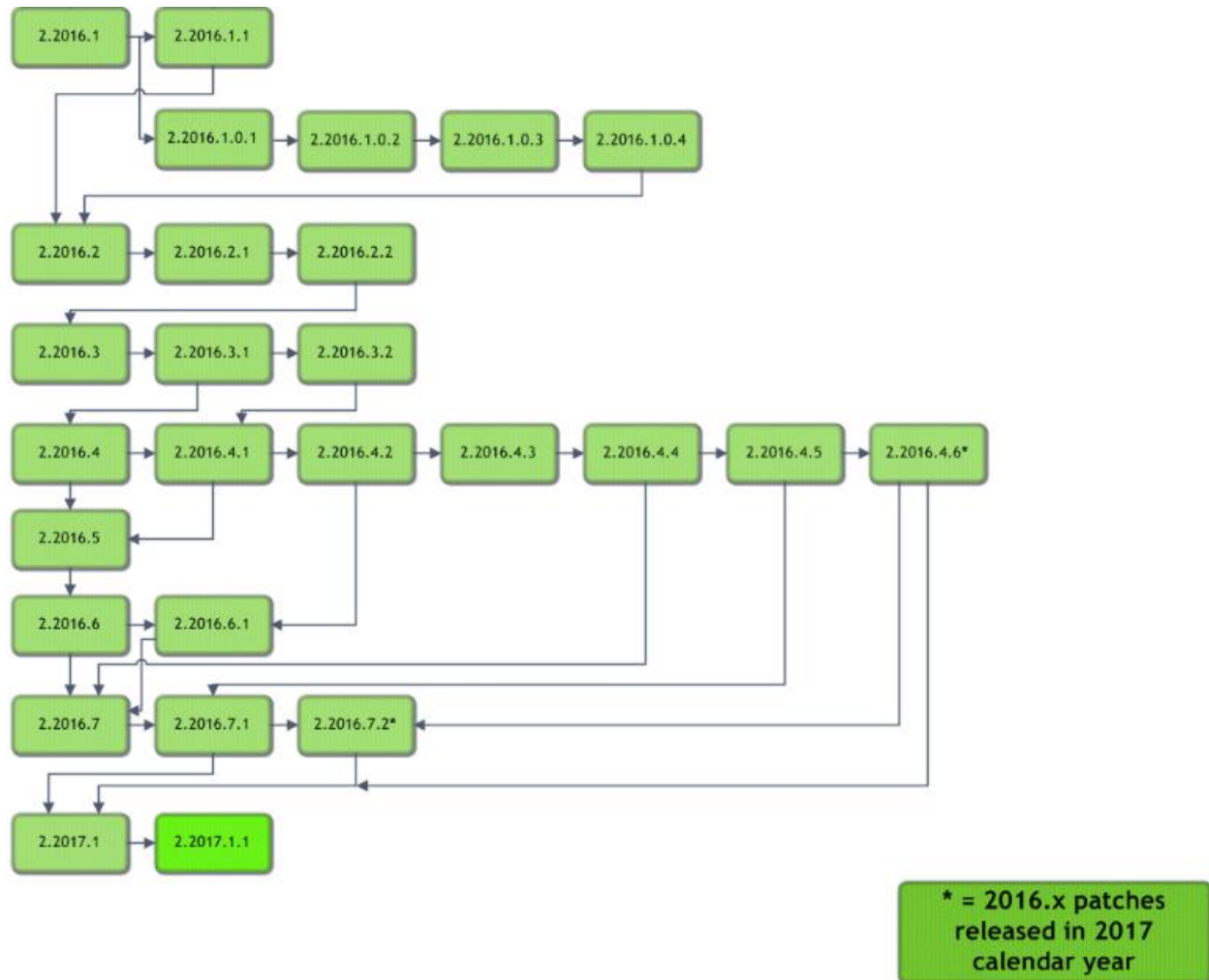
## NEW ACCESS STRINGS

Setting	Default	Purpose
Config.LookupEditor.OrderExtraInfo	None	Controls access to the look-up table editor for OrderExtraInfo.

---

No part of this material may be published, reproduced, stored in a retrieval system, or transmitted

in any form or by any means without the prior written permission from eRAD.

**CODE STREAM****Legend:**

Light Green = Previously Released software

Bright Green = Current Release

No part of this material may be published, reproduced, stored in a retrieval system, or transmitted

in any form or by any means without the prior written permission from eRAD.

## PACKAGE CONTENTS

 _ReleaseNotes	2/17/2017 4:13 PM
 DB	2/17/2017 9:44 AM
 rRISService	2/17/2017 9:43 AM
 ThickClient	2/17/2017 4:11 PM
 RISServerMasterCert	3/31/2016 1:38 PM

## INTENDED AUDIENCE

THE INTENDED AUDIENCE FOR THIS DOCUMENT IS THE RADNET CLINICAL SYSTEMS TEAM AND THE ERAD SUPPORT/SERVICE TEAM.

---

No part of this material may be published, reproduced, stored in a retrieval system, or transmitted

in any form or by any means without the prior written permission from eRAD.

## WHO IS AFFECTED

Build 2017.1 installs. This server update must be applied to 2017.1.



## ERAD RIS RELEASE VERSION NUMBERS

Build	Patch	UI Version	Core Version	WS Version	DB Version	Digital Forms	Patient Portal	UM Portal	Notes
2016.1	-	2.16.1.0.33419 (3GB)	2.16.1.0.33079	2.16.1.0.33419	2.16.1.0.33416				GUI.zip, Web Service, DB, Management Reports, Questionnaire and Citrix Bridge
2016.1	1	2.16.1.1.33672 (3GB)	2.16.1.0.33079	2.16.1.0.33419	2.16.1.0.33416				GUI.zip
2016.1	.0.1	2.16.1.0.1 (3GB)	2.16.1.0.33079	2.16.1.0.33419	2.16.1.0.33416				GUI.zip (This is not included in 2016.1.1, version directly above)
2016.1	.0.2	2.16.1.0.1 (3GB)	2.16.1.0.33079	2.16.1.0.2	2.16.1.0.33416				Wedge Web Services only
2016.1	.0.3	2.16.1.0.3 (3GB)	2.16.1.0.33079	2.16.1.0.3	2.16.1.0.3.00128918				GUI.zip, Web Services and DB
2016.1	.0.4	2.16.1.0.4 (3GB)	2.16.1.0.33079	2.16.1.0.4	2.16.1.0.3.00128918				GUI.zip, Web Services
2016.2	-	2.16.2.0 (3GB)	2.16.2.0	2.16.2.0	2.16.2.0.00172540				Full Version Release - GUI.zip, Web Service, DB, Management Reports, Questionnaire and Citrix Bridge
2016.2	1	2.16.2.1 (3GB)	2.16.2.0	2.16.2.0	2.16.2.0.00172540				GUI.zip and Citrix Bridge
2016.2	2	2.16.2.2 (3GB)	2.16.2.0	2.16.2.0	2.16.2.2.00243102				GUI.zip, DB and Citrix Bridge
2016.3	-	2.16.3.0 (3GB)	2.16.3.0	2.16.3.0	2.16.3.0.00257101	2.16.3.0			Full Version Release
2016.3	1	2.16.3.1	2.16.3.0	2.16.3.1	2.16.3.1.00298834	2.16.3.0			GUI.zip, Web Service and DB
2016.3	2	2.16.3.2	2.16.3.0	2.16.3.2	2.16.3.1.00298834	2.16.3.0			GUI.zip and Web Service
2016.4	-	2.16.4.0	2.16.4.0	2.16.4.0	2.16.4.0.00301943	2.16.4.0	1.16.4.0.310284		Full Version Release
2016.4	1	2.16.4.1	2.16.4.0	2.16.4.1	2.16.4.0.00301943	2.16.4.0	1.16.4.0.310284		GUI and Web Service updates
2016.4	2	2.16.4.2 (3GB)	2.16.4.0	2.16.4.1	2.16.4.0.00301943	2.16.4.0	1.16.4.2.460241		GUI and Patient Portal updates
2016.4	3	2.16.4.3 (3GB)	2.16.4.0	2.16.4.3	2.16.4.3.00483474	2.16.4.0	1.16.4.3.489120		GUI and Patient Portal updates
2016.4	4	2.16.4.4 (3GB)	2.16.4.0	2.16.4.3	2.16.4.3.00483474	2.16.4.0	1.16.4.3.489120		GUI
2016.4	5	2.16.4.5 (3GB)	2.16.4.0	2.16.4.3	2.16.4.3.00483474	2.16.4.0			GUI
2016.4	6	2.16.4.6 (3GB)	2.16.4.0	2.16.4.3	2.16.4.3.00483474	2.16.4.0			GUI
2016.5	-	2.16.5.0 (3GB)	2.16.5.0	2.16.5.0	2.16.5.0.00349303	2.16.5.0	1.16.5.0.362009		Full Version Release
2016.6	-	2.16.6.0 (3GB)	2.16.6.0	2.16.6.0	2.16.6.0.00411295	2.16.6.0	1.16.6.0.432471		Full Version Release
2016.6	1	2.16.6.1 (3GB)	2.16.6.0	2.16.6.0	2.16.6.0.00411295	2.16.6.0	1.16.6.1.468583		GUI and Patient Portal updated
2016.7	-	2.16.7.0 (3GB)	2.16.7.0	2.16.7.0	2.16.7.0.00490835	2.16.7.0	1.16.7.0.493031	2.16.7.0.493008	Full version release
2016.7	1	2.16.7.1 (3GB)	2.16.7.0	2.16.7.1	2.16.7.0.00490835	2.16.7.0	1.16.7.0.493031	2.16.7.0.493008	GUI and Web Service updates
2016.7	2	2.16.7.2 (3GB)	2.16.7.0	2.16.7.2	2.16.7.0.00490835	2.16.7.0	1.16.7.0.493031	2.16.7.0.493008	GUI and Web Service updates
2017.1	-	2.17.1.0 (3GB)	2.17.1.0	2.17.1.0	2.17.1.0.00559886	2.17.1.0	2.17.1.0.572290	2.17.1.0.00000	Full Version Release
2017.1	1	2.17.1.1 (3GB)	2.17.1.0	2.17.1.1	2.17.1.1.00589952	2.17.1.0	2.17.1.0.572290	2.17.1.0.00000	GUI, Web Service and DB updates

No part of this material may be published, reproduced, stored in a retrieval system, or transmitted

in any form or by any means without the prior written permission from eRAD.

## INSTALLING

### CLIENT/GUI

Copy and replace the current rRIS...zip file with the eRAD\_rRIS\_2017.1.1.zip file provided with this release.

Be sure to make a backup of the ris.exe.config file contained within the current .zip folder.

### WEB SERVICE

This updated is only required for the Wedge Web Services. The Core RIS Service and Document Distribution Service are not required to be updated.

1. The web service upgrade consists of replacing the files in the RIS Web Service directory with the files supplied in the rRISService folder with this build. Always create a backup of the files being replaced. This upgrade includes 128 files in the rRISService folder and 7 sub folders. Of those folders, 1 is a folder titled **"XSL"** that contains a sub folder and files within the subfolder. Another folder is titled **"deploy"** that contains the new .config files that will be deployed with the user of the file called "ServicesConfigWizard.exe" (see instructions below). Folders ar (Arabic), he (Hebrew), pt\_BR (Brazilian Portuguese) and es-AR (Argentina Spanish) are localization folders. The WedgePlugins folder contains various plugin files for RADAR, MIRTH, Ensemble, etc...

### **Services Configuration Wizard**

With the release of 42 to decrease the chance of losing configuration setting and missing new configuration options, we will no longer include the configuration files in the release in the main set of files, but they will now

---

No part of this material may be published, reproduced, stored in a retrieval system, or transmitted

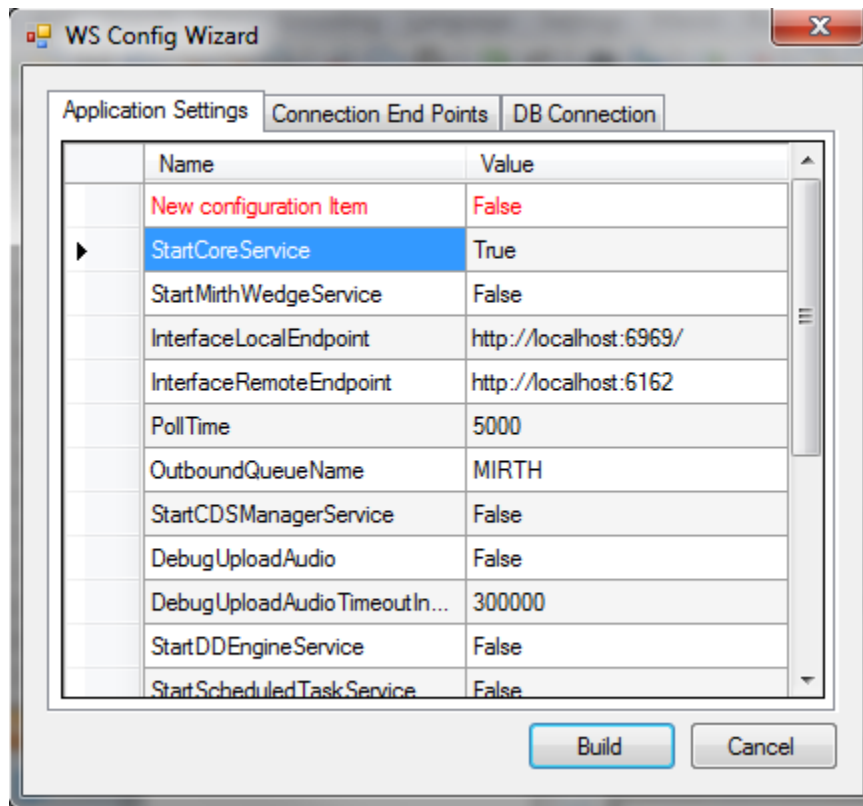
in any form or by any means without the prior written permission from eRAD.

exist in a “deploy” folder, which will contain the three site configurable config files; applicationsettings, connectionstrings, and services as well as a copy of the rRISServices.exe configuration file. The contents of this folder should not be required to be touched.

On the install of a new service, all files will be copied to the appropriate locations on the server (no configurations will be over written). If instructed or to confirm no new configurations have been added the user can run the new application “ServicesConfigWizard.exe”

This application will read the existing configuration file(s) (if files exist), and compare to the provided new configuration files then will display three tabs, for each configuration file:

**Application Settings:** all existing configuration value will be displayed, if there are any new configuration entries they will be displayed in red.



**Connection End Points:** will display the existing configuration, if the value is left blank then that entry will not be created, in the case of “Study Service” or “CDS Service” if both http and net.tcp were not provided then that endpoint will not be created at all.

WS Config Wizard

Application Settings | **Connection End Points** | DB Connection

**Study Service**

http:// localhost:8040 /rIS/

net.tcp:// localhost:8041 /rIS/

**Notify Service**

net.tcp:// localhost:7095 /rIS/

**CDS Service**

http:// localhost:7092 /rIS/

net.tcp:// localhost:7093 /rIS/

Build Cancel

---

## DATABASE UPDATES

---

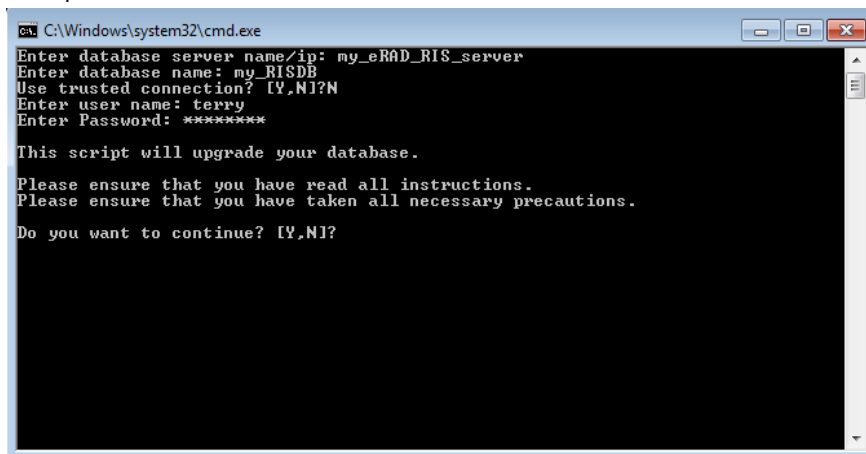
No part of this material may be published, reproduced, stored in a retrieval system, or transmitted in any form or by any means without the prior written permission from eRAD.

Always run the upgrade scripts in a test environment of the actual database to make sure they run cleanly. If any errors occur please contact development.

*Note: There is a new upgrade process introduced with B43.1 called "RunUpgrade.bat". The batch file will open a command window. This process will prompt you for the database server name, database name and authentication credentials. There is no need to run the database upgrade scripts manually as was done in previous releases.*

- 1) From the upgrade folder, double click the "RunUpgrade.bat" command file.
- 2) Enter the server name, database name and authentication credentials to the database. You have 2 choices for authentication credentials.
- 3) You can choose to use "Trusted connection". Using this option will pass the identity of the currently logged on user. If this user has "db\_owner" access to the eRAD RIS database then feel free to use this options.
- 4) If you decide not to use "Trusted connection" then you will be prompted for user id and password.

Example:



```
C:\Windows\system32\cmd.exe
Enter database server name/ip: my_eRAD_RIS_server
Enter database name: my_RISDB
Use trusted connection? [Y,N]?N
Enter user name: terry
Enter Password: *****

This script will upgrade your database.
Please ensure that you have read all instructions.
Please ensure that you have taken all necessary precautions.
Do you want to continue? [Y,N]?
```

- 5) After the upgrade program has finished you can find the upgrade logs in the “log” folder. The file name will be eRAD\_RIS\_db\_upgrade\_timestamp.log, where timestamp is a value representing the date and time the upgrade started. If you see any errors please contact the development team