

# **Server Update**

For eRAD RIS  
Version 2.0  
Build 2.2016.7  
Update 2.2016.7.9

## **Table of Contents**

Resolved Items.....	3
Code Stream.....	4
Package Contents .....	5
Intended Audience .....	5
Affected Installs .....	5
eRAD RIS Release Version Numbers .....	6
Installing .....	7
Client/GUI.....	7
Web Service .....	7
Database Updates.....	8

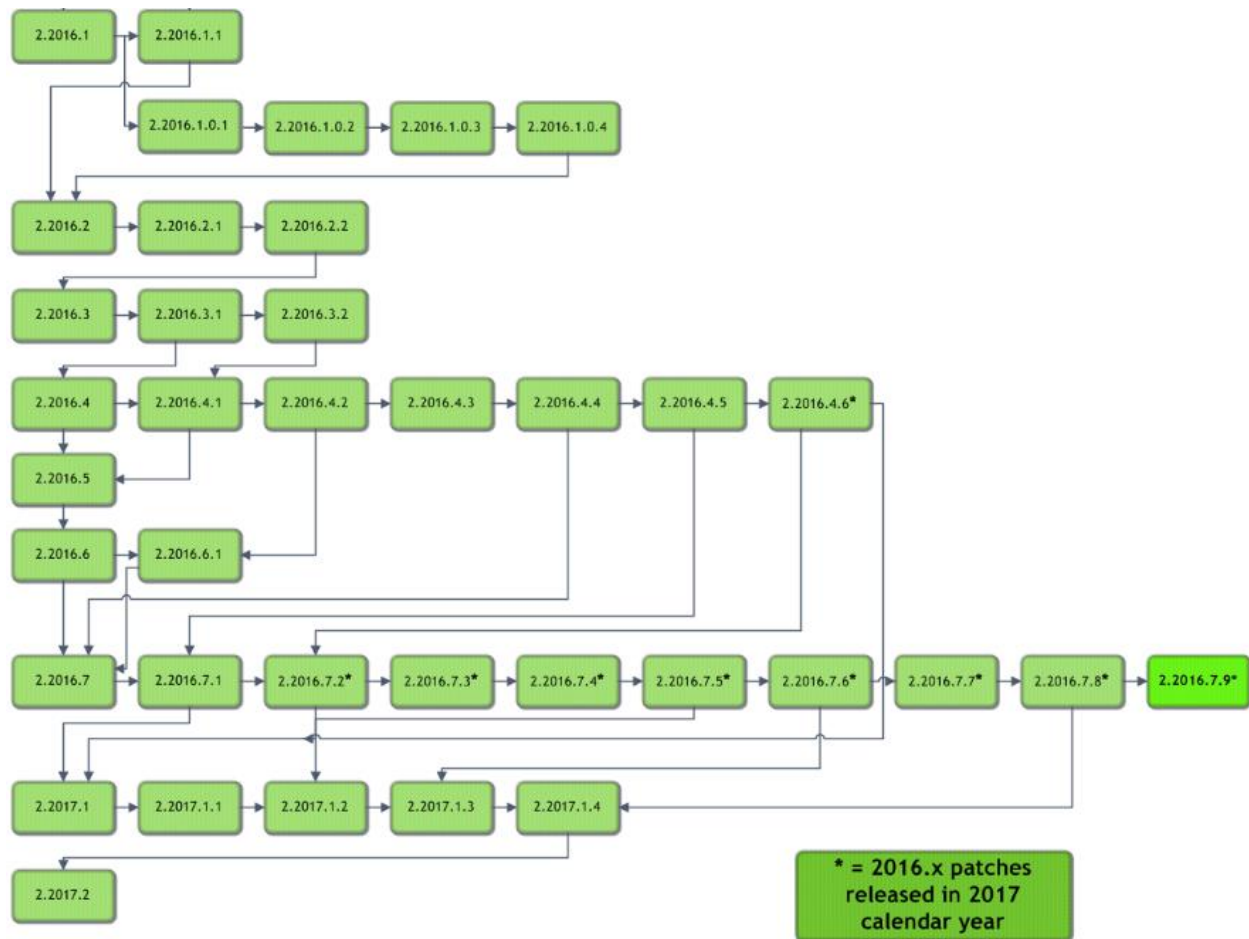
**RESOLVED ITEMS****eRAD RIS**

Redmine #	Subject
17209	An index change was made to resolve deadlock issues on c_locked_item.
17208	A change was made to the handling of sequence ID in the External Interface helper to allow for changes to c_order_item or c_study_item via Inbound Wedge.
17193	Resolved an issue that could cause the M*Modal text expander file to be overwritten.
17176	Region and Practice are once more prepopulating when creating a new Appointment without patient context.
17123	'Alternative' procedures added during Utilization Review now properly replace the billing codes for the original procedure.
17243	UM Portal version number is now displaying correctly.
17206	Adjusted a database upgrade script to more efficiently backfill formatted phone number.

**Utilization Management Connect**

Redmine #	Subject
17071	'By Status' filter is now sorting and filtering appropriately.
17207	Resolved a performance issue which could cause the application to time out.

## CODE STREAM



**Legend:**

**Light Green = Previously Released software**

**Bright Green = Current Release**

**PACKAGE CONTENTS**

 _ReleaseNotes	05/17/2017 10:20 AM
 DB	05/16/2017 5:12 PM
 rRISService	05/16/2017 12:21 PM
 ThickClient	05/16/2017 5:13 PM
 UM_Portal	05/17/2017 9:42 AM

**INTENDED AUDIENCE**

The intended audience for this document is the RadNet Clinical Systems team and the eRAD Support/Service team.

**AFFECTED INSTALLS**

Build 2016.7 installs. This server update has GUI and Database updates. This update must be applied to 2016.7.8

## ERAD RIS RELEASE VERSION NUMBERS

Build	Patch	UI Version	Core Version	WS Version	DB Version	Digital Forms	Patient Portal	UM Portal	Provider Portal	Notes
2016.1	-	2.16.1.0.33419 (3GB)	2.16.1.0.33079	2.16.1.0.33419	2.16.1.0.33416					GUI.zip, Web Service, DB, Management Reports, Questionnaire and Citrix Bridge
2016.1	1	2.16.1.1.33672 (3GB)	2.16.1.0.33079	2.16.1.0.33419	2.16.1.0.33416					GUI.zip
2016.1	.0.1	2.16.1.0.1 (3GB)	2.16.1.0.33079	2.16.1.0.33419	2.16.1.0.33416					GUI.zip (This is not included in 2016.1.1, version directly above)
2016.1	.0.2	2.16.1.0.1 (3GB)	2.16.1.0.33079	2.16.1.0.2	2.16.1.0.33416					Wedge Web Services only
2016.1	.0.3	2.16.1.0.3 (3GB)	2.16.1.0.33079	2.16.1.0.3	2.16.1.0.3.00128918					GUI.zip, Web Services and DB
2016.1	.0.4	2.16.1.0.4 (3GB)	2.16.1.0.33079	2.16.1.0.4	2.16.1.0.3.00128918					GUI.zip, Web Services
2016.2	-	2.16.2.0 (3GB)	2.16.2.0	2.16.2.0	2.16.2.0.00172540					Full Version Release - GUI.zip, Web Service, DB, Management Reports, Questionnaire and Citrix Bridge
2016.2	1	2.16.2.1 (3GB)	2.16.2.0	2.16.2.0	2.16.2.0.00172540					GUI.zip and Citrix Bridge
2016.2	2	2.16.2.2 (3GB)	2.16.2.0	2.16.2.0	2.16.2.2.00243102					GUI.zip, DB and Citrix Bridge
2016.3	-	2.16.3.0 (3GB)	2.16.3.0	2.16.3.0	2.16.3.0.00257101	2.16.3.0				Full Version Release
2016.3	1	2.16.3.1	2.16.3.0	2.16.3.1	2.16.3.1.00298834	2.16.3.0				GUI.zip, Web Service and DB
2016.3	2	2.16.3.2	2.16.3.0	2.16.3.2	2.16.3.1.00298834	2.16.3.0				GUI.zip and Web Service
2016.4	-	2.16.4.0	2.16.4.0	2.16.4.0	2.16.4.0.00301943	2.16.4.0	1.16.4.0.310284			Full Version Release
2016.4	1	2.16.4.1	2.16.4.0	2.16.4.1	2.16.4.0.00301943	2.16.4.0	1.16.4.0.310284			GUI and Web Service updates
2016.4	2	2.16.4.2 (3GB)	2.16.4.0	2.16.4.1	2.16.4.0.00301943	2.16.4.0	1.16.4.2.460241			GUI and Patient Portal updates
2016.4	3	2.16.4.3 (3GB)	2.16.4.0	2.16.4.3	2.16.4.3.00483474	2.16.4.0	1.16.4.3.489120			GUI and Patient Portal updates
2016.4	4	2.16.4.4 (3GB)	2.16.4.0	2.16.4.3	2.16.4.3.00483474	2.16.4.0	1.16.4.3.489120			GUI
2016.4	5	2.16.4.5 (3GB)	2.16.4.0	2.16.4.3	2.16.4.3.00483474	2.16.4.0				GUI
2016.4	6	2.16.4.6 (3GB)	2.16.4.0	2.16.4.3	2.16.4.3.00483474	2.16.4.0				GUI
2016.5	-	2.16.5.0 (3GB)	2.16.5.0	2.16.5.0	2.16.5.0.00349303	2.16.5.0	1.16.5.0.362009			Full Version Release
2016.6	-	2.16.6.0 (3GB)	2.16.6.0	2.16.6.0	2.16.6.0.00411295	2.16.6.0	1.16.6.0.432471			Full Version Release
2016.6	1	2.16.6.1 (3GB)	2.16.6.0	2.16.6.0	2.16.6.0.00411295	2.16.6.0	1.16.6.1.468583			GUI and Patient Portal updated
2016.7	-	2.16.7.0 (3GB)	2.16.7.0	2.16.7.0	2.16.7.0.00490835	2.16.7.0	1.16.7.0.493031	2.16.7.0.493008		Full version release
2016.7	1	2.16.7.1 (3GB)	2.16.7.0	2.16.7.1	2.16.7.0.00490835	2.16.7.0	1.16.7.0.493031	2.16.7.0.493008		GUI and Web Service updates
2016.7	2	2.16.7.2 (3GB)	2.16.7.0	2.16.7.2	2.16.7.0.00490835	2.16.7.0	1.16.7.0.493031	2.16.7.0.493008		GUI and Web Service updates
2016.7	3	2.16.7.3 (3GB)	2.16.7.0	2.16.7.3	2.16.7.0.00490835	2.16.7.0	1.16.7.0.493031	2.16.7.0.493008		GUI and Web Service updates
2016.7	4	2.16.7.4 (3GB)	2.16.7.0	2.16.7.3	2.16.7.0.00490835	2.16.7.0	1.16.7.0.493031	2.16.7.0.493008		GUI
2016.7	5	2.16.7.5 (3GB)	2.16.7.0	2.16.7.3	2.16.7.0.00490835	2.16.7.0	1.16.7.0.493031	2.16.7.0.493008		GUI
2016.7	6	2.16.7.6 (3GB)	2.16.7.0	2.16.7.6	2.16.7.0.00490835	2.16.7.0	1.16.7.0.493031	2.16.7.0.493008		GUI and Web Service updates
2016.7	7	2.16.7.7 (3GB)	2.16.7.0	2.16.7.7	2.16.7.0.00490835	2.16.7.0	1.16.7.0.493031	2.16.7.0.493008		GUI and Web Service updates
2016.7	8	2.16.7.8 (3GB)	2.16.7.0	2.16.7.7	2.16.7.8.00683507	2.16.7.0	1.16.7.0.493031	2.16.7.0.493008		GUI and DB updates
2016.7	9	2.16.7.9 (3GB)	2.16.7.0	2.16.7.9	2.16.7.9.00715012	2.16.7.0	1.16.7.0.493031	2.16.7.9.723457		GUI, Web Services, DB updates and UM Portal
2017.1	-	2.17.1.0 (3GB)	2.17.1.0	2.17.1.0	2.17.1.0.00559886	2.17.1.0	2.17.1.0.572290	2.17.1.0.000000		Full Version Release
2017.1	1	2.17.1.1 (3GB)	2.17.1.0	2.17.1.1	2.17.1.1.00589952	2.17.1.0	2.17.1.0.572290	2.17.1.0.000000		GUI, Web Service and DB updates
2017.1	2	2.17.1.2 (3GB)	2.17.1.0	2.17.1.2	2.17.1.2.00621962	2.17.1.0	2.17.1.0.572290	2.17.1.0.000000		GUI, Web Service and DB updates
2017.1	3	2.17.1.3 (3GB)	2.17.1.0	2.17.1.3	2.17.1.3.00640480	2.17.1.0	2.17.1.0.572290	2.17.1.0.000000		GUI, Web Service and DB updates
2017.1	4	2.17.1.4 (3GB)	2.17.1.0	2.17.1.4	2.17.1.4.00692239	2.17.1.0	2.17.1.4.701924	2.17.1.0.000000		GUI, Web Service, DB and Patient Portal updates
2017.2	-	2.17.2.0 (3GB)	2.17.2.0	2.17.2.0	2.17.2.0.00695782	2.17.2.0	2.17.2.0.702238	2.17.2.0.702213	2.17.2.0.702226	Full Version Release. First release of Provider Portal

## INSTALLING

### CLIENT/GUI

Copy and replace the current rRIS...zip file with the eRAD\_rRIS\_2016.7.9.zip file provided with this release.

Be sure to make a backup of the ris.exe.config file contained within the current .zip folder.

### WEB SERVICE

This updated is only required for the Wedge Web Services. The Core RIS Service and Document Distribution Service are not required to be updated.

1. The web service upgrade consists of replacing the files in the RIS Web Service directory with the files supplied in the rRISService folder with this build. Always create a backup of the files being replaced. This upgrade includes 134 files in the rRISService folder and 7 sub folders. Of those folders, 1 is a folder titled "XSL" that contains a sub folder and files within the subfolder. Another folder is titled "deploy" that contains the new .config files that will be deployed with the user of the file called "ServicesConfigWizard.exe" (see instructions below). Folders ar (Arabic), he (Hebrew), pt\_BR (Brazilian Portuguese) and es-AR (Argentina Spanish) are localization folders. The WedgePlugins folder contains various plugin files for RADAR, MIRTH, Ensemble, etc...

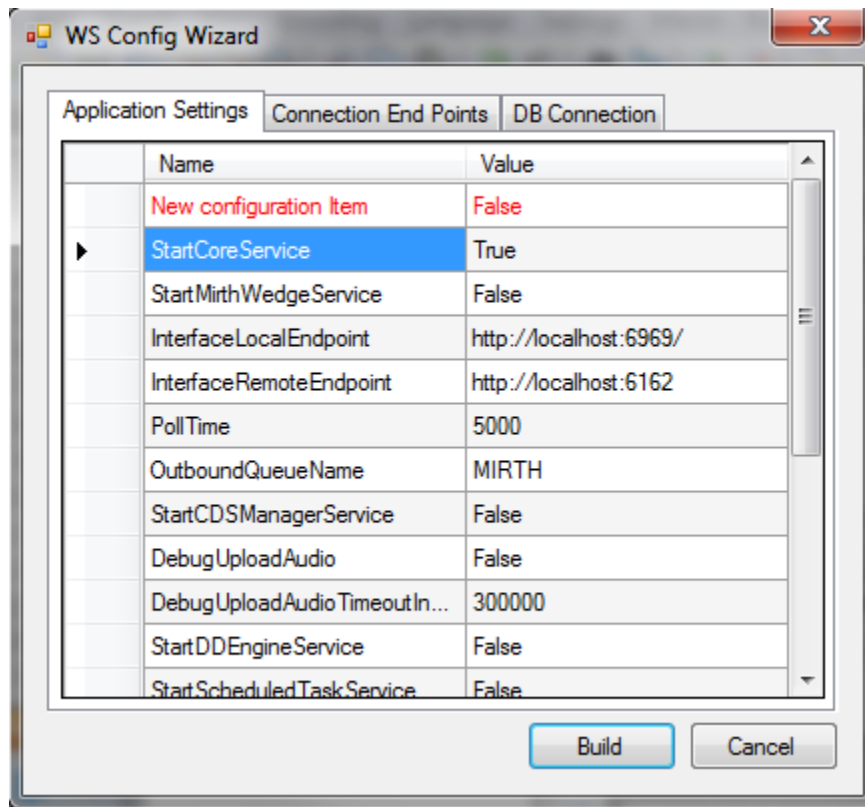
#### Services Configuration Wizard

With the release of 42 to decrease the chance of losing configuration setting and missing new configuration options, we will no longer include the configuration files in the release in the main set of files, but they will now exist in a "deploy" folder, which will contain the three site configurable config files; applicationsettings, connectionstrings, and services as well as a copy of the rRISServices.exe configuration file. The contents of this folder should not be required to be touched.

On the install of a new service, all files will be copied to the appropriate locations on the server (no configurations will be over written). If instructed or to confirm no new configurations have been added the user can run the new application "ServicesConfigWizard.exe"

This application will read the existing configuration file(s) (if files exist), and compare to the provided new configuration files then will display three tabs, for each configuration file:

Application Settings: all existing configuration value will be displayed, if there are any new configuration entries they will be displayed in red.



## DATABASE UPDATES

Always run the upgrade scripts in a test environment of the actual database to make sure they run cleanly. If any errors occur please contact development.

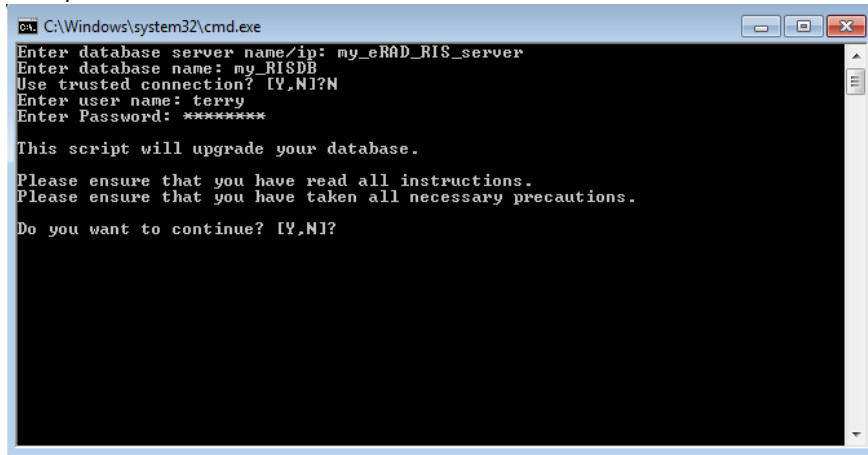
Note: There is a new upgrade process introduced with B43.1 called "RunUpgrade.bat". The batch file will open a command window. This process will prompt you for the database server name, database name and authentication credentials. There is no need to run the database upgrade scripts manually as was done in previous releases.

- 1) From the upgrade folder, double click the "RunUpgrade.bat" command file.
- 2) Enter the server name, database name and authentication credentials to the database. You have 2 choices for authentication credentials.
- 3) You can choose to use "Trusted connection". Using this option will pass the identity of the currently logged on user. If this user has "db\_owner" access to the eRAD RIS database then feel free to use this options.



- 4) If you decide not to use “Trusted connection” then you will be prompted for user id and password.

Example:



```
C:\Windows\system32\cmd.exe
Enter database server name/ip: my_eRAD_RIS_server
Enter database name: my_RISDB
Use trusted connection? [Y,N]?N
Enter user name: terry
Enter Password: *****

This script will upgrade your database.
Please ensure that you have read all instructions.
Please ensure that you have taken all necessary precautions.
Do you want to continue? [Y,N]?
```

After the upgrade program has finished you can find the upgrade logs in the “log” folder. The file name will be eRAD\_RIS\_db\_upgrade\_timestamp.log, where timestamp is a value representing the date and time the upgrade started. If you see any errors please contact the development team