



eRAD RIS

RELEASE ANNOUNCEMENT

Build 4.2023.062

UPDATED AUGUST 10, 2023

TABLE OF CONTENTS

Summary 2

- Release Announcement2
- Resolved Issues2
- New Features2

Feature Details 3

- Lookup Tables3
 - Feature #33382 - Visual indication of inactive rows in the RIS Lookup Editor3
- Scanning3
 - Feature #33492 - New Image Transfer Method configuration setting for Scanning3

Version Details 5

- Code Stream5

PUBLICATION HISTORY

Revision	Author	Description
August 10, 2023	Kevin Brooks / Hilary Saltmarsh	▪ Commercial release.

SUMMARY

Release Announcement

This release of eRAD RIS 4.2023.062 resolves two scheduling issues and a scanning issue.

Resolved Issues

This release resolves the following issues:

Category	Redmine #	Subject
Scheduling	32694	Resolved Scheduling issue where the Site dropdown was returning as blank value instead of defaulting to (all).
Scheduling	33947	Resolved Scheduling issue where switching between regions within the Practice Picker would cause the selection to revert to (all).

New Features

This release introduces the following features and enhancements:

Category	Redmine #	Subject	Description
Lookup Tables	33382	Visual indication of inactive rows in the RIS Lookup Editor	This enhancement to Lookup Tables adds a visual indicator to inactive rows in the RIS Lookup Editor to better distinguish inactive items.
Scanning	33492	New Image Transfer Method configuration setting for Scanning	This enhancement to Scanning introduces new configuration settings to better support duplex scanning in Windows 11.

FEATURE DETAILS

Lookup Tables

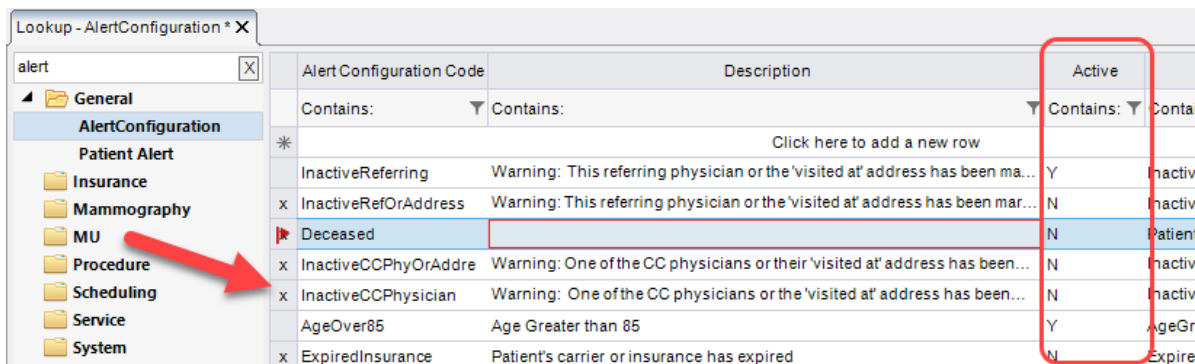
Feature #33382 - Visual indication of inactive rows in the RIS Lookup Editor

Summary

This enhancement to Lookup Tables adds a visual indicator to inactive rows in the RIS Lookup Editor to better distinguish inactive items.

Previously, users would frequently have difficulty troubleshooting why the RIS is behaving a certain way when configuring or testing in production, only to realize some configuration had active flag = 'N'.

With this change, a new visual indicator will always display on the row showing when the row is inactive, even when the `Active` column is offscreen or when errors exist the row:



Configuration Instructions

No System Administrator actions are necessary to enable this feature.

Scanning

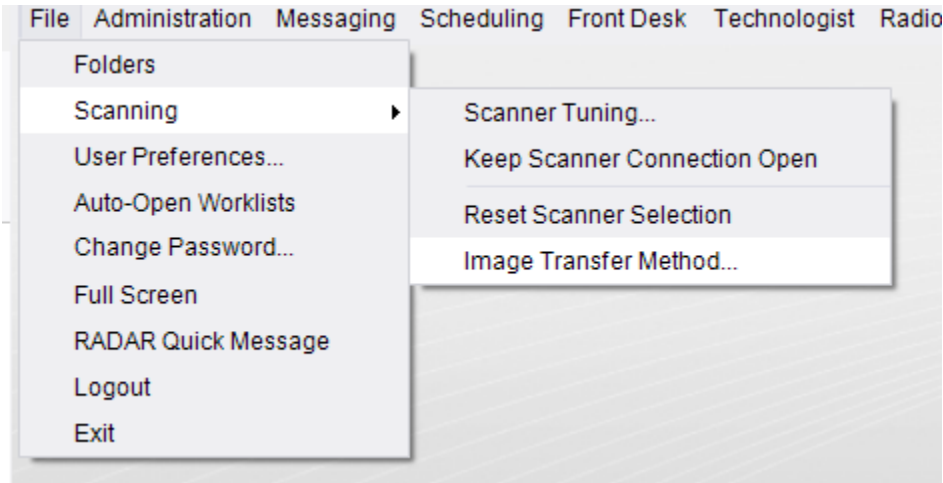
Feature #33492 - New Image Transfer Method configuration setting for Scanning

Summary

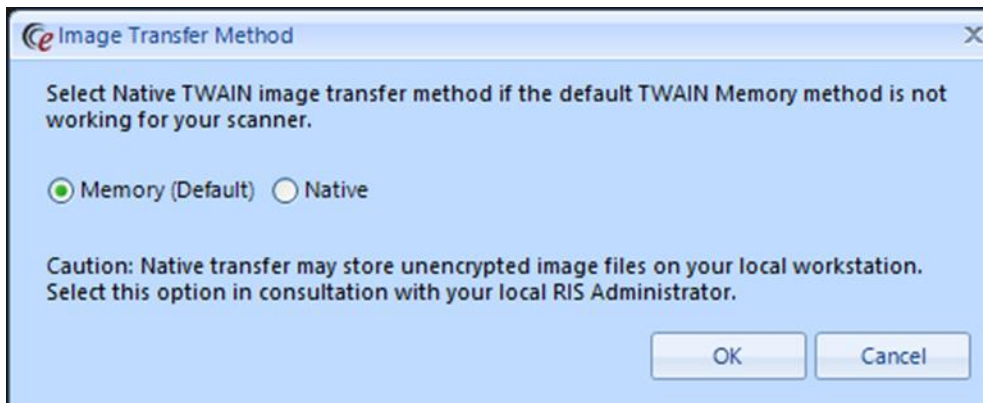
This enhancement to Scanning introduces new configuration settings to better support duplex scanning in Windows 11.

Previously, the Windows 11 TWAIN (scanning) driver did not correctly support duplex (double sided) scanning on some scanners, resulting in the first page being scanned twice, and the second page not at all.

With this change, a new `Image Transfer Method` option for scanning has been introduced.



Affected users may now change their scanner's configuration to switch their transfer method from Memory to Native to correct the issue.



Caution - This implementation caches data on the workstation which may represent a PHI security concern for some customers.

Configuration Instructions

No System Administrator actions are necessary to enable this feature.

VERSION DETAILS

Code Stream

The following source code branches have been merged into this release:

