

# Server Update

For eRAD RIS  
Version 2.0  
Build 42  
Update 42.1.2

## **Table of Contents**

1. Defects Resolved .....	3
2. Changes to Configuration .....	4
3. Code Stream.....	5
4. Package Contents .....	6
5. Intended Audience .....	8
6. Who is affected .....	8
7. eRAD RIS Release Version Numbers .....	9
8. Installing .....	10

## **eRAD RIS Server Update**

### **1. Defects Resolved**

Redmine #	Subject	Priority
6713	Once an external patient is matched to a new or existing internal patient, it cannot be found by searching for external MRN	Urgent
6721	Lock is not being released when the message "The study was updated moments ago. It is no longer on the worklist" is displayed.	Normal

## 2. Changes to Configuration

The following changes were introduced in 42.1.1. For more information on the access strings and system configuration lookup table changes, please refer to the eRAD RIS Build 42 Server Update 42.1.1 document.

Setting Placeholder	Setting	Default	Purpose / Controls Access to
Access string / User Group Permission tables	Clinical.CreateTableInReport	Full	Grants access to creating tables in diagnostic reports
SystemConfig lookup	VerbalOrderScanDocumentType	Script	Default scan document type for a verbal order. Note if this scan document type doesn't exist, the first scan document type will be chosen.
SystemConfig lookup	ElectronicOrderScanDocumentType	Script	Default scan document type for a Electronic/HL7 order.

## PLEASE NOTE IMPORTANT CHANGE

**NOTE:** During testing of these new PACS features, it was discovered that using ^ as a cache delimiter does not work with an "equals" style query. Recommended character is now \$. The delimiter is set in the PACSServer lookup table. In the figure below notice the caret ^ is replaced with a dollar sign \$ for the PEI eRAD PACS server.

Pacs Server Code	Description	Protocol	Url	Port	Display Order	Pacs Ae Title	Cache Query As Contains Flag	Cache Delimiter	Cache Field	Cache
Contains: ▼	Contains: ▼	Contains: ▼	Contains: ▼	Equals: ▼	Equals: ▼	Contains: ▼	Contains: ▼	Contains: ▼	Contains: ▼	Cor
Click here to add a new row										
helen	helen	http	helen.erad.com	80	1		N	^	UDF2	N
ts72wl	ts72wl Greenville	http	192.168.25.102	80	1		N	^	UDF2	N
PEI eRAD PACS	PEI eRAD PACS	http	192.168.16.10	80	1	PEIWL1	N	\$	UDF2	Y

Figure 2.1 – PACSServer lookup displaying new cache delimiter

A configuration change to the ris.exe.config file was introduced in build 2.42 this setting was designed to lessen the delays when retrieving lookup tables that are larger in size. This config setting, as mentioned, is located in the ris.exe.config file located in the <appSettings> section of the file

This setting is:

```
<add key="RowLevelCacheDataSetNamesCSV" value="ProcedureCode,TemplateMacro,Indication"/>
```

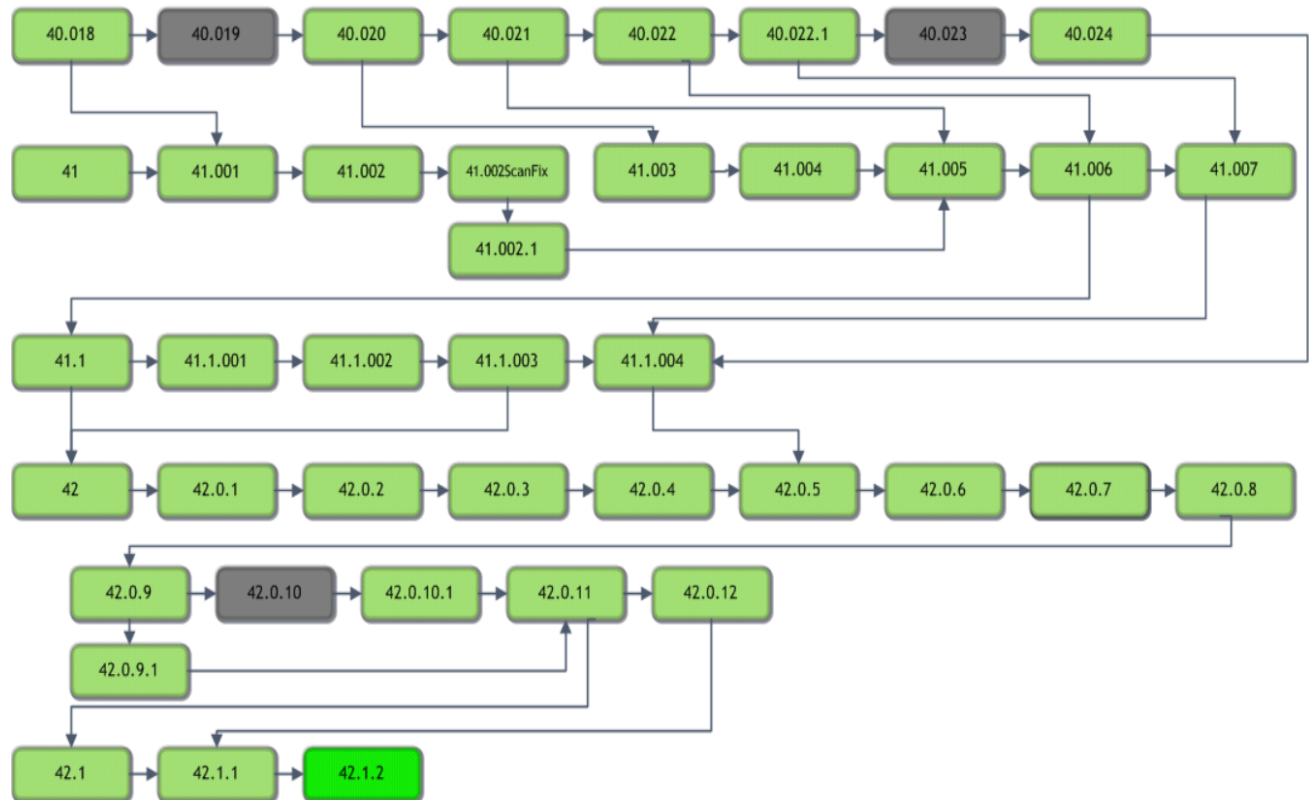
Where the value can be any lookup table, and a value="\*", will retrieve all lookups.

The setting has resulted in undesired results of possible slowness, depending on the lookup table, and possibly additional bugs. Because of this, we are requesting that all sites comment out this line in the ris.exe.config table. The commented line will look like

```
<!--<add key="RowLevelCacheDataSetNamesCSV" value="ProcedureCode,TemplateMacro,Indication"/>-->
```

### 3. Code Stream

#### eRAD RIS - Source Code Evolution



#### **Legend:**

Light Green = Released software

Gray = Will not be released

Bright Green = Current Release

### **4. Package Contents**

Files included for this server update:

1) GUI ZIP Updates folder contains:

- rRIS\_1.3.42.1.2.23007.zip

2) RIS\_Service\_Updates contains:

- ABCpdf.dll
- ABCpdf9-32.dll
- ABCpdf9-64.dll
- CDSJobManager.dll
- CDSJobManager.pdb
- CdsLib.dll
- CdsLib.xml
- CdsLib.XmlSerializers.dll
- CommonLib.dll
- CommonLib.pdb
- contents.txt
- DDEngine.dll
- DDEngine.pdb
- Interop.ANYMODALCAPTURECTRLLib.dll
- Interop.FAXCOMEXLib.dll
- Microsoft.Practices.EnterpriseLibrary.Caching.dll
- Microsoft.Practices.EnterpriseLibrary.Caching.pdb
- Microsoft.Practices.EnterpriseLibrary.Common.dll
- Microsoft.Practices.EnterpriseLibrary.Common.pdb
- Microsoft.Practices.EnterpriseLibrary.Logging.dll
- Microsoft.Practices.EnterpriseLibrary.Logging.pdb
- Microsoft.Practices.ServiceLocation.dll
- Microsoft.Practices.ServiceLocation.pdb
- Microsoft.Practices.Unity.dll
- Microsoft.Practices.Unity.Interception.dll
- Microsoft.Practices.Unity.Interception.pdb
- Microsoft.Practices.Unity.pdb
- Microsoft.ReportViewer.Common.dll
- Microsoft.ReportViewer.WinForms.dll
- Microsoft.ReportViewer.WinForms.xml
- Newtonsoft.Json.dll
- Newtonsoft.Json.xml
- Ninject.dll
- Ninject.Web.Common.dll
- Ninject.Web.Common.xml
- Ninject.xml
- O2S.Components.PDFRender4NET.dll
- PDFToImages.exe
- rRISServices.exe
- rRISServices.pdb
- rRISServicesx64.exe
- ScheduledTaskManager.dll
- ScheduledTaskManager.pdb
- ServicesConfigWizard.exe
- ServicesConfigWizard.pdb
- SignatureApprovalService.exe
- SignatureApprovalService.pdb
- System.Net.Http.dll
- System.Net.Http.Formatting.dll
- System.Net.Http.Formatting.xml
- System.Net.Http.WebRequest.dll
- System.Net.Http.WebRequest.xml
- System.Net.Http.xml
- System.Web.dll
- System.Web.Helpers.dll
- System.Web.Helpers.xml
- System.Web.Http.dll
- System.Web.Http.SelfHost.dll
- System.Web.Http.SelfHost.xml
- System.Web.Http.WebHost.dll
- System.Web.Http.WebHost.xml
- System.Web.Http.xml
- System.Web.Mvc.dll
- System.Web.Mvc.xml
- System.Web.Optimization.dll
- System.Web.Providers.dll
- System.Web.Razor.dll
- System.Web.Razor.xml
- System.Web.WebPages.Deployment.dll
- System.Web.WebPages.Deployment.xml
- System.Web.WebPages.dll
- System.Web.WebPages.Razor.dll
- System.Web.WebPages.Razor.xml
- System.Web.WebPages.xml
- Turreau.Gilles.FaxDotNet.dll
- Turreau.Gilles.FaxDotNet.pdb
- Turreau.Gilles.FaxDotNet.xml
- WCFService.dll
- WCFService.pdb
- WCFServiceTests.dll
- WCFServiceTests.pdb
- WebApi.dll
- WebApi.pdb
- Wedge.exe
- Wedge.pdb

## **eRAD RIS Server Update**

The rRIS\_Service\_Updates also contains to subfolders:

- A. Deploy folder contains
  - a. Applicationsettings
  - b. ReleaseVersion-connectionstrings
  - c. rRISServices.exe
  - d. services
- B. XSL subfolder contains:  
Subfolder titled “Stylesheets” which contains:
  - a. CDAToHTMLCompleteReport.xslt
  - b. CDAToHTMLImpressionSection.xslt
  - c. CDAToRIS.xslt
  - d. CDAToTxt.xslt
  - e. DocumentModelReport.xslt
  - f. DocumentModelReportAsXml.xslt
  - g. CCDA Subfolder contains
    - a. C-CDA.xml
    - b. eRadStylesheet.xml
    - c. generalTemplates.xml
    - d. header.xml
    - e. sectionAdministeredMedications.xml
    - f. sectionAllergies.xml
    - g. sectionEncounters.xml
    - h. sectionFuncCogStatus.xml
    - i. sectionImmunizations.xml
    - j. sectionInstructions.xml
    - k. sectionMedications.xml
    - l. sectionPlanOfCare.xml
    - m. sectionProblemList.xml
    - n. sectionProcedures.xml
    - o. sectionReasonForVisit.xml
    - p. sectionResults.xml
    - q. sectionSocialHistory.xml
    - r. sectionVitalSigns.xml

3) SQL folder contains:

- B42.1.2.sql

### **5. Intended Audience**

This document is created by the RIS Development team for the RadNet/eRAD RIS Implementation teams.

### **6. Who is affected**

Build 42 installs. Server updates are not cumulative. This server update must be applied to 42.1.1

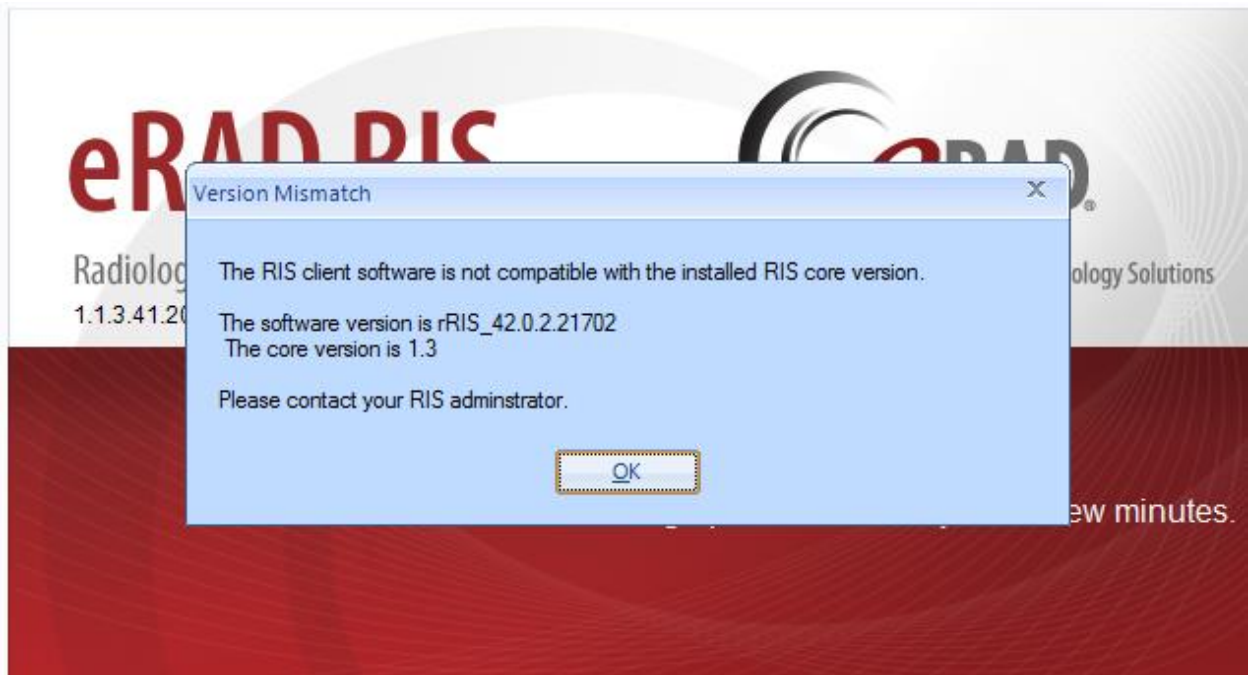


## 7. eRAD RIS Release Version Numbers

Build	Patch	UI Version	Core Version	WS Version	DB Version	Notes
41	-	1.3.41.19135(3GB)	1.3.41.19135	1.3.41.19135	1.3.41.19135	Full version release
41	1	1.3.41.19256(3GB)	1.3.41.19135	1.3.41.19256	1.3.41.19256	GUI.zip, Web Service and database updates
41	2	1.3.41.19620(3GB)	1.3.41.19135	1.3.41.19620	1.3.41.19346	GUI.zip and Web Service
41	2sf	1.3.41.19620SF(3G)	1.3.41.19135	1.3.41.19620	1.3.41.19346	GUI.zip
41	2.1	1.3.41.20622(3GB)	1.3.41.19135	1.3.41.20617	1.3.41.19346	GUI.zip and Web Service
41	3	1.3.41.20125(3GB)	1.3.41.19135	1.3.41.20171	1.3.41.19346	GUI.zip , Web Service and Recognizer
41	4	1.3.41.20285(3GB)	1.3.41.19135	1.3.41.20171	1.3.41.19346	GUI.zip
41	5	1.3.41.20809(3GB)	1.3.41.20708	1.3.41.20792	1.3.41.20738	GUI.zip, Core install, Web Service and database updates
41	6	1.3.41.20912(3GB)	1.3.41.20708	1.3.41.20792	1.3.41.20738	GUI.zip
41.1	-	1.3.41.20918(3GB)	1.3.41.20791	1.3.41.20918	1.3.41.20739	GUI.zip, Core install, Web Service and DB updates, Help files
41.1	1	1.3.41.20987(3GB)	1.3.41.20791	1.3.41.20918	1.3.41.20739	GUI.zip
41.1	2	1.3.41.21162(3GB)	1.3.41.20791	1.3.41.21162	1.3.41.21150	GUI.zip, Web Service and DB updates,
41.1	3	1.3.41.21264(3GB)	1.3.41.20791	1.3.41.21162	1.3.41.21150	GUI.zip
42	-	2.42.0.0.21261(3GB)	2.42.0.0.21261	2.42.0.0.21261	2.42.0.0.21187	Full version release
42	1	2.42.0.1.21597	2.42.0.0.21261	2.42.0.1.21597	2.42.0.0.21187	GUI and Web Service updates
42	2	2.42.0.2.21702	2.42.0.0.21261	2.42.0.2.21702	2.42.0.0.21187	GUI and Web Service updates
42	3	2.42.0.2.21806	2.42.0.0.21261	2.42.0.2.21806	2.42.0.0.21187	GUI and Web Service updates
42	4	2.42.0.2.21862	2.42.0.0.21261	2.42.0.2.21806	2.42.0.4.21870	GUI and Database updates
42	5	2.42.0.5.21924	2.42.0.0.21261	2.42.0.2.21806	2.42.0.4.21870	GUI
42	6	2.42.0.5.22009	2.42.0.0.21261	2.42.0.5.22009	2.42.0.4.21870	GUI and Web Service updates
42	7	2.42.0.7.22090	2.42.0.0.21261	2.42.0.6.22009	2.42.0.4.21870	GUI.zip updates
42	8	2.42.0.7.22090	2.42.0.7.22150	2.42.0.6.22009	2.42.0.4.21870	Web Service updates
42	9	2.42.0.9.22203	2.42.0.0.21261	2.42.0.9.22203	2.42.0.4.21870	GUI and Web Service updates
42	9.1	2.42.0.9.22203	2.42.0.0.21261	2.42.0.9.22203	2.42.0.4.21870	Web Service updates
42	10	2.42.0.10.22232	2.42.0.0.21261	2.42.0.9.22203	2.42.0.4.21870	GUI.zip
42	10.1	2.42.0.10.22420	2.42.0.0.21261	2.42.0.9.22203	2.42.0.4.21870	GUI.zip updates
42	11	2.42.0.11.22495a	2.42.0.0.21261	2.42.0.11.22471	2.42.0.11.22527	GUI.zip, Web Service, Database updates. Management Report Deployment
42	12	2.42.0.12.22982	2.42.0.0.21261	2.42.0.12.22982	2.42.0.12.22911	GUI.zip, Web Service, Database updates.
42.1	-	2.42.1.0.22744(3GB)	2.42.0.0.21261	2.42.1.0.22744	2.42.1.0.22736	GUI.zip, Web Service, DB updates and Management Report Deployment
42.1	1	2.42.1.1.2296(3GB)	2.42.0.0.21261	2.42.1.1.22963	2.42.1.1.22864	GUI.zip, Web Service, DB updates
42.1	2	2.42.1.2.23007(3GB)	2.42.0.0.21261	2.42.1.2.23007	2.42.1.1.23007	GUI.zip, Web Service, DB updates

### 8. Installing

- 1) Copy and replace the current rRIS...zip file with the rRIS\_1.3.42.1.1.23007.zip file provided with this release.  
Be sure to make a backup of the ris.exe.config file contained within the current .zip folder.



If you receive the Version Mismatch error above the GUI.zip will need to be renamed to add 1.3. to it. The GUI.zip file name change is from rRIS\_42.1.1.23007→ rRIS\_1.3.42.1.1.23007. NOTE: the GUI.zip included with this release has already been renamed to include 1.3.

This is required for installs that have not reached build 42. Because the software installed on your local workstation is a pre-42 build it detects a version mismatch in the software naming and won't allow the newest build to be launched (it is looking for 1.3. in the name). Once the workstation(s) have reached a build of 42 we will no longer need to add "1.3." to the GUI.zip name. Also note that a core install will not resolve this issue below.

**NOTE:** If your upgrade is coming from 40.016.1 or prior a core install will be required. Versions (builds) of 40.017 and greater do not require a core install as long as you are at least at 40.017 (Core Version 1.3.40.18756)

## **eRAD RIS Server Update**

- 2) Stop each service listed below. Copy the files from the RIS Service Updates folder to the directory for each rRISService. Be sure to make backup of all files, but especially the rRISServices.exe.config and rRISServices.vshost.exe.config files.

*rRISService directories include:*

- a) *rRISService*
- b) *CDS rRISService*
- c) *Wedge rRISService*
- d) *DDE rRISService*

**Restart each service.**

- 3) Run the B42.1.2.sql file against the eRAD RIS database instance