

# Server Update

For eRAD RIS

Version 2.0

Build 2.2017.3

Update 2.2017.3.2.2

**Table of Contents**

Package Contents .....3

Intended Audience .....3

Who is affected.....3

New Settings.....4

    Applicationsettings.config.....4

New Features.....5

    Feature #20319 – Copy and paste RTL characters for a PDF diagnostic report .....5

Code Stream .....6

eRAD RIS Release Version Numbers .....7

Installing .....8

    Web Service .....8

## PACKAGE CONTENTS

 _ReleaseNotes	5/22/2018 4:57 PM
 rRISService	5/22/2018 11:45 AM

## INTENDED AUDIENCE

The intended audience for this document is the RadNet Clinical Systems team and the eRAD Support/Service team. It is appropriate to share the document with any customers applying the patch, in order to review new feature descriptions and resolved defects.

## WHO IS AFFECTED

Build 2017.3 installs. This server update must be applied to 2017.3.2.1

## NEW SETTINGS

## APPLICATIONSETTINGS.CONFIG

Setting	Default	Purpose
GenerateRTLPDFForDiagnosticReports	False	When set to true, diagnostic reports will be generated in PDF format from the SSRS using the conversion library that supports specific character mappings that were problematic in the previous conversion method.

## NEW FEATURES

### FEATURE #20319 – COPY AND PASTE RTL CHARACTERS FOR A PDF DIAGNOSTIC REPORT

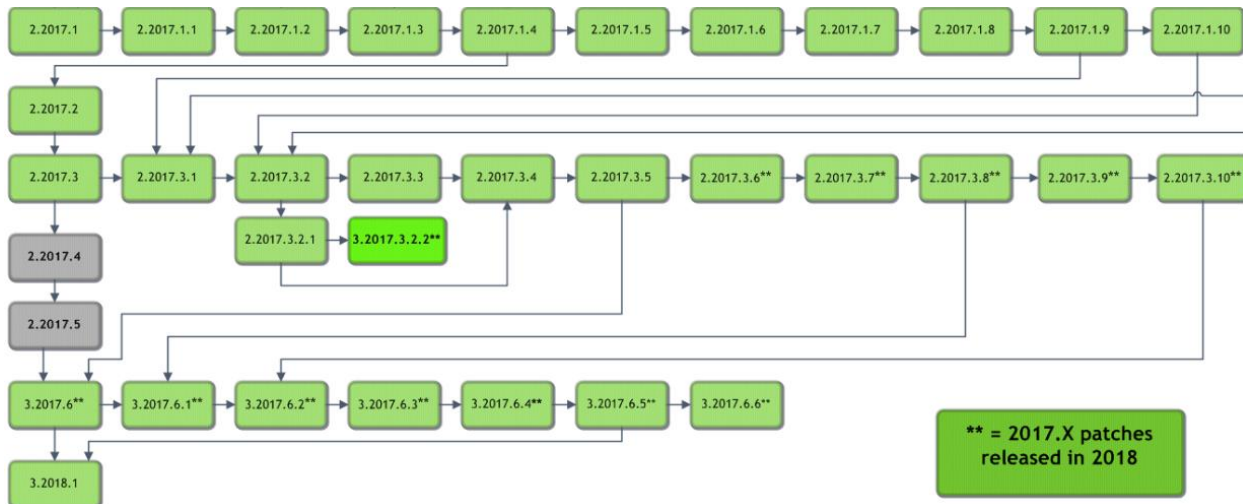
Previously, the [GenerateDiagnosticReport](#) web method on the External Interface Service (EIS) provided the option to export a PDF; however the file provided did not allow copy/pasting of Hebrew characters, which are rendered by SSRS as bitmap objects. To support this functionality for any customers using right to left languages, a new solution has been added to eRAD RIS that will provide the ability to export to a document from which text can be copy/pasted.

New functionality has been added to the core logic which generates diagnostic report PDFs from the SSRS. Instead of returning the PDF bytes received from the SSRs server, a new method of generating a PDF representation of the report has been implemented. A DOCX is requested from the reporting services, which is then passed to a DLL called DPN. The DPN DLL is a conversion library provided by Sub Systems, the company which supplies the RTL editor for reporting. This process eliminates problems with embedding certain character mappings which are required for proper copy and paste support. Because the conversion library is able to convert a DOCX to a PDF without using MS Office, it is more reliable under a heavy workload.

A new applicationsettings.config setting has been created to enable this new PDF generation functionality.

[GenerateRTLPDFForDiagnosticReports](#): Default = False

To enable the new functionality, this setting must be set to True for the service which is hosting the External Interface Service.

**CODE STREAM****Legend:**

Light Green = Previously Released software

Bright Green = Current Release

## ERAD RIS RELEASE VERSION NUMBERS

Build	Patch	UI Version	Core Version	WS Version	DB Version	Digital Forms	Patient Portal	UM Portal	Provider Portal	Notes
2017.1	-	2.17.1.0 (3GB)	2.17.1.0	2.17.1.0	2.17.1.0.00559886	2.17.1.0	2.17.1.0.572290	2.17.1.0.00000		Full Version Release
2017.1	1	2.17.1.1 (3GB)	2.17.1.0	2.17.1.1	2.17.1.1.00589952	2.17.1.0	2.17.1.0.572290	2.17.1.0.00000		GUI, Web Service and DB updates
2017.1	2	2.17.1.2 (3GB)	2.17.1.0	2.17.1.2	2.17.1.2.00621962	2.17.1.0	2.17.1.0.572290	2.17.1.0.00000		GUI, Web Service and DB updates
2017.1	3	2.17.1.3 (3GB)	2.17.1.0	2.17.1.3	2.17.1.3.00640480	2.17.1.0	2.17.1.0.572290	2.17.1.0.00000		GUI, Web Service and DB updates
2017.1	4	2.17.1.4 (3GB)	2.17.1.0	2.17.1.4	2.17.1.4.00692239	2.17.1.0	2.17.1.4.701924	2.17.1.0.00000		GUI, Web Service, DB and Patient Portal updates
2017.1	5	2.17.1.4 (3GB)	2.17.1.0	2.17.1.5	2.17.1.4.00692239	2.17.1.0	2.17.1.4.701924	2.17.1.0.00000		Web Service
2017.1	6	2.17.1.6 (3GB)	2.17.1.0	2.17.1.5	2.17.1.6.00745281	2.17.1.0	2.17.1.4.701924	2.17.1.0.00000		GUI and DB Updates
2017.1	7	2.17.1.7 (3GB)	2.17.1.0	2.17.1.5	2.17.1.6.00745281	2.17.1.0	2.17.1.4.701924	2.17.1.0.00000		GUI update
2017.1	8	2.17.1.8 (3GB)	2.17.1.0	2.17.1.5	2.17.1.6.00745281	2.17.1.0	2.17.1.4.701924	2.17.1.0.00000		GUI update
2017.1	9	2.17.1.9 (3GB)	2.17.1.0	2.17.1.5	2.17.1.6.00745281	2.17.1.0	2.17.1.4.701924	2.17.1.0.00000		GUI update
2017.1	10	2.17.1.10 (3GB)	2.17.1.0	2.17.1.10	2.17.1.6.00745281	2.17.1.0	2.17.1.4.701924	2.17.1.0.00000		GUI and Web Service update
2017.2	-	2.17.2.0 (3GB)	2.17.2.0	2.17.2.0	2.17.2.0.00695782	2.17.2.0	2.17.2.0.702238	2.17.2.0.702213	2.17.2.0.702226	Full Version Release. First release of Provider Portal
2017.3	-	2.17.3.0 (3GB)	2.17.3.0	2.17.3.0	2.17.3.0.00764112	2.17.3.0	2.17.3.0.321	2.17.3.0.321	2.17.3.0.321	Full Version Release. Including Patient, Provider and UM Portals
2017.3	1	2.17.3.1 (3GB)	2.17.3.0	2.17.3.1	2.17.3.1.00846328	2.17.3.1	2.17.3.1.853299	2.17.3.1.853301	2.17.3.1.856171	GUI, Web Service, DB. Including Patient, Provider and UM Portals
2017.3	2	2.17.3.2 (3GB)	2.17.3.0	2.17.3.2	2.17.3.2.00898348	2.17.3.2	2.17.3.2.913898	2.17.3.2.913899	2.17.3.1.856171	GUI, Web Service, DB. Including Patient, Provider and UM Portals
2017.3	2.1	2.17.3.2.1 (3GB)	2.17.3.0	2.17.3.2	2.17.3.2.00898348	2.17.3.2	2.17.3.2.913898	2.17.3.2.913899	2.17.3.1.856171	GUI Only
2017.3	2.2	2.17.3.2.1 (3GB)	2.17.3.0	2.17.3.2.2	2.17.3.2.00898348	2.17.3.2	2.17.3.2.913898	2.17.3.2.913899	2.17.3.1.856171	Web Services only
2017.3	3	2.17.3.3 (3GB)	2.17.3.0	2.17.3.3	2.17.3.3.00954008	2.17.3.2	2.17.3.3.962869	2.17.3.3.962870	2.17.3.3.962870	GUI, Web Service, DB. Including Patient, Provider and UM Portals
2017.3	4	2.17.3.4 (3GB)	2.17.3.0	2.17.3.4	2.17.3.4.00987562	2.17.3.2	2.17.3.3.962869	2.17.3.3.962870	2.17.3.3.962870	GUI, Web Service and DB
2017.3	5	2.17.3.5 (3GB)	2.17.3.0	2.17.3.5	2.17.3.5.01023250	2.17.3.2	2.17.3.5.1023087	2.17.3.5.1025862	2.17.3.5.1023087	GUI, Web Service, DB, Patient Portal, Referring Portal, UM Portal
2017.3	6	2.17.3.6 (3GB)	2.17.3.0	2.17.3.6	2.17.3.6.01065114	2.17.3.2	2.17.3.5.1023087	2.17.3.5.1025862	2.17.3.5.1023087	GUI, Web Service, DB,
2017.3	7	2.17.3.7 (3GB)	2.17.3.0	2.17.3.6	2.17.3.6.01065114	2.17.3.2	2.17.3.5.1023087	2.17.3.5.1025862	2.17.3.5.1023087	GUI
2017.3	8	2.17.3.8 (3GB)	2.17.3.0	2.17.3.8	2.17.3.6.01065114	2.17.3.2	2.17.3.5.1023087	2.17.3.5.1025862	2.17.3.5.1023087	GUI and Web Service
2017.3	9	2.17.3.8 (3GB)	2.17.3.0	2.17.3.9	2.17.3.6.01065114	2.17.3.2	2.17.3.5.1023087	2.17.3.5.1025862	2.17.3.5.1023087	Web Service
2017.3	10	2.17.3.10 (3GB)	2.17.3.0	2.17.3.10	2.17.3.10.01125764	2.17.3.2	2.17.3.5.1023087	2.17.3.5.1025862	2.17.3.5.1023087	GUI, Web Service and DB updates
2017.6	-	3.17.6.0 (3GB)	3.17.6.0	3.17.6.0	3.17.6.0.01037550	3.17.6.0	3.17.6.0.1037868	3.17.6.0.1037869	3.17.6.0.1037869	Full Version Release. Including Patient, Provider and UM Portals
2017.6	1	3.17.6.1 (3GB)	3.17.6.0	3.17.6.1	3.17.6.1.01094077	3.17.6.0	3.17.6.0.1037868	3.17.6.0.1037869	3.17.6.0.1037869	GUI, Web Service and DB updates
2017.6	2	3.17.6.2 (3GB)	3.17.6.0	3.17.6.2	3.17.6.2.01130171	3.17.6.2	3.17.6.2.1138297	3.17.6.2.1138298	3.17.6.2.1138298	GUI, Web Service, DB, Patient, Provider and UM Portals and Digital Forms
2017.6	3	3.17.6.3 (3GB)	3.17.6.0	3.17.6.3	3.17.6.3.01166033	3.17.6.3	3.17.6.3.1168622	3.17.6.3.1168622	3.17.6.3.1168623	GUI, Web Service, DB, Patient, Provider and UM Portals and Digital Forms
2017.6	4	3.17.6.4 (3GB)	3.17.6.0	3.17.6.4	3.17.6.4.01187509	3.17.6.4	3.17.6.4.1190295	3.17.6.4.1190295	3.17.6.4.1190295	GUI, Web Service, DB, Patient, Provider and UM Portals and Digital Forms
2017.6	5	3.17.6.5 (3GB)	3.17.6.0	3.17.6.5	3.17.6.4.01187509	3.17.6.4	3.17.6.5.1199064	3.17.6.5.1199063	3.17.6.5.1199064	GUI, Web Service, Patient, Provider and UM Portals
2017.6	6	3.17.6.6 (3GB)	3.17.6.0	3.17.6.6	3.17.6.6.01236363	3.17.6.4	3.17.6.5.1199064	3.17.6.5.1199063	3.17.6.5.1199064	GUI, Web Service and DB updates
2018.1	-	3.18.1.0 (3GB)	3.18.1.0	3.18.1.0	3.17.6.4.01187509	3.18.1.0	3.18.1.0.1229289	3.18.1.0.1229290	3.18.1.0.1229290	Full version release

## INSTALLING

### WEB SERVICE

1. The web service upgrade consists of replacing the files in the RIS Web Service directory with the files supplied in the rRISService folder with this build. Always create a backup of the files being replaced. This upgrade includes 122 files in the rRISService folder and 12 sub folders. Of those folders, 1 is a folder titled **"XSL"** that contains a sub folder and files within the subfolder. Another folder is titled **"deploy"** that contains the new .config files that will be deployed with the user of the file called "ServicesConfigWizard.exe" (see instructions below). Folders are (Arabic), en\_AU (Australian English), en-ZA (South Africa), he (Hebrew), pt\_BR (Brazilian Portuguese), es (Argentina Spanish) and ru-RU (Russian) and are localization folders. The WedgePlugins folder contains various plugin files for RADAR, MIRTH, Ensemble, etc...

#### Services Configuration Wizard

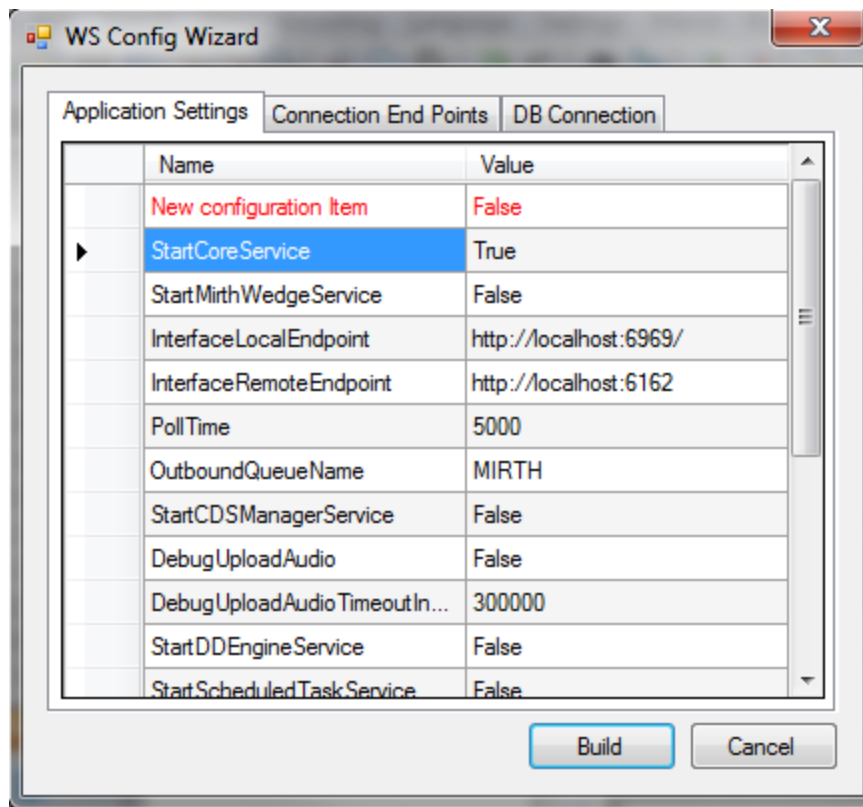
With the release of 42 to decrease the chance of losing configuration setting and missing new configuration options, we will no longer include the configuration files in the release in the main set of files, but they will now exist in a "deploy" folder, which will contain the three site configurable config files; applicationsettings, connectionstrings, and services as well as a copy of the rRISServices.exe configuration file. The contents of this folder should not be required to be touched.

On the install of a new service, all files will be copied to the appropriate locations on the server (no configurations will be over written). If instructed or to confirm no new configurations have been added the user can run the new application "ServicesConfigWizard.exe"

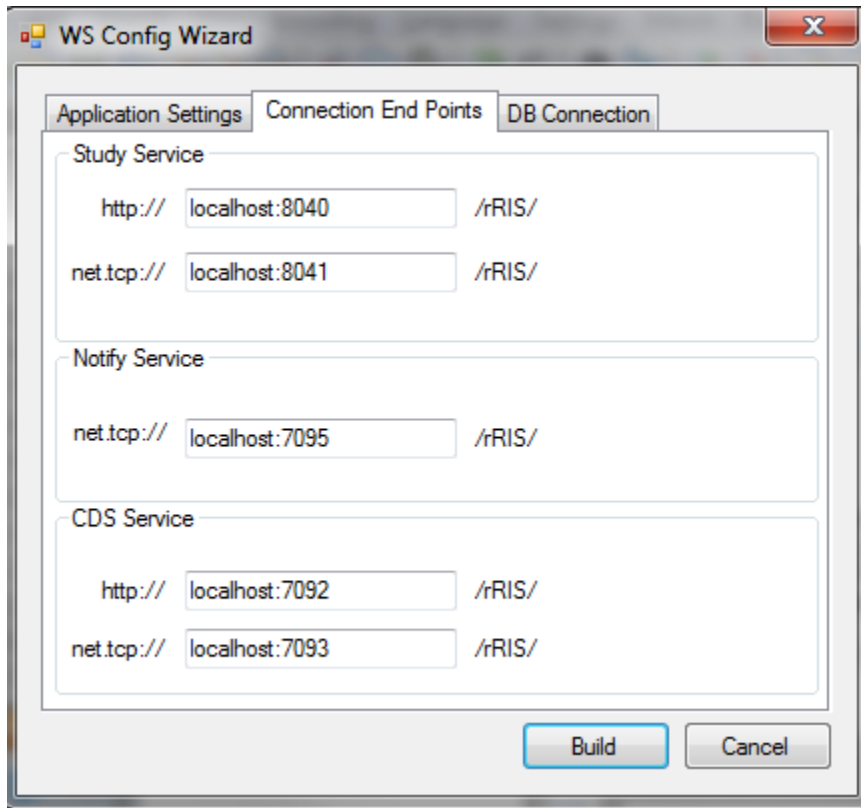
This application will read the existing configuration file(s) (if files exist), and compare to the provided new configuration files then will display three tabs, for each configuration file:

**Application Settings:** all existing configuration value will be displayed, if there are any new configuration entries they will be displayed in red.





**Connection End Points:** will display the existing configuration, if the value is left blank then that entry will not be created, in the case of “Study Service” or “CDS Service” if both http and net.tcp were not provided then that endpoint will not be created at all.



The image shows a Windows-style dialog box titled "WS Config Wizard". It has three tabs: "Application Settings", "Connection End Points" (which is selected), and "DB Connection". The "Connection End Points" tab contains three sections: "Study Service", "Notify Service", and "CDS Service". Each section has two rows of input fields. The "Study Service" section has "http://" with "localhost:8040" and "/rRIS/", and "net.tcp://" with "localhost:8041" and "/rRIS/". The "Notify Service" section has "net.tcp://" with "localhost:7095" and "/rRIS/". The "CDS Service" section has "http://" with "localhost:7092" and "/rRIS/", and "net.tcp://" with "localhost:7093" and "/rRIS/". At the bottom right of the dialog are "Build" and "Cancel" buttons.

Service	Protocol	Host:Port	Path
Study Service	http://	localhost:8040	/rRIS/
	net.tcp://	localhost:8041	/rRIS/
Notify Service	net.tcp://	localhost:7095	/rRIS/
CDS Service	http://	localhost:7092	/rRIS/
	net.tcp://	localhost:7093	/rRIS/