

# Server Update

For eRAD RIS  
Version 2.0  
Build 2.2016.1  
Update 2.2016.1.0.4

## **Table of Contents**

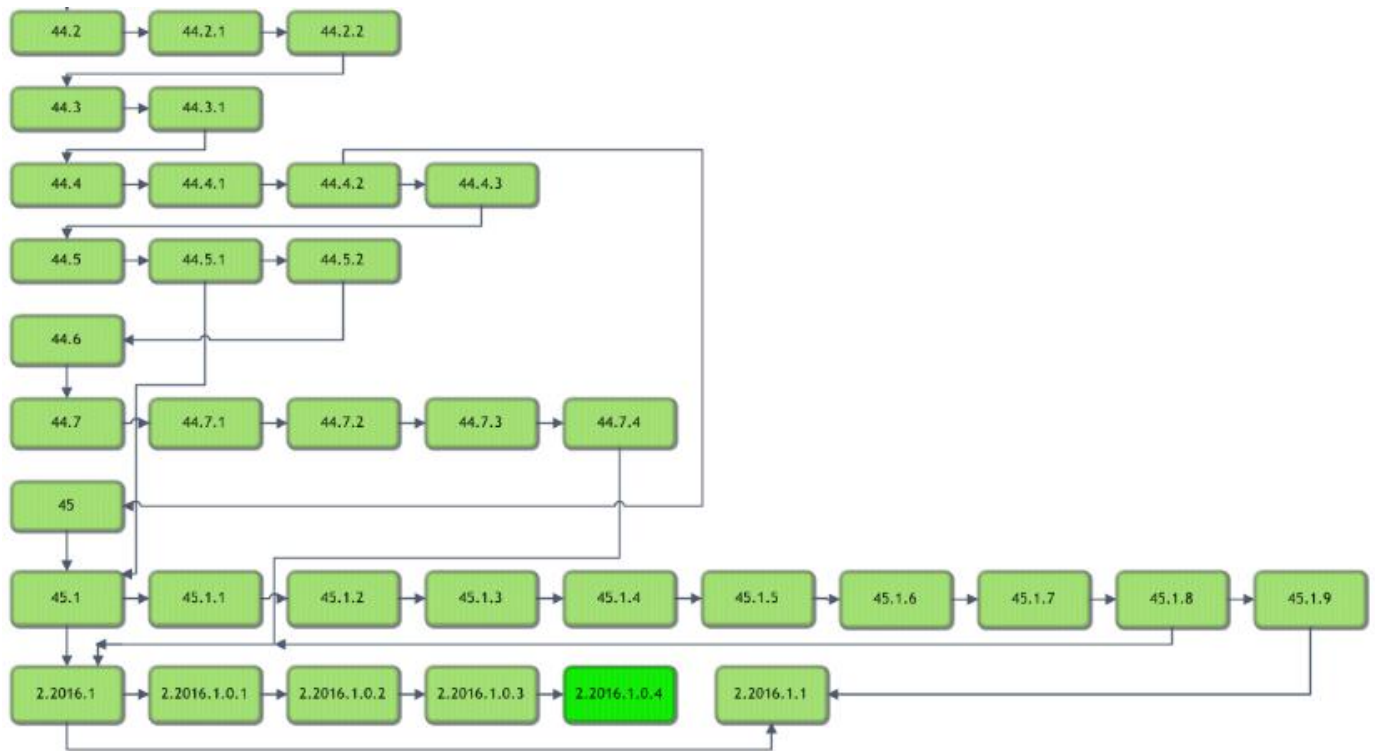
Resolved Items.....	3
Code Stream.....	4
Package Contents .....	5
Intended Audience .....	5
Who is affected .....	5
eRAD RIS Release Version Numbers .....	6
Installing .....	7
Client/GUI.....	7
Web Service .....	7

### **Resolved Items**

Redmine #	Subject
13599	Occasional error 'Implicit conversion from data type nvarchar to varbinary(max)'
13579	Files missing from RIS deployment ZIP file (Microsoft.SqlServer.Types.dll)
13568	The 'Matching Alternate MRN Issuer' should only display values related to the 'Matching Alternate MRN' column
13552	Performed_end_date occasionally not populated causing subsequent errors
13530	Formatting characters in MRN masks are inadvertently being removed upon save
13525	In Perform Exam, if a study is selected then de-selected for inclusion, it is still included, even though it is clearly un-checked
13522	Error scheduling an EMR order 'Cannot insert duplicate key row' when EMR MRN is the same but Issuer ID is different

## eRAD RIS Server Update

### Code Stream



### Legend:

Light Green = Released software

Gray = Will not be released

Bright Green = Current Release

### **Package Contents**

### **Intended Audience**

This document is created by the RIS Development team for the RadNet/eRAD RIS Implementation teams.

### **Who is affected**

This must be installed on systems that are already at version 2.2016.1.0.3

It should not be installed at a site that has 2016.1.1 installed, as the change in 2016.1.1 is not included in this release.

## eRAD RIS Release Version Numbers

Build	Patch	UI Version	Core Version	WS Version	DB Version	Notes
43.1	-	2.43.1.0.25850(3GB)	2.43.0.0.23171	2.43.1.0.25850	2.43.1.0.25771	GUI.zip Web Service and DB Updates
43.2	-	2.43.2.0.26864(3GB)	2.43.0.0.23171	2.43.2.0.26864	2.43.1.0.25771	GUI.zip and Web Service
44	-	2.44.0.0.26570(3GB)	2.44.0.0.26405	2.44.0.0.26570	2.44.0.0.26475	Full Version Release
44.1	-	2.44.0.0.26984(3GB)	2.44.0.0.26405	2.44.0.0.26984	2.44.0.0.26906	Gui.zip, Web Service, and DB
44.1	1	2.44.1.1.27093(3GB)	2.44.0.0.26405	2.44.1.0.26984	2.44.1.0.26906	Gui.zip
44.2	-	2.44.2.0.27410(3GB)	2.44.0.0.26405	2.44.2.0.27410	2.44.2.0.27365	Gui.zip, Web Service, and DB
44.2	1	2.44.2.1.27959(3GB)	2.44.0.0.26405	2.44.2.1.27959	2.44.2.1.27909	Gui.zip, Web Service, and DB
44.2	2	2.44.2.1.27959(3GB)	2.44.0.0.26405	2.44.2.2.28094	2.44.2.1.27909	Web Service
44.3	-	2.44.3.0.28292	2.44.0.0.26405	2.44.3.0.28277	2.44.3.0.28138	Gui.zip, Web Service, and DB
44.3	1	2.44.3.1.28535(3GB)	2.44.0.0.26405	2.44.3.1.28535	2.44.3.0.28138	Gui.zip and Web Service
44.4	-	2.44.4.0.28762(3GB)	2.44.0.0.26405	2.44.4.0.28762	2.44.4.0.28676	Gui.zip, Web Server, DB, SSRS Deployment
44.4	1	2.44.4.1.28953(3GB)	2.44.0.0.26405	2.44.4.1.28953	2.44.4.0.28676	Gui.zip and Web Service
44.4	2	2.44.4.2.29327(3GB)	2.44.0.0.26405	2.44.4.2.29327	2.44.4.0.28676	Gui.zip and Web Service
44.4	3	2.44.4.2.29722(3GB)	2.44.0.0.26405	2.44.4.2.29327	2.44.4.0.28676	Gui.zip and Web Service
44.5	-	2.44.5.0.30022(3GB)	2.44.0.0.26405	2.44.5.0.30022	2.44.5.0.29976	Gui.zip, Web Server, DB
44.5	1	2.44.5.1.30451(3GB)	2.44.0.0.26405	2.44.5.1.30451	2.44.5.1.30449	Gui.zip, Web Server, DB
44.5	2	2.44.5.2.30705(3GB)	2.44.0.0.26405	2.44.5.1.30705	2.44.5.1.30554	Gui.zip, Web Server, DB
45	-	2.45.0.0.29559(3GB)	2.45.0.0.26107	2.45.0.0.29559	2.45.0.0.29558	Full Version Release
45.1	-	2.45.1.0.30774(3GB)	2.45.0.0.26107	2.45.1.0.30774	2.45.1.0.30738	Gui.zip, Web Service, DB, SQLReporting, Questionnaire, Citrix support
45.1	1	2.45.1.1.31175(3GB)	2.45.0.0.26107	2.45.1.1.31175	2.45.1.1.31174	Gui.zip, Web Service, DB, SQLReporting, Questionnaire
45.1	2	2.45.1.1.31175(3GB)	2.45.0.0.26107	2.45.1.2.31378	2.45.1.1.31174	Web Service and Citrix Bridge
45.1	3	2.45.1.3.31452(3GB)	2.45.0.0.26107	2.45.1.3.31452	2.45.1.3.31369	GUI.zip, Web Service, DB, Questionnaire and Citrix Bridge
45.1	4	2.45.1.4.31621(3GB)	2.45.0.0.26107	2.45.1.4.31621	2.45.1.4.31599	GUI.zip, Web Service, DB, Questionnaire and Citrix Bridge
45.1	5	2.45.1.5.31773(3GB)	2.45.0.0.26107	2.45.1.5.31773	2.45.1.5.31771	GUI.zip, Web Service, DB, Questionnaire
45.1	6	2.45.1.6.32070(3GB)	2.45.0.0.26107	2.45.1.6.32070	2.45.1.6.31936	GUI.zip, Web Service, DB, Questionnaire, Citrix Bridge
45.1	7	2.45.1.6.32070(3GB)	2.45.0.0.26107	2.45.1.6.32070	2.45.1.6.31936	Web Service for Wedge only. Version number of Wedge is 45.1.6.32614
45.1	8	2.45.1.8.33254(3GB)	2.45.0.0.26107	2.45.1.6.32070	2.45.1.6.31936	GUI.zip
45.1	9	2.45.1.9.33573(3GB)	2.45.0.0.26107	2.45.1.6.32070	2.45.1.6.31936	GUI.zip
2016.1	-	2.16.1.0.33419 (3GB)	2.16.1.0.33079	2.16.1.0.33419	2.16.1.0.33416	GUI.zip, Web Service, DB, Management Reports, Questionnaire and Citrix Bridge
2016.1	.0.1	2.16.1.0.1 (3GB)	2.16.1.0.33079	2.16.1.0.33419	2.16.1.0.33416	GUI.zip (This is not included in 2016.1.1, version directly above)
2016.1	.0.2	2.16.1.0.1 (3GB)	2.16.1.0.33079	2.16.1.0.2	2.16.1.0.33416	Wedge Web Services only
2016.1	.0.3	2.16.1.0.3 (3GB)	2.16.1.0.33079	2.16.1.0.3	2.16.1.0.3.00128918	GUI.zip, Web Services and DB
<b>2016.1</b>	<b>.0.4</b>	<b>2.16.1.0.4 (3GB)</b>	<b>2.16.1.0.33079</b>	<b>2.16.1.0.4</b>	<b>2.16.1.0.3.00128918</b>	<b>GUI.zip, Web Services</b>
2016.1	1	2.16.1.1.33672 (3GB)	2.16.1.0.33079	2.16.1.0.33419	2.16.1.0.33416	GUI.zip

### Installing

#### Client/GUI

- 1) Copy and replace the current rRIS...zip file with the rRIS\_1.3.2016.1.0.4.zip file provided with this release.  
Be sure to make a backup of the ris.exe.config file contained within the current .zip folder.

#### Web Service

This update is only required for the Wedge Web Services. The Core RIS Service and Document Distribution Service are not required to be updated.

1. The web service upgrade consists of replacing the files in the RIS Web Service directory with the files supplied in the rRISService folder with this build. Always create a backup of the files being replaced. This upgrade includes 98 files in the rRISService folder and 6 sub folders. Of those folders, 1 is a folder titled “XSL” that contains a sub folder and files within the subfolder. Another folder is titled “**deploy**” that contains the new .config files that will be deployed with the user of the file called “ServicesConfigWizard.exe” (see instructions below). Folders are (Arabic), he (Hebrew), and pt\_BR (Brazilian Portuguese) are localization folders. The WedgePlugins folder contains various plugin files for RADAR, MIRTH, Ensemble, etc...

#### Services Configuration Wizard

With the release of 4.2 to decrease the chance of losing configuration settings and missing new configuration options, we will no longer include the configuration files in the release in the main set of files, but they will now exist in a “deploy” folder, which will contain the three site configurable config files; applicationsettings, connectionstrings, and services as well as a copy of the rRISServices.exe configuration file. The contents of this folder should not be required to be touched.

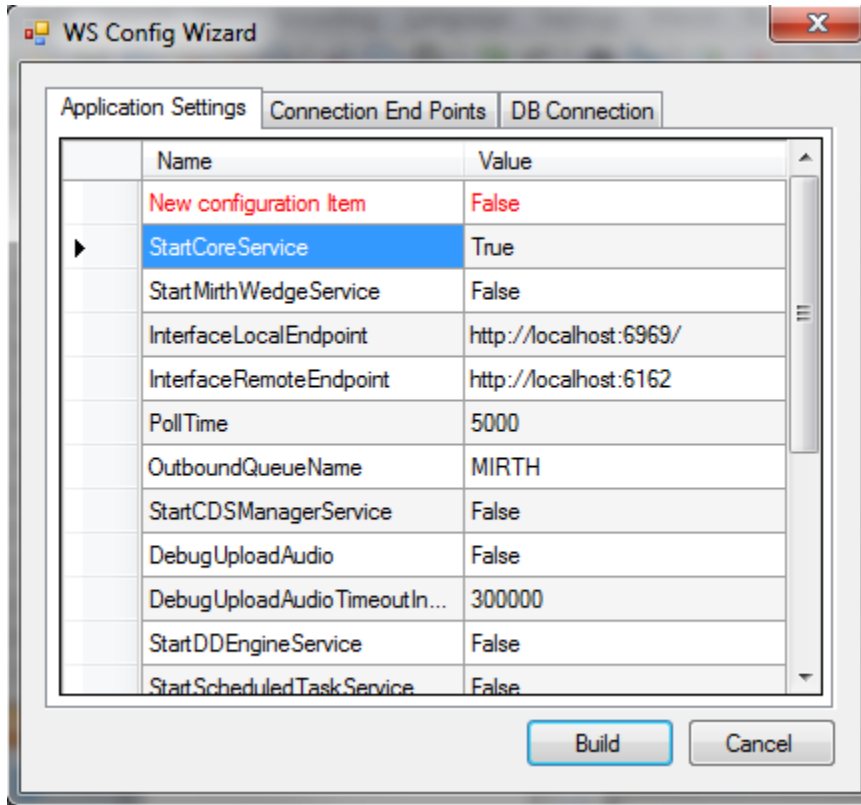
On the install of a new service, all files will be copied to the appropriate locations on the server (no configurations will be overwritten). If instructed or to confirm no new configurations have been added the user can run the new application “ServicesConfigWizard.exe”

This application will read the existing configuration file(s) (if files exist), and compare to the provided new configuration files then will display three tabs, for each configuration file:

**Application Settings:** all existing configuration values will be displayed, if there are any new configuration entries they will be displayed in red.

## eRAD RIS Server Update

**NOTE:** the rRISServices.exe.config file is also included in the deploy folder. If this file has changes it **will not** update your current file in the Web Service directory. Any changes to this file will require a manual update of the rRISServices.exe.config and rRISServicesx64.exe.config files.





## eRAD RIS Server Update

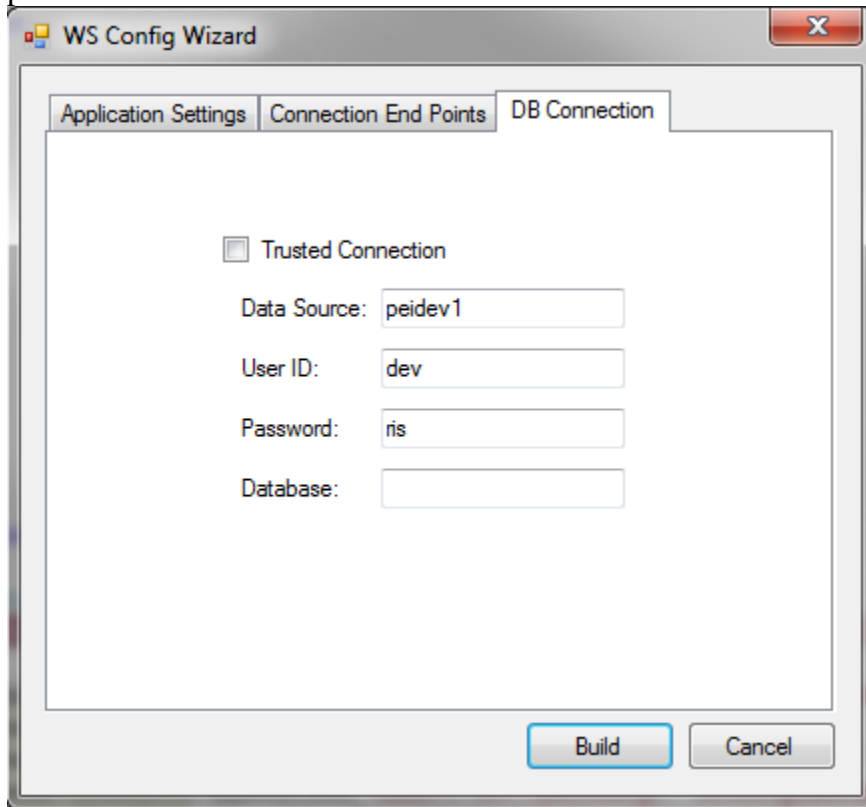
**Connection End Points:** will display the existing configuration, if the value is left blank then that entry will not be created, in the case of “Study Service” or “CDS Service” if both http and net.tcp were not provided then that endpoint will not be created at all.

The screenshot shows a Windows-style dialog box titled "WS Config Wizard" with a close button (X) in the top right corner. The dialog has three tabs: "Application Settings", "Connection End Points" (which is selected), and "DB Connection". The "Connection End Points" tab contains three sections, each with a radio button and a label: "Study Service", "Notify Service", and "CDS Service". Each section contains two rows of input fields. The "Study Service" section has "http://" and "net.tcp://" labels, with "localhost:8040" and "localhost:8041" in the first field, and "/rRIS/" in the second field. The "Notify Service" section has a "net.tcp://" label, with "localhost:7095" in the first field and "/rRIS/" in the second field. The "CDS Service" section has "http://" and "net.tcp://" labels, with "localhost:7092" and "localhost:7093" in the first field, and "/rRIS/" in the second field. At the bottom right of the dialog are two buttons: "Build" and "Cancel".

Service	Protocol	Host/Port	Path
Study Service	http://	localhost:8040	/rRIS/
	net.tcp://	localhost:8041	/rRIS/
Notify Service	net.tcp://	localhost:7095	/rRIS/
CDS Service	http://	localhost:7092	/rRIS/
	net.tcp://	localhost:7093	/rRIS/

## **eRAD RIS Server Update**

**DB Connection:** will display the existing configuration, if the Connection is to be used as a trusted connection, then the user ID and password will become disabled and will not be used, and will rely on the provided database value, When not using the trusted connection, The Database value is not needed but can be used to force a specific database connection as long as the provided user has access to that database.



It is always good practice to do a compare of the .config files.

- 1) Stop each service listed below. Copy the files from the RIS Service Updates folder to the directory for each rRISService.

*rRISService directories include:*

- a) *rRISService*
- b) *CDS rRISService*
- c) *Wedge rRISService*
- d) *DDE rRISService*

**Restart each service.**