

# Server Update

For eRAD RIS  
Version 2.0  
Build 43  
Update 43.0.3.1

## **Table of Contents**

1. Defects Resolved .....	3
2. Code Stream.....	4
3. Package Contents .....	5
4. Intended Audience .....	5
5. Who is affected .....	5
6. eRAD RIS Release Version Numbers .....	6
7. Installing .....	7

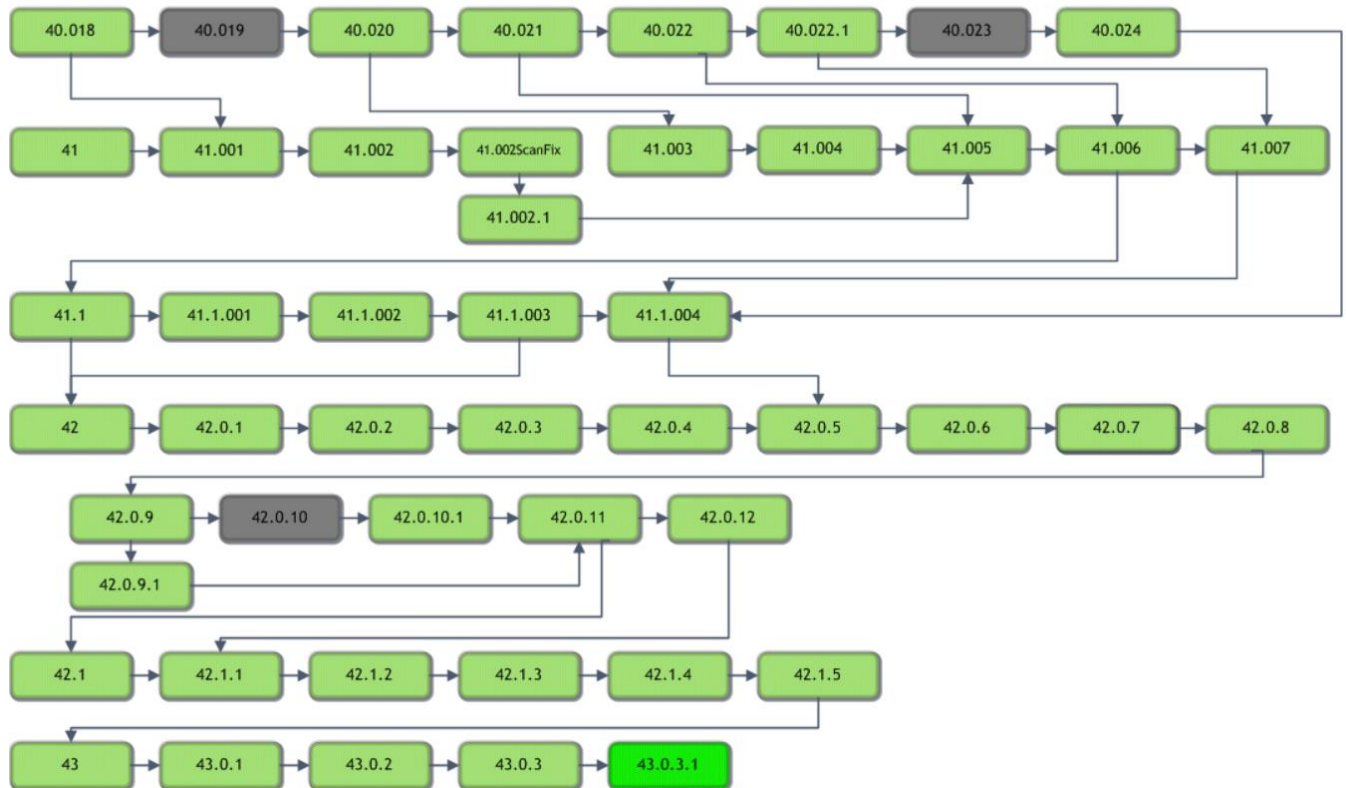
## **eRAD RIS Server Update**

### **1. Defects Resolved**

Redmine #	Tracker	Subject	Priority
7436	Bug	Prior Report button no longer visible on the schedule order screen for a mammo follow-up order	Urgent
7363	Bug	Precert behaviour has changed. Must save the study twice from IVT for to be removed from work list	Normal

### 2. Code Stream

#### eRAD RIS - Source Code Evolution



#### **Legend:**

Light Green = Released software

Gray = Will not be released

Bright Green = Current Release

### **3. Package Contents**

Files included for this server update:

- 1) GUI ZIP Updates folder contains:
  - rRIS\_1.3.43.0.3.1.24450.zip
  
- 2) SQL Folder contains:
  - B43.0.3.1.sql

### **4. Intended Audience**

This document is created by the RIS Development team for the RadNet/eRAD RIS Implementation teams.

### **5. Who is affected**

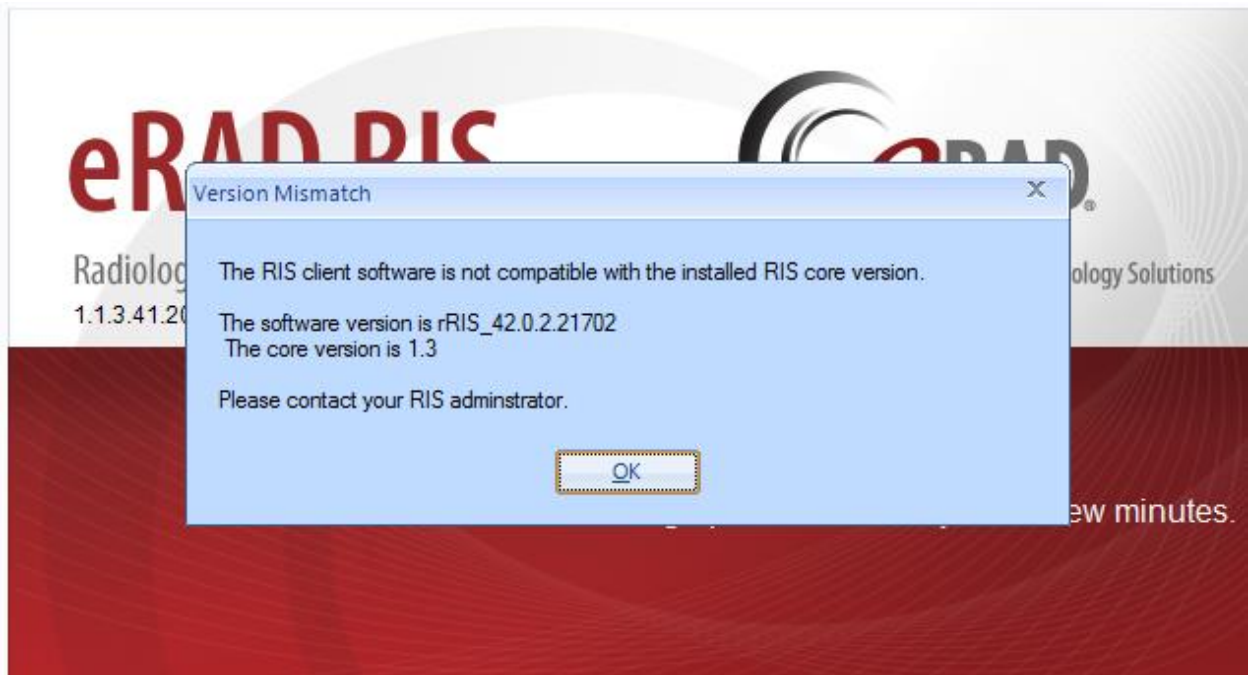
Build 43 installs. Server updates are not cumulative. This server update must be applied to 43.0.3

**6. eRAD RIS Release Version Numbers**

Build	Patch	UI Version	Core Version	WS Version	DB Version	Notes
42	-	2.42.0.0.21261(3GB)	2.42.0.0.21261	2.42.0.0.21261	2.42.0.0.21187	Full version release
42	1	2.42.0.1.21597	2.42.0.0.21261	2.42.0.1.21597	2.42.0.0.21187	GUI and Web Service updates
42	2	2.42.0.2.21702	2.42.0.0.21261	2.42.0.2.21702	2.42.0.0.21187	GUI and Web Service updates
42	3	2.42.0.2.21806	2.42.0.0.21261	2.42.0.2.21806	2.42.0.0.21187	GUI and Web Service updates
42	4	2.42.0.2.21862	2.42.0.0.21261	2.42.0.2.21806	2.42.0.4.21870	GUI and Database updates
42	5	2.42.0.5.21924	2.42.0.0.21261	2.42.0.2.21806	2.42.0.4.21870	GUI
42	6	2.42.0.5.22009	2.42.0.0.21261	2.42.0.5.22009	2.42.0.4.21870	GUI and Web Service updates
42	7	2.42.0.7.22090	2.42.0.0.21261	2.42.0.6.22009	2.42.0.4.21870	GUI.zip updates
42	8	2.42.0.7.22090	2.42.0.7.22150	2.42.0.6.22009	2.42.0.4.21870	Web Service updates
42	9	2.42.0.9.22203	2.42.0.0.21261	2.42.0.9.22203	2.42.0.4.21870	GUI and Web Service updates
42	9.1	2.42.0.9.22203	2.42.0.0.21261	2.42.0.9.22203	2.42.0.4.21870	Web Service updates
42	10	2.42.0.10.22232	2.42.0.0.21261	2.42.0.9.22203	2.42.0.4.21870	GUI.zip
42	10.1	2.42.0.10.22420	2.42.0.0.21261	2.42.0.9.22203	2.42.0.4.21870	GUI.zip updates
42	11	2.42.0.11.22495a	2.42.0.0.21261	2.42.0.11.22471	2.42.0.11.22527	GUI.zip, Web Service, Database updates. Management Report Deployment
42	12	2.42.0.12.22982	2.42.0.0.21261	2.42.0.12.22982	2.42.0.12.22911	GUI.zip, Web Service, Database updates.
42.1	-	2.42.1.0.22744(3GB)	2.42.0.0.21261	2.42.1.0.22744	2.42.1.0.22736	GUI.zip, Web Service, DB updates and Management Report Deployment
42.1	1	2.42.1.1.2296(3GB)	2.42.0.0.21261	2.42.1.1.22963	2.42.1.1.22864	GUI.zip, Web Service, DB updates
42.1	2	2.42.1.2.23007(3GB)	2.42.0.0.21261	2.42.1.2.23007	2.42.1.2.23007	GUI.zip, Web Service, DB updates
42.1	3	2.42.1.2.23237(3GB)	2.42.0.0.21261	2.42.1.2.23237	2.42.1.2.23007	GUI.zip, Web Services
42.1	4	2.42.1.4.23348(3GB)	2.42.0.0.21261	2.42.1.4.23348	2.42.1.2.23007	GUI.zip, Web Services
42.1	5	2.42.1.5.23406(3GB)	2.42.0.0.21261	2.42.1.5.23406	2.42.1.2.23007	GUI.zip, Web Services
43	-	2.43.0.0.23715(3GB)	2.43.0.0.23171	2.43.0.0.23715	2.43.0.0.23743	Full Version Release
43	1	2.43.0.1.23798(3GB)	2.43.0.0.23171	2.43.0.1.23798	2.43.0.1.23770	GUI.zip, Web Service, DB updates
43	2	2.43.0.2.24017(3GB)	2.43.0.0.23171	2.43.0.2.24017	2.43.0.2.24023	GUI.zip, Web Service, DB updates and Management Report Deployment
43	3	2.43.0.3.24298(3GB)	2.43.0.0.23171	2.43.0.3.24298	2.43.0.3.24283	GUI.zip, Web Service, DB updates and Management Report Deployment
<b>43</b>	<b>3.1</b>	<b>2.43.0.3.24450(3GB)</b>	<b>2.43.0.0.23171</b>	<b>2.43.0.3.24298</b>	<b>2.43.0.3.24421</b>	<b>GUI.zip, and DB updates</b>

### 7. Installing

- 1) Copy and replace the current rRIS...zip file with the rRIS\_1.3.43.0.3.24450.zip file provided with this release.  
Be sure to make a backup of the ris.exe.config file contained within the current .zip folder.



If you receive the Version Mismatch error above the GUI.zip will need to be renamed to add 1.3. to it. The GUI.zip file name change is from rRIS\_43.0..3.24450→ rRIS\_1.3.43.0.3. 24450

NOTE: the GUI.zip included with this release has already been renamed to include 1.3.

This is required for installs that have not reached build 42. Because the software installed on your local workstation is a pre-42 build it detects a version mismatch in the software naming and won't allow the newest build to be launched (it is looking for 1.3. in the name). Once the workstation(s) have reached a build of 42 we will no longer need to add "1.3." to the GUI.zip name. Also note that a core install will not resolve this issue below.

**NOTE:** If your upgrade is coming from 40.016.1 or prior a core install will be required. Versions (builds) of 40.017 and greater do not require a core install as long as you are at least at 40.017 (Core Version 1.3.40.18756)

## **eRAD RIS Server Update**

- 2) Run the B43.0.3.1.sql file against the eRAD RIS database instance.