

# Server Update

For eRAD RIS  
Version 2.0  
Build 43  
Update 43.0.14

## **Table of Contents**

1. Defects Resolved .....	3
2. Code Stream.....	4
3. Package Contents .....	5
4. Intended Audience .....	5
5. Who is affected .....	5
6. eRAD RIS Release Version Numbers .....	6
7. Installing .....	7

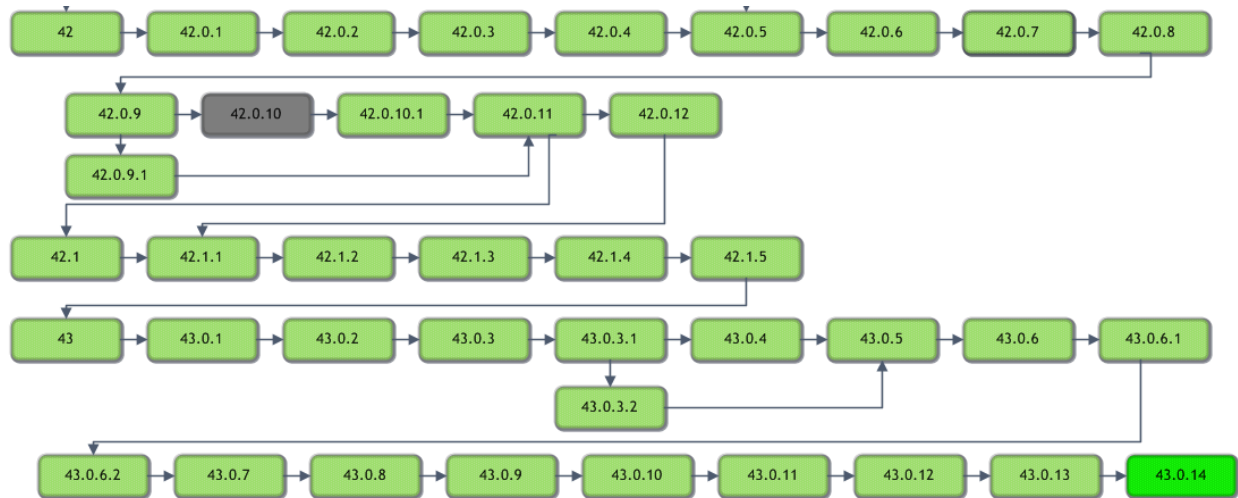
## **eRAD RIS Server Update**

### **1. Defects Resolved**

Redmine #	Tracker	Subject	Priority
7985	Bug	PowerScribe Integration - exception message when trying to open a study	High
8011	Bug	Carestream PACS integration Read Only mode issue	Urgent

## eRAD RIS Server Update

### 2. Code Stream



#### Legend:

Light Green = Released software

Gray = Will not be released

Bright Green = Current Release

## **eRAD RIS Server Update**

### **3. Package Contents**

Files included for this server update:

- 1) GUI ZIP Updates folder contains:
  - rRIS\_1.3.43.0.14.25644.zip

### **4. Intended Audience**

This document is created by the RIS Development team for the RadNet/eRAD RIS Implementation teams.

### **5. Who is affected**

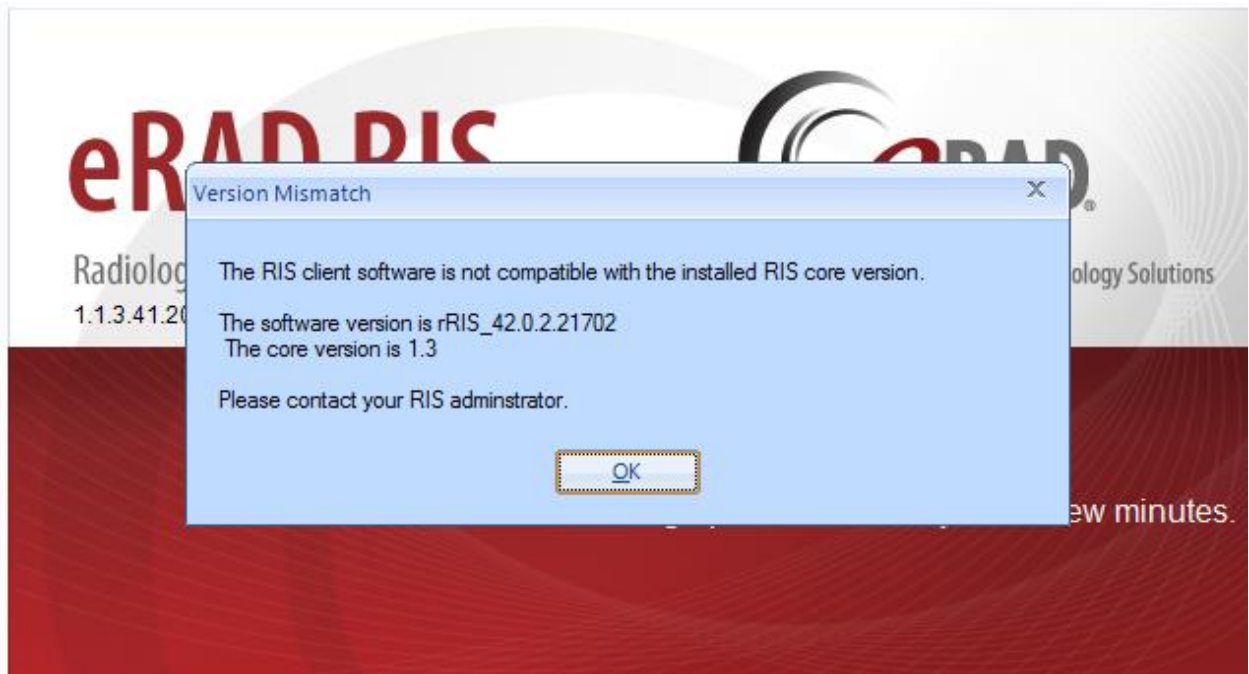
Build 43 installs. Server updates are not cumulative. This server update must be applied to 43.0.13

**6. eRAD RIS Release Version Numbers**

Build	Patch	UI Version	Core Version	WS Version	DB Version	Notes
42.1	-	2.42.1.0.22744(3GB)	2.42.0.0.21261	2.42.1.0.22744	2.42.1.0.22736	GUI.zip, Web Service, DB updates and Management Report Deployment
42.1	1	2.42.1.1.2296(3GB)	2.42.0.0.21261	2.42.1.1.22963	2.42.1.1.22864	GUI.zip, Web Service, DB updates
42.1	2	2.42.1.2.23007(3GB)	2.42.0.0.21261	2.42.1.2.23007	2.42.1.2.23007	GUI.zip, Web Service, DB updates
42.1	3	2.42.1.2.23237(3GB)	2.42.0.0.21261	2.42.1.2.23237	2.42.1.2.23007	GUI.zip, Web Services
42.1	4	2.42.1.4.23348(3GB)	2.42.0.0.21261	2.42.1.4.23348	2.42.1.2.23007	GUI.zip, Web Services
42.1	5	2.42.1.5.23406(3GB)	2.42.0.0.21261	2.42.1.5.23406	2.42.1.2.23007	GUI.zip, Web Services
43	-	2.43.0.0.23715(3GB)	2.43.0.0.23171	2.43.0.0.23715	2.43.0.0.23743	Full Version Release
43	1	2.43.0.1.23798(3GB)	2.43.0.0.23171	2.43.0.1.23798	2.43.0.1.23770	GUI.zip, Web Service, DB updates
43	2	2.43.0.2.24017(3GB)	2.43.0.0.23171	2.43.0.2.24017	2.43.0.2.24023	GUI.zip, Web Service, DB updates and Management Report Deployment
43	3	2.43.0.3.24298(3GB)	2.43.0.0.23171	2.43.0.3.24298	2.43.0.3.24283	GUI.zip, Web Service, DB updates and Management Report Deployment
43	3.1	2.43.0.3.24450(3GB)	2.43.0.0.23171	2.43.0.3.24298	2.43.0.3.24421	GUI.zip and DB updates
43	3.2	2.43.0.3.24450(3GB)	2.43.0.0.23171	2.43.0.3.24298	2.43.0.3.24421a	DB updates
43	4	2.43.0.4.24447(3GB)	2.43.0.0.23171	2.43.0.4.24447	2.43.0.4.24442	GUI.zip, Web Service, DB updates and Management Report Deployment
43	5	2.43.0.5.24632(3GB)	2.43.0.0.23171	2.43.0.5.24632	2.43.0.5.24560	GUI.zip, Web Service and DB updates
43	6	2.43.0.6.24914(3GB)	2.43.0.0.23171	2.43.0.6.24914	2.43.0.6.24914	GUI.zip, Web Service and DB updates
43	6.1	2.43.0.6.24937(3GB)	2.43.0.0.23171	2.43.0.6.24937	2.43.0.6.24914	GUI.zip, Web Service
43	6.2	2.43.0.6.24970(3GB)	2.43.0.0.23171	2.43.0.6.24970	2.43.0.6.24914	GUI.zip, Web Service
43	7	2.43.0.7.25258(3GB)	2.43.0.0.23171	2.43.0.7.25258	2.43.0.7.25226	GUI.zip, Web Service, DB updates and Management Report Deployment
43	8	2.43.0.8.25440(3GB)	2.43.0.0.23171	2.43.0.8.25440	2.43.0.8.25425	GUI.zip, Web Service, DB updates and Management Report Deployment
43	9	2.43.0.9.25477(3GB)	2.43.0.0.23171	2.43.0.9.25477	2.43.0.8.25425	GUI.zip and Web Service
43	10	2.43.0.9.25477(3GB)	2.43.0.0.23171	2.43.0.10.25477	2.43.0.8.25425	Web Service
43	11	2.43.0.11.25512(3GB)	2.43.0.0.23171	2.43.0.11.25512	2.43.0.8.25425	GUI.zip and Web Service
43	12	2.43.0.12.25554(3GB)	2.43.0.0.23171	2.43.0.12.25554	2.43.0.12.25536	GUI.zip Web Service and DB Updates
43	13	2.43.0.13.25610(3GB)	2.43.0.0.23171	2.43.0.13.25610	2.43.0.12.25536	GUI.zip and Web Service
<b>43</b>	<b>14</b>	<b>2.43.0.14.25644(3GB)</b>	<b>2.43.0.0.23171</b>	<b>2.43.0.13.25610</b>	<b>2.43.0.12.25536</b>	<b>GUI.zip</b>

### 7. Installing

- 1) Copy and replace the current rRIS...zip file with the rRIS\_1.3.43.0.14.25644.zip file provided with this release.  
Be sure to make a backup of the ris.exe.config file contained within the current .zip folder.



If you receive the Version Mismatch error above the GUI.zip will need to be renamed to add 1.3. to it. The GUI.zip file name change is from rRIS\_43.0.14.25644 → rRIS\_1.3.43.0.14.25644

NOTE: the GUI.zip included with this release has already been renamed to include 1.3.

This is required for installs that have not reached build 42. Because the software installed on your local workstation is a pre-42 build it detects a version mismatch in the software naming and won't allow the newest build to be launched (it is looking for 1.3. in the name). Once the workstation(s) have reached a build of 42 we will no longer need to add "1.3." to the GUI.zip name. Also note that a core install will not resolve this issue below.

**NOTE:** If your upgrade is coming from 40.016.1 or prior a core install will be required. Versions (builds) of 40.017 and greater do not require a core install as long as you are at least at 40.017 (Core Version 1.3.40.18756)