

Server Update

For eRAD RIS
Version 2.0
Build 43
Update 43.0.4

Table of Contents

1. Defects Resolved	3
2. Changes to Configuration	5
3. Code Stream.....	6
4. Package Contents	7
5. Intended Audience	10
6. Who is affected	10
7. eRAD RIS Release Version Numbers	11
8. Installing	12

eRAD RIS Server Update

1. Defects Resolved

Redmine #	Tracker	Subject	Priority
6912	Bug	EMR patient Merge.	Urgent
7089	Bug	HL7 merge allows the destination and source patient to be the same	Urgent
7438	Bug	Prior Report button no longer visible on the schedule order screen for a mammo follow-up order	Urgent
7008	Bug	IVT WL Counts are off when filters are added	High
7140	Bug	Message contents sent from portal are not kept	High
7208	Bug	Chair selection dialog opens with incorrect selection options and on every launch of pending dictation worklist - resulting in duplicate dialogs possible.	High
7277	Bug	Cannot access a disposed object. Object Name: RadGridView	High
7283	Bug	IVT Information entered outside of the IVT screen does not save.	High
7328	Bug	Personnel - Internal Notes field not displaying	High
6930	Bug	EMR Patient Merge (HL7 from eRAD)	Normal
6937	Bug	EMR merge issue - both alternative IDs remain active	Normal
6971	Bug	EMR merge erad patient into EMR patient	Normal
7007	Bug	EMR patient merge (remains on merge request WL)	Normal
7041	Bug	patient portal - no guarantee that the patient is presented with updated terms for a practice	Normal
7049	Bug	Error manually changing status	Normal
7063	Bug	Patient Portal - Visit summary page - there is text overwriting text	Normal
7167	Bug	Mgmt Report - Mammography Missing Data	Normal
7172	Bug	Reconcile Form - Issue with layout of Order and Scheduling Notes	Normal
7179	Bug	County/ZIP - possible wrong county selecting automatically. County drop down changing when nulling out ZIP textbox	Normal
7181	Bug	County/ZIP - county getting saved with data but dialog doesn't show one selected	Normal
7202	Bug	ICD - minimized dictation mode needs a smaller ICD icon	Normal
7223	Bug	CD Import- practice is assigned using the OrgManager instead of the selected site's practice	Normal
7246	Bug	setting up user for domain authentication - RIS still prompts for	Normal

eRAD RIS Server Update

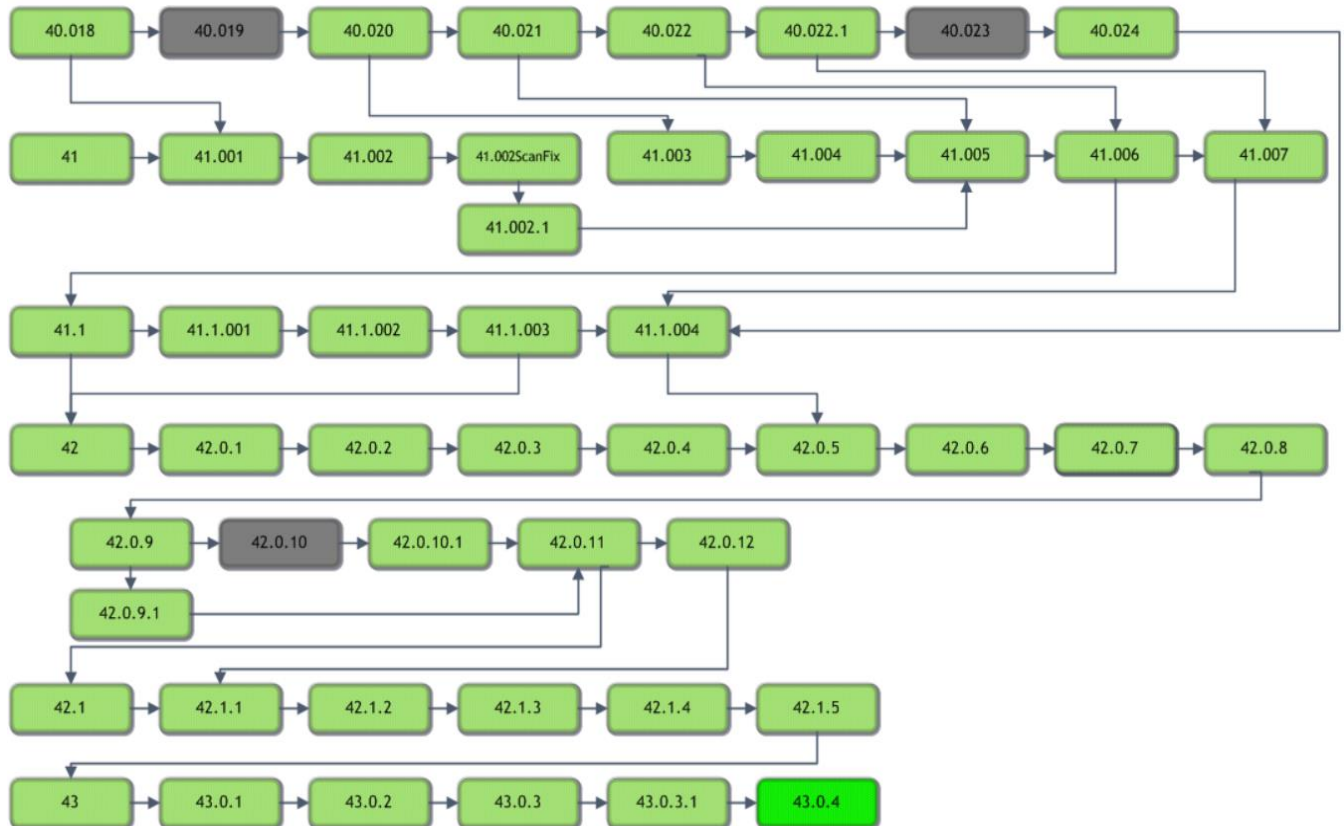
		a password	
7260	Bug	The INSERT statement conflicted with the Foreign key constraint "fk_c_scan_document_association_c_study" when rescheduling	Normal
7269	Bug	County selection with no chair - should not prompt users if they have ever selected a county on that work station	Normal
7321	Bug	ICD codes are unable to copy from the Search Grid	Normal
7397	Bug	Amount to collect is not cleared when changing site selection from site NPD enabled to site that is not	Normal
7408	Bug	Insurance Eligibility Details report hyperlink passing incorrect data to patient search	Normal
7412	Bug	Exam Search Date Range criteria does not work properly for named date ranges	Normal
7415	Bug	RISService does not scale up quickly if a lot of requests arrive simultaneously -- make min threads configurable	Normal
7437	Bug	Precert behaviour has changed. Must save the study twice from IVT for to be removed from work list	Normal
7379	Bug	Insurance Eligibility - Non URL characters entered into the policy number field causes an error	Low

2. Changes to Configuration

Setting Placeholder	Setting	Default	Purpose / Controls Access to
Applicationsettings.config file	<pre></setting> <setting name="CoreServiceMinIOThreads" serializeAs="String"> <value>-1</value> </setting></pre>	-1	The default value of -1 will keep the value as it currently is (before this patch) using the number of CPU's on the server. If there are 4 CPU's there will be 4 threads. Increasing the value will set the minimum IO threads.
Applicationsettings.config file	<pre><setting name="CoreServiceMinWorkerThreads" serializeAs="String"> <value>-1</value> </setting></pre>	-1	The default value of -1 will keep the value as it currently is (before this patch) using the number of CPU's on the server. If there are 4 CPU's there will be 4 threads. Increasing the value will set the minimum worker threads.

3. Code Stream

eRAD RIS - Source Code Evolution



Legend:

Light Green = Released software

Gray = Will not be released

Bright Green = Current Release

4. Package Contents

Files included for this server update:

1) GUI ZIP Updates folder contains:

- rRIS_1.3.43.0.3.24447.zip

2) RIS_Service_Updates contains:

ABCpdf.dll	Radar.DirectMessaging.Model.dll
ABCpdf9-32.dll	Radar.DirectMessaging.Model.pdb
ABCpdf9-64.dll	rRISServices.exe
Antlr3.Runtime.dll	rRISServices.pdb
CDSJobManager.dll	rRISServicesx64.exe
CDSJobManager.pdb	ScheduledTaskManager.dll
CdsLib.dll	ScheduledTaskManager.pdb
CdsLib.xml	ServicesConfigWizard.exe
CdsLib.XmlSerializers.dll	ServicesConfigWizard.pdb
CommonLib.dll	SignatureApprovalService.exe
CommonLib.pdb	SignatureApprovalService.pdb
contents.txt	System.Net.Http.dll
DDEngine.dll	System.Net.Http.Formatting.dll
DDEngine.pdb	System.Net.Http.xml
DiffPlex.dll	System.Web.Http.dll
Interop.ANYMODALCAPTURECTRLLib.dll	System.Web.Http.SelfHost.dll
Interop.FAXCOMEXLib.dll	System.Web.Http.SelfHost.xml
Microsoft.Practices.EnterpriseLibrary.Caching.dll	System.Web.Http.WebHost.dll
Microsoft.Practices.EnterpriseLibrary.Caching.pdb	System.Web.Http.WebHost.xml
Microsoft.Practices.EnterpriseLibrary.Common.dll	System.Web.Http.xml
Microsoft.Practices.EnterpriseLibrary.Common.pdb	System.Web.Mvc.dll
Microsoft.Practices.EnterpriseLibrary.Logging.dll	System.Web.Mvc.xml
Microsoft.Practices.EnterpriseLibrary.Logging.pdb	System.Web.Optimization.dll
Microsoft.Practices.ServiceLocation.dll	System.Web.Razor.dll
Microsoft.Practices.ServiceLocation.pdb	System.Web.Razor.xml
Microsoft.Practices.Unity.dll	System.Web.WebPages.Deployment.dll
Microsoft.Practices.Unity.Interception.dll	System.Web.WebPages.Deployment.xml
Microsoft.Practices.Unity.Interception.pdb	System.Web.WebPages.dll
Microsoft.Practices.Unity.pdb	System.Web.WebPages.Razor.dll
Microsoft.ReportViewer.Common.dll	System.Web.WebPages.Razor.xml
Microsoft.ReportViewer.WinForms.dll	System.Web.WebPages.xml
Microsoft.ReportViewer.WinForms.xml	Tourreau.Gilles.FaxDotNet.dll
Newtonsoft.Json.dll	Tourreau.Gilles.FaxDotNet.pdb
Newtonsoft.Json.xml	Tourreau.Gilles.FaxDotNet.xml
NLog.dll	WCFSservice.dll
O2S.Components.PDFRender4NET.dll	WCFSservice.pdb
PDFToImages.exe	WCFSserviceTests.dll
Radar.Common.dll	WCFSserviceTests.pdb
Radar.Common.pdb	WebApi.dll
Radar.Common.WebClient.dll	WebApi.pdb
Radar.Common.WebClient.pdb	WebGrease.dll
Radar.DirectMessaging.Client.dll	Wedge.exe
Radar.DirectMessaging.Client.pdb	Wedge.pdb

eRAD RIS Server Update

The rRIS_Service_Updates also contains to subfolders:

- A. Deploy folder contains
 - a. Applicationsettings.config
 - b. ReleaseVersion-connectionstrings.config
 - c. rRISServices.exe.config
 - d. services.config
- B. XSL subfolder contains:
 - a. Subfolder titled “Stylesheets” which contains:
 - a. CDAToHTMLCompleteReport.xslt
 - b. CDAToHTMLCompleteReportDark.xslt
 - c. CDAToHTMLImpressionSection.xslt
 - d. CDAToRIS.xslt
 - e. CDAToTxt.xslt
 - f. DocumentModelReport.xslt
 - g. DocumentModelReportAsXml.xslt
 - b. CDA Subfolder contains

a. C-CDA.xsl	n. sectionInstructions.xsl
b. eRadStylesheet.xsl	o. sectionMedications.xsl
c. generalTemplates.xsl	p. sectionPlanOfCare.xsl
d. header.xsl	q. sectionProblemList.xsl
e. QRDA.xsl	r. sectionProcedures.xsl
f. QrdaLevel3_Cypress2.4.0.xsl	s. sectionQRDAMEasures.xsl
g. QrdaLevel3_ViewHtml.xsl	t. sectionQRDAPatientData.xsl
h. sectionAdministeredMedications.xsl	u. sectionQRDAREporting.xsl
i. sectionAllergies.xsl	v. sectionReasonForVisit.xsl
j. sectionEncounters.xsl	w. sectionResults.xsl
k. sectionFindings.xsl	x. sectionSocialHistory.xsl
l. sectionFuncCogStatus.xsl	y. sectionVitalSigns.xsl
m. sectionImmunizations.xsl	

3) SQL Folder contains:

- B43.0.4.sql

4) **SSRSDeployment** folder contains 7 subfolders, a batch file for deploying the reports and a help file for deploying the reports.

4.1. **Backups** folder is empty

4.2. **Fonts** folder contains 4 files:

- 4.1.1. FRE3OF9X
- 4.1.2 FRE3OF9x_0
- 4.1.3 FREE3OF9
- 4.1.4 FREE3OF9_0

eRAD RIS Server Update

- 4.3. **ParentFolder** folder contains 7 subfolders
 - 4.3.1. **Chair** folder contains 1 .rdl file
 - 4.3.2. **Dashboards** folder contains 9 .rdl files
 - 4.3.3. **Forms folder** contains sub folder and 2 .rdl files
 - 4.3.3.1. **SubReports** contains 10 .rdl files
 - 4.3.4. **Management Reports** folder contains 9 sub folders, these subfolders contain the core management report files (.rdl) to be deployed.
 - 4.3.5. **Marketing** folder contains 5 .rdl files
 - 4.3.6. **Order Templates** contains 1 file (Default.rdl)
 - 4.3.7. **SubReports** contains 12.rdl files
 - 4.3.8. **Verbal Order** contains 4 .rdl files
- 4.4. **Scripts** folder contains 9 .rss files. These files are used with the DeployReports.bat utility to deploy the reports.
- 4.5. **Upload Custom Mangement Reports** is empty
- 4.6. **Upload Diagnostic Templates** folder contains 1 subfolder
 - 4.6.1. **SubReports** folder is empty
- 4.7. **Upload Forms** folder contains 1 subfolder.
 - 4.7.1. **SubReports** folder is empty
- 4.8. **eRADDeployReports.bat** - batch file for deploying reports to report server for eRAD customers
- 4.9. **RadnetDeployReports.bat** - batch file for deploying reports to report sever for RadNet
- 4.10. **Adding reports for Deployment.docx** document to assist in added a report to the install process when deploying the reports.

5. Intended Audience

This document is created by the RIS Development team for the RadNet/eRAD RIS Implementation teams.

6. Who is affected

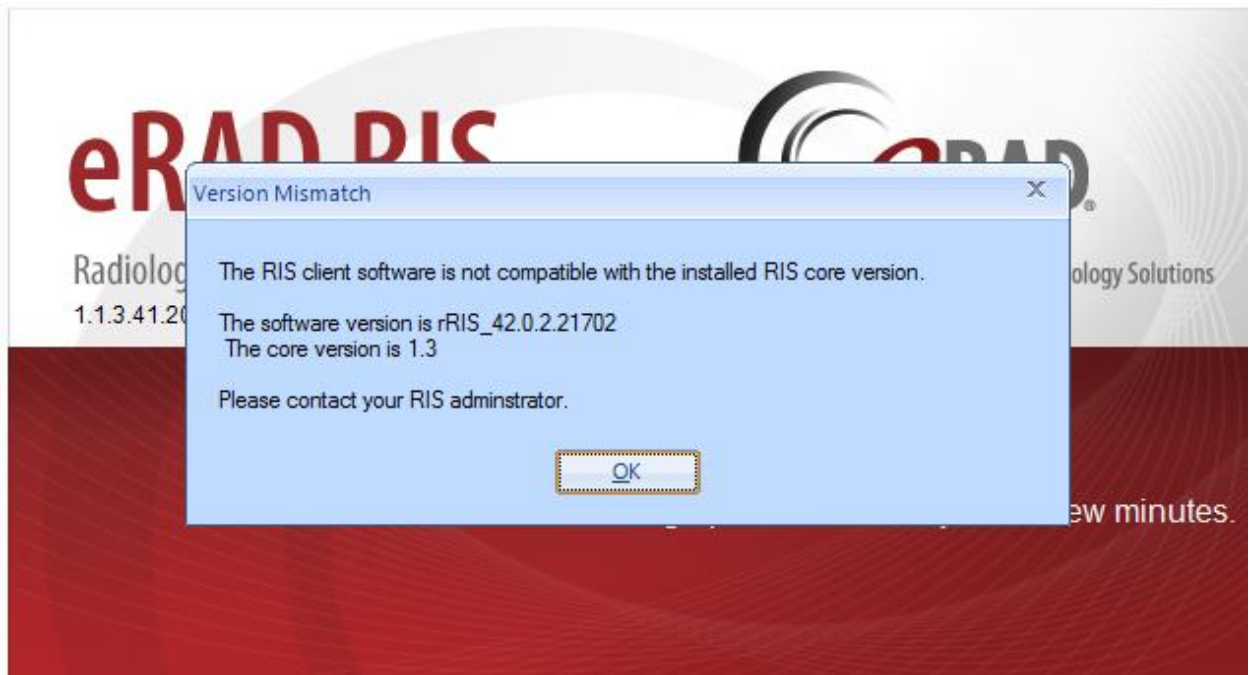
Build 43 installs. Server updates are not cumulative. This server update must be applied to 43.0.3.1

7. eRAD RIS Release Version Numbers

Build	Patch	UI Version	Core Version	WS Version	DB Version	Notes
42	-	2.42.0.0.21261(3GB)	2.42.0.0.21261	2.42.0.0.21261	2.42.0.0.21187	Full version release
42	1	2.42.0.1.21597	2.42.0.0.21261	2.42.0.1.21597	2.42.0.0.21187	GUI and Web Service updates
42	2	2.42.0.2.21702	2.42.0.0.21261	2.42.0.2.21702	2.42.0.0.21187	GUI and Web Service updates
42	3	2.42.0.2.21806	2.42.0.0.21261	2.42.0.2.21806	2.42.0.0.21187	GUI and Web Service updates
42	4	2.42.0.2.21862	2.42.0.0.21261	2.42.0.2.21806	2.42.0.4.21870	GUI and Database updates
42	5	2.42.0.5.21924	2.42.0.0.21261	2.42.0.2.21806	2.42.0.4.21870	GUI
42	6	2.42.0.5.22009	2.42.0.0.21261	2.42.0.5.22009	2.42.0.4.21870	GUI and Web Service updates
42	7	2.42.0.7.22090	2.42.0.0.21261	2.42.0.6.22009	2.42.0.4.21870	GUI.zip updates
42	8	2.42.0.7.22090	2.42.0.7.22150	2.42.0.6.22009	2.42.0.4.21870	Web Service updates
42	9	2.42.0.9.22203	2.42.0.0.21261	2.42.0.9.22203	2.42.0.4.21870	GUI and Web Service updates
42	9.1	2.42.0.9.22203	2.42.0.0.21261	2.42.0.9.22203	2.42.0.4.21870	Web Service updates
42	10	2.42.0.10.22232	2.42.0.0.21261	2.42.0.9.22203	2.42.0.4.21870	GUI.zip
42	10.1	2.42.0.10.22420	2.42.0.0.21261	2.42.0.9.22203	2.42.0.4.21870	GUI.zip updates
42	11	2.42.0.11.22495a	2.42.0.0.21261	2.42.0.11.22471	2.42.0.11.22527	GUI.zip, Web Service, Database updates. Management Report Deployment
42	12	2.42.0.12.22982	2.42.0.0.21261	2.42.0.12.22982	2.42.0.12.22911	GUI.zip, Web Service, Database updates.
42.1	-	2.42.1.0.22744(3GB)	2.42.0.0.21261	2.42.1.0.22744	2.42.1.0.22736	GUI.zip, Web Service, DB updates and Management Report Deployment
42.1	1	2.42.1.1.2296(3GB)	2.42.0.0.21261	2.42.1.1.22963	2.42.1.1.22864	GUI.zip, Web Service, DB updates
42.1	2	2.42.1.2.23007(3GB)	2.42.0.0.21261	2.42.1.2.23007	2.42.1.2.23007	GUI.zip, Web Service, DB updates
42.1	3	2.42.1.2.23237(3GB)	2.42.0.0.21261	2.42.1.2.23237	2.42.1.2.23007	GUI.zip, Web Services
42.1	4	2.42.1.4.23348(3GB)	2.42.0.0.21261	2.42.1.4.23348	2.42.1.2.23007	GUI.zip, Web Services
42.1	5	2.42.1.5.23406(3GB)	2.42.0.0.21261	2.42.1.5.23406	2.42.1.2.23007	GUI.zip, Web Services
43	-	2.43.0.0.23715(3GB)	2.43.0.0.23171	2.43.0.0.23715	2.43.0.0.23743	Full Version Release
43	1	2.43.0.1.23798(3GB)	2.43.0.0.23171	2.43.0.1.23798	2.43.0.1.23770	GUI.zip, Web Service, DB updates
43	2	2.43.0.2.24017(3GB)	2.43.0.0.23171	2.43.0.2.24017	2.43.0.2.24023	GUI.zip, Web Service, DB updates and Management Report Deployment
43	3	2.43.0.3.24298(3GB)	2.43.0.0.23171	2.43.0.3.24298	2.43.0.3.24283	GUI.zip, Web Service, DB updates and Management Report Deployment
43	3.1	2.43.0.3.24450(3GB)	2.43.0.0.23171	2.43.0.3.24298	2.43.0.3.24421	GUI.zip and DB updates
43	4	2.43.0.4.24447(3GB)	2.43.0.0.23171	2.43.0.4.24447	2.43.0.4.24442	GUI.zip, Web Service, DB updates and Management Report Deployment

8. Installing

- 1) Copy and replace the current rRIS...zip file with the rRIS_1.3.43.0.3.24447.zip file provided with this release.
Be sure to make a backup of the ris.exe.config file contained within the current .zip folder.



If you receive the Version Mismatch error above the GUI.zip will need to be renamed to add 1.3. to it. The GUI.zip file name change is from rRIS_43.0..3.24447→ rRIS_1.3.43.0.3. 24447

NOTE: the GUI.zip included with this release has already been renamed to include 1.3.

This is required for installs that have not reached build 42. Because the software installed on your local workstation is a pre-42 build it detects a version mismatch in the software naming and won't allow the newest build to be launched (it is looking for 1.3. in the name). Once the workstation(s) have reached a build of 42 we will no longer need to add "1.3." to the GUI.zip name. Also note that a core install will not resolve this issue below.

NOTE: If your upgrade is coming from 40.016.1 or prior a core install will be required. Versions (builds) of 40.017 and greater do not require a core install as long as you are at least at 40.017 (Core Version 1.3.40.18756)

eRAD RIS Server Update

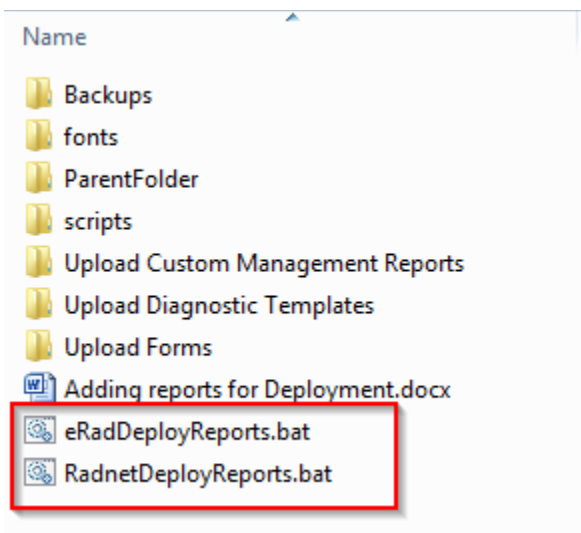
- 2) Stop each service listed below. Copy the files from the RIS Service Updates folder to the directory for each rRISService. Be sure to make backup of all files, but especially the rRISServices.exe.config and rRISServices.vshost.exe.config files.

rRISService directories include:

- a) *rRISService*
- b) *CDS rRISService*
- c) *Wedge rRISService*
- d) *DDE rRISService*

Restart each service.

- 3) Run the B43.0.4.sql file against the eRAD RIS database instance.
- 4) Management Reports Deployment / SSRSDeployment - There are 2 utilities called **RadnetDeployReports.bat** and **eRadDeployReports.bat** that will deploy the reports to a SQL Server Report Service. This utility is found in the **Build X\SSRSDeployment** folder. Below are the steps on how to use this utility. The purpose for the 2 .bat files are the RadNet one deploys a few extra reports specific to RadNet.



1. Launch the DeployReports.bat file.
2. **Enter report server name [default:<computer_name>]:**
 - a. A script will run against the server and return a list of all the root folders on that report server
**By Default this will pull the computer_name environmental variable from the machine running the script. I suggest running this from the report server for performance anyway.
3. **Enter root folder to deploy reports [default: production]:**

- a. This will create a new root if the name you give doesn't exist, or it will simply publish below the root of the folder if it does already exist. We typically will use "production" for the installation folder. Note: The script forces the root name to be lowercase.
**Default is suggested to be production, but you may need to change it based on the environment you are deploying to. Ie: testserver might be called something else.
4. **Do you wish to create a backup of the existing reports?:**
 - a. This will create a file backup of the report directory specified in the same directory deploy.bat is being run from inside a folder called Backups where it will create a folder based on datetime of backup. Ie: 04172014_110605 (MMDDYYYY_HHMISS).
5. **Do you wish to deploy core management reports?**
 - a. If you enter "y", it will redeploy the core management reports
6. **Do you wish to upload Forms?**
 - a. If you enter "y", the script will deploy any .rdl files into the installations Forms folder that you have previously saved into the script folder called "Upload Forms" including the folder below it called SubReports.
7. **Do you wish to upload Diagnostic Templates?**
 - a. If you enter "y", the script will deploy any .rdl files into the installations Diagnostic Templates folder that you have previously saved into the script folder called "Upload Diagnostic Templates" including the folder below it called SubReports.
8. **Do you wish to upload Custom Management Reports?**
 - a. Entering "Y" will copy any .rdl files you've copied under the deployment folder called Upload Custom Management Reports onto the server under Management Reports\Custom\Uploads directory
9. **Do you wish to create a datasource?**
 - a. If you select "y" you will get prompted for more information about the datasource you wish to create. You only need to create a datasource, if this is a new installation. No need to do this if you are upgrading an existing installation. The datasource gets created in the root of the folder from step 3. The datasource will be called RISDataSource.

If you chose to create a datasource, the following steps will be requested to complete the connection string.

1. **Enter database server name:**
 - a. This is the name of the physical database server
ex. MYSERVER-1
 2. **Enter database name:**
 - a. This is the name of the database on the database server
ex. rRIS_Site
-

eRAD RIS Server Update

3. **Enter report schema user name:** ex. The account that the datasource will use to connect to the database ie: SA. (For security reasons “sa” is not recommended)
4. **Enter report schema password:**

The results of deployment will be written to log.txt in the same folder as the DeployReports.bat file.