

Server Update

For eRAD RIS

Version 3.0

Build 3.2017.6

Update 3.2017.6.1

Table of Contents

Package Contents	3
Intended Audience	3
Who is affected.....	3
Resolved Items	4
Code Stream	7
eRAD RIS Release Version Numbers	8
Installing	9
Client/GUI.....	9
Web Service	9
Database Updates	11

PACKAGE CONTENTS

 _ReleaseNotes	2/2/2018 5:48 PM
 DB	2/1/2018 3:46 PM
 rRISService	2/1/2018 3:46 PM
 ThickClient	2/1/2018 3:46 PM

INTENDED AUDIENCE

The intended audience for this document is the RadNet Clinical Systems team and the eRAD Support/Service team.

It is appropriate to share the document with any customers applying the patch, in order to review new feature descriptions and resolved defects.

WHO IS AFFECTED

Build 2017.6 installs. This server update must be applied to 2017.6.

RESOLVED ITEMS

eRAD RIS

Redmine #	Subject
19617	Validation rule with a UI_PatientCreated intended UI action will now appropriately fire from the New Patient screen.
19665	Changed the Issuer dropdown content in the MRN grid back to Issuer Description (instead of Issuer ID Code).
19709	Utilization Review - Opinion Letter is no longer prompting to save changes when no changes are made. No longer receive Foreign Key Constraint error on save.
19556	Resolved error in Exam Search that occurred after closing a different worklist that had context menu open.
19783	Order, Schedule and Patient Notes appropriately appear on separate lines when populated via interface.

The following items, developed for future or previous RIS versions. These items have been added to this patch release to allow for upgrade to the 2017.6.X version

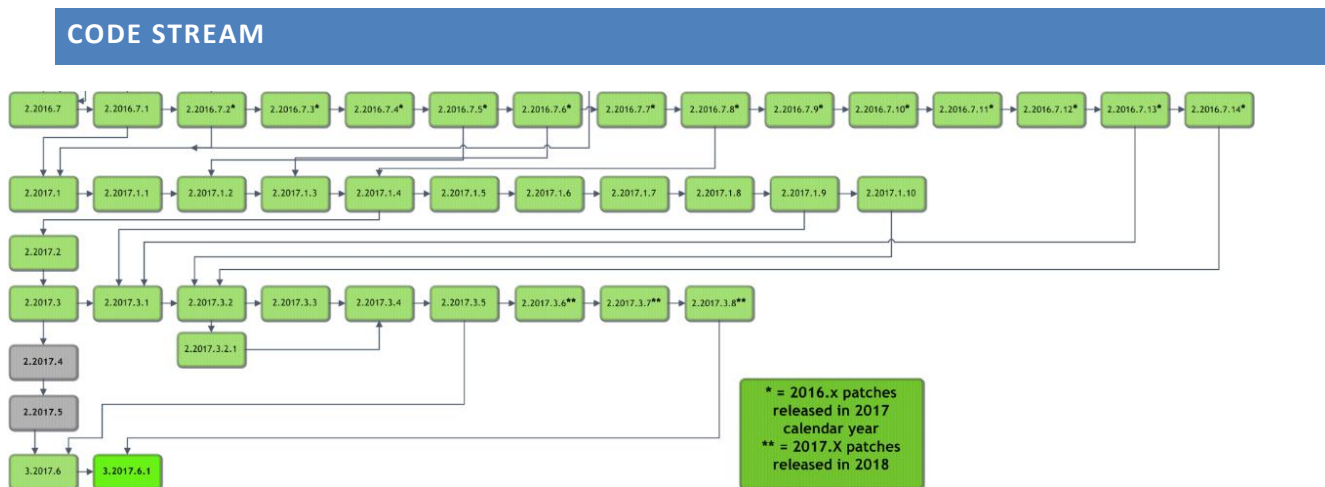
Redmine #	Subject	Original Resolved Version
19588	Resolved error thrown on various worklists related to the caching toggle button.	2.2017.3.7
19520	Resolved an issue which could cause incorrect studies to cache when switching worklist views.	2.2017.3.6
19521	No longer submit a call to prefetch PACS studies when closing the Pending Dictation WL, which could cause a delay in closing the	2.2017.3.6

No part of this material may be published, reproduced, stored in a retrieval system, or transmitted

in any form or by any means without the prior written permission from eRAD.

	worklist.	
19512	Made a change to avoid a “server not responding” timeout error for users with a high number of studies set to cache.	2.2017.3.6
19513	Additional index created to reduce deadlock risk when updating worklist flags.	2.2017.3.6
19519	No longer receive errors when saving EMR patients without an MRN issuer in the look-up table.	2.2017.3.6
19523	Made a change to the way worklist flags are updated to decrease risk of deadlock errors.	2.2017.3.6
19720	Resolved an issue in which adding multiple CC Physicians could result in additional physicians being associated with the first CC physician’s report delivery address.	2.2017.3.8
19721	Resolved an issue that could cause the same CC Physician to be added multiple times in a loop under certain conditions.	2.2017.3.8
19722	Error no longer occurs when opening the Print Forms screen for procedures without a Body Part selected.	2.2017.3.8
19724	Changed the way in which Imagine payments are saved, reducing the risk of failing to save a record of the payment in RIS, which could result in staff inappropriately collecting a duplicate payment. If there is an issue that prevents a payment record from saving, the RIS user will receive a warning message containing the Imagine Reference # and will be instructed to contact an administrator.	2.2017.3.8
19726	Changed the method of searching the RIS database by UM Tracking Number, in order to prevent time out errors.	2.2017.3.8
19727	Resolved an issue that could cause validation rules to behave improperly when the rule and conditions for the rule referred to	2.2017.3.8

	information stored in different datasets.	
19514	Ensemble plugin is now able to handle self-referencing tables in outbound schema.	2.2017.3.6
19516	Changed index and release lock logic to resolve deadlock issues on c_locked_item.	2.2017.3.6
19517	Corrected an issue with External Verify workflow so that these exams fall to the correct worklist according to System Configuration setting.	2.2017.3.6
19518	Resolved an issue that could occur when a certain set of actions was performed during scheduling that could cause the save/close/schedule actions to become unresponsive for that tab.	2.2017.3.6
19522	Resolved an Imagine payment voiding issue that could occur when a study has moved to a new Practice between the time of collecting the payment and voiding it. The void will now always be issued with the same Imagine Data Set ID that was used when the payment was collected.	2.2017.3.6
19587	Added UM Status Code to filter criteria for Portal Tab configuration.	2.2017.3.7
19723	Procedure code General Description is now located in the correct place in messages sent from the Wedge.	2.2017.3.8
19725	Resolved an issue that caused the Save and Close buttons to disappear from the Add Mammo Biopsy screen when more than 4 rows of pathology codes were entered in the Pathology Codes field.	2.2017.3.8
19728	Reduced frequency of an Eligible API call (getCarrierDSByCode), which was previously called excessively and could impact system performance.	2.2017.3.8

**Legend:**

Light Green = Previously Released software

Gray = Internal version, non-release version

Bright Green = Current Release

ERAD RIS RELEASE VERSION NUMBERS

Build	Patch	UI Version	Core Version	WS Version	DB Version	Digital Forms	Patient Portal	UM Portal	Provider Portal	Notes
2016.7	-	2.16.7.0 (3GB)	2.16.7.0	2.16.7.0	2.16.7.0.00490835	2.16.7.0	1.16.7.0.493031	2.16.7.0.493008		Full version release
2016.7	1	2.16.7.1 (3GB)	2.16.7.0	2.16.7.1	2.16.7.0.00490835	2.16.7.0	1.16.7.0.493031	2.16.7.0.493008		GUI and Web Service updates
2016.7	2	2.16.7.2 (3GB)	2.16.7.0	2.16.7.2	2.16.7.0.00490835	2.16.7.0	1.16.7.0.493031	2.16.7.0.493008		GUI and Web Service updates
2016.7	3	2.16.7.3 (3GB)	2.16.7.0	2.16.7.3	2.16.7.0.00490835	2.16.7.0	1.16.7.0.493031	2.16.7.0.493008		GUI and Web Service updates
2016.7	4	2.16.7.4 (3GB)	2.16.7.0	2.16.7.3	2.16.7.0.00490835	2.16.7.0	1.16.7.0.493031	2.16.7.0.493008		GUI
2016.7	5	2.16.7.5 (3GB)	2.16.7.0	2.16.7.3	2.16.7.0.00490835	2.16.7.0	1.16.7.0.493031	2.16.7.0.493008		GUI
2016.7	6	2.16.7.6 (3GB)	2.16.7.0	2.16.7.6	2.16.7.0.00490835	2.16.7.0	1.16.7.0.493031	2.16.7.0.493008		GUI and Web Service updates
2016.7	7	2.16.7.7 (3GB)	2.16.7.0	2.16.7.7	2.16.7.0.00490835	2.16.7.0	1.16.7.0.493031	2.16.7.0.493008		GUI and Web Service updates
2016.7	8	2.16.7.8 (3GB)	2.16.7.0	2.16.7.7	2.16.7.8.00683507	2.16.7.0	1.16.7.0.493031	2.16.7.0.493008		GUI and DB updates
2016.7	9	2.16.7.9 (3GB)	2.16.7.0	2.16.7.9	2.16.7.9.00715012	2.16.7.0	1.16.7.0.493031	2.16.7.9.723457		GUI, Web Services, DB updates and UM Portal
2016.7	10	2.16.7.10 (3GB)	2.16.7.0	2.16.7.10	2.16.7.9.00715012	2.16.7.0	1.16.7.0.493031	2.16.7.9.723457		GUI and Web Service updates
2016.7	11	2.16.7.11 (3GB)	2.16.7.0	2.16.7.11	2.16.7.11.00761267	2.16.7.0	1.16.7.0.493031	2.16.7.9.723457		GUI, Web Service and DB updates
2016.7	12	2.16.7.12 (3GB)	2.16.7.0	2.16.7.11	2.16.7.11.00761267	2.16.7.0	1.16.7.0.493031	2.16.7.9.723457		GUI
2016.7	13	2.16.7.13 (3GB)	2.16.7.0	2.16.7.13	2.16.7.13.00823274	2.16.7.0	2.16.7.13.805715	2.16.7.13.805717		GUI, Web Service, DB, Patient and UM Portal updates
2016.7	14	2.16.7.14 (3GB)	2.16.7.0	2.16.7.14	2.16.7.14.00888220	2.16.7.0	2.16.7.14.897644	2.16.7.14.897646		GUI, Web Service, DB, Patient and UM Portal updates
2017.1	-	2.17.1.0 (3GB)	2.17.1.0	2.17.1.0	2.17.1.0.00559886	2.17.1.0	2.17.1.0.572290	2.17.1.0.000000		Full Version Release
2017.1	1	2.17.1.1 (3GB)	2.17.1.0	2.17.1.1	2.17.1.1.00589952	2.17.1.0	2.17.1.0.572290	2.17.1.0.000000		GUI, Web Service and DB updates
2017.1	2	2.17.1.2 (3GB)	2.17.1.0	2.17.1.2	2.17.1.2.00621962	2.17.1.0	2.17.1.0.572290	2.17.1.0.000000		GUI, Web Service and DB updates
2017.1	3	2.17.1.3 (3GB)	2.17.1.0	2.17.1.3	2.17.1.3.00640480	2.17.1.0	2.17.1.0.572290	2.17.1.0.000000		GUI, Web Service and DB updates
2017.1	4	2.17.1.4 (3GB)	2.17.1.0	2.17.1.4	2.17.1.4.00692239	2.17.1.0	2.17.1.4.701924	2.17.1.0.000000		GUI, Web Service, DB and Patient Portal updates
2017.1	5	2.17.1.4 (3GB)	2.17.1.0	2.17.1.5	2.17.1.4.00692239	2.17.1.0	2.17.1.4.701924	2.17.1.0.000000		Web Service
2017.1	6	2.17.1.6 (3GB)	2.17.1.0	2.17.1.5	2.17.1.6.00745281	2.17.1.0	2.17.1.4.701924	2.17.1.0.000000		GUI and DB Updates
2017.1	7	2.17.1.7 (3GB)	2.17.1.0	2.17.1.5	2.17.1.6.00745281	2.17.1.0	2.17.1.4.701924	2.17.1.0.000000		GUI update
2017.1	8	2.17.1.8 (3GB)	2.17.1.0	2.17.1.5	2.17.1.6.00745281	2.17.1.0	2.17.1.4.701924	2.17.1.0.000000		GUI update
2017.1	9	2.17.1.9 (3GB)	2.17.1.0	2.17.1.5	2.17.1.6.00745281	2.17.1.0	2.17.1.4.701924	2.17.1.0.000000		GUI update
2017.1	10	2.17.1.10 (3GB)	2.17.1.0	2.17.1.10	2.17.1.6.00745281	2.17.1.0	2.17.1.4.701924	2.17.1.0.000000		GUI and Web Service update
2017.2	-	2.17.2.0 (3GB)	2.17.2.0	2.17.2.0	2.17.2.0.00695782	2.17.2.0	2.17.2.0.702238	2.17.2.0.702213	2.17.2.0.702226	Full Version Release. First release of Provider Portal
2017.3	-	2.17.3.0 (3GB)	2.17.3.0	2.17.3.0	2.17.3.0.00764112	2.17.3.0	2.17.3.0.321	2.17.3.0.321	2.17.3.0.321	Full Version Release. Including Patient, Provider and UM Portals
2017.3	1	2.17.3.1 (3GB)	2.17.3.0	2.17.3.1	2.17.3.1.00846328	2.17.3.1	2.17.3.1.853299	2.17.3.1.853301	2.17.3.1.856171	GUI, Web Service, DB. Including Patient, Provider and UM Portals
2017.3	2	2.17.3.2 (3GB)	2.17.3.0	2.17.3.2	2.17.3.2.00898348	2.17.3.2	2.17.3.2.913898	2.17.3.2.913899	2.17.3.1.856171	GUI, Web Service, DB. Including Patient, Provider and UM Portals
2017.3	2.1	2.17.3.2.1 (3GB)	2.17.3.0	2.17.3.2	2.17.3.2.00898348	2.17.3.2	2.17.3.2.913898	2.17.3.2.913899	2.17.3.1.856171	GUI Only
2017.3	3	2.17.3.3 (3GB)	2.17.3.0	2.17.3.3	2.17.3.3.00954008	2.17.3.2	2.17.3.3.962869	2.17.3.3.962870	2.17.3.3.962870	GUI, Web Service, DB. Including Patient, Provider and UM Portals
2017.3	4	2.17.3.4 (3GB)	2.17.3.0	2.17.3.4	2.17.3.4.00987562	2.17.3.2	2.17.3.3.962869	2.17.3.3.962870	2.17.3.3.962870	GUI, Web Service and DB
2017.3	5	2.17.3.5 (3GB)	2.17.3.0	2.17.3.5	2.17.3.5.01023250	2.17.3.2	2.17.3.5.1023087	2.17.3.5.1025862	2.17.3.5.1023087	GUI, Web Service, DB, Patient Portal, Referring Portal, UM Portal
2017.3	6	2.17.3.6 (3GB)	2.17.3.0	2.17.3.6	2.17.3.6.01065114	2.17.3.2	2.17.3.5.1023087	2.17.3.5.1025862	2.17.3.5.1023087	GUI, Web Service, DB,
2017.3	7	2.17.3.7 (3GB)	2.17.3.0	2.17.3.6	2.17.3.6.01065114	2.17.3.2	2.17.3.5.1023087	2.17.3.5.1025862	2.17.3.5.1023087	GUI
2017.3	7	2.17.3.8 (3GB)	2.17.3.0	2.17.3.8	2.17.3.6.01065114	2.17.3.2	2.17.3.5.1023087	2.17.3.5.1025862	2.17.3.5.1023087	GUI and Web Service
2017.6	-	3.17.6.0 (3GB)	3.17.6.0	3.17.6.0	3.17.6.0.01037550	3.17.6.0	3.17.6.0.1037868	3.17.6.0.1037869	3.17.6.0.1037869	Full Version Release. Including Patient, Provider and UM Portals
2017.6	1	3.17.6.1 (3GB)	3.17.6.0	3.17.6.1	3.17.6.1.01094077	3.17.6.0	3.17.6.0.1037868	3.17.6.0.1037869	3.17.6.0.1037869	GUI, Web Service and DB updates

No part of this material may be published, reproduced, stored in a retrieval system, or transmitted

in any form or by any means without the prior written permission from eRAD.

INSTALLING

CLIENT/GUI

Copy and replace the current rRIS...zip file with the eRAD_rRIS_2017.6.1.zip file provided with this release.

Be sure to make a backup of the ris.exe.config file contained within the current .zip folder.

WEB SERVICE

This updated is only required for the Wedge Web Services. The Core RIS Service and Document Distribution Service are not required to be updated.

1. The web service upgrade consists of replacing the files in the RIS Web Service directory with the files supplied in the rRISService folder with this build. Always create a backup of the files being replaced. This upgrade includes 141 files in the rRISService folder and 7 sub folders. Of those folders, 1 is a folder titled “**XSL**” that contains a sub folder and files within the subfolder. Another folder is titled “**deploy**” that contains the new .config files that will be deployed with the user of the file called “ServicesConfigWizard.exe” (see instructions below). Folders are (Arabic), en_AU (Australian English), en-ZA (South Africa), he (Hebrew), pt_BR (Brazilian Portuguese), es-AR (Argentina Spanish) and ru-RU (Russian) and are localization folders. The WedgePlugins folder contains various plugin files for RADAR, MIRTH, Ensemble, etc...

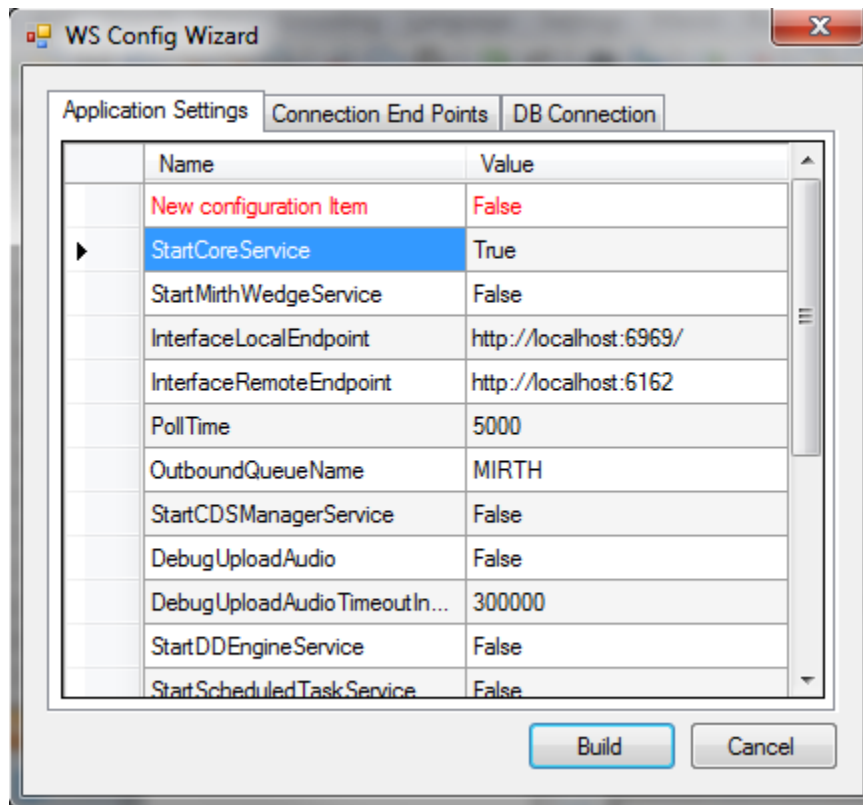
Services Configuration Wizard

With the release of 42 to decrease the chance of losing configuration setting and missing new configuration options, we will no longer include the configuration files in the release in the main set of files, but they will now exist in a “deploy” folder, which will contain the three site configurable config files; applicationsettings, connectionstrings, and services as well as a copy of the rRISServices.exe configuration file. The contents of this folder should not be required to be touched.

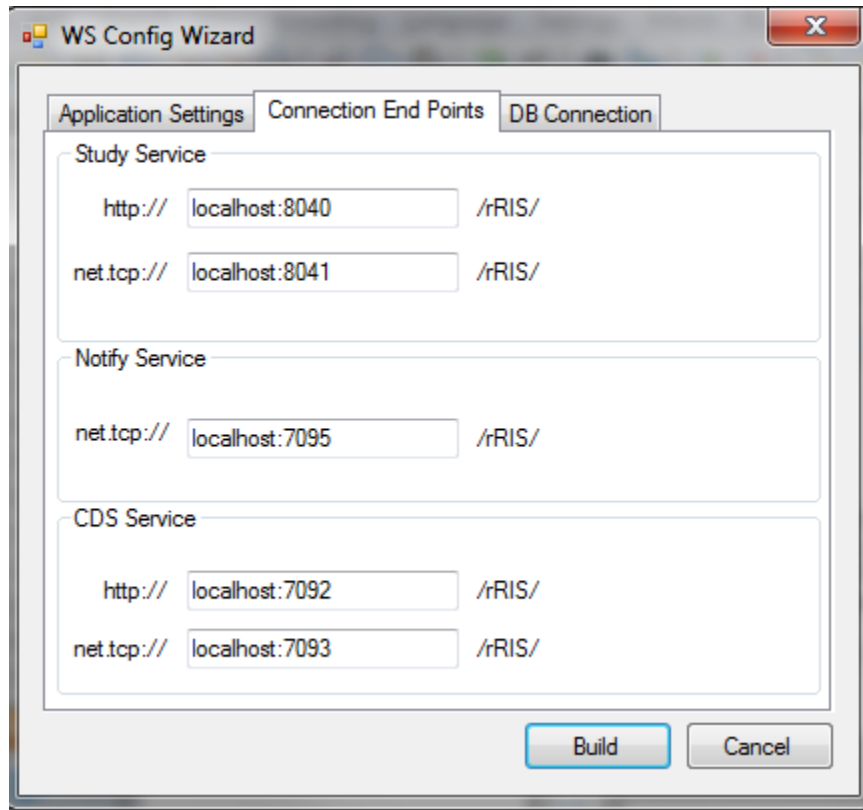
On the install of a new service, all files will be copied to the appropriate locations on the server (no configurations will be over written). If instructed or to confirm no new configurations have been added the user can run the new application “ServicesConfigWizard.exe”

This application will read the existing configuration file(s) (if files exist), and compare to the provided new configuration files then will display three tabs, for each configuration file:

Application Settings: all existing configuration value will be displayed, if there are any new configuration entries they will be displayed in red.



Connection End Points: will display the existing configuration, if the value is left blank then that entry will not be created, in the case of “Study Service” or “CDS Service” if both http and net.tcp were not provided then that endpoint will not be created at all.



DATABASE UPDATES

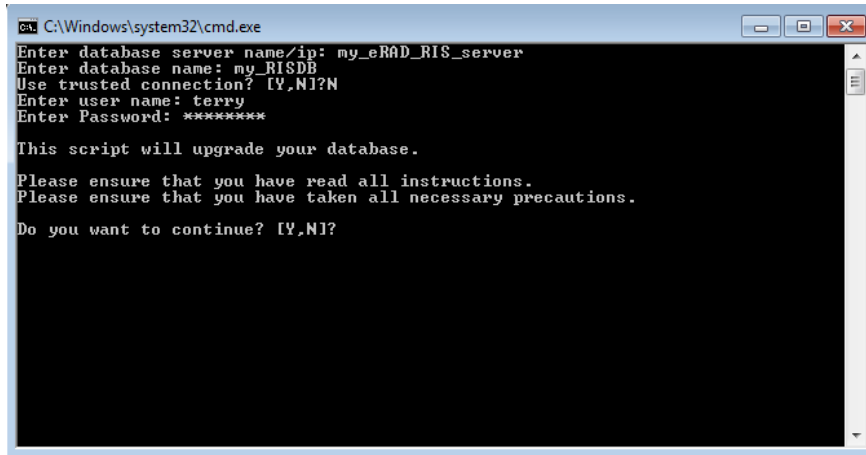
Always run the upgrade scripts in a test environment of the actual database to make sure they run cleanly. If any errors occur please contact development.

Note: There is a new upgrade process introduced with B43.1 called "RunUpgrade.bat". The batch file will open a command window. This process will prompt you for the database server name, database name and authentication credentials. There is no need to run the database upgrade scripts manually as was done in previous releases.

- 1) From the upgrade folder, double click the "RunUpgrade.bat" command file.
- 2) Enter the server name, database name and authentication credentials to the database. You have 2 choices for authentication credentials.

- 3) You can choose to use “Trusted connection”. Using this option will pass the identity of the currently logged on user. If this user has “db_owner” access to the eRAD RIS database then feel free to use this options.
- 4) If you decide not to use “Trusted connection” then you will be prompted for user id and password.

Example:



```
C:\Windows\system32\cmd.exe
Enter database server name/ip: my_eRAD_RIS_server
Enter database name: my_RISDB
Use trusted connection? [Y,N]?Y
Enter user name: terry
Enter Password: *****

This script will upgrade your database.
Please ensure that you have read all instructions.
Please ensure that you have taken all necessary precautions.
Do you want to continue? [Y,N]?
```

- 5) After the upgrade program has finished you can find the upgrade logs in the “log” folder. The file name will be eRAD_RIS_db_upgrade_timestamp.log, where timestamp is a value representing the date and time the upgrade started. If you see any errors please contact the development team