

Server Update

For eRAD RIS
Version 2.0
Build 44.7
Update 44.7.4

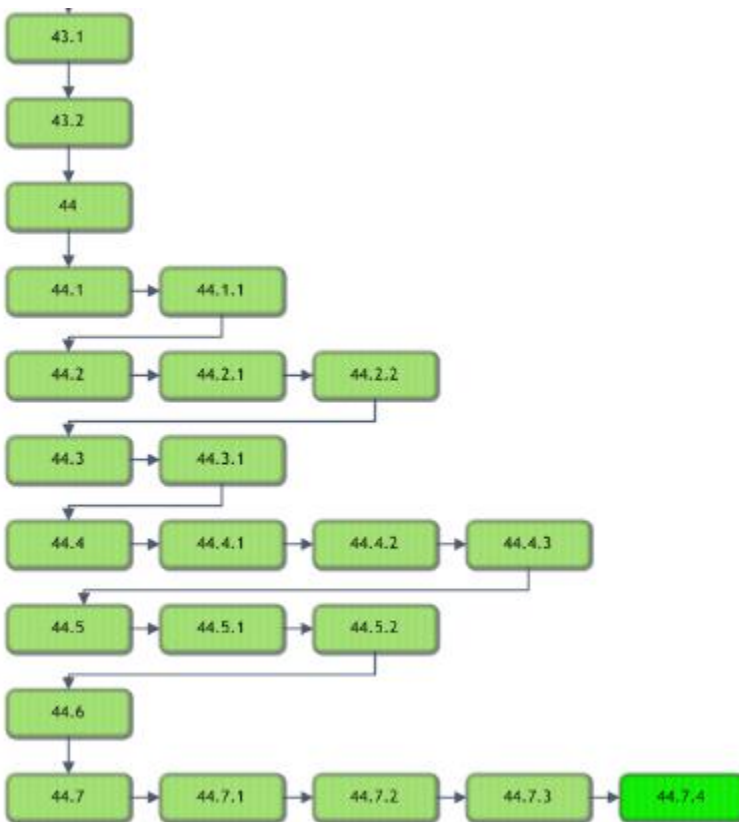
Table of Contents

1. Resolved Items	3
2. Code Stream	4
3. Package Contents	5
4. Intended Audience	5
5. Who is affected	5
6. eRAD RIS Release Version Numbers	6
7. Installing	7
Client/GUI	7

1. Resolved Items

Redmine #	Subject	Priority
12785	Insurance Eligibility - When scheduling with more than one insurance hourglass does not clear	Normal
12787	Insurance Eligibility - Timing issue results in incorrect 100% co-insurance amount	Normal

2. Code Stream





Legend:

Light Green = Released software

Gray = Will not be released

Bright Green = Current Release

3. Package Contents

Name	Date modified	Type
 _ReleaseNotes	1/5/2016 1:29 PM	File folder
 ThickClient	12/31/2015 9:40 AM	File folder

4. Intended Audience

This document is created by the RIS Development team for the RadNet/eRAD RIS Implementation teams.

5. Who is affected

Build 44.7 installs. This server update must be applied to 44.7.2

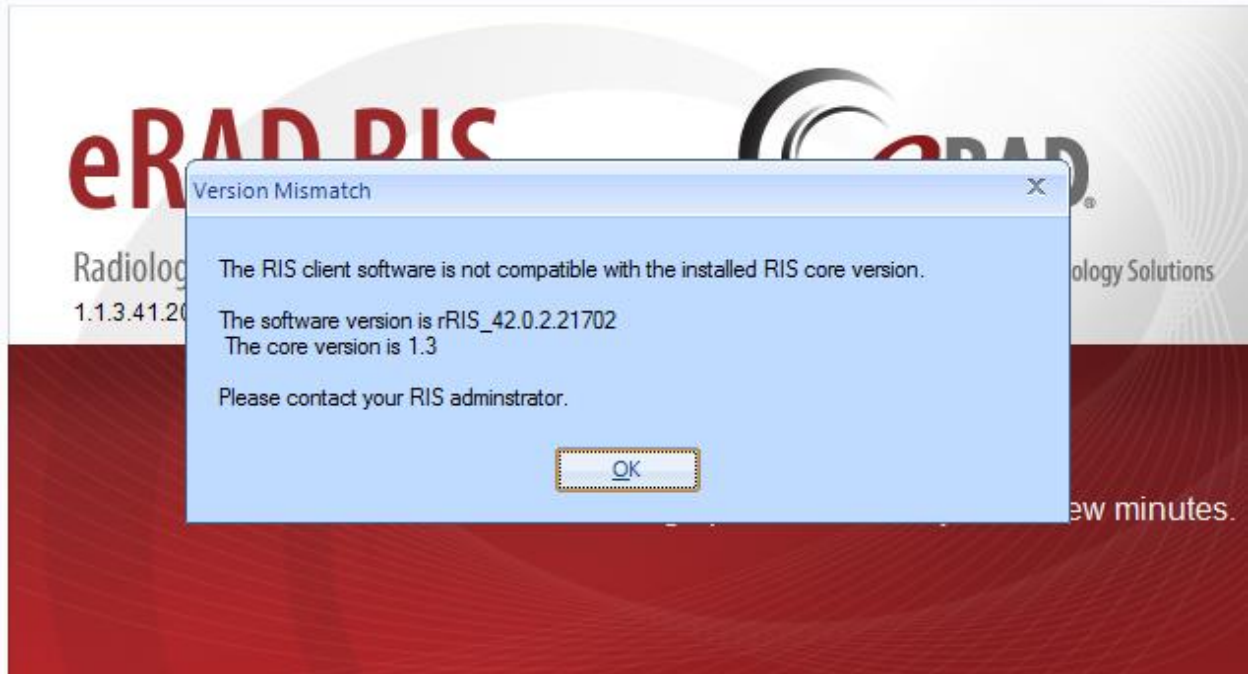
6. eRAD RIS Release Version Numbers

Build	Patch	UI Version	Core Version	WS Version	DB Version	Notes
43	-	2.43.0.0.23715(3GB)	2.43.0.0.23171	2.43.0.0.23715	2.43.0.0.23743	Full Version Release
43	1	2.43.0.1.23798(3GB)	2.43.0.0.23171	2.43.0.1.23798	2.43.0.1.23770	Gui.zip, Web Service, DB updates
43	2	2.43.0.2.24017(3GB)	2.43.0.0.23171	2.43.0.2.24017	2.43.0.2.24023	Gui.zip, Web Service, DB updates and Management Report Deployment
43	3	2.43.0.3.24298(3GB)	2.43.0.0.23171	2.43.0.3.24298	2.43.0.3.24283	Gui.zip, Web Service, DB updates and Management Report Deployment
43	3.1	2.43.0.3.24450(3GB)	2.43.0.0.23171	2.43.0.3.24298	2.43.0.3.24421	Gui.zip, and DB updates
43	3.2	2.43.0.3.24450(3GB)	2.43.0.0.23171	2.43.0.3.24298	2.43.0.3.24421a	DB updates
43	4	2.43.0.4.24447(3GB)	2.43.0.0.23171	2.43.0.4.24447	2.43.0.4.24442	Gui.zip, Web Service, DB updates and Management Report Deployment
43	5	2.43.0.4.24632(3GB)	2.43.0.0.23171	2.43.0.4.24632	2.43.0.4.24560	Gui.zip, Web Service and DB updates
43	6	2.43.0.4.24(3GB)	2.43.0.0.23171	2.43.0.4.24	2.43.0.4.24	Gui.zip, Web Service and DB updates
43	6.1	2.43.0.6.24937(3GB)	2.43.0.0.23171	2.43.0.6.24937	2.43.0.6.24914	Gui.zip, Web Service
43	6.2	2.43.0.6.24970(3GB)	2.43.0.0.23171	2.43.0.6.24970	2.43.0.6.24914	Gui.zip, Web Service
43	7	2.43.0.7.25258(3GB)	2.43.0.0.23171	2.43.0.7.25258	2.43.0.7.25226	Gui.zip, Web Service, DB updates and Management Report Deployment
43	8	2.43.0.8.25440(3GB)	2.43.0.0.23171	2.43.0.8.25440	2.43.0.8.25425	Gui.zip, Web Service, DB updates and Management Report Deployment
43	9	2.43.0.9.25477(3GB)	2.43.0.0.23171	2.43.0.9.25477	2.43.0.8.25425	Gui.zip and Web Service
43	10	2.43.0.9.25477(3GB)	2.43.0.0.23171	2.43.0.10.25477	2.43.0.8.25425	Web Service
43	11	2.43.0.11.25512(3GB)	2.43.0.0.23171	2.43.0.11.25512	2.43.0.8.25425	Gui.zip and Web Service
43	12	2.43.0.12.25554(3GB)	2.43.0.0.23171	2.43.0.12.25554	2.43.0.12.25536	Gui.zip Web Service and DB Updates
43	13	2.43.0.12.25610(3GB)	2.43.0.0.23171	2.43.0.12.25610	2.43.0.12.25536	Gui.zip and Web Service
43	14	2.43.0.14.25644(3GB)	2.43.0.0.23171	2.43.0.13.25610	2.43.0.12.25536	Gui.zip
43.1	-	2.43.1.0.25850(3GB)	2.43.0.0.23171	2.43.1.0.25850	2.43.1.0.25771	Gui.zip Web Service and DB Updates
43.2	-	2.43.2.0.26864(3GB)	2.43.0.0.23171	2.43.2.0.26864	2.43.1.0.25771	Gui.zip and Web Service
44	-	2.44.0.0.26570(3GB)	2.44.0.0.26405	2.44.0.0.26570	2.44.0.0.26475	Full Version Release
44.1	-	2.44.0.0.26984(3GB)	2.44.0.0.26405	2.44.0.0.26984	2.44.0.0.26906	Gui.zip, Web Service, and DB
44.1	1	2.44.1.1.27093(3GB)	2.44.0.0.26405	2.44.1.0.26984	2.44.1.0.26906	Gui.zip
44.2	-	2.44.2.0.27410(3GB)	2.44.0.0.26405	2.44.2.0.27410	2.44.2.0.27365	Gui.zip, Web Service, and DB
44.2	1	2.44.2.1.27959(3GB)	2.44.0.0.26405	2.44.2.1.27959	2.44.2.1.27909	Gui.zip, Web Service, and DB
44.2	2	2.44.2.1.27959(3GB)	2.44.0.0.26405	2.44.2.2.28094	2.44.2.1.27909	Web Service
44.3	-	2.44.3.0.28292	2.44.0.0.26405	2.44.3.0.28277	2.44.3.0.28138	Gui.zip, Web Service, and DB
44.3	1	2.44.3.1.28535(3GB)	2.44.0.0.26405	2.44.3.1.28535	2.44.3.0.28138	Gui.zip and Web Service
44.4	-	2.44.4.0.28762(3GB)	2.44.0.0.26405	2.44.4.0.28762	2.44.4.0.28676	Gui.zip, Web Server, DB, Management Report Deployment
44.4	1	2.44.4.1.28953(3GB)	2.44.0.0.26405	2.44.4.1.28953	2.44.4.0.28676	Gui.zip and Web Service
44.4	2	2.44.4.2.29327(3GB)	2.44.0.0.26405	2.44.4.2.29327	2.44.4.0.28676	Gui.zip and Web Service
44.4	3	2.44.4.2.29722(3GB)	2.44.0.0.26405	2.44.4.2.29327	2.44.4.0.28676	Gui.zip and Web Service
44.5	-	2.44.5.0.30022(3GB)	2.44.0.0.26405	2.44.5.0.30022	2.44.5.0.29976	Gui.zip, Web Service, DB
44.5	1	2.44.5.1.30451(3GB)	2.44.0.0.26405	2.44.5.1.30451	2.44.5.1.30449	Gui.zip, Web Service, DB
44.5	2	2.44.5.2.30705(3GB)	2.44.0.0.26405	2.44.5.1.30705	2.44.5.1.30554	Gui.zip, Web Service, DB
44.5	1	2.44.5.1.30451(3GB)	2.44.0.0.26405	2.44.5.1.30451	2.44.5.1.30449	Gui.zip, Web Service, DB
44.5	2	2.44.5.2.30705(3GB)	2.44.0.0.26405	2.44.5.1.30705	2.44.5.1.30554	Gui.zip, Web Service, DB
44.6	-	2.44.6.0.31341(3GB)	2.44.0.0.26405	2.44.6.0.31341	2.44.6.0.31182	Gui.zip, Web Service, DB
44.7	-	2.44.7.0.32205(3GB)	2.44.0.0.26405	2.44.7.0.32205	2.44.7.0.32125	Gui.zip, Web Service, DB, SQLReporting
44.7	1	2.44.7.1.32395(3GB)	2.44.0.0.26405	2.44.7.1.32395	2.44.7.0.32125	Gui.zip, Web Service
44.7	2	2.44.7.2.32694(3GB)	2.44.0.0.26405	2.44.7.2.32694	2.44.7.0.32125	Gui.zip, Web Service
44.7	3	2.44.7.3.32749(3GB)	2.44.0.0.26405	2.44.7.2.32694	2.44.7.0.32125	Gui.zip
44.7	4	2.44.7.4.32779 (3GB)	2.44.0.0.26405	2.44.7.2.32694	2.44.7.0.32125	Gui.zip

7. Installing

Client/GUI

- 1) Copy and replace the current rRIS...zip file with the rRIS_1.3.44.7.3.32779.zip file provided with this release.
Be sure to make a backup of the ris.exe.config file contained within the current .zip folder.



If you receive the Version Mismatch error above the GUI.zip will need to be renamed to add 1.3. to it. The GUI.zip file name change is from rRIS_44.7.3.32779→ rRIS_1.3.44.7.3.32779

NOTE: the GUI.zip included with this release has already been renamed to include 1.3.

This is required for installs that have not reached build 42. Because the software installed on your local workstation is a pre-42 build it detects a version mismatch in the software naming and won't allow the newest build to be launched (it is looking for 1.3. in the name). Once the workstation(s) have reached a build of 42 we will no longer need to add "1.3." to the GUI.zip name. Also note that a core install will not resolve this issue below.

NOTE: If your upgrade is coming from 40.016.1 or prior a core install will be required. Versions (builds) of 40.017 and greater do not require a core install as long as you are at least at 40.017 (Core Version 1.3.40.18756)