

# **Server Update**

For eRAD RIS  
Version 2.0  
Build 2.2016.7  
Update 2.2016.7.2

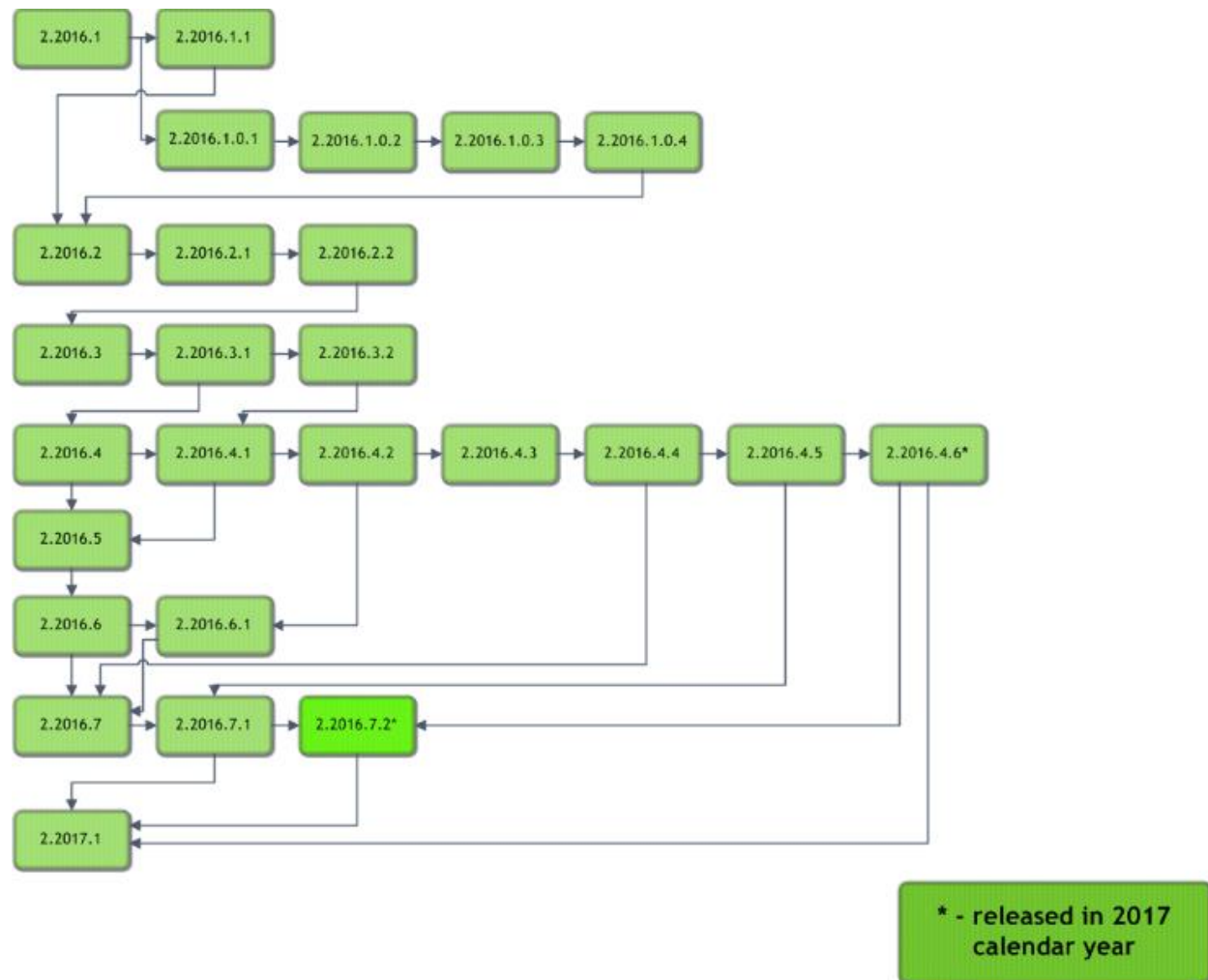
## **Table of Contents**

Resolved Items.....	3
Code Stream.....	4
Package Contents .....	5
Intended Audience .....	5
Who is affected .....	5
eRAD RIS Release Version Numbers .....	6
Installing .....	7
Client/GUI.....	7
Web Service .....	7

**Resolved Items****eRAD RIS**

Redmine #	Subject
16018	Wedge Deadlock in Resolution Caching issue has been resolved.
15926	Spell checker dictionaries now load for all eRAD RIS users even if they do not open a reporting screen.
15924	LogControl context menu is now available when in textbox only mode.

## Code Stream



## Legend:

Light Green = Previously Released software

Bright Green = Current Release

## Package Contents

_ReleaseNotes	02/03/2017 3:26 PM
rRISService	02/03/2017 1:12 PM
ThickClient	02/03/2017 3:25 PM

## Intended Audience

The intended audience for this document is the RadNet Clinical Systems team and the eRAD Support/Service team.

## Who is affected

Build 2016.7 installs. This server update must be applied to 2016.7.

## eRAD RIS Release Version Numbers

Build	Patch	UI Version	Core Version	WS Version	DB Version	Digital Forms	Patient Portal	UM Portal	Notes
2016.1	-	2.16.1.0.33419 (3GB)	2.16.1.0.33079	2.16.1.0.33419	2.16.1.0.33416				GUI.zip, Web Service, DB, Management Reports, Questionnaire and Citrix Bridge
2016.1	1	2.16.1.1.33672 (3GB)	2.16.1.0.33079	2.16.1.0.33419	2.16.1.0.33416				GUI.zip
2016.1	.0.1	2.16.1.0.1 (3GB)	2.16.1.0.33079	2.16.1.0.33419	2.16.1.0.33416				GUI.zip (This is not included in 2016.1.1, version directly above)
2016.1	.0.2	2.16.1.0.1 (3GB)	2.16.1.0.33079	2.16.1.0.2	2.16.1.0.33416				Wedge Web Services only
2016.1	.0.3	2.16.1.0.3 (3GB)	2.16.1.0.33079	2.16.1.0.3	2.16.1.0.3.00128918				GUI.zip, Web Services and DB
2016.1	.0.4	2.16.1.0.4 (3GB)	2.16.1.0.33079	2.16.1.0.4	2.16.1.0.3.00128918				GUI.zip, Web Services
2016.2	-	2.16.2.0 (3GB)	2.16.2.0	2.16.2.0	2.16.2.0.00172540				Full Version Release - GUI.zip, Web Service, DB, Management Reports, Questionnaire and Citrix Bridge
2016.2	1	2.16.2.1 (3GB)	2.16.2.0	2.16.2.0	2.16.2.0.00172540				GUI.zip and Citrix Bridge
2016.2	2	2.16.2.2 (3GB)	2.16.2.0	2.16.2.0	2.16.2.2.00243102				GUI.zip, DB and Citrix Bridge
2016.3	-	2.16.3.0 (3GB)	2.16.3.0	2.16.3.0	2.16.3.0.00257101	2.16.3.0			Full Version Release
2016.3	1	2.16.3.1	2.16.3.0	2.16.3.1	2.16.3.1.00298834	2.16.3.0			GUI.zip, Web Service and DB
2016.3	2	2.16.3.2	2.16.3.0	2.16.3.2	2.16.3.1.00298834	2.16.3.0			GUI.zip and Web Service
2016.4	-	2.16.4.0	2.16.4.0	2.16.4.0	2.16.4.0.00301943	2.16.4.0	1.16.4.0.310284		Full Version Release
2016.4	1	2.16.4.1	2.16.4.0	2.16.4.1	2.16.4.0.00301943	2.16.4.0	1.16.4.0.310284		GUI and Web Service updates
2016.4	2	2.16.4.2 (3GB)	2.16.4.0	2.16.4.1	2.16.4.0.00301943	2.16.4.0	1.16.4.2.460241		GUI and Patient Portal updates
2016.4	3	2.16.4.3 (3GB)	2.16.4.0	2.16.4.3	2.16.4.3.00483474	2.16.4.0	1.16.4.3.489120		GUI and Patient Portal updates
2016.4	4	2.16.4.4 (3GB)	2.16.4.0	2.16.4.3	2.16.4.3.00483474	2.16.4.0	1.16.4.3.489120		GUI
2016.4	5	2.16.4.5 (3GB)	2.16.4.0	2.16.4.3	2.16.4.3.00483474	2.16.4.0			GUI
2016.4	6	2.16.4.6 (3GB)	2.16.4.0	2.16.4.3	2.16.4.3.00483474	2.16.4.0			GUI
2016.5	-	2.16.5.0 (3GB)	2.16.5.0	2.16.5.0	2.16.5.0.00349303	2.16.5.0	1.16.5.0.362009		Full Version Release
2016.6	-	2.16.6.0 (3GB)	2.16.6.0	2.16.6.0	2.16.6.0.00411295	2.16.6.0	1.16.6.0.432471		Full Version Release
2016.6	1	2.16.6.1 (3GB)	2.16.6.0	2.16.6.0	2.16.6.0.00411295	2.16.6.0	1.16.6.1.468583		GUI and Patient Portal updated
2016.7	-	2.16.7.0 (3GB)	2.16.7.0	2.16.7.0	2.16.7.0.00490835	2.16.7.0	1.16.7.0.493031	2.16.7.0.493008	Full version release
2016.7	1	2.16.7.1 (3GB)	2.16.7.0	2.16.7.1	2.16.7.0.00490835	2.16.7.0	1.16.7.0.493031	2.16.7.0.493008	GUI and Web Service updates
2016.7	2	2.16.7.2 (3GB)	2.16.7.0	2.16.7.2	2.16.7.0.00490835	2.16.7.0	1.16.7.0.493031	2.16.7.0.493008	GUI and Web Service updates
2017.1	-	2.17.1.0 (3GB)	2.17.1.0	2.17.1.0	2.17.1.0.00559886	2.17.1.0	2.17.1.0.572290	2.17.1.0.00000	Full Version Release

## Installing

### Client/GUI

Copy and replace the current rRIS...zip file with the eRAD\_rRIS\_2016.7.2.zip file provided with this release.

Be sure to make a backup of the ris.exe.config file contained within the current .zip folder.

### Web Service

This update is only required for the Wedge Web Services. The Core RIS Service and Document Distribution Service are not required to be updated.

1. The web service upgrade consists of replacing the files in the RIS Web Service directory with the files supplied in the rRISService folder with this build. Always create a backup of the files being replaced. This upgrade includes 134 files in the rRISService folder and 7 sub folders. Of those folders, 1 is a folder titled “XSL” that contains a sub folder and files within the subfolder. Another folder is titled “**deploy**” that contains the new .config files that will be deployed with the user of the file called “ServicesConfigWizard.exe” (see instructions below). Folders are (Arabic), he (Hebrew), pt\_BR (Brazilian Portuguese) and es-AR (Argentina Spanish) are localization folders. The WedgePlugins folder contains various plugin files for RADAR, MIRTH, Ensemble, etc...

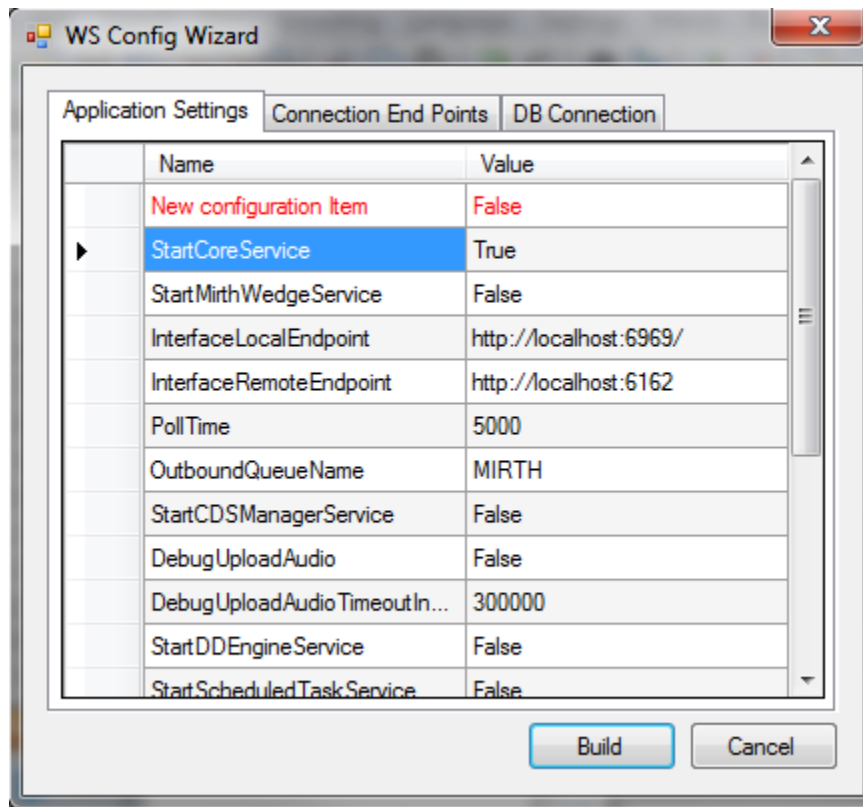
### **Services Configuration Wizard**

With the release of 4.2 to decrease the chance of losing configuration settings and missing new configuration options, we will no longer include the configuration files in the release in the main set of files, but they will now exist in a “deploy” folder, which will contain the three site configurable config files; applicationsettings, connectionstrings, and services as well as a copy of the rRISServices.exe configuration file. The contents of this folder should not be required to be touched.

On the install of a new service, all files will be copied to the appropriate locations on the server (no configurations will be overwritten). If instructed or to confirm no new configurations have been added the user can run the new application “ServicesConfigWizard.exe”

This application will read the existing configuration file(s) (if files exist), and compare to the provided new configuration files then will display three tabs, for each configuration file:

**Application Settings:** all existing configuration values will be displayed, if there are any new configuration entries they will be displayed in red.





**Connection End Points:** will display the existing configuration, if the value is left blank then that entry will not be created, in the case of “Study Service” or “CDS Service” if both http and net.tcp were not provided then that endpoint will not be created at all.

The screenshot shows the 'WS Config Wizard' dialog box with the 'Connection End Points' tab selected. The dialog has three tabs: 'Application Settings', 'Connection End Points', and 'DB Connection'. The 'Connection End Points' tab contains three sections: 'Study Service', 'Notify Service', and 'CDS Service'. Each section has two rows of input fields for 'http://' and 'net.tcp://' protocols, followed by a '/rRIS/' label. The 'Study Service' section has 'localhost:8040' and 'localhost:8041'. The 'Notify Service' section has 'localhost:7095'. The 'CDS Service' section has 'localhost:7092' and 'localhost:7093'. At the bottom right, there are 'Build' and 'Cancel' buttons.

Service	Protocol	Host:Port	Path
Study Service	http://	localhost:8040	/rRIS/
	net.tcp://	localhost:8041	/rRIS/
Notify Service	net.tcp://	localhost:7095	/rRIS/
	http://		
CDS Service	http://	localhost:7092	/rRIS/
	net.tcp://	localhost:7093	/rRIS/