

# **Server Update**

For eRAD RIS

Version 2.0

Build 2.2017.3

Update 2.2017.3.9

## **Table of Contents**

Package Contents .....	3
Intended Audience .....	3
Who is affected.....	3
Resolved Items .....	4
Code Stream .....	5
eRAD RIS Release Version Numbers .....	6
Installing .....	7
Web Service .....	7

**PACKAGE CONTENTS**

 _ReleaseNotes	2/14/2018 8:24 AM
 rRISService	2/13/2018 2:44 PM
 Service Tools	2/13/2018 2:46 PM

**INTENDED AUDIENCE**

The intended audience for this document is the RadNet Clinical Systems team and the eRAD Support/Service team.

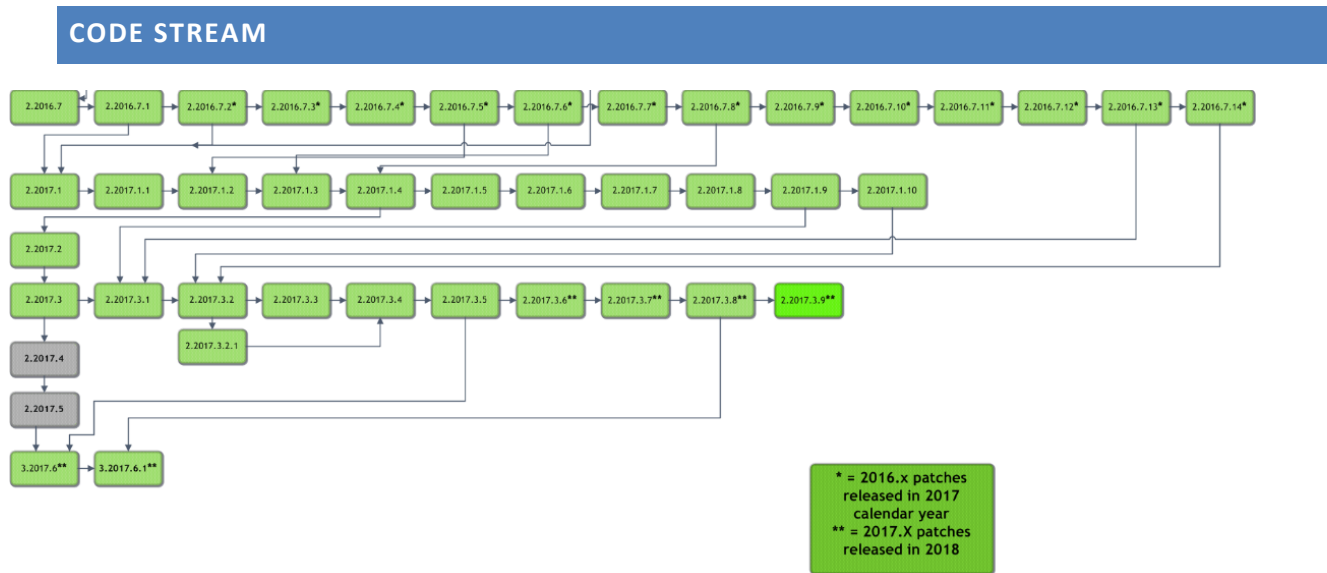
It is appropriate to share the document with any customers applying the patch, in order to review new feature descriptions and resolved defects.

**WHO IS AFFECTED**

Build 2017.3 installs. This server update must be applied to 2017.3.8.

**RESOLVED ITEMS****eRAD RIS**

Redmine #	Subject
19901	All Carrier codes are once again expanded in outbound messages, which resolves issues experienced with PowerScribe and Billing.

**Legend:**

Light Green = Previously Released software

Gray = Internal version, non-release version

Bright Green = Current Release

## ERAD RIS RELEASE VERSION NUMBERS

Build	Patch	UI Version	Core Version	WS Version	DB Version	Digital Forms	Patient Portal	UM Portal	Provider Portal	Notes
2016.7	-	2.16.7.0 (3GB)	2.16.7.0	2.16.7.0	2.16.7.0.00490835	2.16.7.0	1.16.7.0.493031	2.16.7.0.493008		Full version release
2016.7	1	2.16.7.1 (3GB)	2.16.7.0	2.16.7.1	2.16.7.0.00490835	2.16.7.0	1.16.7.0.493031	2.16.7.0.493008		GUI and Web Service updates
2016.7	2	2.16.7.2 (3GB)	2.16.7.0	2.16.7.2	2.16.7.0.00490835	2.16.7.0	1.16.7.0.493031	2.16.7.0.493008		GUI and Web Service updates
2016.7	3	2.16.7.3 (3GB)	2.16.7.0	2.16.7.3	2.16.7.0.00490835	2.16.7.0	1.16.7.0.493031	2.16.7.0.493008		GUI and Web Service updates
2016.7	4	2.16.7.4 (3GB)	2.16.7.0	2.16.7.3	2.16.7.0.00490835	2.16.7.0	1.16.7.0.493031	2.16.7.0.493008		GUI
2016.7	5	2.16.7.5 (3GB)	2.16.7.0	2.16.7.3	2.16.7.0.00490835	2.16.7.0	1.16.7.0.493031	2.16.7.0.493008		GUI
2016.7	6	2.16.7.6 (3GB)	2.16.7.0	2.16.7.6	2.16.7.0.00490835	2.16.7.0	1.16.7.0.493031	2.16.7.0.493008		GUI and Web Service updates
2016.7	7	2.16.7.7 (3GB)	2.16.7.0	2.16.7.7	2.16.7.0.00490835	2.16.7.0	1.16.7.0.493031	2.16.7.0.493008		GUI and Web Service updates
2016.7	8	2.16.7.8 (3GB)	2.16.7.0	2.16.7.7	2.16.7.8.00683507	2.16.7.0	1.16.7.0.493031	2.16.7.0.493008		GUI and DB updates
2016.7	9	2.16.7.9 (3GB)	2.16.7.0	2.16.7.9	2.16.7.9.00715012	2.16.7.0	1.16.7.0.493031	2.16.7.9.723457		GUI, Web Services, DB updates and UM Portal
2016.7	10	2.16.7.10 (3GB)	2.16.7.0	2.16.7.10	2.16.7.9.00715012	2.16.7.0	1.16.7.0.493031	2.16.7.9.723457		GUI and Web Service updates
2016.7	11	2.16.7.11 (3GB)	2.16.7.0	2.16.7.11	2.16.7.11.00761267	2.16.7.0	1.16.7.0.493031	2.16.7.9.723457		GUI, Web Service and DB updates
2016.7	12	2.16.7.12 (3GB)	2.16.7.0	2.16.7.11	2.16.7.11.00761267	2.16.7.0	1.16.7.0.493031	2.16.7.9.723457		GUI
2016.7	13	2.16.7.13 (3GB)	2.16.7.0	2.16.7.13	2.16.7.13.00823274	2.16.7.0	2.16.7.13.805715	2.16.7.13.805717		GUI, Web Service, DB, Patient and UM Portal updates
2016.7	14	2.16.7.14 (3GB)	2.16.7.0	2.16.7.14	2.16.7.14.00888220	2.16.7.0	2.16.7.14.897644	2.16.7.14.897646		GUI, Web Service, DB, Patient and UM Portal updates
2017.1	-	2.17.1.0 (3GB)	2.17.1.0	2.17.1.0	2.17.1.0.00559886	2.17.1.0	2.17.1.0.572290	2.17.1.0.000000		Full Version Release
2017.1	1	2.17.1.1 (3GB)	2.17.1.0	2.17.1.1	2.17.1.1.00589952	2.17.1.0	2.17.1.0.572290	2.17.1.0.000000		GUI, Web Service and DB updates
2017.1	2	2.17.1.2 (3GB)	2.17.1.0	2.17.1.2	2.17.1.2.00621962	2.17.1.0	2.17.1.0.572290	2.17.1.0.000000		GUI, Web Service and DB updates
2017.1	3	2.17.1.3 (3GB)	2.17.1.0	2.17.1.3	2.17.1.3.00640480	2.17.1.0	2.17.1.0.572290	2.17.1.0.000000		GUI, Web Service and DB updates
2017.1	4	2.17.1.4 (3GB)	2.17.1.0	2.17.1.4	2.17.1.4.00692239	2.17.1.0	2.17.1.4.701924	2.17.1.0.000000		GUI, Web Service, DB and Patient Portal updates
2017.1	5	2.17.1.4 (3GB)	2.17.1.0	2.17.1.5	2.17.1.4.00692239	2.17.1.0	2.17.1.4.701924	2.17.1.0.000000		Web Service
2017.1	6	2.17.1.6 (3GB)	2.17.1.0	2.17.1.5	2.17.1.6.00745281	2.17.1.0	2.17.1.4.701924	2.17.1.0.000000		GUI and DB Updates
2017.1	7	2.17.1.7 (3GB)	2.17.1.0	2.17.1.5	2.17.1.6.00745281	2.17.1.0	2.17.1.4.701924	2.17.1.0.000000		GUI update
2017.1	8	2.17.1.8 (3GB)	2.17.1.0	2.17.1.5	2.17.1.6.00745281	2.17.1.0	2.17.1.4.701924	2.17.1.0.000000		GUI update
2017.1	9	2.17.1.9 (3GB)	2.17.1.0	2.17.1.5	2.17.1.6.00745281	2.17.1.0	2.17.1.4.701924	2.17.1.0.000000		GUI update
2017.1	10	2.17.1.10 (3GB)	2.17.1.0	2.17.1.10	2.17.1.6.00745281	2.17.1.0	2.17.1.4.701924	2.17.1.0.000000		GUI and Web Service update
2017.2	-	2.17.2.0 (3GB)	2.17.2.0	2.17.2.0	2.17.2.0.00695782	2.17.2.0	2.17.2.0.702238	2.17.2.0.702213	2.17.2.0.702226	Full Version Release. First release of Provider Portal
2017.3	-	2.17.3.0 (3GB)	2.17.3.0	2.17.3.0	2.17.3.0.00764112	2.17.3.0	2.17.3.0.321	2.17.3.0.321	2.17.3.0.321	Full Version Release. Including Patient, Provider and UM Portals
2017.3	1	2.17.3.1 (3GB)	2.17.3.0	2.17.3.1	2.17.3.1.00846328	2.17.3.1	2.17.3.1.853299	2.17.3.1.853301	2.17.3.1.856171	GUI, Web Service, DB. Including Patient, Provider and UM Portals
2017.3	2	2.17.3.2 (3GB)	2.17.3.0	2.17.3.2	2.17.3.2.00898348	2.17.3.2	2.17.3.2.913898	2.17.3.2.913899	2.17.3.1.856171	GUI, Web Service, DB. Including Patient, Provider and UM Portals
2017.3	2.1	2.17.3.2.1 (3GB)	2.17.3.0	2.17.3.2	2.17.3.2.00898348	2.17.3.2	2.17.3.2.913898	2.17.3.2.913899	2.17.3.1.856171	GUI Only
2017.3	3	2.17.3.3 (3GB)	2.17.3.0	2.17.3.3	2.17.3.3.00954008	2.17.3.2	2.17.3.3.962869	2.17.3.3.962870	2.17.3.3.962870	GUI, Web Service, DB. Including Patient, Provider and UM Portals
2017.3	4	2.17.3.4 (3GB)	2.17.3.0	2.17.3.4	2.17.3.4.00987562	2.17.3.2	2.17.3.3.962869	2.17.3.3.962870	2.17.3.3.962870	GUI, Web Service and DB
2017.3	5	2.17.3.5 (3GB)	2.17.3.0	2.17.3.5	2.17.3.5.01023250	2.17.3.2	2.17.3.5.1023087	2.17.3.5.1025862	2.17.3.5.1023087	GUI, Web Service, DB, Patient Portal, Referring Portal, UM Portal
2017.3	6	2.17.3.6 (3GB)	2.17.3.0	2.17.3.6	2.17.3.6.01065114	2.17.3.2	2.17.3.5.1023087	2.17.3.5.1025862	2.17.3.5.1023087	GUI, Web Service, DB,
2017.3	7	2.17.3.7 (3GB)	2.17.3.0	2.17.3.6	2.17.3.6.01065114	2.17.3.2	2.17.3.5.1023087	2.17.3.5.1025862	2.17.3.5.1023087	GUI
2017.3	8	2.17.3.8 (3GB)	2.17.3.0	2.17.3.8	2.17.3.6.01065114	2.17.3.2	2.17.3.5.1023087	2.17.3.5.1025862	2.17.3.5.1023087	GUI and Web Service
2017.3	9	2.17.3.8 (3GB)	2.17.3.0	2.17.3.9	2.17.3.6.01065114	2.17.3.2	2.17.3.5.1023087	2.17.3.5.1025862	2.17.3.5.1023087	Web Service
2017.6	-	3.17.6.0 (3GB)	3.17.6.0	3.17.6.0	3.17.6.0.01037550	3.17.6.0	3.17.6.0.1037868	3.17.6.0.1037869	3.17.6.0.1037869	Full Version Release. Including Patient, Provider and UM Portals
2017.6	1	3.17.6.1 (3GB)	3.17.6.0	3.17.6.1	3.17.6.1.01094077	3.17.6.0	3.17.6.0.1037868	3.17.6.0.1037869	3.17.6.0.1037869	GUI, Web Service and DB updates

## INSTALLING

### WEB SERVICE

This updated is only required for the Wedge Web Services. The Core RIS Service and Document Distribution Service are not required to be updated.

1. The web service upgrade consists of replacing the files in the RIS Web Service directory with the files supplied in the rRISService folder with this build. Always create a backup of the files being replaced. This upgrade includes 134 files in the rRISService folder and 12 sub folders. Of those folders, 1 is a folder titled “**XSL**” that contains a sub folder and files within the subfolder. Another folder is titled “**deploy**” that contains the new .config files that will be deployed with the use of the file called “ServicesConfigWizard.exe” (see instructions below). Folders ar (Arabic), en\_AU (Australian English), en-ZA (South Africa), he (Hebrew), pt\_BR (Brazilian Portuguese), es-AR (Argentina Spanish) and ru-RU (Russian) and are localization folders. The WedgePlugins folder contains various plugin files for RADAR, MIRTH, Ensemble, etc...

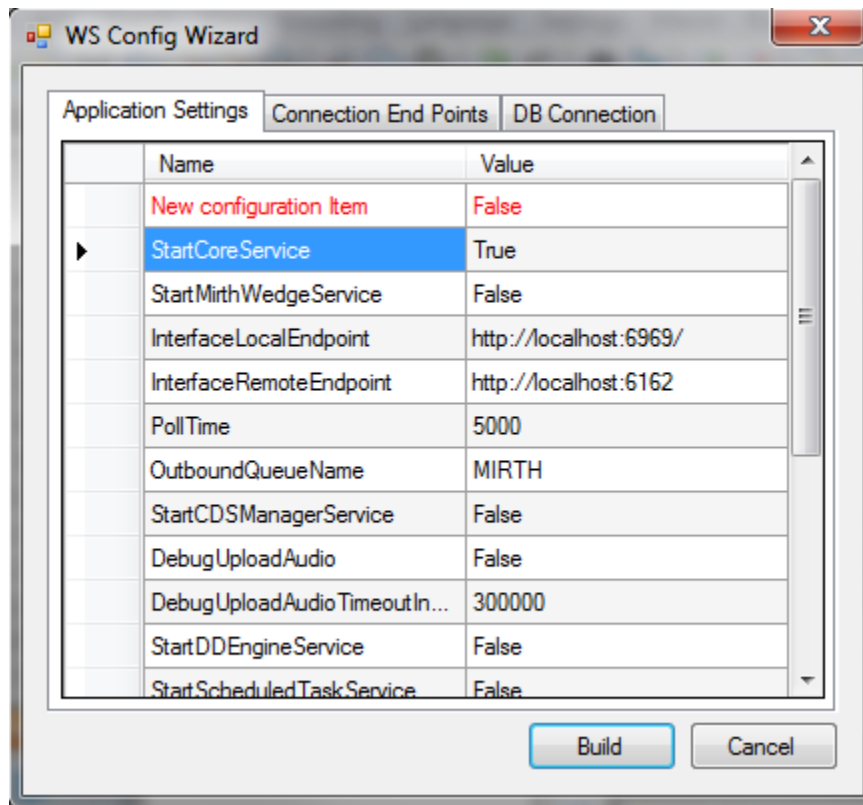
#### Services Configuration Wizard

With the release of 42 to decrease the chance of losing configuration setting and missing new configuration options, we will no longer include the configuration files in the release in the main set of files, but they will now exist in a “deploy” folder, which will contain the three site configurable config files; applicationsettings, connectionstrings, and services as well as a copy of the rRISServices.exe configuration file. The contents of this folder should not be required to be touched.

On the install of a new service, all files will be copied to the appropriate locations on the server (no configurations will be over written). If instructed or to confirm no new configurations have been added the user can run the new application “ServicesConfigWizard.exe”

This application will read the existing configuration file(s) (if files exist), and compare to the provided new configuration files then will display three tabs, for each configuration file:

**Application Settings:** all existing configuration value will be displayed, if there are any new configuration entries they will be displayed in red.





**Connection End Points:** will display the existing configuration, if the value is left blank then that entry will not be created, in the case of “Study Service” or “CDS Service” if both http and net.tcp were not provided then that endpoint will not be created at all.

WS Config Wizard

Application Settings | **Connection End Points** | DB Connection

**Study Service**

http:// localhost:8040 /rRIS/

net.tcp:// localhost:8041 /rRIS/

**Notify Service**

net.tcp:// localhost:7095 /rRIS/

**CDS Service**

http:// localhost:7092 /rRIS/

net.tcp:// localhost:7093 /rRIS/

Build Cancel