



eRAD RIS

RELEASE ANNOUNCEMENT

Build 4.2024.079

UPDATED JULY 23, 2024

TABLE OF CONTENTS

Summary 2

 Release Announcement..... 2

 New Features..... 2

Feature Details 3

 Management Report..... 3

 Feature #32250 – Add ability to suppress certain portions of the SSRS Report
in the Portals..... 3

Version Details 6

 Code Stream..... 6

PUBLICATION HISTORY

Revision	Author	Description
July 23, 2024	Kevin Brooks, Michelle Mahabir / Hilary Saltmarsh	<ul style="list-style-type: none"> ▪ Commercial release.

SUMMARY

Release Announcement

This release of ERAD RIS 4.2024.079 introduces the ability to suppress certain elements of the SSRS reports in the Portals.

New Features

This release introduces the following features and enhancements:

Category	Redmine #	Subject	Description
Management Reports	32250	Add ability to suppress certain portions of the SSRS Report in the Portals	This enhancement to Management Reports provides the ability to suppress certain elements of the SSRS report when viewed via the Portals, specifically the Radiologist's contact information in diagnostic reports.

SORTED BY CATEGORY AND REDMINE

Refer to the FEATURE DETAILS section below for configuration and usage information.

FEATURE DETAILS

Management Report

Feature #32250 – Add ability to suppress certain portions of the SSRS Report in the Portals

Summary

This enhancement to Management Reports provides the ability to suppress certain elements of the SSRS report when viewed via the Portals, specifically the Radiologist's contact information in diagnostic reports.

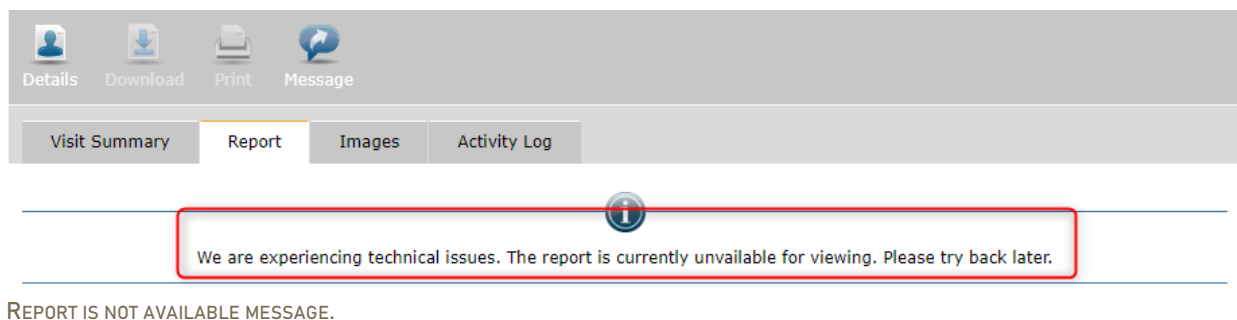
Background

Previously, the SSRS template for the diagnostic reports contained a section that displayed the Radiologist's contact number, specifically intended for the Referring Physician's use. However, this information was inadvertently displayed on reports within the Patient Portal, which was not intended.

Feature Description

With these changes, specific sections of a SSRS report can now be suppressed, ensuring that only designated information is displayed within the appropriate portals.

If system parameter does not exist in the report template, the user will see a "report is not available" message, and the exception details will be logged as `The remote server returned an error: (500) Internal Server Error`.



Service Team Upgrade Instructions

The Service Team must complete the following actions to deploy this feature:

Portals

Changes to applicationsettings.config

- Enable this feature by configuring `ExtraReportURLParams` for desired Portal(s), for example:

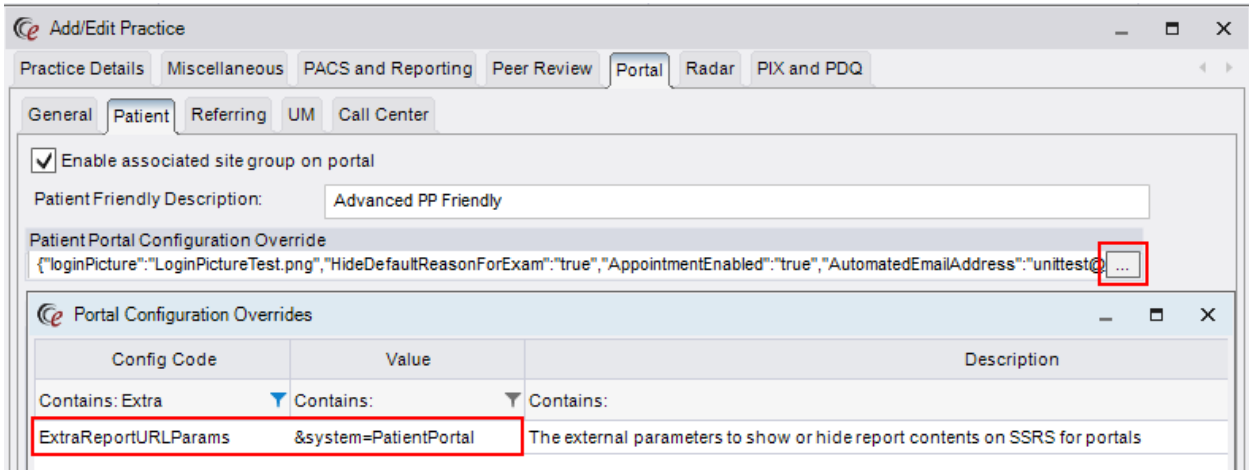

```
<add key="ExtraReportURLParams" value="&amp;system=PatientPortal"/>
```

 - If the config value is not NULL, then value will be added as a parameter to the diagnostic report URL for all three portals, therefore diagnostic template can use this parameter to filter the report content based on the system type.

Configuration Instructions

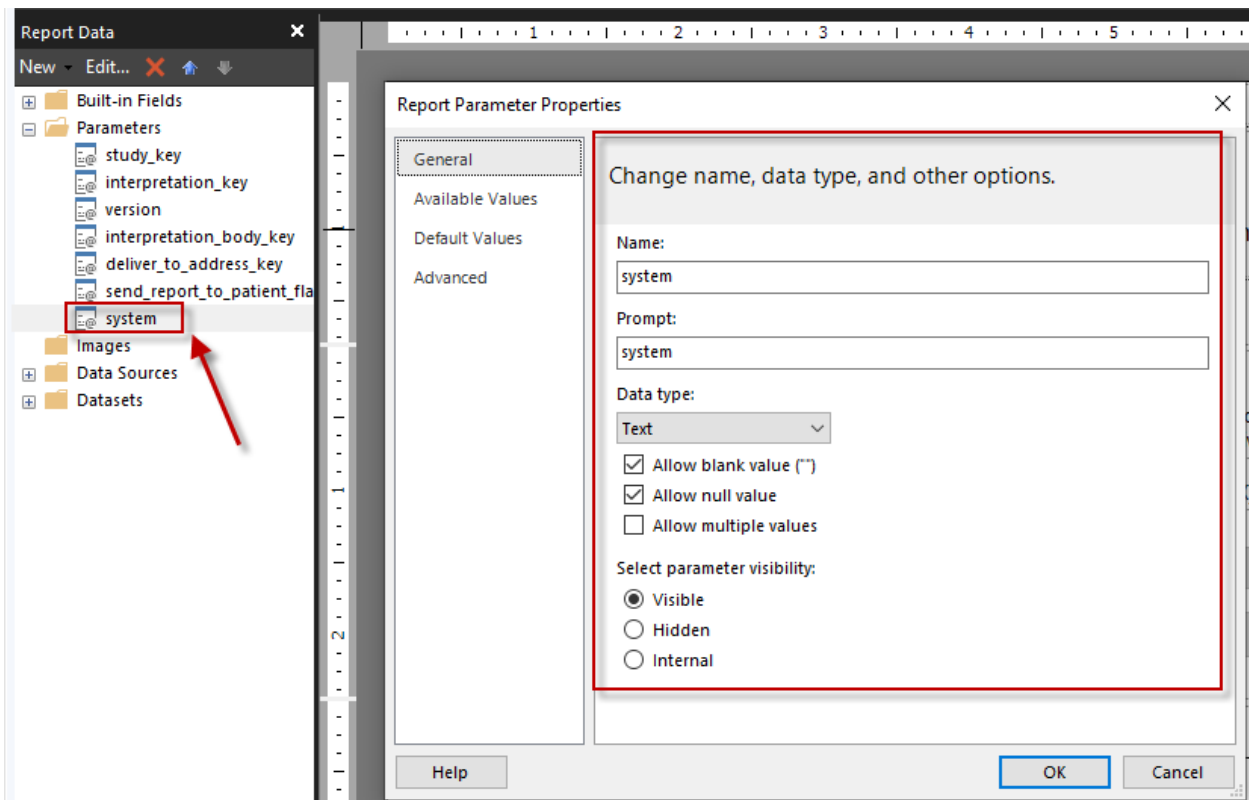
No System Administrator actions are necessary to enable this feature; however, optional configuration is available:

- The applicationsettings.config setting `ExtraReportURLParams` has a practice level override.

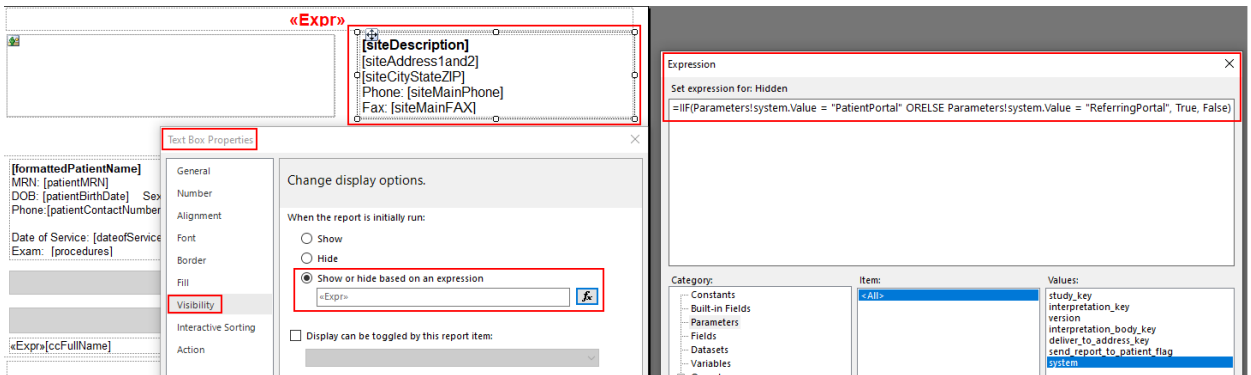
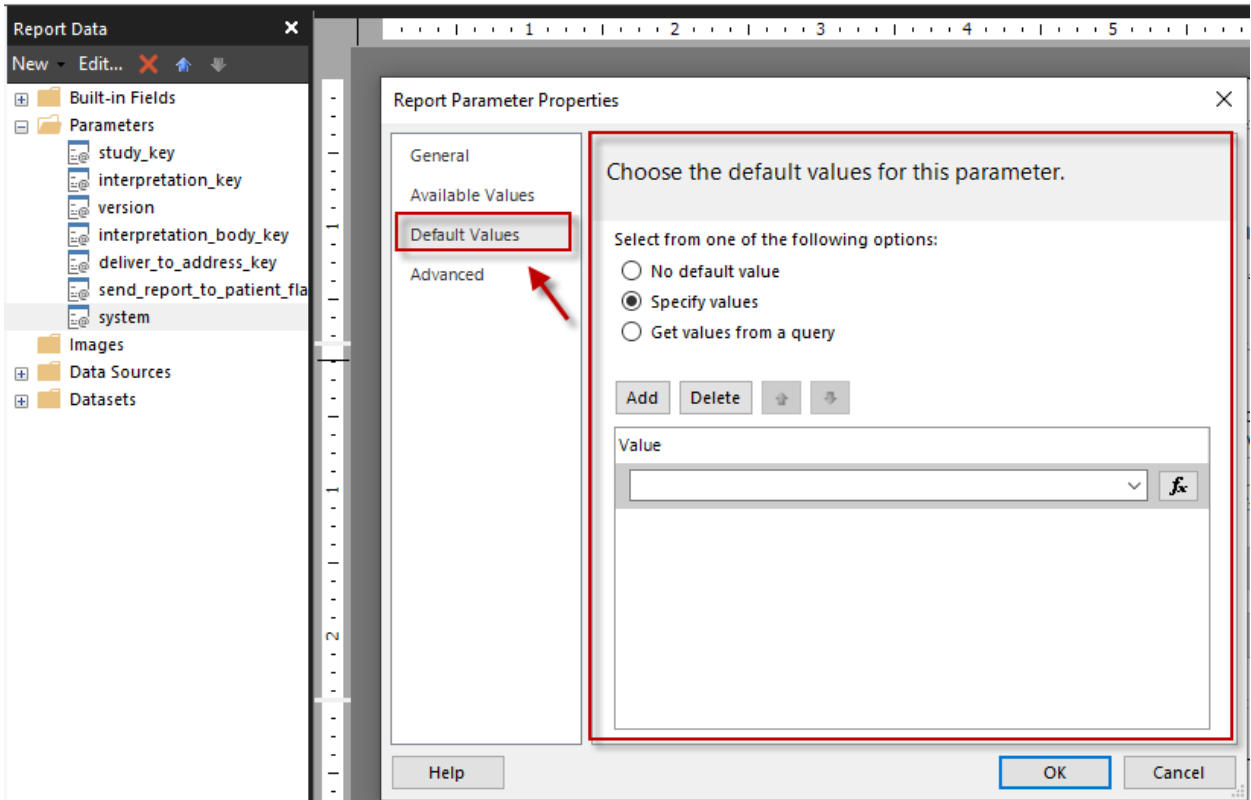


Report Template

A new parameter in the report template has been created that allows for BLANK and NULL values.



THE REPORT TEMPLATE NOW ALLOWS BLANK VALUES, NULL VALUES, AND USING AN EMPTY STRING AS A DEFAULT VALUE.



Depending on how reports are organized, hiding an element in SSRS will remove it from the document and could shift positioning of other nearby elements.

VERSION DETAILS

Code Stream

The following source code branches have been merged into this release:

