

Server Update

For eRAD RIS

Version 3.0







Build 3.2017.6

Update 3.2017.6.6

Table of Contents

Package Contents	3
Intended Audience	3
Who is affected.....	3
New settings	4
System configuration	4
New Features.....	5
Feature # 20929 - Disable live status updates for email report delivery jobs if system is not configured to receive status updates from RADAR	5
Resolved Items	6
Code Stream	7
eRAD RIS Release Version Numbers	8
Installing	9
Client/GUI.....	9
Web Service	9
Database Updates	11

PACKAGE CONTENTS

 _ReleaseNotes	05/11/18 2:20 PM
 DB	05/10/18 4:44 PM
 rRISService	05/10/18 4:44 PM
 ThickClient	05/10/18 4:44 PM
 Build_2017.6.6.7z	05/11/18 2:26 PM
 RISServerMasterCert.pfx	03/31/16 1:38 PM

INTENDED AUDIENCE

The intended audience for this document is the RadNet Clinical Systems team and the eRAD Support/Service team.

It is appropriate to share the document with any customers applying the patch, in order to review new feature descriptions and resolved defects.

WHO IS AFFECTED

Build 2017.6 installs. This server update must be applied to 2017.6.5

NEW SETTINGS

SYSTEM CONFIGURATION

Setting	Default	Purpose
EnableRADAREmailReportDeliveryJobStatusUpdates	True	(value = Y/N) Enables live RADAR email report delivery job status updates.

NEW FEATURES

FEATURE # 20929 - DISABLE LIVE STATUS UPDATES FOR EMAIL REPORT DELIVERY JOBS IF SYSTEM IS NOT CONFIGURED TO RECEIVE STATUS UPDATES FROM RADAR

In version 3.2017.6, a new feature was added that would allow for a more realistic distribution status for reports being delivered via email. Instead of immediately setting the status to Complete after delivering the message to RADAR, the status would be set to In Progress until RADAR notified RIS that the email had been delivered.

If a system is not configured to receive the live updates from RADAR, it will result in the report delivery getting stuck in an In Progress status. To rectify this, there is now a System Configuration setting to turn on the new feature. By default, emailed reports will go to Completed status as soon as they are delivered to RADAR. If the configuration setting is set to True, then the new feature will be enabled and the status will be In Progress until RADAR informs the RIS that the email was delivered to the recipient.

Configuration setting:

EnableRADAREmailReportDeliveryJobStatusUpdates Default = False

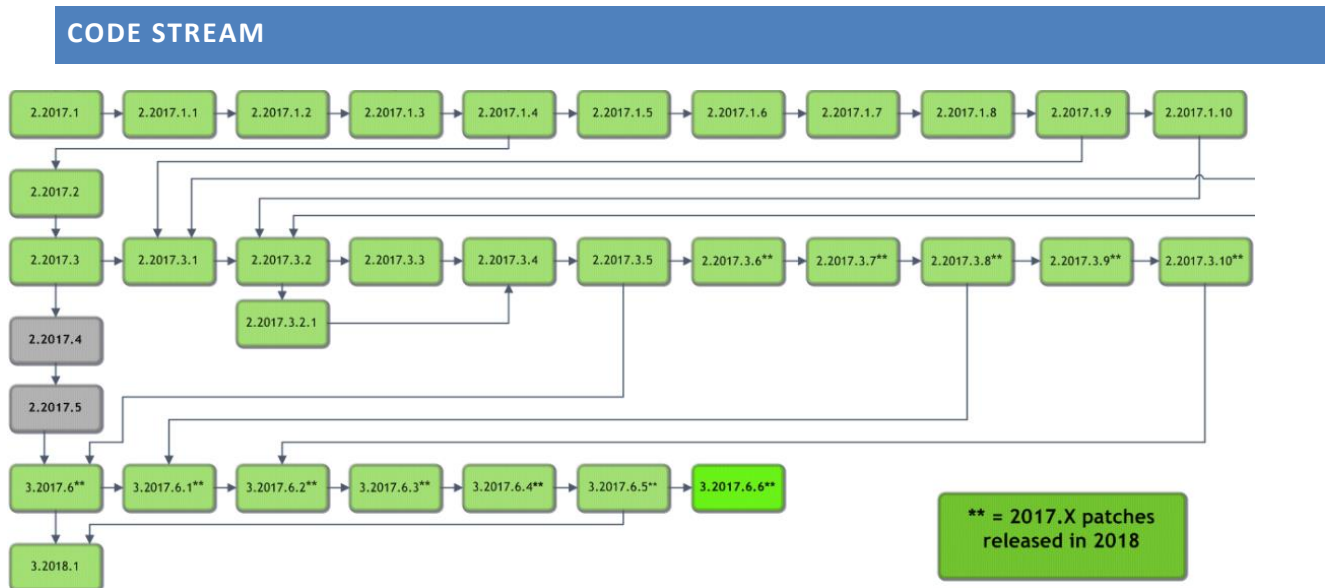
In addition, the following must be true to enable the interactive status update:

- EnableRADARInboundMessageProcessing = True
- InboundRADARMessageFilter must contain "REPORT DELIVERY"

RESOLVED ITEMS

Most items resolved in this hotfix were originally part of later builds and have been pulled into this patch for early release.

Redmine # for 2017.6.4	Redmine # for 2018.1	Subject
20891	20826	In 2017.6.4 and .5, if a contrast billing code was not already attached to a procedure code, adding contrast to the Contrast table was adding the contrast billing code as Inactive instead of Active. This has been corrected.
20890	20849	When loading priors via eRAD PACS integration, the configured number of most relevant priors is now selected first and <i>then</i> the most relevant studies are sorted in reverse chronological order and requested from PACS. In 2017.6, the date sort was happening prior to selecting the most relevant priors, which was resulting in less relevant but more recent studies being selected.
20619		If a patient has a previous alternate MRN, the Issuer description is now displayed in the MRN grid even when the Issuer is no longer Active.
20559		Resolved an object reference error that occurred when switching Practices/Sites on the Inbound Document worklist.

**Legend:**

Light Green = Previously Released software

Gray = Internal version, non-release version

Bright Green = Current Release

ERAD RIS RELEASE VERSION NUMBERS

Build	Patch	UI Version	Core Version	WS Version	DB Version	Digital Forms	Patient Portal	UM Portal	Provider Portal	Notes
2017.1	-	2.17.1.0 (3GB)	2.17.1.0	2.17.1.0	2.17.1.0.00559886	2.17.1.0	2.17.1.0.572290	2.17.1.0.00000		Full Version Release
2017.1	1	2.17.1.1 (3GB)	2.17.1.0	2.17.1.1	2.17.1.1.00589952	2.17.1.0	2.17.1.0.572290	2.17.1.0.00000		GUI, Web Service and DB updates
2017.1	2	2.17.1.2 (3GB)	2.17.1.0	2.17.1.2	2.17.1.2.00621962	2.17.1.0	2.17.1.0.572290	2.17.1.0.00000		GUI, Web Service and DB updates
2017.1	3	2.17.1.3 (3GB)	2.17.1.0	2.17.1.3	2.17.1.3.00640480	2.17.1.0	2.17.1.0.572290	2.17.1.0.00000		GUI, Web Service and DB updates
2017.1	4	2.17.1.4 (3GB)	2.17.1.0	2.17.1.4	2.17.1.4.00692239	2.17.1.0	2.17.1.4.701924	2.17.1.0.00000		GUI, Web Service, DB and Patient Portal updates
2017.1	5	2.17.1.4 (3GB)	2.17.1.0	2.17.1.5	2.17.1.4.00692239	2.17.1.0	2.17.1.4.701924	2.17.1.0.00000		Web Service
2017.1	6	2.17.1.6 (3GB)	2.17.1.0	2.17.1.5	2.17.1.6.00745281	2.17.1.0	2.17.1.4.701924	2.17.1.0.00000		GUI and DB Updates
2017.1	7	2.17.1.7 (3GB)	2.17.1.0	2.17.1.5	2.17.1.6.00745281	2.17.1.0	2.17.1.4.701924	2.17.1.0.00000		GUI update
2017.1	8	2.17.1.8 (3GB)	2.17.1.0	2.17.1.5	2.17.1.6.00745281	2.17.1.0	2.17.1.4.701924	2.17.1.0.00000		GUI update
2017.1	9	2.17.1.9 (3GB)	2.17.1.0	2.17.1.5	2.17.1.6.00745281	2.17.1.0	2.17.1.4.701924	2.17.1.0.00000		GUI update
2017.1	10	2.17.1.10 (3GB)	2.17.1.0	2.17.1.10	2.17.1.6.00745281	2.17.1.0	2.17.1.4.701924	2.17.1.0.00000		GUI and Web Service update
2017.2	-	2.17.2.0 (3GB)	2.17.2.0	2.17.2.0	2.17.2.0.00695782	2.17.2.0	2.17.2.0.702238	2.17.2.0.702213	2.17.2.0.702226	Full Version Release. First release of Provider Portal
2017.3	-	2.17.3.0 (3GB)	2.17.3.0	2.17.3.0	2.17.3.0.00764112	2.17.3.0	2.17.3.0.321	2.17.3.0.321	2.17.3.0.321	Full Version Release. Including Patient, Provider and UM Portals
2017.3	1	2.17.3.1 (3GB)	2.17.3.0	2.17.3.1	2.17.3.1.00846328	2.17.3.1	2.17.3.1.853399	2.17.3.1.853301	2.17.3.1.856171	GUI, Web Service, DB. Including Patient, Provider and UM Portals
2017.3	2	2.17.3.2 (3GB)	2.17.3.0	2.17.3.2	2.17.3.2.00898348	2.17.3.2	2.17.3.2.913898	2.17.3.2.913899	2.17.3.1.856171	GUI, Web Service, DB. Including Patient, Provider and UM Portals
2017.3	2.1	2.17.3.2.1 (3GB)	2.17.3.0	2.17.3.2	2.17.3.2.00898348	2.17.3.2	2.17.3.2.913898	2.17.3.2.913899	2.17.3.1.856171	GUI Only
2017.3	3	2.17.3.3 (3GB)	2.17.3.0	2.17.3.3	2.17.3.3.00954008	2.17.3.2	2.17.3.3.962869	2.17.3.3.962870	2.17.3.3.962870	GUI, Web Service, DB. Including Patient, Provider and UM Portals
2017.3	4	2.17.3.4 (3GB)	2.17.3.0	2.17.3.4	2.17.3.4.00987562	2.17.3.2	2.17.3.3.962869	2.17.3.3.962870	2.17.3.3.962870	GUI, Web Service and DB
2017.3	5	2.17.3.5 (3GB)	2.17.3.0	2.17.3.5	2.17.3.5.01023250	2.17.3.2	2.17.3.5.1023087	2.17.3.5.1025862	2.17.3.5.1023087	GUI, Web Service, DB, Patient Portal, Referring Portal, UM Portal
2017.3	6	2.17.3.6 (3GB)	2.17.3.0	2.17.3.6	2.17.3.6.01065114	2.17.3.2	2.17.3.5.1023087	2.17.3.5.1025862	2.17.3.5.1023087	GUI, Web Service, DB,
2017.3	7	2.17.3.7 (3GB)	2.17.3.0	2.17.3.6	2.17.3.6.01065114	2.17.3.2	2.17.3.5.1023087	2.17.3.5.1025862	2.17.3.5.1023087	GUI
2017.3	8	2.17.3.8 (3GB)	2.17.3.0	2.17.3.8	2.17.3.6.01065114	2.17.3.2	2.17.3.5.1023087	2.17.3.5.1025862	2.17.3.5.1023087	GUI and Web Service
2017.3	9	2.17.3.8 (3GB)	2.17.3.0	2.17.3.9	2.17.3.6.01065114	2.17.3.2	2.17.3.5.1023087	2.17.3.5.1025862	2.17.3.5.1023087	Web Service
2017.3	10	2.17.3.10 (3GB)	2.17.3.0	2.17.3.10	2.17.3.10.01125764	2.17.3.2	2.17.3.5.1023087	2.17.3.5.1025862	2.17.3.5.1023087	GUI, Web Service and DB updates
2017.6	-	3.17.6.0 (3GB)	3.17.6.0	3.17.6.0	3.17.6.0.01037550	3.17.6.0	3.17.6.0.1037868	3.17.6.0.1037869	3.17.6.0.1037869	Full Version Release. Including Patient, Provider and UM Portals
2017.6	1	3.17.6.1 (3GB)	3.17.6.0	3.17.6.1	3.17.6.1.01094077	3.17.6.0	3.17.6.0.1037868	3.17.6.0.1037869	3.17.6.0.1037869	GUI, Web Service and DB updates
2017.6	2	3.17.6.2 (3GB)	3.17.6.0	3.17.6.2	3.17.6.2.01130171	3.17.6.2	3.17.6.2.1138297	3.17.6.2.1138298	3.17.6.2.1138298	GUI, Web Service, DB, Patient, Provider and UM Portals and Digital Forms
2017.6	3	3.17.6.3 (3GB)	3.17.6.0	3.17.6.3	3.17.6.3.01166033	3.17.6.3	3.17.6.3.1168622	3.17.6.3.1168622	3.17.6.3.1168623	GUI, Web Service, DB, Patient, Provider and UM Portals and Digital Forms
2017.6	4	3.17.6.4 (3GB)	3.17.6.0	3.17.6.4	3.17.6.4.01187509	3.17.6.4	3.17.6.4.1190295	3.17.6.4.1190295	3.17.6.4.1190295	GUI, Web Service, DB, Patient, Provider and UM Portals and Digital Forms
2017.6	5	3.17.6.5 (3GB)	3.17.6.0	3.17.6.5	3.17.6.4.01187509	3.17.6.4	3.17.6.5.1199064	3.17.6.5.1199063	3.17.6.5.1199064	GUI, Web Service, Patient, Provider and UM Portals
2017.6	6	3.17.6.6 (3GB)	3.17.6.0	3.17.6.6	3.17.6.6.01236363	3.17.6.4	3.17.6.5.1199064	3.17.6.5.1199063	3.17.6.5.1199064	GUI, Web Service and DB updates
2018.1	-	3.18.1.0 (3GB)	3.18.1.0	3.18.1.0	3.17.6.4.01187509	3.18.1.0	3.18.1.0.1229289	3.18.1.0.1229290	3.18.1.0.1229290	Full version release

INSTALLING

CLIENT/GUI

Copy and replace the current rRIS...zip file with the eRAD_rRIS_2017.6.6.zip file provided with this release.

Be sure to make a backup of the ris.exe.config file contained within the current .zip folder.

WEB SERVICE

This updated is only required for the Wedge Web Services. The Core RIS Service and Document Distribution Service are not required to be updated.

1. The web service upgrade consists of replacing the files in the RIS Web Service directory with the files supplied in the rRISService folder with this build. Always create a backup of the files being replaced. This upgrade includes 141 files in the rRISService folder and 7 sub folders. Of those folders, 1 is a folder titled **"XSL"** that contains a sub folder and files within the subfolder. Another folder is titled **"deploy"** that contains the new .config files that will be deployed with the user of the file called "ServicesConfigWizard.exe" (see instructions below). Folders are (Arabic), en_AU (Australian English), en-ZA (South Africa), he (Hebrew), pt_BR (Brazilian Portuguese), es-AR (Argentina Spanish) and ru-RU (Russian) and are localization folders. The WedgePlugins folder contains various plugin files for RADAR, MIRTH, Ensemble, etc...

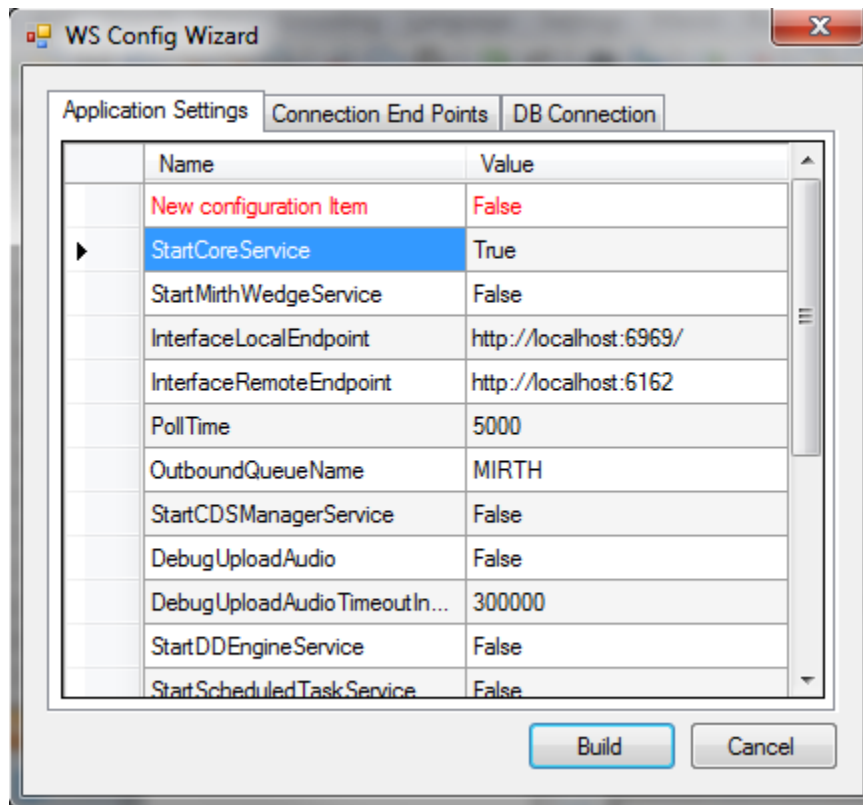
Services Configuration Wizard

With the release of 42 to decrease the chance of losing configuration setting and missing new configuration options, we will no longer include the configuration files in the release in the main set of files, but they will now exist in a "deploy" folder, which will contain the three site configurable config files; applicationsettings, connectionstrings, and services as well as a copy of the rRISServices.exe configuration file. The contents of this folder should not be required to be touched.

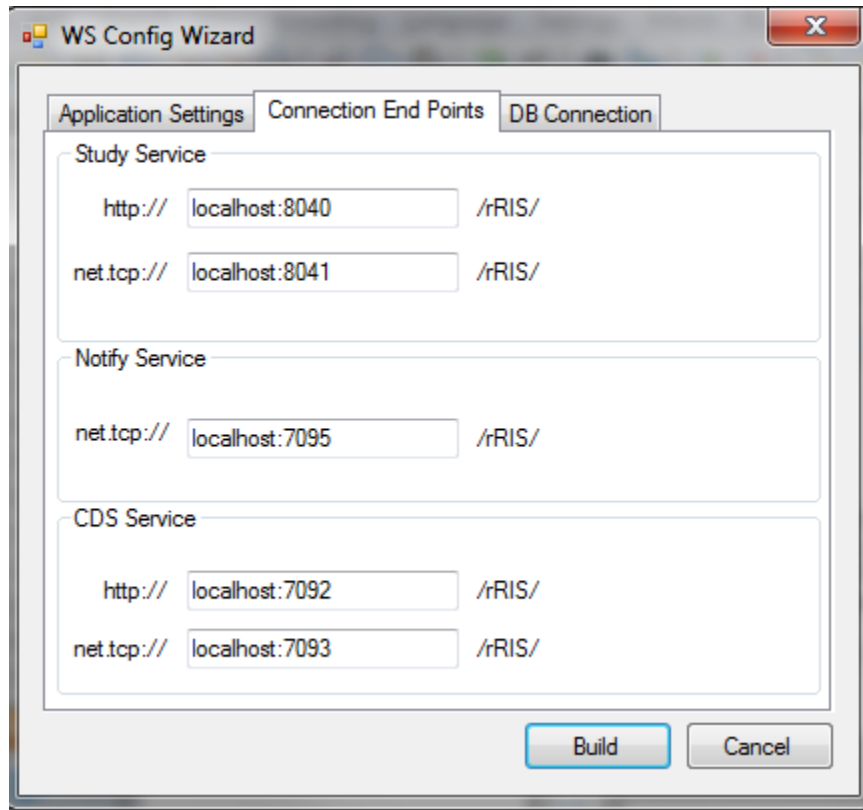
On the install of a new service, all files will be copied to the appropriate locations on the server (no configurations will be over written). If instructed or to confirm no new configurations have been added the user can run the new application "ServicesConfigWizard.exe"

This application will read the existing configuration file(s) (if files exist), and compare to the provided new configuration files then will display three tabs, for each configuration file:

Application Settings: all existing configuration value will be displayed, if there are any new configuration entries they will be displayed in red.



Connection End Points: will display the existing configuration, if the value is left blank then that entry will not be created, in the case of “Study Service” or “CDS Service” if both http and net.tcp were not provided then that endpoint will not be created at all.



DATABASE UPDATES

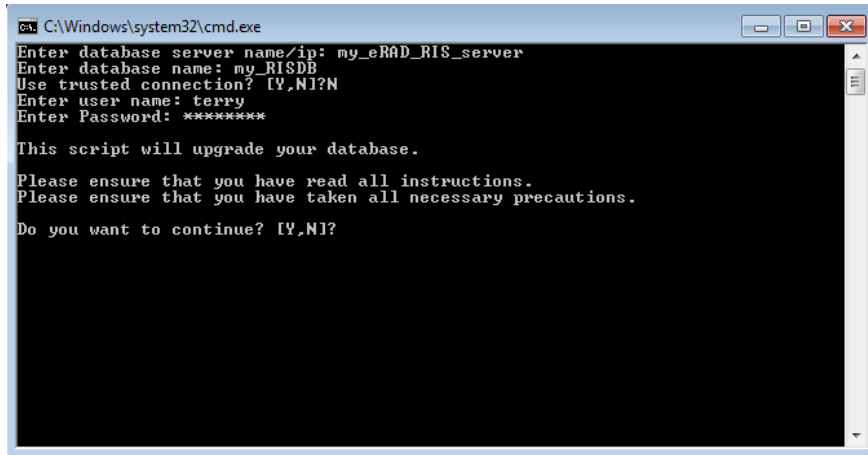
Always run the upgrade scripts in a test environment of the actual database to make sure they run cleanly. If any errors occur please contact development.

Note: There is a new upgrade process introduced with B43.1 called "RunUpgrade.bat". The batch file will open a command window. This process will prompt you for the database server name, database name and authentication credentials. There is no need to run the database upgrade scripts manually as was done in previous releases.

- 1) From the upgrade folder, double click the “RunUpgrade.bat” command file.
- 2) Enter the server name, database name and authentication credentials to the database. You have 2 choices for authentication credentials.

- 3) You can choose to use “Trusted connection”. Using this option will pass the identity of the currently logged on user. If this user has “db_owner” access to the eRAD RIS database then feel free to use this options.
- 4) If you decide not to use “Trusted connection” then you will be prompted for user id and password.

Example:



```
C:\Windows\system32\cmd.exe
Enter database server name/ip: my_eRAD_RIS_server
Enter database name: my_RISDB
Use trusted connection? [Y,N]?N
Enter user name: terry
Enter Password: *****

This script will upgrade your database.
Please ensure that you have read all instructions.
Please ensure that you have taken all necessary precautions.
Do you want to continue? [Y,N]?
```

- 5) After the upgrade program has finished you can find the upgrade logs in the “log” folder. The file name will be eRAD_RIS_db_upgrade_timestamp.log, where timestamp is a value representing the date and time the upgrade started. If you see any errors please contact the development team