



eRAD RIS

RELEASE ANNOUNCEMENT

Build 4.2024.009

UPDATED JANUARY 22, 2024

TABLE OF CONTENTS

Summary 2

 Release Announcement2

 New Features2

 Resolved Issues2

Feature Details 3

 Insurance Eligibility.....3

 Feature #33797 – Add Additional Search Parameters to Reprocess Eligibility
 Feature3

 Feature #33985 – Enhancements to RIS-Based Reprocess Eligibility Analytics
 Tool4

Version Details 7

 Code Stream7

PUBLICATION HISTORY

Revision	Author	Description
January 22, 2024	Kevin Brooks, Michelle Mahabir / Hilary Saltmarsh	<ul style="list-style-type: none"> Commercial release.

SUMMARY

Release Announcement

This release of ERAD RIS 4.2024.009 introduces an enhancement to the Reprocess Eligibility functionality and resolves an insurance related timeout issue.

New Features

This release introduces the following features and enhancements:

Category	Redmine #	Subject	Description
Insurance Eligibility	33797	Add Additional Search Parameters to Reprocess Eligibility Feature	This enhancement to Insurance Eligibility provides additional search criteria to the Reprocess Eligibility functionality.
Insurance Eligibility	33985	RIS Based Analytics Tool – Improvements to Process Eligibility	This enhancement to Insurance Eligibility improves tools to perform Insurance "What IF Testing" used for review and refinement of eligibility special conditions, multi-carrier, limit payment and PAPA payment rules.

SORTED BY CATEGORY AND REDMINE

Refer to the FEATURE DETAILS section below for configuration and usage information.

Resolved Issues

This release resolves the following issues:

Category	Redmine #	Subject
Insurance Eligibility	33821	Resolved Insurance Eligibility issue where frequent timeouts were being observed when reprocessing eligibility.

SORTED BY CATEGORY AND REDMINE

FEATURE DETAILS

Insurance Eligibility

Feature #33797 – Add Additional Search Parameters to Reprocess Eligibility Feature

Summary

This enhancement to Insurance Eligibility provides additional search criteria to the Reprocess Eligibility functionality.

Feature Description

Within the `Eligibility Special Conditions` table, the `Reprocess Eligibility` functionality has been enhanced with additional search parameters such as `Status`, `Modality` and `Procedure`. Each dropdown features type-ahead functionality and allows the input of multiple values, enhancing the search process for greater efficiency.

The screenshot shows the 'Reprocess Eligibility' application window. The 'New Reprocessing Job' form includes the following elements:

- Payers:** A dropdown menu.
- Carriers:** A dropdown menu.
- Status:** A dropdown menu, highlighted with a red box.
- Modality:** A dropdown menu, highlighted with a red box.
- Procedure:** A dropdown menu, highlighted with a red box.
- Limit to IVT Worklist:** A checked checkbox.
- or Date Range:** Two date pickers in MM-dd-yyyy format.
- Reverify Insurance with Payer:** An unchecked checkbox.
- Submit:** A button.

Below the form is a table with the following data:

Jo	Remaining	Status	Job Details	User	Job Started	Job Finished
▶ 17	0 of 26	finished	IVT Worklist Items	admin...	05-04-2023 03:1...	05-04-2023 0...
17	0 of 1	finished	IVT Worklist Items	admin...	08-26-2022 01:1...	08-26-2022 0...
17	0 of 1	finished	IVT Worklist Items	admin...	08-26-2022 01:1...	08-26-2022 0...
17	0 of 1	finished	06-27-2022 to 06-30-2022 AND Reverify Insurance with Payer AND...	admin...	06-29-2022 11:5...	06-29-2022 1...
17	0 of 2	finished	06-27-2022 to 06-30-2022 AND Reverify Insurance with Payer AND...	admin...	06-29-2022 11:4...	06-29-2022 1...
17	0 of 2	finished	06-27-2022 to 06-30-2022 AND Reverify Insurance with Payer AND...	admin...	06-29-2022 11:4...	06-29-2022 1...
17	0 of 2	finished	06-27-2022 to 06-30-2022 AND Reverify Insurance with Payer AND...	admin...	06-29-2022 11:4...	06-29-2022 1...
17	0 of 2	finished	06-27-2022 to 06-30-2022 AND (0140884)	admin...	06-29-2022 11:2...	06-29-2022 1...

At the bottom of the window, there are two buttons: 'Max Reprocessing Threads' and 'Close'.

Configuration Instructions

No System Administrator actions are necessary to enable this feature.

Feature #33985 – Enhancements to RIS-Based Reprocess Eligibility Analytics Tool

Summary

This enhancement to Insurance Eligibility improves tools to perform Insurance "What IF testing", used for review and refinement of eligibility special condition, multi carrier, limit payment, and PAPA payment rules.

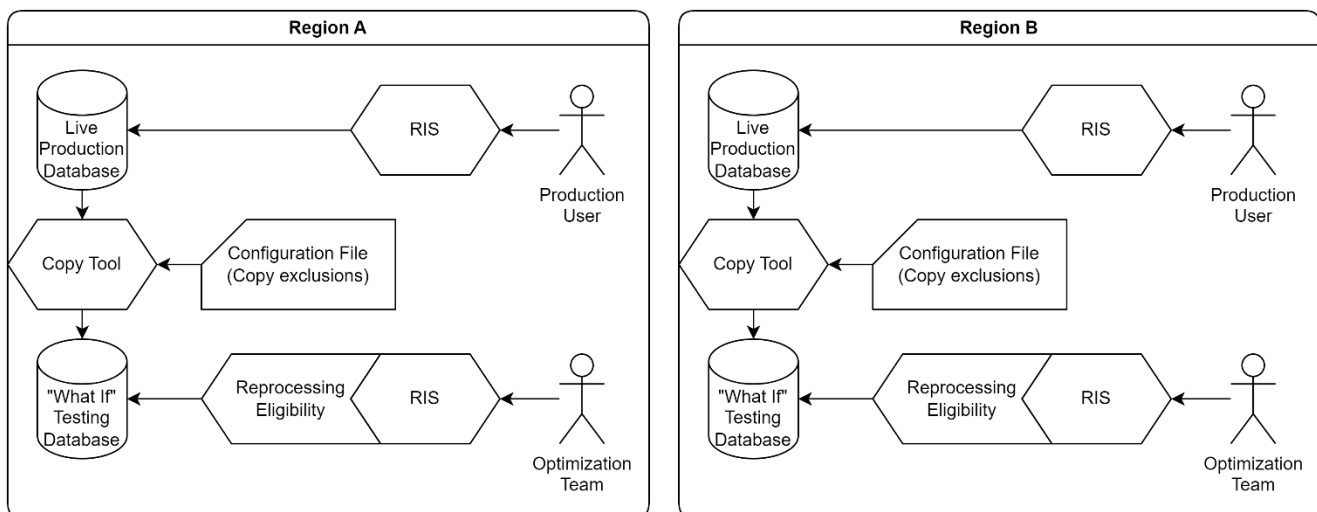
Background

Previously, FEATURE #27205 - RE-EVALUATION OF INSURANCE ELIGIBILITY AFTER LOGIC UPDATES introduced a `Reprocess Eligibility` screen to re-evaluate the insurance eligibility of outstanding items when adjustments were made to the Eligibility Special Condition logic.

This process was performed using ESP tools to reprocess eligibility without contacting the payer, allowing for ESP reporting based on pre/post snapshots.

Feature Description

With this change, a new `ExportCopyOver` "Copy Tool" has been created that will run weekly to provide approximately 12 months of data for analysis. The key benefit to this new solution is that it removes the need for Mirth, instead using RIS for creating snapshots of the pre and post conditions.



EACH REGION CAN UTILIZE A DEDICATED DATABASE FOR "WHAT IF" TESTING.

Additional Changes

- A new summary tab in the reprocess eligibility job grid shows the financial values before and after the reprocess eligibility job.
- The summary tab will also show how the results compare to the EOB if the optional table `z_eob_summary` exists in the DB.
- Also, when the `z_eob_summary` table exists and there are RIS patient financial values that don't match the EOB but given all the financial values in the eligibility response a match to the EOB would have been possible, a second `Opportunities` tab will display showing a list of all the visits and their financial values that could have matched the EOB.
- The modality filter selection for reprocessing eligibility now contains a special `VisitsForBothHiAndLowEndModalities` option to help test reprocessing for patients who came in for both Xrays and CTs as part of the same visit:

- After a reprocessing eligibility job is submitted users can edit the description field for the job:

- After the job finishes a summary of the results is captured in the `c_reprocess_eligibility_financial_summary` table, which can be used for reports in the ESP and other tools.
 - The summary will include EOB details when the optional non-core RIS table `z_eob_summary` exists in the database. If this optional "z_ table" does not exist, the reprocess eligibly job summary will display without EOB information.

Eligibility Analysis Process

Perform the ExportCopyOver

1. In a folder of your choice, place the following two files:
 - 1.1. `ExportCopyOver.exe`
 - 1.2. `IgnoreTablesList.txt`



The folder path should not contain spaces.

2. Configure `IgnoreTablesList.txt` as required to specify which tables to exclude from the copy over.
 - Note that `c_audit` will always be excluded as it will never be needed in the "What if" databases.
3. From the server on which the destination database resides, run the copy tool from the command line, e.g.:

```
ExportCopyOver.exe QASERVER19 eRAD_RIS_BWRetro c:\@Staging\csv 2 4
c:\SQLServer\Data WHATIF_TESTING "\\10.100.16.50\data\RISBuilds\@GOLD
Released software\eRAD RIS\Versions 4.2023.X" LAUNCH_WS_UI
```

Parameters for the above command:

- QASERVER19 - the source database server DNS name or IP
- eRAD_RIS_BWRetro - The source database name
- c:\@Staging\csv - Staging for temporary data files and UI/WS for What IF testing. You will need to create this folder.
- 2 - Number of weeks back to start export (based on `c_study.performed` date)
- 4 - Number of weeks previous to the above setting to go back - in this example, 2 4 is a date range of 2 weeks ago - 6 weeks ago = 4 weeks of data.
- c:\SQLServer\Data WHATIF_TESTING - Folder where the SQL Data files should be created on the local server
- "\\10.100.16.50\data\RISBuilds\@GOLD Released software\eRAD RIS\Versions 4.2023.X" - Location where the RIS releases are stored

- LAUNCH_WS_UI (optional parameter) - When specified, will launch the WS and UI at the end of the script. If left out, will start the WS as a service.
 - The first time it launches the WS as a service you will need to be present to grant administrator permissions. After that, this script can be executed unattended. It is expected that this script will run at night without this parameter but for testing it is often easiest to use this parameter.
 - When running with the `LAUNCH_WS_UI` option, you need to run as `Administrator`. If you aren't using the `LAUNCH_WS_UI` and allowing `ExportCopyOver` to manage the WS you don't need to run as `Administrator`.

Troubleshooting errors running from the command line:

- Go to SSMS refresh your databases.
- Delete any `WhatIF` databases created on the failed attempt.
- Delete the `CopyOverMaintenanceDB` database.
- Delete the contents of `C:\CopyOverApp\csv\`.

A typical reason for failing is forgetting to launch the cmd line as Administrator, or not waiting long enough for the Build Zip file to download.

Baseline Eligibility Run

The first step is to generate the data that will serve as the baseline for comparison:

1. Login to RIS and use the `Reprocessing Eligibility` feature to pick the parameters of their "What If" test case such as Date Range and Payers
2. Run `Reprocess Eligibility` to generate both before and after numbers, and a Job ID used by the ESP tool to access the "What If" report, similar to the one currently used.
3. This first job run will tell them the difference between all of the current settings in the RIS and settings from 1-12 months ago.

Configure Test Scenario

After capturing baseline data, users use RIS to make a configuration change to one of the lookup tables that impact pricing.

- `l_eligibility_special_condition` - impacts warnings and values we get from individual insurance returns
- `l_limit_payments` - impacts the patient financial responsibility after all insurance returns are received
- `l_multi_carrier_rules` - impacts how we patient financial responsibility after all insurance returns are received
- `l_payment_rules` - (formally PAPA rules), which impacts the Amount to collect calculation based of the final patient financial responsibility
- Also taken into consideration are various columns in `l_carrier` and `l_billing_code` tables.

Comparison Eligibility Run

The final step is to generate updated values using the updated configuration.

1. Run `Reprocess Eligibility` a second time, to generate the true difference their change made.
2. Finally, review these changes in the ESP tools.

Configuration Instructions

No System Administrator actions are necessary to enable this feature, however Service Team assistance is required for some actions.

VERSION DETAILS

Code Stream

The following source code branches have been merged into this release:

