

# **Server Update**

For eRAD RIS

Version 2.0

Build 2.2017.3

Update 2.2017.3.4

## **Table of Contents**

Package Contents .....	3
Intended Audience .....	3
Who is affected.....	3
Resolved Items .....	4
Code Stream .....	5
eRAD RIS Release Version Numbers .....	6
Installing .....	7
Client/GUI.....	7
Web Service .....	7
Database Updates .....	9

## PACKAGE CONTENTS

 _ReleaseNotes	11/21/2017 11:35 AM
 DB	11/21/2017 9:43 AM
 rRISService	11/21/2017 9:42 AM
 Service Tools	11/21/2017 9:44 AM
 ThickClient	11/21/2017 11:32 AM

## INTENDED AUDIENCE

The intended audience for this document is the RadNet Clinical Systems team and the eRAD Support/Service team.

It is appropriate to share the document with any customers applying the patch, in order to review new feature descriptions and resolved defects.

## WHO IS AFFECTED

Build 2017.3 installs. This server update must be applied to 2017.3.3

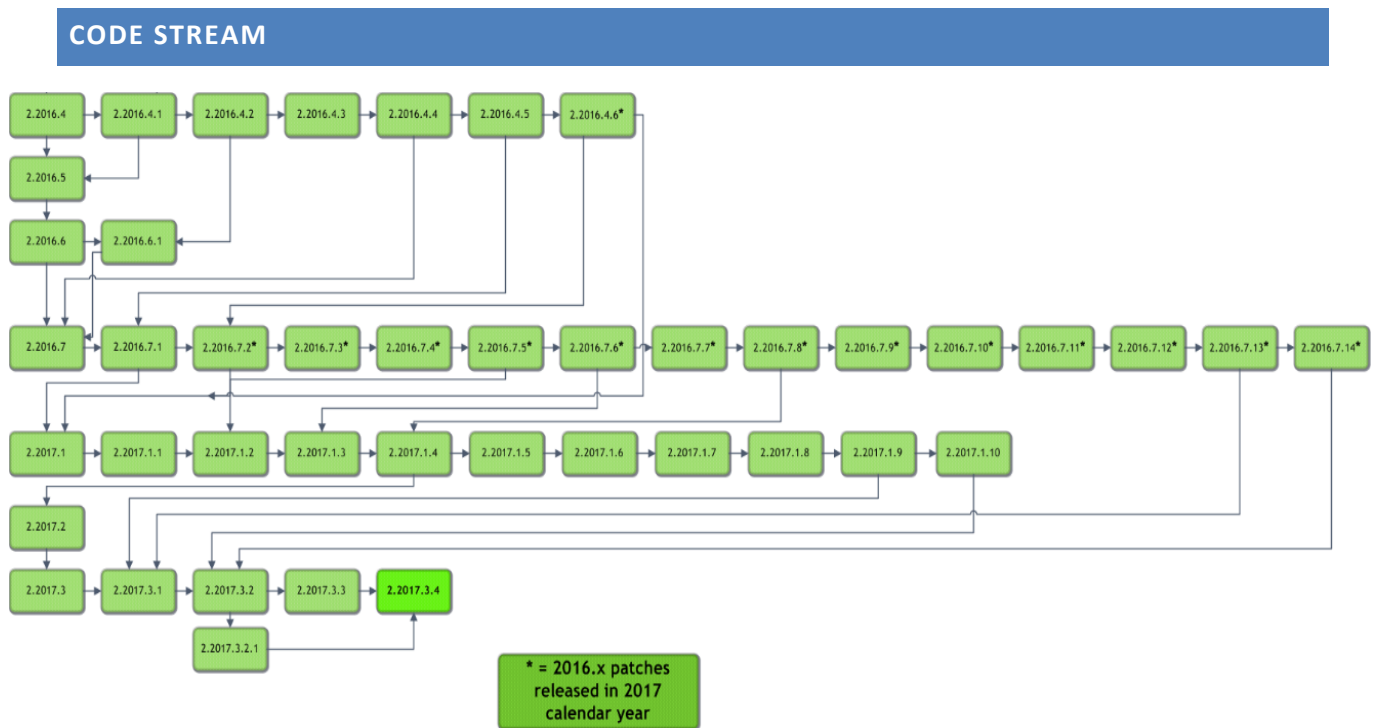
## RESOLVED ITEMS

## eRAD RIS

Redmine #	Subject
18938	RIS is unable to find time slots for multi-day procedures plans
18964	Some multi-day procedure plans cause an exception when opened
18958	Intermittent error message "The commit transaction has no corresponding begin transaction"

The following list of items have been taken from current new development (originally intended to be released in a future version).

Redmine #	Subject	Original Resolved Version
18987	Import CD intermittently causes error "No codec registered for transfer syntax: JPEG Lossless..."	3.2017.6

**Legend:**

Light Green = Previously Released software

Bright Green = Current Release

## ERAD RIS RELEASE VERSION NUMBERS

Build	Patch	UI Version	Core Version	WS Version	DB Version	Digital Forms	Patient Portal	UM Portal	Provider Portal	Notes
2016.4	-	2.16.4.0	2.16.4.0	2.16.4.0	2.16.4.0.00301943	2.16.4.0	1.16.4.0.310284			Full Version Release
2016.4	1	2.16.4.1	2.16.4.0	2.16.4.1	2.16.4.0.00301943	2.16.4.0	1.16.4.0.310284			GUI and Web Service updates
2016.4	2	2.16.4.2 (3GB)	2.16.4.0	2.16.4.1	2.16.4.0.00301943	2.16.4.0	1.16.4.2.460241			GUI and Patient Portal updates
2016.4	3	2.16.4.3 (3GB)	2.16.4.0	2.16.4.3	2.16.4.3.00483474	2.16.4.0	1.16.4.3.489120			GUI and Patient Portal updates
2016.4	4	2.16.4.4 (3GB)	2.16.4.0	2.16.4.3	2.16.4.3.00483474	2.16.4.0	1.16.4.3.489120			GUI
2016.4	5	2.16.4.5 (3GB)	2.16.4.0	2.16.4.3	2.16.4.3.00483474	2.16.4.0				GUI
2016.4	6	2.16.4.6 (3GB)	2.16.4.0	2.16.4.3	2.16.4.3.00483474	2.16.4.0				GUI
2016.5	-	2.16.5.0 (3GB)	2.16.5.0	2.16.5.0	2.16.5.0.00349303	2.16.5.0	1.16.5.0.362009			Full Version Release
2016.6	-	2.16.6.0 (3GB)	2.16.6.0	2.16.6.0	2.16.6.0.00411295	2.16.6.0	1.16.6.0.432471			Full Version Release
2016.6	1	2.16.6.1 (3GB)	2.16.6.0	2.16.6.0	2.16.6.0.00411295	2.16.6.0	1.16.6.1.468583			GUI and Patient Portal updated
2016.7	-	2.16.7.0 (3GB)	2.16.7.0	2.16.7.0	2.16.7.0.00490835	2.16.7.0	1.16.7.0.493031	2.16.7.0.493008		Full version release
2016.7	1	2.16.7.1 (3GB)	2.16.7.0	2.16.7.1	2.16.7.0.00490835	2.16.7.0	1.16.7.0.493031	2.16.7.0.493008		GUI and Web Service updates
2016.7	2	2.16.7.2 (3GB)	2.16.7.0	2.16.7.2	2.16.7.0.00490835	2.16.7.0	1.16.7.0.493031	2.16.7.0.493008		GUI and Web Service updates
2016.7	3	2.16.7.3 (3GB)	2.16.7.0	2.16.7.3	2.16.7.0.00490835	2.16.7.0	1.16.7.0.493031	2.16.7.0.493008		GUI and Web Service updates
2016.7	4	2.16.7.4 (3GB)	2.16.7.0	2.16.7.3	2.16.7.0.00490835	2.16.7.0	1.16.7.0.493031	2.16.7.0.493008		GUI
2016.7	5	2.16.7.5 (3GB)	2.16.7.0	2.16.7.3	2.16.7.0.00490835	2.16.7.0	1.16.7.0.493031	2.16.7.0.493008		GUI
2016.7	6	2.16.7.6 (3GB)	2.16.7.0	2.16.7.6	2.16.7.0.00490835	2.16.7.0	1.16.7.0.493031	2.16.7.0.493008		GUI and Web Service updates
2016.7	7	2.16.7.7 (3GB)	2.16.7.0	2.16.7.7	2.16.7.0.00490835	2.16.7.0	1.16.7.0.493031	2.16.7.0.493008		GUI and Web Service updates
2016.7	8	2.16.7.8 (3GB)	2.16.7.0	2.16.7.7	2.16.7.8.00683507	2.16.7.0	1.16.7.0.493031	2.16.7.0.493008		GUI and DB updates
2016.7	9	2.16.7.9 (3GB)	2.16.7.0	2.16.7.9	2.16.7.9.00715012	2.16.7.0	1.16.7.0.493031	2.16.7.9.723457		GUI, Web Services, DB updates and UM Portal
2016.7	10	2.16.7.10 (3GB)	2.16.7.0	2.16.7.10	2.16.7.9.00715012	2.16.7.0	1.16.7.0.493031	2.16.7.9.723457		GUI and Web Service updates
2016.7	11	2.16.7.11 (3GB)	2.16.7.0	2.16.7.11	2.16.7.11.00761267	2.16.7.0	1.16.7.0.493031	2.16.7.9.723457		GUI, Web Service and DB updates
2016.7	12	2.16.7.12 (3GB)	2.16.7.0	2.16.7.11	2.16.7.11.00761267	2.16.7.0	1.16.7.0.493031	2.16.7.9.723457		GUI
2016.7	13	2.16.7.13 (3GB)	2.16.7.0	2.16.7.13	2.16.7.13.00823274	2.16.7.0	2.16.7.13.805715	2.16.7.13.805717		GUI, Web Service, DB, Patient and UM Portal updates
2016.7	14	2.16.7.14 (3GB)	2.16.7.0	2.16.7.14	2.16.7.14.00888220	2.16.7.0	2.16.7.14.897644	2.16.7.14.897646		GUI, Web Service, DB, Patient and UM Portal updates
2017.1	-	2.17.1.0 (3GB)	2.17.1.0	2.17.1.0	2.17.1.0.00559886	2.17.1.0	2.17.1.0.572290	2.17.1.0.000000		Full Version Release
2017.1	1	2.17.1.1 (3GB)	2.17.1.0	2.17.1.1	2.17.1.1.00559886	2.17.1.0	2.17.1.0.572290	2.17.1.0.000000		GUI, Web Service and DB updates
2017.1	2	2.17.1.2 (3GB)	2.17.1.0	2.17.1.2	2.17.1.2.00621962	2.17.1.0	2.17.1.0.572290	2.17.1.0.000000		GUI, Web Service and DB updates
2017.1	3	2.17.1.3 (3GB)	2.17.1.0	2.17.1.3	2.17.1.3.00640480	2.17.1.0	2.17.1.0.572290	2.17.1.0.000000		GUI, Web Service and DB updates
2017.1	4	2.17.1.4 (3GB)	2.17.1.0	2.17.1.4	2.17.1.4.00692239	2.17.1.0	2.17.1.4.701924	2.17.1.0.000000		GUI, Web Service, DB and Patient Portal updates
2017.1	5	2.17.1.4 (3GB)	2.17.1.0	2.17.1.5	2.17.1.4.00692239	2.17.1.0	2.17.1.4.701924	2.17.1.0.000000		Web Service
2017.1	6	2.17.1.6 (3GB)	2.17.1.0	2.17.1.5	2.17.1.6.00745281	2.17.1.0	2.17.1.4.701924	2.17.1.0.000000		GUI and DB Updates
2017.1	7	2.17.1.7 (3GB)	2.17.1.0	2.17.1.5	2.17.1.6.00745281	2.17.1.0	2.17.1.4.701924	2.17.1.0.000000		GUI update
2017.1	8	2.17.1.8 (3GB)	2.17.1.0	2.17.1.5	2.17.1.6.00745281	2.17.1.0	2.17.1.4.701924	2.17.1.0.000000		GUI update
2017.1	9	2.17.1.9 (3GB)	2.17.1.0	2.17.1.5	2.17.1.6.00745281	2.17.1.0	2.17.1.4.701924	2.17.1.0.000000		GUI update
2017.1	10	2.17.1.10 (3GB)	2.17.1.0	2.17.1.10	2.17.1.6.00745281	2.17.1.0	2.17.1.4.701924	2.17.1.0.000000		GUI and Web Service update
2017.2	-	2.17.2.0 (3GB)	2.17.2.0	2.17.2.0	2.17.2.0.00695782	2.17.2.0	2.17.2.0.702238	2.17.2.0.702213	2.17.2.0.702226	Full Version Release. First release of Provider Portal
2017.3	-	2.17.3.0 (3GB)	2.17.3.0	2.17.3.0	2.17.3.0.00764112	2.17.3.0	2.17.3.0.321	2.17.3.0.321		Full Version Release. Including Patient, Provider and UM Portals
2017.3	1	2.17.3.1 (3GB)	2.17.3.0	2.17.3.1	2.17.3.1.00846328	2.17.3.1	2.17.3.1.853399	2.17.3.1.853301	2.17.3.1.856171	GUI, Web Service, DB. Including Patient, Provider and UM Portals
2017.3	2	2.17.3.2 (3GB)	2.17.3.0	2.17.3.2	2.17.3.2.00898348	2.17.3.2	2.17.3.2.913898	2.17.3.2.913899	2.17.3.1.856171	GUI, Web Service, DB. Including Patient, Provider and UM Portals
2017.3	2.1	2.17.3.2.1 (3GB)	2.17.3.0	2.17.3.2	2.17.3.2.00898348	2.17.3.2	2.17.3.2.913898	2.17.3.2.913899	2.17.3.1.856171	GUI Only
2017.3	3	2.17.3.3 (3GB)	2.17.3.0	2.17.3.3	2.17.3.3.00954008	2.17.3.2	2.17.3.3.962869	2.17.3.3.962870	2.17.3.3.962870	GUI, Web Service, DB. Including Patient, Provider and UM Portals
2017.3	4	2.17.3.4 (3GB)	2.17.3.0	2.17.3.4	2.17.3.4.00987562	2.17.3.2	2.17.3.3.962869	2.17.3.3.962870	2.17.3.3.962870	GUI, Web Service and DB

## INSTALLING

### CLIENT/GUI

Copy and replace the current rRIS...zip file with the eRAD\_rRIS\_2017.3.4.zip file provided with this release.

Be sure to make a backup of the ris.exe.config file contained within the current .zip folder.

### WEB SERVICE

This updated is only required for the Wedge Web Services. The Core RIS Service and Document Distribution Service are not required to be updated.

1. The web service upgrade consists of replacing the files in the RIS Web Service directory with the files supplied in the rRISService folder with this build. Always create a backup of the files being replaced. This upgrade includes 134 files in the rRISService folder and 7 sub folders. Of those folders, 1 is a folder titled “**XSL**” that contains a sub folder and files within the subfolder. Another folder is titled “**deploy**” that contains the new .config files that will be deployed with the user of the file called “ServicesConfigWizard.exe” (see instructions below). Folders are (Arabic), en\_AU (Australian English), en-ZA (South Africa), he (Hebrew), pt\_BR (Brazilian Portuguese), es-AR (Argentina Spanish) and ru-RU (Russian) and are localization folders. The WedgePlugins folder contains various plugin files for RADAR, MIRTH, Ensemble, etc...

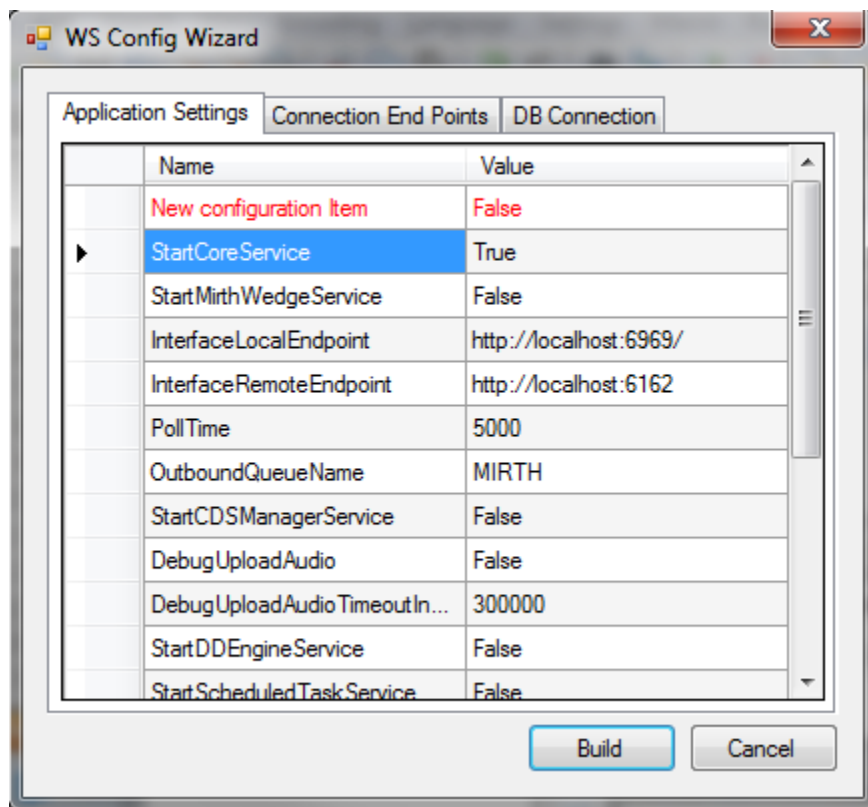
#### Services Configuration Wizard

With the release of 42 to decrease the chance of losing configuration setting and missing new configuration options, we will no longer include the configuration files in the release in the main set of files, but they will now exist in a “deploy” folder, which will contain the three site configurable config files; applicationsettings, connectionstrings, and services as well as a copy of the rRISServices.exe configuration file. The contents of this folder should not be required to be touched.

On the install of a new service, all files will be copied to the appropriate locations on the server (no configurations will be over written). If instructed or to confirm no new configurations have been added the user can run the new application “ServicesConfigWizard.exe”

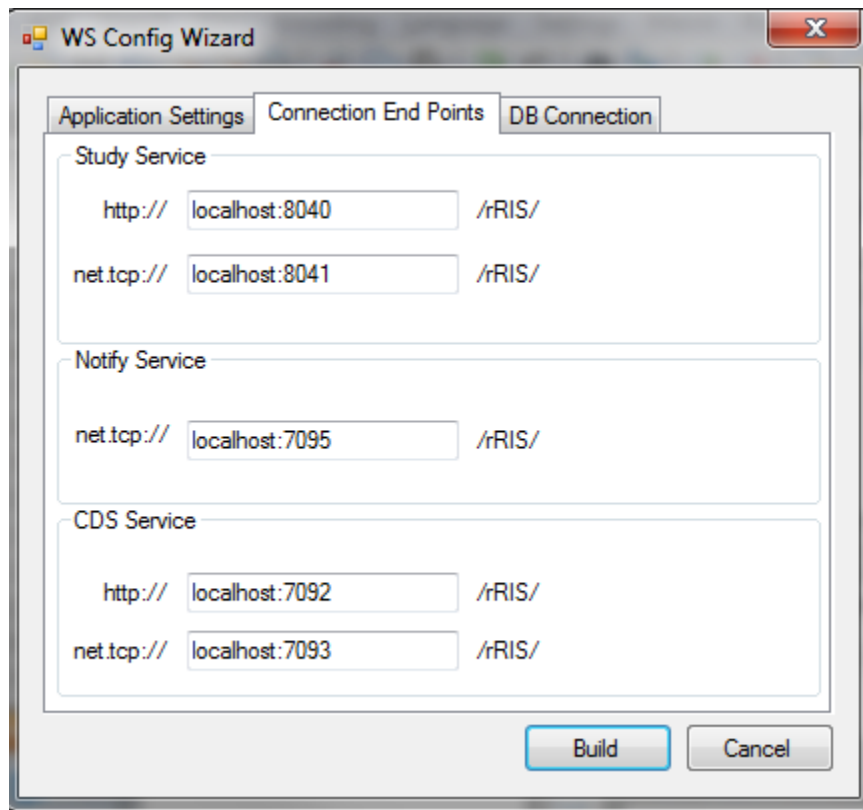
This application will read the existing configuration file(s) (if files exist), and compare to the provided new configuration files then will display three tabs, for each configuration file:

**Application Settings:** all existing configuration value will be displayed, if there are any new configuration entries they will be displayed in red.





**Connection End Points:** will display the existing configuration, if the value is left blank then that entry will not be created, in the case of “Study Service” or “CDS Service” if both http and net.tcp were not provided then that endpoint will not be created at all.



---

## DATABASE UPDATES

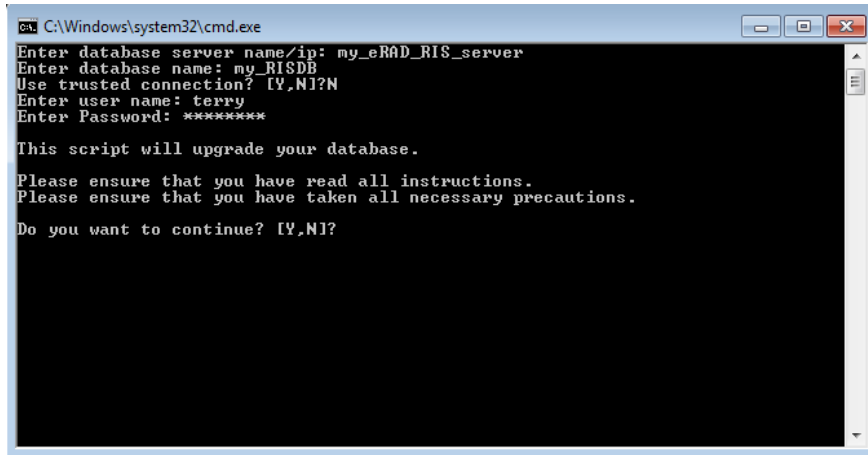
Always run the upgrade scripts in a test environment of the actual database to make sure they run cleanly. If any errors occur please contact development.

*Note: There is a new upgrade process introduced with B43.1 called "RunUpgrade.bat". The batch file will open a command window. This process will prompt you for the database server name, database name and authentication credentials. There is no need to run the database upgrade scripts manually as was done in previous releases.*

- 1) From the upgrade folder, double click the “RunUpgrade.bat” command file.
- 2) Enter the server name, database name and authentication credentials to the database. You have 2 choices for authentication credentials.

- 3) You can choose to use “Trusted connection”. Using this option will pass the identity of the currently logged on user. If this user has “db\_owner” access to the eRAD RIS database then feel free to use this options.
- 4) If you decide not to use “Trusted connection” then you will be prompted for user id and password.

Example:



```
C:\Windows\system32\cmd.exe
Enter database server name/ip: my_eRAD_RIS_server
Enter database name: my_RISDB
Use trusted connection? [Y,N]?N
Enter user name: terry
Enter Password: *****

This script will upgrade your database.
Please ensure that you have read all instructions.
Please ensure that you have taken all necessary precautions.
Do you want to continue? [Y,N]?
```

- 5) After the upgrade program has finished you can find the upgrade logs in the “log” folder. The file name will be eRAD\_RIS\_db\_upgrade\_timestamp.log, where timestamp is a value representing the date and time the upgrade started. If you see any errors please contact the development team